

**DEPARTMENT OF DESIGN AND CONSTRUCTION**  
**KA 'O/HANA HAKULAU A ME KE KA.PILI**  
**CITY AND COUNTY OF HONOLULU**

650 SOUTH KING STREET, 11TH FLOOR • HONOLULU, HAWAII 96813  
PHONE: (808) 768-8480 • FAX: (808) 768-4567 • WEBSITE: [honolulu.gov](http://honolulu.gov)

RICK BLANGIARDI  
MAYOR  
MEIA



HAKU MILLES, P.E.  
DIRECTOR  
POO

MARK YONAMINE, P.E.  
DEPUTY DIRECTOR  
HOPEPO'O

936232

March 13, 2025

Ms. Mary Alice Evans, Director  
Office of Planning and Sustainable Development  
Department of Business, Economic Development and Tourism Environmental Review Program  
235 South Beretania Street, Suite 702  
Honolulu, Hawaii 96813

Dear Ms. Evans:

Subject: Chapter 343, Hawaii Revised Statutes, Record for Determination for the Proposed  
Kūhiō Beach Surfboard Storage Lockers Project  
Tax Map Keys: [1] 2-6-001:015 and 019 Waikīkī, Honolulu, Hawaii

This letter serves as notification to the Hawaii Environmental Review Program that the City and County of Honolulu (CCH), Department of Design and Construction (DOC) has determined that additional environmental review is not necessary for the Proposed Action, which involves the implementation of a surfboard storage rack facility at Kūhiō Beach in Waikīkī. The CCH's DOC respectfully requests the publication of this determination in the upcoming issue of *The Environmental Notice* as required by Section 11-200.1-11 of the Hawaii Administrative Rules (HAR).

In accordance with Chapter 343, Hawaii Revised Statutes (HRS), and HAR 11-200.1, a Prior Determination finding (outlined below) has been prepared for the Proposed Action.

Project Background

On August 25, 1998, the CCH's DOC issued a Final Environmental Assessment (EA) for the Kūhiō Beach Park Expansion and Kalakaua Avenue Promenade project, which was published in the September 23, 1998 issue of *The Environmental Notice* issued by the Environmental Review Program.

The Final EA outlined the expansion of Kūhiō Beach Park by enhancing public facilities, including the construction of a new police substation, comfort station, food concession, bike racks, beach showers, and a surfboard concession. As part of the proposed plan, the surfboard concession was expanded to 600 square feet (sf) to accommodate 600 boards, contributing to the overall redevelopment of the plaza area.

The Final EA concluded with a Finding of No Significant Impact (FONSI), indicating that the project would not have a significant adverse effect on the environment.

Since then, several efforts have been undertaken by the CCH to address the increasing demand for surfboard storage. In 2021, a fire destroyed the surfboard lockers, prompting further consideration for improvements and replacements.

#### Project Setting:

The Project Site is located at Kūhiō Beach Park in Waikīkī, Honolulu, on the island of O'ahu. The Project Site is situated along Kalakaua Avenue, in the alleyway between the Westin Moana Surfrider Hotel and the Honolulu Police Substation (See Figure 1). It encompasses two adjoining Tax Map Key (TMK) parcels [1] 2-6-001:015 and 019.

The area surrounding the Project Site is an urban resort environment, characterized by a mix of building types, varied uses, densities, and treatment of open spaces. Waikīkī is designated as a Special District by the CCH, which is divided into several precincts. The Project Site is located within the Public Precinct (See Figure 2), a zone intended for public activities including parks, open spaces, beach access areas, and other public amenities. Additionally, the Project Site is situated within the Special Management Area (SMA) designated by the CCH (See Figure 3).

The Project Site is located near the beach, offering convenient surfboard storage and a pedestrian-friendly promenade. It provides views of the ocean and nearby landmarks, such as Diamond Head, in the distance. The site is situated within an active beach environment, accommodating both locals and visitors engaging in surfing and various recreational activities.

#### Project Description:

Following a feasibility study to assess potential options for replacing the surfboard storage racks damaged by a fire, the preferred solution was an open-air layout.

The proposed open-air maintains the general configuration of the original rack design setup but is adjusted to move away from the adjacent property line. The perimeter of the enclosure will be secured with a combination of fixed end cap walls, sliding gates, and fencing. This design can accommodate approximately 390 racks/lockers and offers the added benefit of minimizing impacts on existing site drainage and utilities.

#### Determination:

The Proposed Action involves the construction of surfboard storage racks to replace those damaged by a fire, with new design largely following the configuration outlined in the original design assessed in the August 1998 Final EA. Given these considerations, the Proposed Action is anticipated to result in direct, indirect and cumulative effects similar to those identified and analyzed in the 1998 Final EA.


The CCH's DOC has determined that the Proposed Action aligns with the findings of the previously prepared Final EA and Finding of No Significant Impact, and that a supplemental statement is not required. As a result, the Proposed Action can proceed without the need for additional environmental review under HRS Chapter 343.

Declaration of Determination:

The direct, cumulative, and potential impacts of the action described above have been considered pursuant to Chapter 343, HRS and Chapter 11-200.1, HAR. The DOC has determined that additional environmental review for the Proposed Action would not be required, as it is both a component of and is substantially similar in use and scale to actions that have previously been processed under a FONSI. Moreover, it has also been determined that the Proposed Action is anticipated to have direct, indirect, and cumulative effects similar to those analyzed under previously completed Chapter 343, HRS environmental review processes.

Should there be any questions, please contact John Condrey at 808-768-8468 or our consultant Ms. Harlee Meyers at 808-946-2277 from Wilson Okamoto Corporation.

Sincerely,

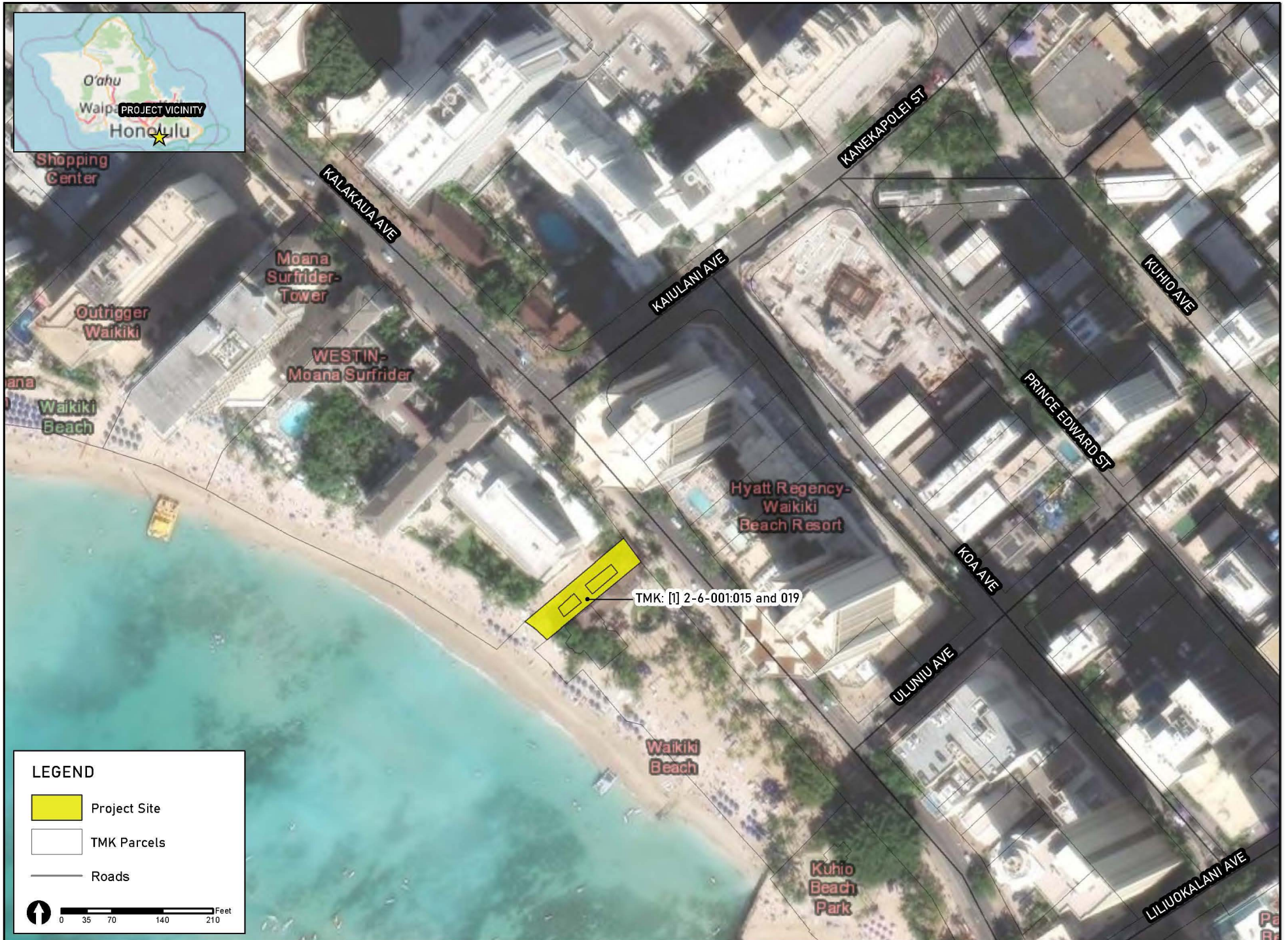
  
Haku Milles, P.E., LEED AP  
Director Designate

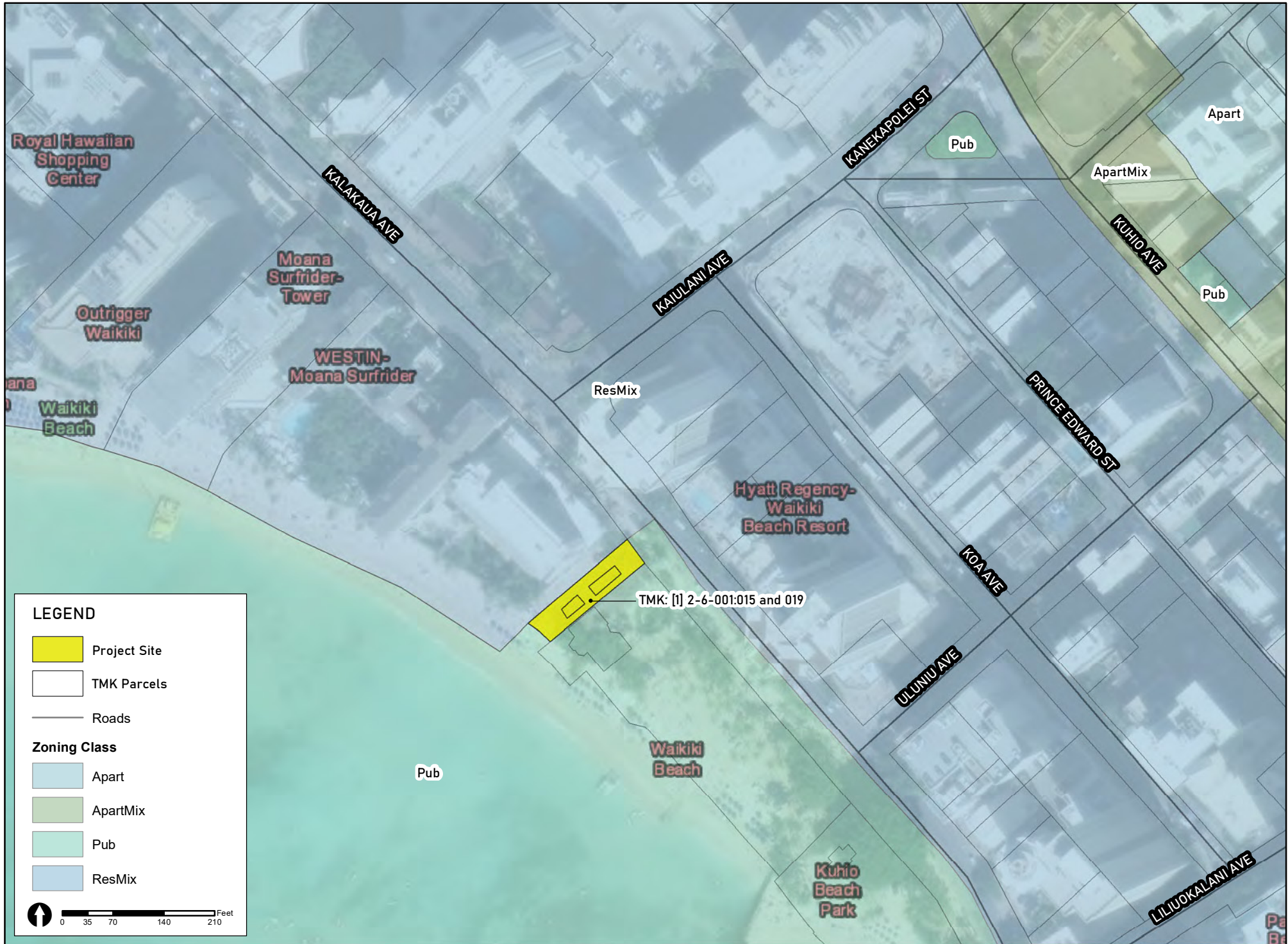
HM:ln

Enclosures



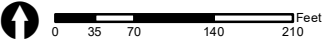
# FIGURE 1- PROJECT LOCATION MAP





LEGEND

- Project Site
- TMK Parcels
- Roads
- Zoning Class**
- Apart
- ApartMix
- Pub
- ResMix





# FIGURE 3- SPECIAL MANAGEMENT AREA

