

\*\*\*\*\*  
\* E I S N E W S L E T T E R \*  
\*\*\*\*\*

August 15  
II-31

*Persons interested in obtaining additional information should contact this Office at 550 Halekawila Street, Tani Office Building, Room 301, Honolulu, Hawaii, 96813 or call 548-6915.*

ANTICIPATED EIS

Kaneohe Civic Center (site selection), Maintenance of Harbors (dredging), Inter-Island Ferry System, and Oyster Propagation in Kaneohe Bay.

EIS NEWSLETTER  
(II-31)

OFFICE OF ENVIRONMENTAL QUALITY CONTROL

REQUEST FOR DRAFT ENVIRONMENTAL IMPACT  
STATEMENTS AND NEGATIVE DECLARATIONS

Sent to: \_\_\_\_\_  
\_\_\_\_\_  
\_\_\_\_\_

Contact: \_\_\_\_\_ Phone No. \_\_\_\_\_

Request a copy of the following:

1. \_\_\_\_\_
2. \_\_\_\_\_
3. \_\_\_\_\_

Date: \_\_\_\_\_

Return to: OFFICE OF ENVIRONMENTAL QUALITY CONTROL  
Office of the Governor  
550 Halekawila Street, Room 301  
Honolulu, Hawaii 96813

EIS REGISTER

The following Environmental Impact Statements are available for public review at these depositories: Office of Environmental Quality Control; The State Main Library; State Archives; DPED Library; Bishop Museum Library; Legislative Reference Bureau Library; Kaimuki, Kaneohe, Pearl City, Hilo, Wailuku and the Lihue Regional Libraries. In addition to the libraries listed above, distribution of the statements are frequently extended to include other nearby libraries (indicated with the project description).

Due to very limited request, Negative Declarations will remain to be available only at this Office.

Final Environmental Impact Statements

1. Puukapu Flood Control Project, Waimea, Hawaii-Dept. of Land & Natural Resources  
Previously reported in EIS Newsletter  
(To be distributed)  
Pending Governor's Acceptance
2. Fort Weaver Road Realignment & Widening, Honolulu, Oahu-Dept. of Transportation & U.S. Federal Highway Administration  
Previously reported in EIS Newsletter  
(To be distributed)  
Currently Being Processed by this Office
3. Interstate Route H-1 Kapiolani Interchange On-Ramp, Honolulu, Oahu-Dept. of Transportation, U.S. Federal Highway Administration  
Previously reported in EIS Newsletter  
(To be distributed)  
Pending Governor's Acceptance
4. Houselot Subdivision, North Kona, Hawaii-Dept. of Land & Natural Resources  
Previously reported in EIS Newsletter  
(Also available at the Kailua-Kona Library)  
Currently Being Processed by this Office
5. Capitol Mall Land Acquisition, Honolulu, Oahu-Dept. of Accounting & General Services  
Previously reported in EIS Newsletter  
(Also available at the Kalihi-Palama, Liliha & McCully-Moiliili Libraries)  
Pending Governor's acceptance
6. Field Test of the Submarine Sand Recovery System, Keahou, Hawaii-U.S. Dept. of Commerce  
The proposed action is a full-scale, long endurance, field test of a new system for mining ocean bottom sand. The system is designed for use from a small vessel and consists primarily of  
Currently Being Processed by

a suction probe which buries itself in thick deposit of sand by hydrojet action and removes large cones of sand. Approximately 30,000 cubic yards of sand are expected to be pumped to shore at a rate of 7,500 to 10,000 cubic yards per month from a deposit located in 50-60ft. of water approximately 300 to 600 ft. off shore. (To be distributed)

this Office

Draft Environmental Impact Statements

1. East West Center Facility, University of Hawaii, Manoa Campus, Oahu-Dept. of Accounting & General Services

Previously reported in EIS Newsletter  
(Also available at the Manoa & McCully-Moiliili Libraries) Aug. 16
2. Weliveli Subdivision, Koloe, Kauai-Hawaii Housing Authority

Previously reported in EIS Newsletter  
(Also available at the Hanapepe, Kapaa, & Waimea Libraries) Aug. 23
3. Waimea River Ford Crossing, Waimea, Kauai-Dept. of Public Works, County of Kauai

Previously reported in EIS Newsletter  
(Also available at the Hanapepe, Kapaa & Waimea Libraries) Aug. 23
4. Kealahala Stream Flood Control Project, Unit I, Phase Two, Kaneohe, Oahu-Dept. of Public Works, City & County of Honolulu

Previously reported in EIS Newsletter  
(Also available at the Kailua Library) Aug. 26
5. New Piilani Highway, Kihei to Makena Road/Kula Highway, Maui-Dept. of Transportation, U.S. Federal Highway Administration

Previously reported in EIS Newsletter  
(Also available at the Lahaina, Kahului & Makawao Libraries) Aug. 31

6. Construction of a Roadway Entrance to Leeward Community College, Ewa, Oahu-Dept. of Accounting & General Services

A proposed 60-foot roadway, .7 miles long, will be constructed from Waipio Point Access Road to a point mauka of the Waipahu Health Center. The roadway will consist of two travel lanes (about 10-12 feet wide), two parking lanes 18 to 10 feet wide) sidewalks and retaining walls. Utilities to be installed include the following: Street lighting, water lines, drainage pipes, sewer pipes, fire hydrants, telephone lines, storm drainage pipes, ditches

Sept. 6

and a sewer line.

- 7. Coconut Island Sewage Disposal Force Main, Kaneohe Bay, Oahu-Dept. of Accounting & General Services

The proposed project consists of the construction of a pumping station on Coconut Island and the installation of a sewage force main from the pumping station across the channel in Kaneohe Bay to connect to the existing sewerage system on the bay shoreline. The proposed pumping station (to be constructed on private property) will include a wet well with three slab-mounted sewage pumps. A major part of the force main will be located on private property, the remainder of the force main will be constructed on State lands before entering the channel. The proposed facilities will accommodate the needs for both the population of the private sector and Hawaii Institute of Marine Biology (HIMB) personnel.

Sept. 18

Environmental Assessment

- 1. Mauna Kea-An Overview, Mauna Kea, Hawaii-University of Hawaii, Institute for Astronomy

Previously reported in EIS Newsletter  
(Also available at the Honokaa, Kailua-Kona & Waimea Libraries)

Aug. 26

- 2. Hawaii Military Assistance to Safety & Traffic, Island of Oahu-Dept. of Health

Previously reported in EIS Newsletter

Aug. 30

Negative Declarations

- 1. Ainaola Drive Trunk Line and Supporting Facilities-Dept. of Water Supply, County of Hawaii  
The proposed project consists of the construction of a 500,000 gallon concrete reservoir and the installation of 4,500 feet of 12-inch pipeline.
- 2. Kahilina Place Drainage Improvement, Aiea, Oahu-Dept. of Public Works, City & County of Honolulu  
The existing drainage system is an unlined ditch located between Kahilina Place and Aiea Heights Drive. A four-foot wide reinforced concrete channel will be constructed to replace the existing ditch.
- 3. Po'ololo Well, Waialae-Iki Well, Keanu Well, Honolulu, Oahu  
Each of these projects involve the installation of one (1) pump pipes, electric equipment & appurtenances.

3. Board of Water Supply, City & County of Honolulu

4. Kealahou School, Portable Classroom, Kona, Hawaii-Dept. of Accounting & General Services

The project consists of constructing one (1) new portable wooden classroom (28'x32') to provide for additional classroom space.

5. Waimano Training School & Hospital Central Storage, Waimano, Oahu-Dept. of Accounting & General Services

A central storage facility for institutional supplies and equipment is proposed for the Waimano Training School and Hospital. A one-story building, 80 feet by 40 feet, will be constructed.

6. Aiea Intermediate School, Extension of Parking Lot, Honolulu, Oahu-Dept. of Accounting & General Services

The project consists of constructing a parking lot extension in a vacant area adjoining the school. The asphaltic pavement will encompass an area of approximately 25,000 sq. ft.

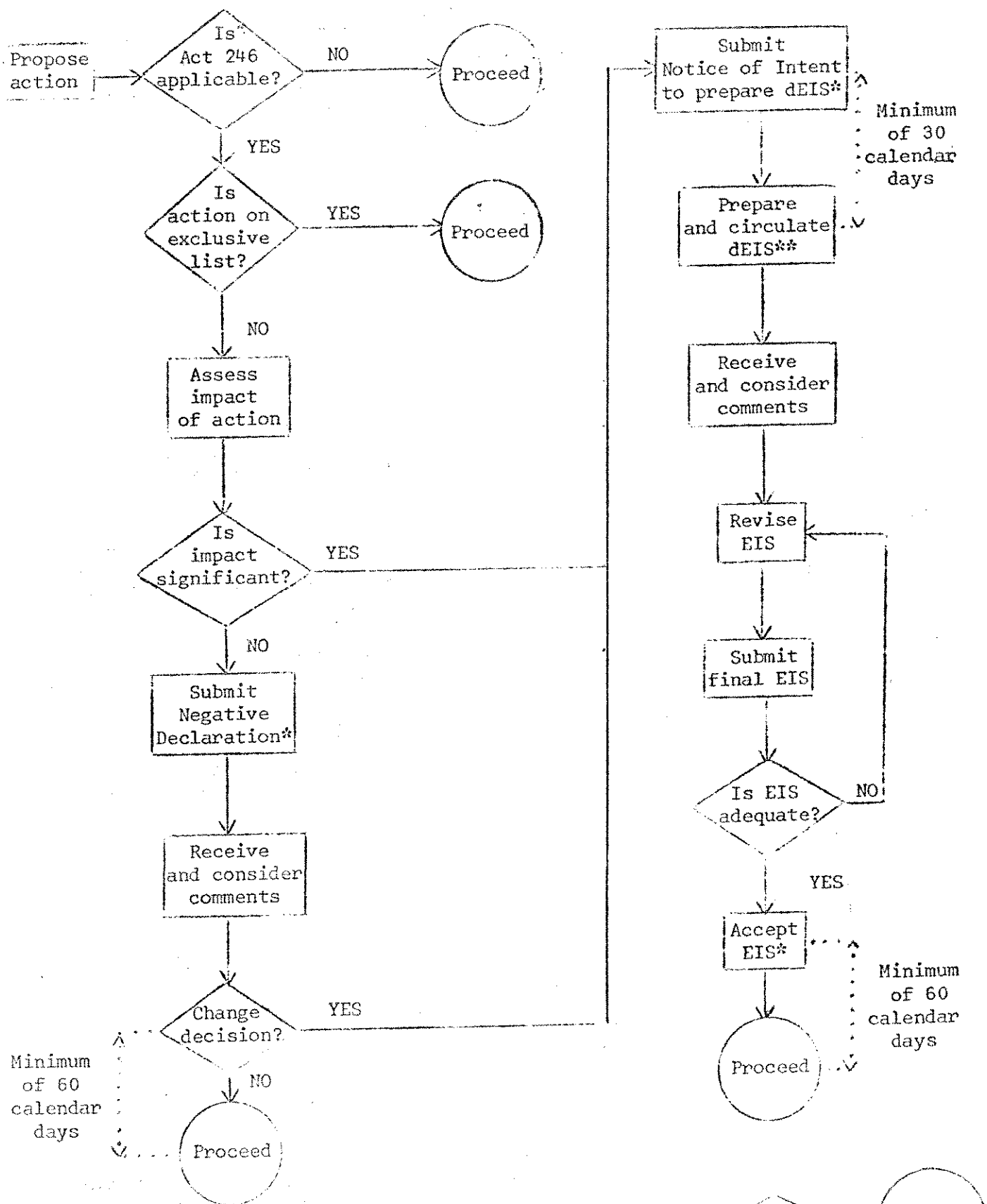
7. Proposed Substation, Kealahou, North Kona, Hawaii-Dept. of Land & Natural Resources

The proposed substation will be constructed on State lands identified by TMK 7-4-08:17. The subject facility will consist of a concrete slab to serve as the foundation for transformers and metal strut supports for high tension wires. The substation will be secured by chain link fencing and the grounds will be landscaped. This facility will be similar to the existing substation located mauka of the entrance to Keahou airport. The proposed Kealahou station will transform the existing 69 transmission voltage to 12KV electrical power for the existing and proposed industrial and commercial developments in the Kealahou area (The 69KV voltage is too high for consumer utilization).

8. Proposed Addition to a Cement Distribution Facility at Nawiliwili Boat Harbor, Nawiliwili, Kauai-Dept. of Transportation, Harbors Division

The proposed cement distribution facility addition will consist of a 30 ft. diameter cylindrical cement storage silo with a capacity of 9,000 barrels of cement (1,690 tons). The highest point of the new silo will be approximately 75 feet above the existing grade on the property. The proposed addition will be constructed on the present facility's property which is located at the intersection of Nawiliwili Avenue and Mokiha Street.

EIS FLOW CHART



\*Publish determination  
 \*\*Publish availability of dEIS for comments

ACTIVITY

DECISION

MILESTONE

## ENVIRONMENTAL QUALITY COMMISSION

Act 246, Session Laws of Hawaii, created an Environmental Quality Commission to adopt rules and regulations for environmental impact statements and to establish a process to implement the Act. The ten commissioners are:

Donald Bremner  
David Cheever  
Mrs. Lucille Creps  
Richard S. Dumancas  
Alan M. Goda  
Ralph Inouye  
Jerry M. Johnson  
Elmer D. "Red" Phillips  
Albert Q. Y. Tom  
James K. Trask, Jr.

Dr. Albert Tom has been appointed chairman of the Commission and Dr. Richard Marland, interim director of OEQC, is an ex-officio voting member.

A legal consultant has been retained for the Commission to draft proposed rules and regulations pursuant to Act 246. The draft document will be circulated to affected State and county agencies for preliminary comments as soon as possible. By mid-September, it is hoped that an acceptable draft of rules and regulations will be ready for public inspection; at that time, notices of public hearings will be published in the daily newspapers. Public hearings will be held in each county; two on the Big Island, two on Oahu, and one each on Kauai and Maui. Testimonies received at the hearings will be considered in revising the draft rules and regulations. The rules and regulations will cover: procedures for preparation, notification, review, and acceptance; criteria for significance; criteria for acceptability; procedures for appeals, and content requirements for EIS's. For further information on Act 246, the work of the Commission, or EIS's, please call 548-6915.

### EIS FLOW CHART

On the following page, a flow chart of the EIS process under Act 246 is reproduced for informational purposes. The chart attempts to synthesize the essential elements in the EIS process. The first decision which must be made is whether Act 246 is applicable to the proposed action. If yes, is the action already listed among classes of action having minimal or insignificant effects? If the action is not so excluded, then the action should be assessed for significance of effects.

If the action will have significant effects, a draft EIS should be prepared; a notice of intent to prepare a draft EIS should be initiated at the earliest possible time to alert the public and other agencies to a forthcoming EIS. If the action will not have significant effects, a negative declaration should be filed.

After 60 days has elapsed from the publication of either (1) a negative declaration; or (2) notice of acceptance, the proposed action may proceed. Although the flow chart is conceptual, it is hoped that readers of this Newsletter will find the chart useful in understanding the overall process.

## DOT ACTIONS EXEMPTED FROM EIS REQUIREMENTS

The Department of Transportation has compiled the following list of classes of actions for which an Environmental Impact Statement or Negative Declaration will not be filed. Projects included on this "exempt" list will be implemented according to the "usual DOT and State procedures."

1. Resurfacing, sealing and repairing roadway pavements and utilities in pavements, roadway shoulders, parking areas, airfields, and harbor storage and container areas.
2. Guard rail replacements, fencing, etc.
3. Bridge and other structural repairs.
4. Landscaping.
5. Installation of sprinkler systems.
6. Upgrading existing highway lighting systems, security lights, etc.
7. Minor spot drainage improvements and erosion controls, grading.
8. Minor spot safety improvements, traffic signal installation, traffic striping, traffic signs, etc.
9. Repair or replacement to frame, siding, floors, fixtures, windows, fire protection system, roofing, minor renovations, roll-up doors, and minor additions or modifications not exceeding 20% of the floor area.
10. Routine preventive maintenance such as repainting, reroofing, sand removal from boat launching ramps, etc.
11. Repair or replacement of fender systems, pipelines, and utilities.
12. Repairs or improvements to hatch frames and covers, catwalks, subsidences, loading docks and mooring facilities.
13. Replacement of bollards, pilings, and piers.
14. Demolition of piers and buildings.
15. Termite and other pest control treatment.
16. Repair and replacement of manholes and navigational bids.
17. Repairs to rockwalls, curbing, perimeter seawalls, groins, dikes breakwaters, and boat launching ramps.
18. Removal of silt and debris from above high water mark.
19. Installation of reefer outlets.
20. Sand replenishment to existing beaches.
21. Driveways: residential and commercial; subdivision road connections.
22. Utility service connection and installation along and across state highways, or road, overhead and/or underground.
23. Construction of bus shelters, telephone booths, sidewalks, and bike paths.



5

Published below is a list of Conservation District Use Applications received by the Department of Land and Natural Resources since July 15, 1974. The information provided includes project I.D. number, applicant name, use requested, and the reason why an EIS was not required. This notice of DLNR's actions is provided for informational purposes.

<u>APPLICATION</u>	<u>USE REQUESTED</u>	<u>REASON</u>
MA-6/19/74-569 Div. of Water and Land Dev. for Maui County BWS.	Pump, controls, pipeline Maui TMK: 3-3-03:5	Statement of non- impact filed by applicant with OEQC
HA-6/20/74-570 Loren Haffner	Residence Hawaii TMK: 1-5-88:20	Use is a modest request
MO-6/26/74-571 Edward J. Kanka	Residence, Workshop, storage Maui TMK: 5-9-05:20	Use is a modest request
MO-6/27-74-572 Puu Hoku Ranch	Beach park improvements Molokai TMK: 5-8-01:1	Use is a modest request
HA-7/1/74-574 County Dept. of Parks/Recreation	Wading Pond Hawaii TMK 3-6-02: 24,26	Final EIS approved
OA-6/21/74-575 C&C Bd. of Water Supply	Water resources develop- ment	Well is to be in an area zoned as water resource area.
HA-7/17/74-576 Div. Land Mgt. at the request of County BWS	Water System Hawaii TMK 1-4-01:4	Use previously approved