

EQC Bulletin

Environmental Quality Commission,
550 Halekiauila Street, Room 301, Honolulu, Hawaii 96813 - Phone: 548-6915

Vol II #13
July 8, 1976

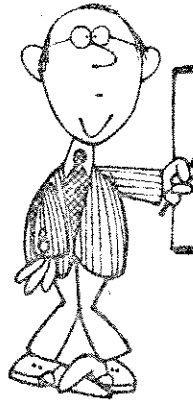
REGISTER OF CHPT. 343

DOCUMENTS

Environmental Impact Statements listed herein are available for review at the following public depositories: Environmental Quality Commission Office; Legislative Reference Bureau; Sinclair Library, State Main Library and the Kaimuki, Kaneohe, Pearl City, Hilo, Wailuku, and Lihue Regional Libraries. Statements are also available at State Branch Libraries that are in proximity to the site of a proposed action (indicated with project description).

EIS Preparation Notices are available from the respective proposing agency or applicant. Please request copies from the listed contacts. A 30 day period is allowed for requests to be a consulted party.

Negative Declarations are determinations by an agency that a given action does not have a significant effect on the environment and therefore does not require an EIS 1:4(p). Publication in the Bulletin of a Negative Declaration initiates a 60 day period during which comments may be made, or litigation measures initiated. Please send comments to the proposing agency or approving agency. The Commission would appreciate receiving a carbon copy of your comments.



EQC FILE MATERIALS

Request for materials from the EQC may be placed by telephone or letter. No charges are assessed for the following: a) Negative Declarations or other document prepared specifically for public review but available only at this office; b) Chapt. 343, HRS; c) Rules and Regulations of the Commission; d) notices or minutes of a Commission meeting; and e) EQC Bulletin subscription.

Charges for requested materials other than the above may be assessed to cover mailing and reproduction costs. Please pay by check or money order made out to the Environmental Quality Commission, State of Hawaii. Public officials and agencies in the State of Hawaii shall be provided copies of file material upon request at no charge (the rationale being that any charges assessed in these instances will constitute no more than the transfer of public funds from one agency to another.

EIS PREPARATION NOTICES

City and County of Honolulu

WASE KAKA'AKO AREA MAJOR DRAIN AND KAPIOLANI BLVD.-BERETANIA ST. RELIEF DRAIN

Dept. of Public Works
City & County of Honolulu

Previously reported in EQC
Bulletin II-12

Deadline: July 23

WAIHAWA CIVIC CENTER EXPAN- SION

Dept. of Accounting & General
Services

Previously reported in EQC
Bulletin II-12

Contact Mr. Lloyd Takahasi at
543-5460

Deadline: July 23

KAPAPA INFIRMARY AT KALAU- PANA LEPPUSY SETTLEMENT, MOLOKAI

Dept. of Accounting & General
Services

Previously reported in EQC Bulletin
II-12

Contact Mr. Henry Yasuda at
543-5742

Deadline: July 23

ANTICIPATED EIS'S

Maui County

Kahawao Intermediate School
Site Selection (DAGS);
Bulkhead and Other Improve-
ments at Kahului Harbor Maui
(DOT); Kahakuloa Water
Project (DLNR).

Honolulu Rapid Transit System (DTS,
City & County); Ewa High & Inter-
mediate School Site Selection (DAGS);
Leilehua High School Complex Deve-
lopment Report (DAGS); Wahiawa
Transfer Station & Landfill (DPW,
City & County); Waipahu Intermediate
School Complex Development Report
(DAGS); Physical Education Facilities
U.H. (DAGS); Kahuku High & Elementary
School Ultimate Site Plan Revision
(DAGS); Subdivision, Waikane (Wind-
ward Planners); Kam Hwy. Hunaahi St.
Relief Drain (DPW, City & County);
Maile Kai Elementary School Site
Selection (DAGS); Kahuku Support
Housing Project A 300 lot Subdivision
(DHCD, City & County).

Kauai Belt Road, Kalihiiwai to Haena
(DOT); Kapaa Wastewater Facilities
(DPW, Kauai County); Zoning Change,
Lihue Airport Master Plan (DOT).

Hawaii County

Kohala High & Elementary School
Complex Development Report (DAGS);
Natural Energy Laboratory of Hawaii
at Keahole Pt. (U.H.); Kona Multi-
Agency Maintenance and Service Faci-
lity Site Selection (DAGS); Kailua-
Keauhou Elementary School Site
Selection (DAGS); Student Health
Center, P.E. Education Facilities,
Fine Art Bldg., Auditorium-Theater
and Classroom Bldg., No. 3 at U.H.
at Hilo (DAGS); Hawaii Belt Road,
Holualoa to Pepee (DOT); Cattle
Grazing - Kohala (Hawaiian Holidays,
Inc./DLNR); Consolidation and Resub-
division of TLR's 8-2-8:1, 8-2-8:15-17,
28, 31, 38 South Kona (Planning Dept.,
County of Hawaii); Overnight Camping &
Motorcycle Rider's Training Area &
Motorcycle Recreation Use (Big Island
Motorcycle Assoc./DLNR).

ENVIRONMENTAL IMPACT STATEMENTS

HONOULIULI INTERCEPTOR SEWER SYSTEM. Dept. of Public Works
City and County of Honolulu

CENTRAL MAUI WATER TRANSMISSION SYSTEM. Waiehu-Makena. Board of Water Supply. County of Maui.

Previously reported in EQC Bulletin II-12

Deadline for comments: July 23.

Construction and installation of a water transmission system beginning from Waiehu in north-west Maui and crossing the central isthmus to Makena in south Maui. The pipeline will vary between 12 to 42 inches in size. Water will be supplied to Wailuku-Kahului, Paia, Kuau on to Hookepa, Waikapu, Waiehu-Waihee, and Maalaea-Kihei-Makena. Also available at Makawao, Kahului and Lahaina Libraries.

Deadline for comments: August 7

KALAKAUA COMMERCIAL COMPLEX, WAIKIKI, HELUMOA LAND CO. (Environmental Communications, Inc.) Dept. of Land Utilization, C&C of Honolulu.

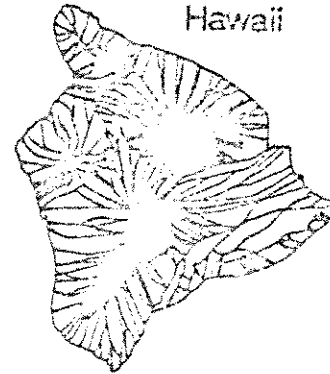
Development of a multi-level shopping complex within a 6.25 acre parcel on the makai side of Kalakaua Ave. bounded by Lewers St. and the Outrigger Hotel. The proposal provides for a total of approx. 275,000 sq. ft. of gross leasable area, of which approx. 165,000 sq. ft. will be provided in the first phase and 110,000 sq. ft. in the second phase. The project will consist of 3 low-rise bldgs., two of 4 stories and one of 3 stories

A 10-story parking structure will also be included to provide parking for approx. 600 cars at the Lewers St. and of the project just mauka of the Sheraton garage. Also available at Waikiki-Kapahulu McCully-Moiliili Libraries.

Deadline for comments: August 7

NEGATIVE DECLARATIONS

Hawaii



EXPLORATORY WELL DRILLED BY THE HAWAII GEOTHERMAL PROJECT. PART I AND II University of Hawaii

Drilling of the exploratory well began in late December 1975 and as of March 25, 1976, had reached the level of approx. 2,000 ft. Subject to budget limits, it is planned to drill down to 5,000 or 6,000 ft., starting at an elevation of approx. 600 ft. above sea level. The drill site is approx. 3 miles east of Pahoa on Pohoiki Rd., about 3 miles in from the coast.

KULAIMANO WATER FACILITIES/DRILLING OF EXPLORATORY WELL, SOUTH HILO. Dept. of Water Supply, County of Hawaii.

A project that will consist of drilling a well for a reliable ground water source to supplement the existing surface water source. The well will be located makai of the Kulaimano Heights Subdivision where a community development plan is being concentrated on. The project phases will include: 1) drilling and testing of the well, 2) furnishing and installing pumps, and 3) furnishing and installing transmission mains.

Mauai



MAUI MEDICAL GROUP BUILDING
RENOVATIONS Maui Medical
Group, Maui Historic Commission

LAHAINA EMERGENCY AND HEALTH
CENTER AT LAHAINA CIVIC AND
RECREATIONAL CENTER COMPLEX,
Wahikuli, Lahaina
Dept. of Accounting and
General Services

This project will be located within the Lahaina Civic and Recreation Center Complex which is situated about 1/2 mile northwest of the Wahikuli Residential Subdivision and mauka of Honeapiilani Hwy. Estimated gross area of the development will be 11,025 sq. ft. The following programs will be provided: emergency care, clinic, ambulance service, and public health nursing and mental health.

RELOCATE OUTER MARKER
FACILITY INSTRUMENT LANDING
SYSTEM, KAHULUI AIRPORT
Dept. of Transportation
Federal Aviation Administration

Relocation of the Outer Marker Facility serving Runway 2, Kahului, from a point 3.5 nautical miles to a point 6.2 nautical miles away from the runway threshold. Located along Kihei Rd., the project will consist of the following: 1) clear and grade for 20 ft. by 35 ft. plot, 2) construct a 2 ft. 6-inch wide by 3 ft. long by 3 ft. high shed for a portable engine-generator, 3) construct a 6 ft. sq. by 8 ft. high electronic equipment shelter, 4) install a 60-watt thermoelectric generator and a 288 gal. propane storage tank, 5) install a V-Yagi antenna on a 17 ft. high wood pole, and 6) perimeter fencing.

Construction of a second-story addition to the existing two-story medical building located on the southeast corner of Prison and Laskina Streets in Lahaina. The subject parcel, a consolidation of two lots, comprises a land area of 38,180 sq. ft. The project will add 2,000 sq. ft. to the 2nd floor of the existing building.



Kauai

BEACH EROSION CONTROL FOR
KAPAA BEACH, Dept. of
Public Works, County of Kauai

The project will consist of restoring approx. 400 ft. of beach by the placement of nearly 6,000 cubic yards of sand from the canal. Additionally, the plan provides for the construction of a rubble mound groin along the alignment of Moikeha Canal jetty and a 100 ft. revetment along the Northerly bank of the canal between the roof of the groin and the Easterly railroad trestle. A drainage and flood control and bank stabilization project is also being proposed. This action will consist of dredging the silted Moikeha drainage Canal and the construction of revetment along both banks. The limits for dredging and the revetment will extend from Kuhie Hwy. in a seaward direction to match the existing revetment along the banks.

ISENBERG PARK Dept. of Public Works, County of Kauai

Development of a recreational park encompassing an area of 9.132 acres in Lihue. The project is located on the corner of Eono St. and Noi St. The proposal will consist of the following improvements: 1) softball field with backstop, dug-outs, bleachers, lighting and announcers stand; 2) two practice football fields; 3) three basketball courts with lighting; 4) paved parking-69 stalls; 5) fencing; 6) portable water system; 7) irrigation system; and 8) provision of proper drainage system.

REPLACE STANDBY ENGINE/GENERATOR, COMBINED STATION/TOWER. Lihue Airport. Dept. of Transportation, Federal Aviation Administration.

Replacement of a portable engine/generator with a van-mounted diesel engine/generator for the combined station/tower at Lihue Airport. The scope of the project includes the construction of an 11' X 24' concrete pad, installation of an 8' X 24' X 8.75' high engine generator van, installation of a 1,000 gal. underground fuel oil storage tank, fuel oil piping, and the installation of 2-2 1/2" electrical conduits and cables.

Oahu



KAIMILOA ELEMENTARY SCHOOL KITCHEN MULTI-PURPOSE DINING ROOM BLDG. EWA BEACH Dept. of Accounting and General Services

Construction of a kitchen multi-purpose dining room building of an area of 6,350 sq. ft. within the existing school site.

TELEVISION TRANSLATOR FACILITY. PUU MANAWAHU, HONOLULIULI FOREST RESERVE, EWA Office of Human Resources, City and County of Honolulu

This project will provide 5 television translator at the site, which will convert existing VHF television signals to UHF television signals for transmission to the Wai-anae Coast and valley communities to bring clear, audible television reception. Improvement at the site include the erection of a 40 ft. self-supporting steel tower on the existing concrete MTR platform to support the UHF transmitting antennae, erection of two 14 ft. pipe-masts on the existing concrete TTR platform to support the VHF receiving antennae, the construction of a 10' X 16' equipment building, installation of translator and other television communications equipment, an underground duct system, and associated supply from Hawaiian Electric Co.

APPLICATION FOR PLANNING GRANT FISCAL YEAR 1977. State Law Enforcement and Juvenile Delinquency.

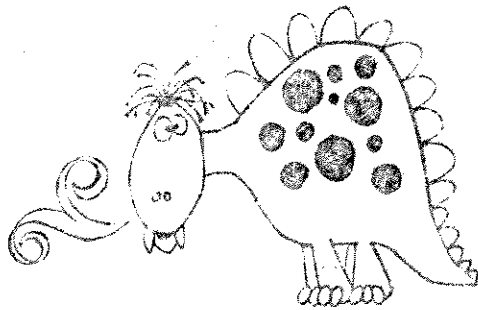
Planning Grant funds are utilized to cover the costs of the State Law Enforcement Juvenile Delinquency Planning Agency and also the 4 County planning offices for the purpose of criminal justice planning and programming. The agency's basic task is to comply with the regulations of the Law Enforcement Assistance Administration in order to qualify the State, local units of government, and public and private agencies for financial assistance.

WAIPAHU HIGH SCHOOL STUDENT CENTER. Dept. of Accounting and General Services

A project to construct a student center building covering an area of 5,336 sq. ft. within the existing school campus.

LOCATION AND ACTIVATION OF TELEVISION SATELLITE TERMINAL. Honolulu University of Hawaii

Research, construction, and monitoring of a television satellite receive-only station on U.H. property between the University High School Cafetorium and the Hawaii Public Broadcasting Authority building. The project will feature the use of a 32 ft. diameter parabolic dish mounted on a concrete pad approx. 30 ft. X 30 ft.



Protect our environment !

HAWAII SCHOOL FOR THE DEAF AND BLIND LIBRARY BUILDING. Dept. of Accounting and General Services

This action will consist of constructing a 5,100 sq. ft. library. The school is located between Kanaina Ave. and Leahi Ave.

KING HIGH AND INTERMEDIATE SCHOOL LIBRARY. Dept. of Accounting and General Services

The proposed 12,300 sq. ft. library will be constructed within the existing school site in Heeia.

JEFFERSON ELEMENTARY SCHOOL ADMINISTRATION BLDG. Dept. of Accounting and General Services

Construction of a one story administration building consisting of approx. 2,900 sq. ft. Located between Ala Wai Blvd. and Kuhio Ave., the project will include the demolition of the existing administration and library building.

4

EXEMPTION LISTS: The following exemption lists has been filed with the Environmental Quality Commission. Comments received by August 7 will be considered by the Commission in its reviewal of the list.

BUILDING DEPT., C. & C. OF HONOLULU

Exemption Class #2: Replacement or construction of existing structures and facilities where the new structure will be located generally on the same site and will have substantially the same purpose, capacity, density, height and dimensions as the structure replaced.

1. Above ground emergency fuel tank replacement.
2. Water line replacement.
3. House sewer replacement.
4. Sprinkler System replacement.

Exemption Class #3: Construction and location of single, new small facilities or structures and the alteration and modification of same and installation of new, small equipment and facilities and the alteration and modification of same.

1. Above ground emergency fuel tank.
2. Retaining wall less than 5 feet in height.

Exemption Class #7: Construction or placement of minor structures accessory to existing facilities.

1. Above ground emergency fuel tank.
2. Fence and wall.

DEPARTMENT OF DEFENSE, STATE OF HAWAII

I. OPERATIONS, REPAIRS OR MAINTENANCE CLASS

1. Reroofing
2. Fumigation
3. Replacing water and sewer lines
4. Termite treatment
5. Repairing damaged building
6. Exterior painting
7. Automobile and equipment repair, including sanding and painting
8. Weapons firing on all islands

9. Daily flying of helicopters
 10. Operation of tactical vehicles and other equipment on a daily basis and during Annual Training and Inactive Duty Training
-
11. Scheduled or unscheduled maintenance to include "lubrication" and major servicing of vehicles and associated equipment
 12. Moving of equipment to and from maintenance facilities for the purpose of delivery or acceptance of equipment

II. REPLACEMENT OR RECONSTRUCTION CLASS

1. Replacement of obsolete building uneconomical to rehabilitate
2. Rehabilitation of buildings

III. CONSTRUCTION, ALTERATION, MODIFICATION, AND INSTALLATION OF FACILITIES OR STRUCTURES CLASS

1. Installation of water and/or sewer lines
2. Construction and installation of guard rails
3. Minor exterior alterations and modifications of existing buildings or structures
4. Civil Defense warning sirens
5. Radio antennas not more than 20 feet above the ground, or not more than 20 feet above the tree, natural formation, or existing manmade structure on which it is mounted

IV. MINOR ALTERATION OF LAND, WATER, OR VEGETATION CLASS

1. Resurfacing existing pavement
2. Upgrading surface, e.g., A.C. paving, concrete slabs
3. Security lighting
4. Replanting of shrubs
5. Refencing
6. Tree trimming
7. Installation of lawn sprinkler system
8. Mowing and cutting of grass and shrubs
9. Insect and weed control spraying
10. Fertilizing of vegetation

V. BASIC DATA COLLECTION AND RESEARCH CLASS

None

VI. ADMINISTRATIVE ACTIVITIES CLASS

1. Purchase of normal supplies
2. Hiring and/or firing of work force where the hiring and/or firing is less than 3% of the local community population
3. Annual and weekend training for National Guard personnel
4. Purchase of motor vehicles and equipment
5. Unit recruiting drives to include recruiting displays and publicity programs for National Guard personnel
6. Movement of National Guard personnel during Annual Training (Schofield and Pohakuloa Training Area)
7. Unit training on Continental United States for National Guard personnel
8. Attendance at military schools (Continental United States and Schofield)

VII. CONSTRUCTION ACCESSORY TO EXISTING FACILITY CLASS

1. Minor building additions
2. Extension of roof
3. Construction of walkways and sidewalks
4. Installation of concrete slabs for tents

VIII. INTERIOR ALTERATION CLASS

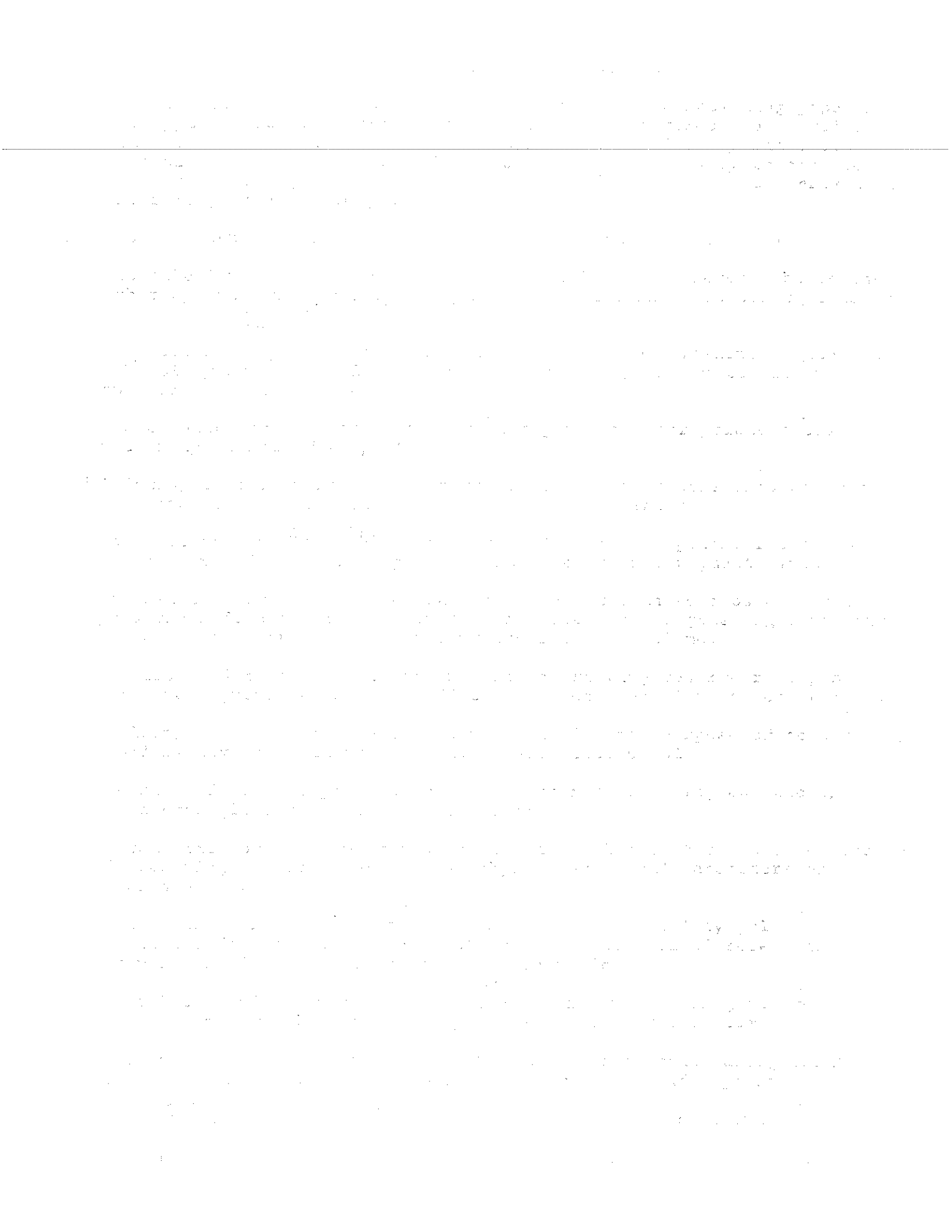
1. Addition or removal of partitions
2. Painting
3. Installation of electrical service
4. Installation of Intrusion Detection System
5. Installation of ventilators or air conditioning
6. Installation of Fire Alarm System
7. Installation of fire sprinkler system
8. Floor and ceiling covering

IX. DEMOLITION CLASS

1. Demolition of obsolete or unused buildings or structures

X. ZONING VARIANCE CLASS

None



- 18. Installation of electric generators and mechanical pumps for effective operation of the water system.
- 19. Construction or reconstruction of signs.

DEPT. OF LAND AND NATURAL RESOURCES

A new exemption class, requested by DLNR to be added to the existing list of exempt classes of action, is as follows

- 1. Single-family Residence

DEPT. OF TRANSPORTATION

As requested by the DOT, the new class of action proposed to be included to the existing categorical exemption list is as follows: "Paving of shoulder areas within existing highway rights-of-way for driveways and subdivision street connections."

REGISTER OF SHORELINE PROTECTION ACT OCCURRENCE

The following documents have been filed with the City and County Department of Utilization pursuant to Ordinance 407, relating to be in the Shoreline Protection District for Oahu. All of the projects below are located within the Special Management Area of Oahu.

DEVELOPMENT PREPARATION NOTICE

DEVELOPMENT, LAND USE DEVELOP-
MENT CO. Kahuku, Kauai, Oahu

The applicant proposes to subdivide a total of nearly 100 acres of urban land for the purpose of constructing roadways and installing utilities. Adjoining subdivided lots zoned A-1, apartment, and B-1, residential, presently vacant, could then be leased for development purposes. The site is identified by WAK 8-9-01.

Contact: Sunn, Low, Tom & Hana
Inc. 190 S. King St
Suite 500, Honolulu,
Hawaii 96811

NEGATIVE DECLARATION

RESIDENTIAL RELOCATION & DEVELOP-
MENT, HIRSH FONG, JR. et al.

A 9-lot subdivision of a 1.2+ acre parcel located makai of Kamehameha Hwy between Halaawa St. and the coast. The proposal includes relocation of 4 dwelling units, demolition of 1 dwelling unit and construction of 3 dwelling units. The site is identified by WAK 8-9-1-23.

Contact: Gerald Pang 1232 Waimanu
St. Rm. C Honolulu, HI.
96814