

# Site Selection Process in Hawaii

## Phase I

- Draft Criteria
- Secure Consultant
- Form Site Evaluation & Selection Committees (SEC, SSC)
- Solicit public for potential sites
- Examine and analyze sites (SEC)
- Forward site list to SSC

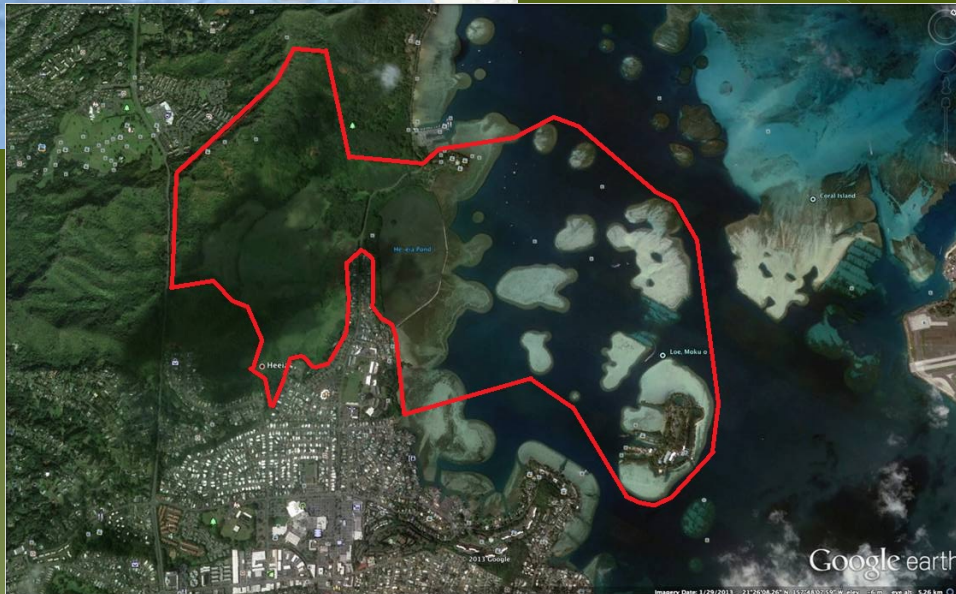
## Phase II

- Review site list (SSC)
- Select preferred site (SSC)
- Hold public meeting in vicinity of preferred site
- Forward site selection document to Governor
- Nominate site to NOAA (Governor)

## Phase III

- Delineate boundary
- Develop Management Plan
- Prepare EIS (NEPA) Document

# Benefits for the Selected Site



- Support for local coastal management goals
- NOAA technical expertise and opportunities
- Support for research, monitoring, education, stewardship and training
- Support for land acquisition and facility construction
- Become part of a national network