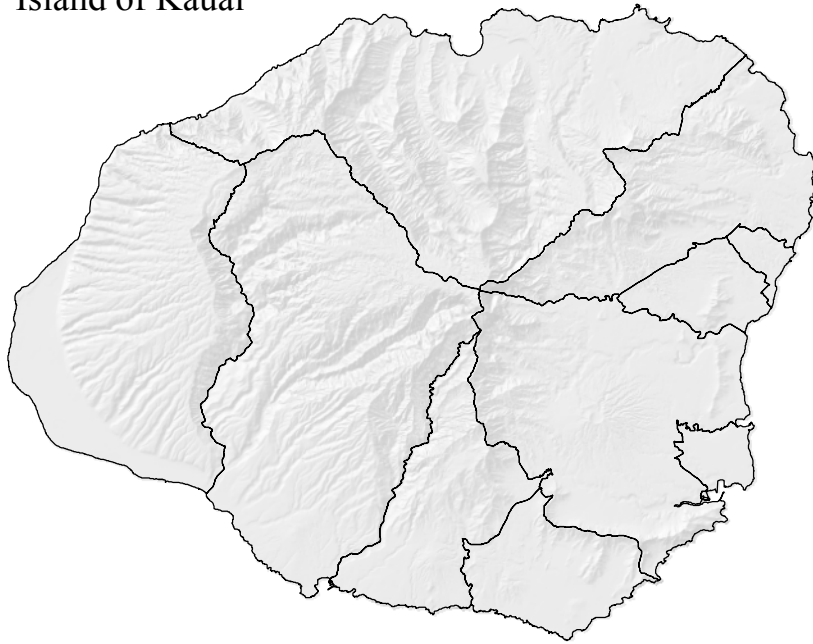
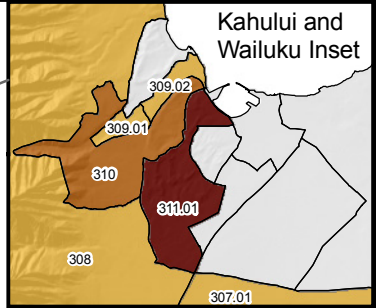
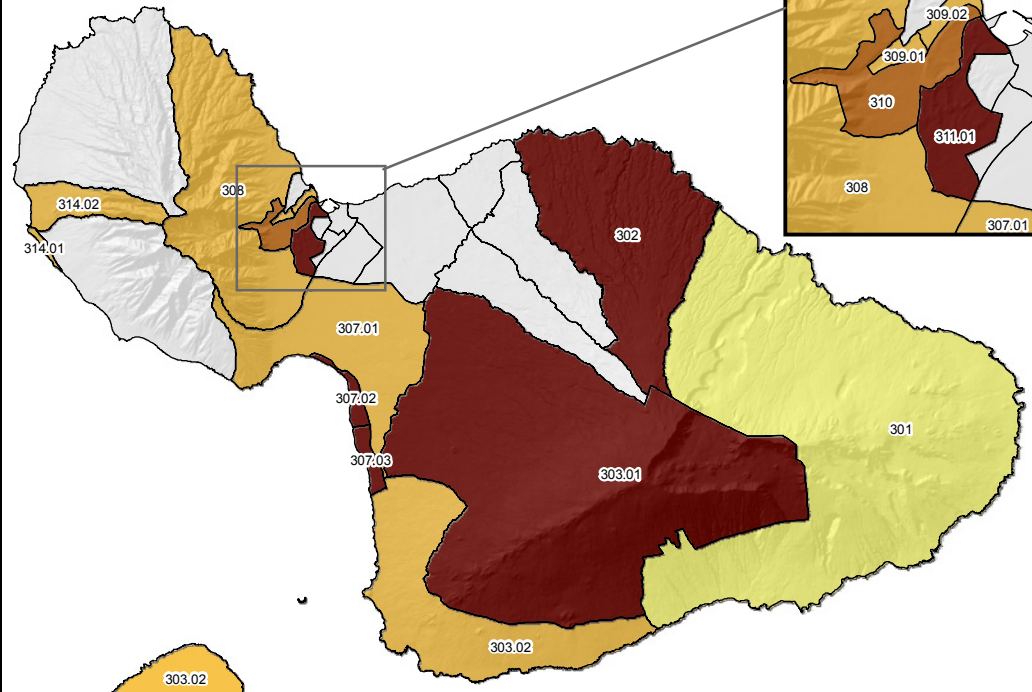


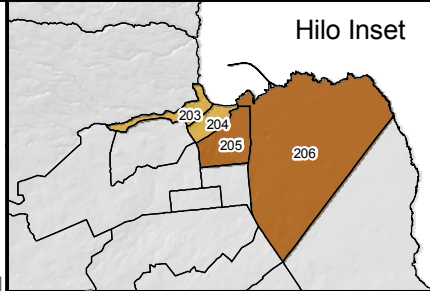
### Island of Kauai



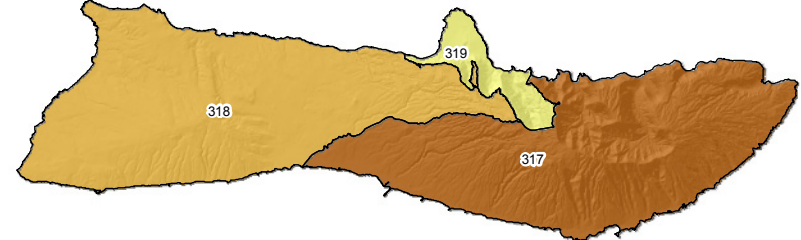
### Island of Maui



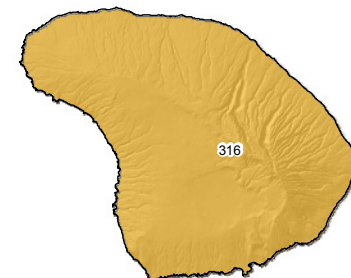
### Hilo Inset



### Island of Molokai



### Island of Lanai

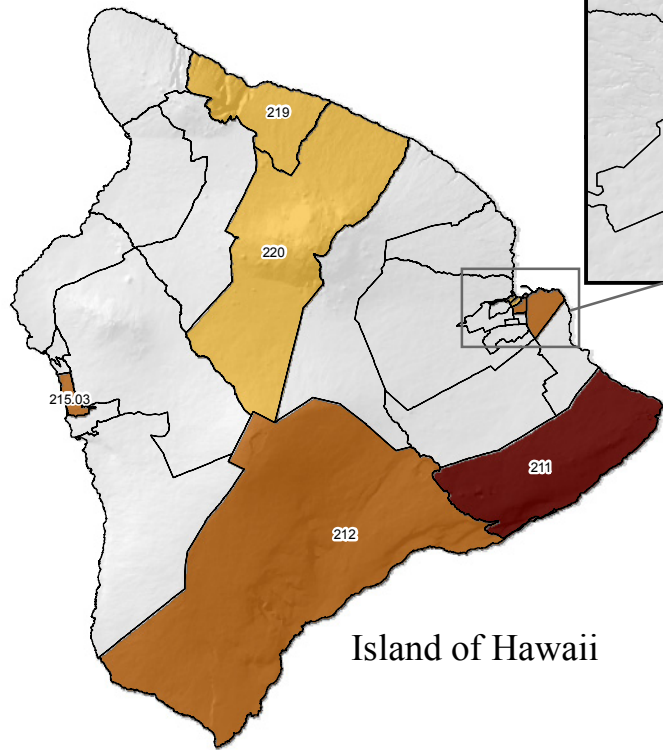


### Neighbor Islands 2010 Census Hard-To-Count Areas

2000 Population

<span style="display:inline-block; width:15px; height:15px; background-color:yellow; border:1px solid black;"></span>	147 - 2,000
<span style="display:inline-block; width:15px; height:15px; background-color:yelloworange; border:1px solid black;"></span>	2,000 - 4,000
<span style="display:inline-block; width:15px; height:15px; background-color:orange; border:1px solid black;"></span>	4,000 - 6,000
<span style="display:inline-block; width:15px; height:15px; background-color:darkred; border:1px solid black;"></span>	6,000 - 8,597

This map was produced by the Office of Planning (OP) for planning purposes. It should not be used for boundary interpretations or other spatial analysis beyond the limitations of the data. Information regarding compilation dates and accuracy of the data presented can be obtained from OP.  
 Map Date: 09/14/09  
 Map No.: 20090914-02-DK  
 Source: U.S. Census Bureau.



### Island of Hawaii

