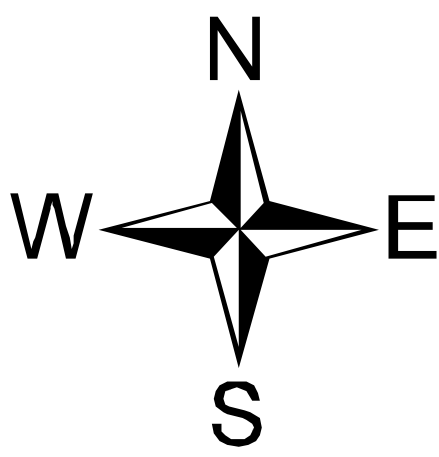


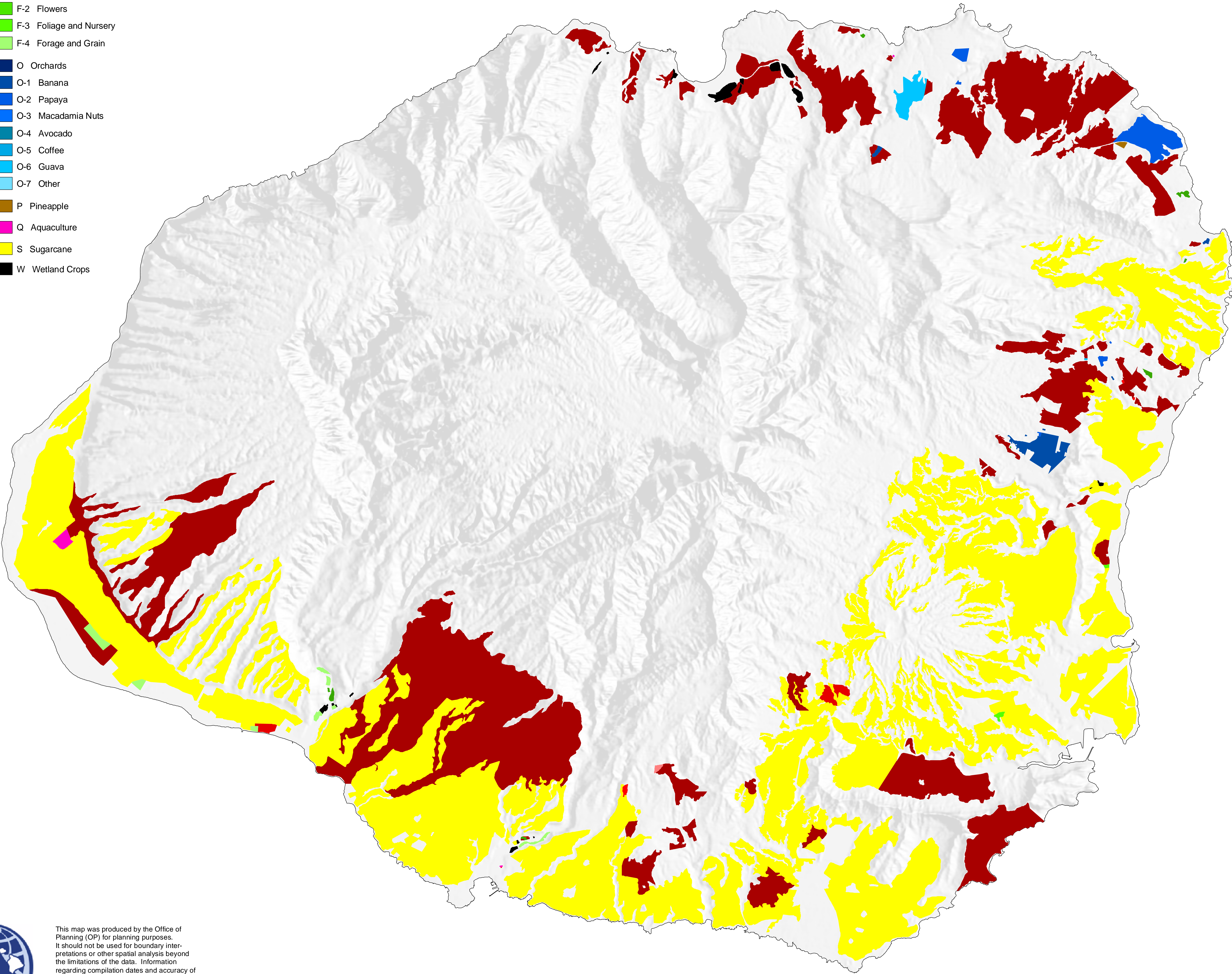
Island of Kauai

Agricultural Land Use (1978-1980)

- A Animal Husbandry
 - A-1 Grazing
 - A-2 Dairy
 - A-3 Hog
 - A-4 Poultry
- F Field Crops
 - F-1 Vegetables / Melons
 - F-2 Flowers
 - F-3 Foliage and Nursery
 - F-4 Forage and Grain
- O Orchards
 - O-1 Banana
 - O-2 Papaya
 - O-3 Macadamia Nuts
 - O-4 Avocado
 - O-5 Coffee
 - O-6 Guava
 - O-7 Other
- P Pineapple
- Q Aquaculture
- S Sugarcane
- W Wetland Crops



0 2.5 5 10 Miles



This map was produced by the Office of Planning (OP) for planning purposes. It should not be used for boundary interpretations or other spatial analysis beyond the limitations of the data. Information regarding compilation dates and accuracy of the data presented can be obtained from OP. Date: 3/25/03

Source:
ALUM - State Department of Agriculture 1:24,000 hand drafted
stabilized maps, compiled and drafted during 1978-80
from information from State DOA Planning and Development
Section, and the US Soil Conservation Service.