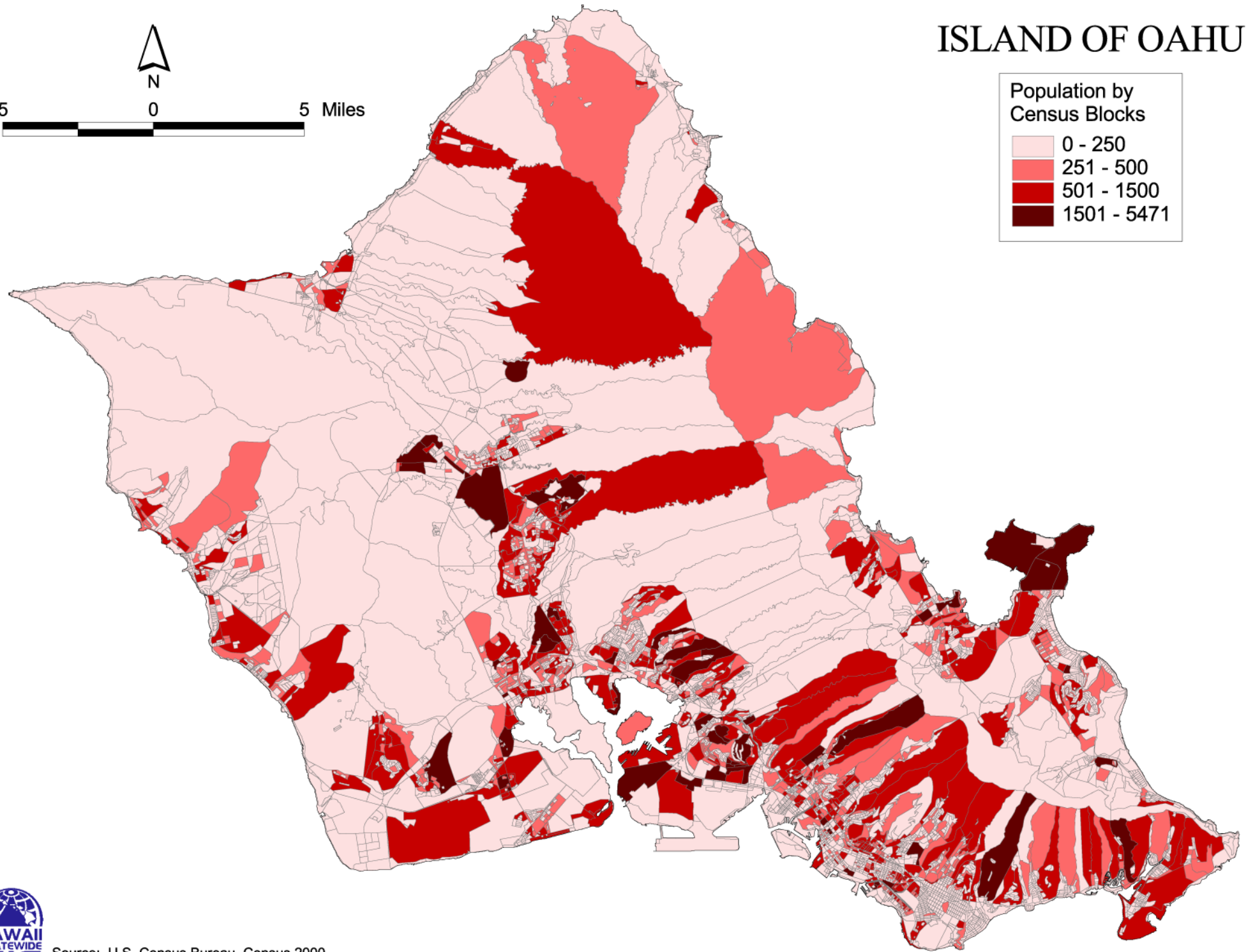
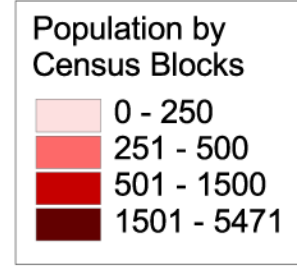
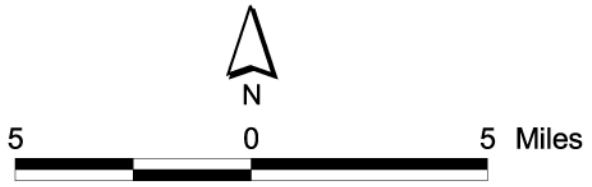
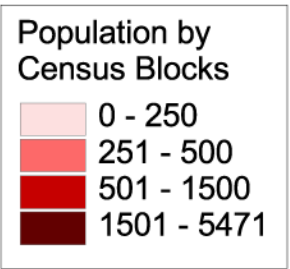


ISLAND OF OAHU

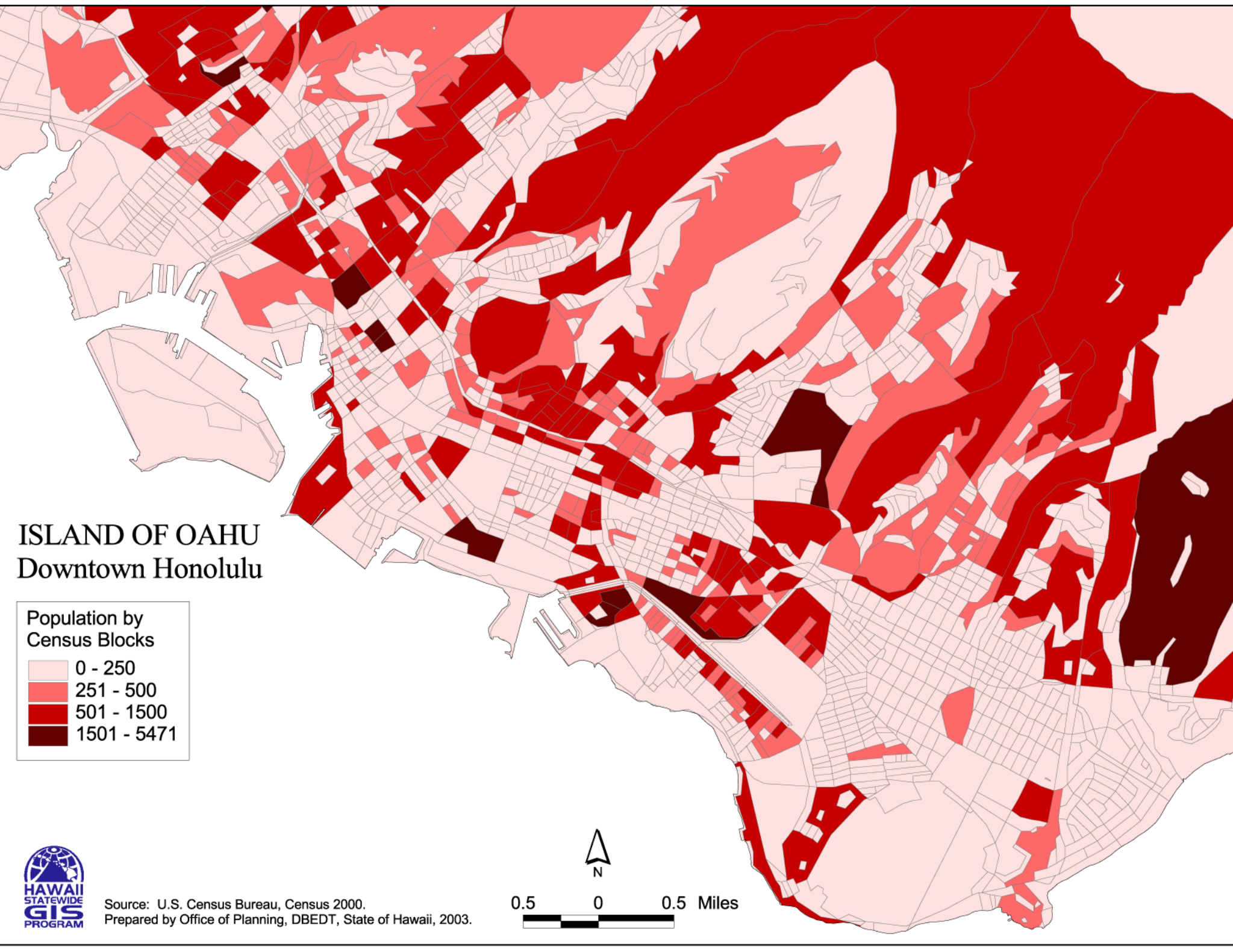
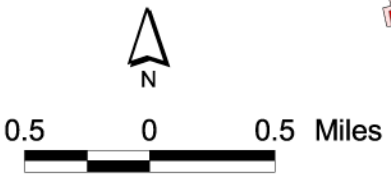


Source: U.S. Census Bureau, Census 2000.
Prepared by Office of Planning, DBEDT State of Hawaii, 2003.

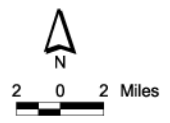
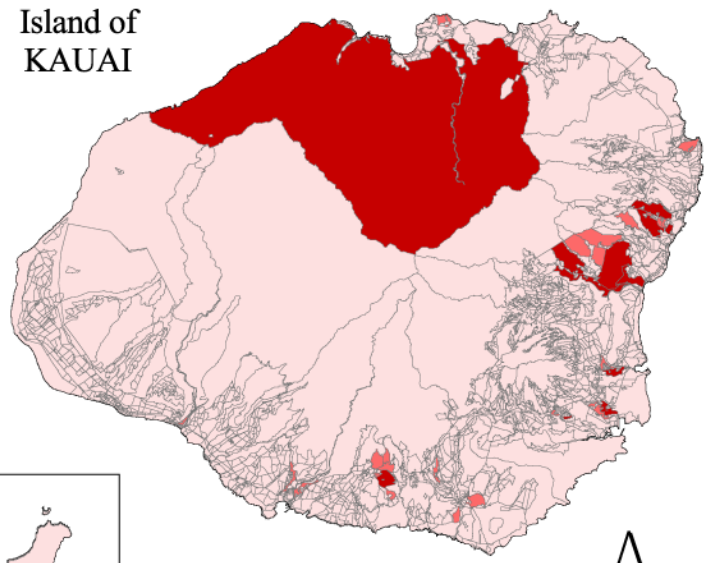
ISLAND OF OAHU Downtown Honolulu



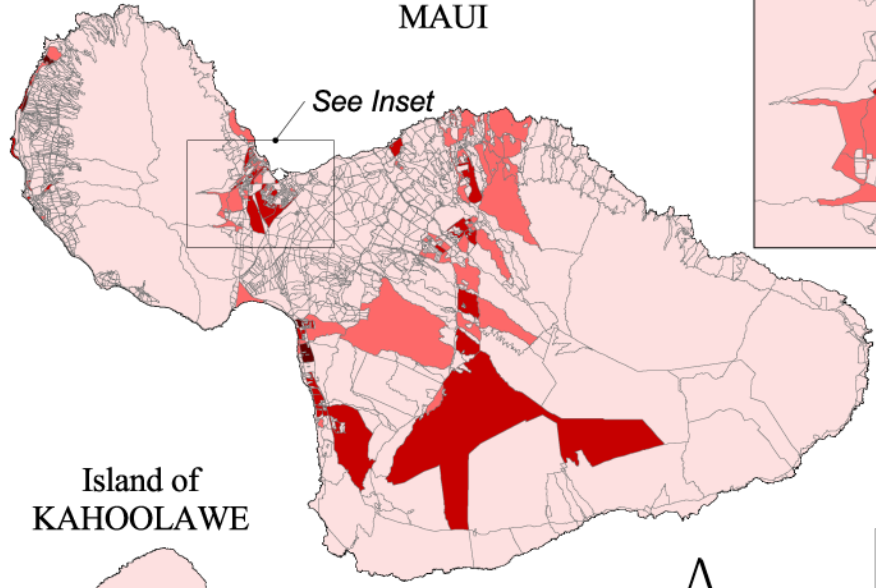
Source: U.S. Census Bureau, Census 2000.
Prepared by Office of Planning, DBEDT, State of Hawaii, 2003.



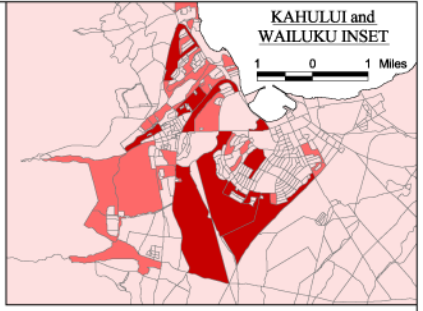
Island of KAUAI



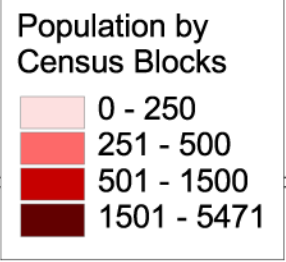
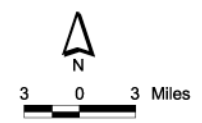
Island of MAUI



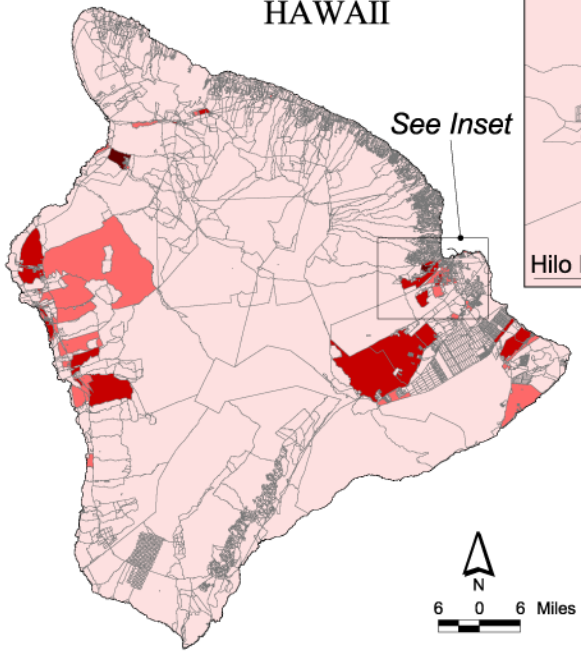
See Inset



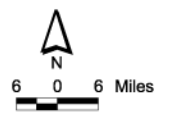
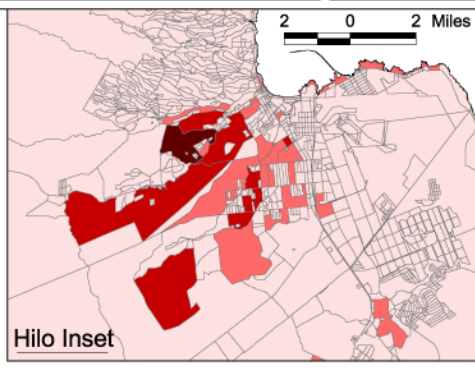
Island of KAHOO LAWE



Island of HAWAII



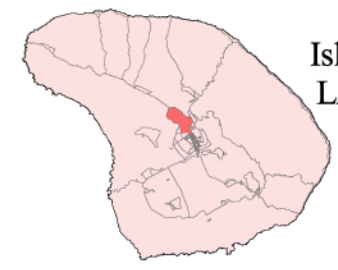
See Inset



Island of MOLOKAI



Island of LANAI



Population by 2000 Census Blocks

Prepared by
 OFFICE OF PLANNING
 DEPARTMENT OF BUSINESS, ECONOMIC DEVELOPMENT & TOURISM
 STATE OF HAWAII

2003

Source: U.S. Census Bureau, Census 2000.

