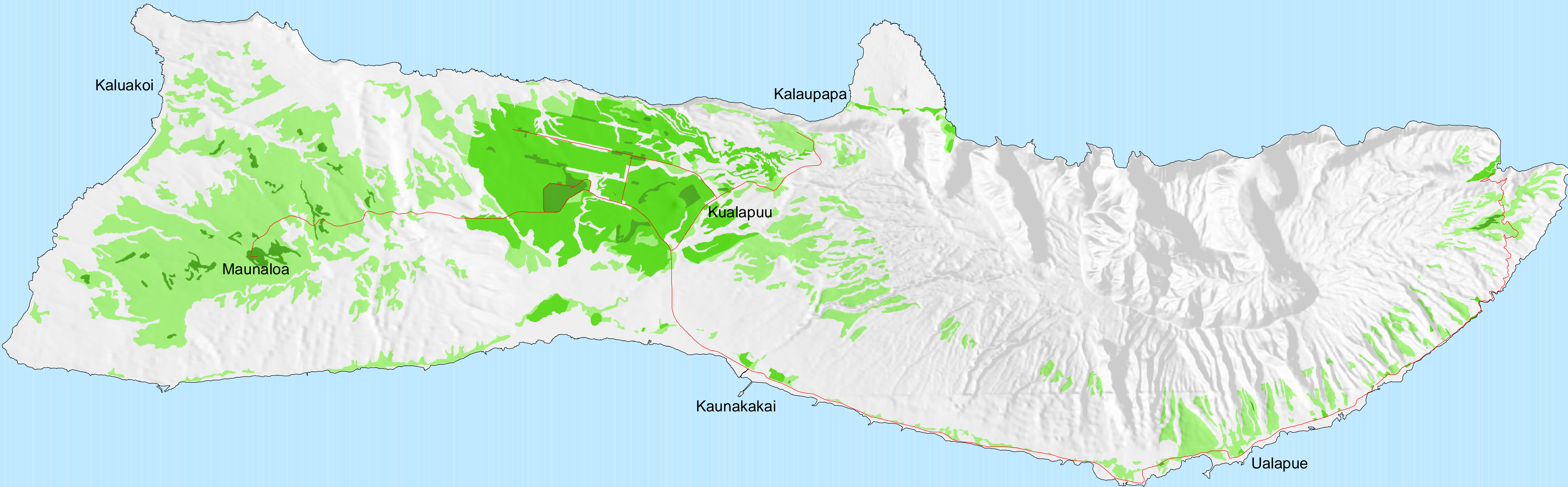


Molokai

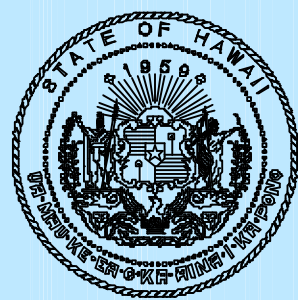
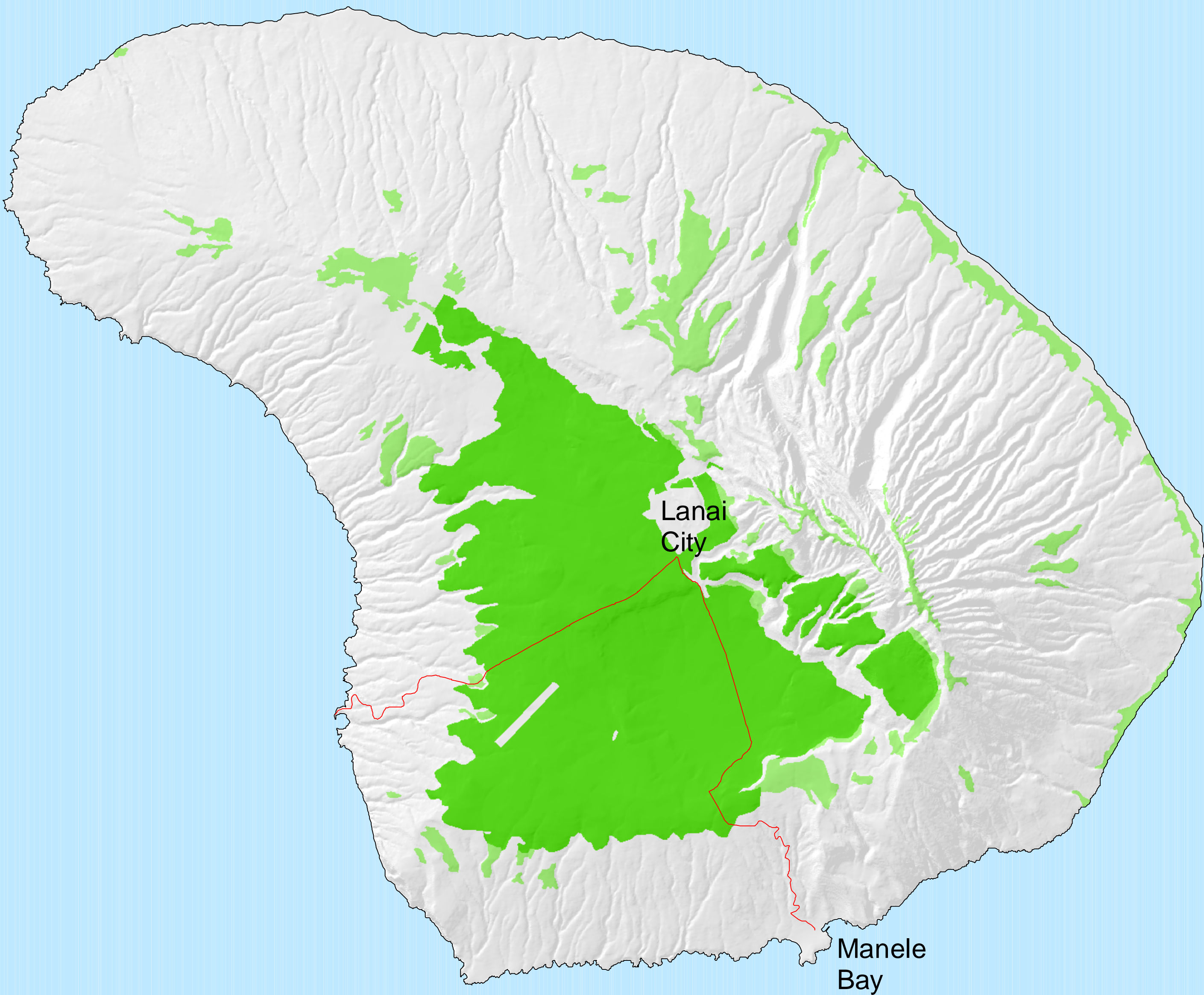


Islands of Molokai and Lanai

ALISH

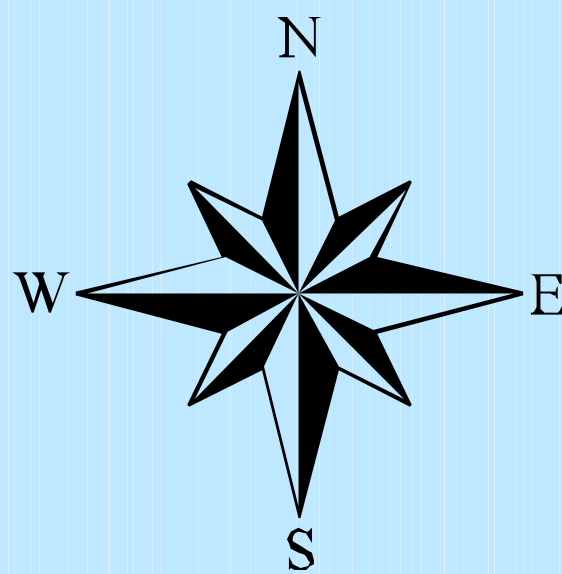
- Prime
- Unique
- Other
- Major Roads

Lanai



This map was produced by the Office of Planning (OP) for planning purposes. It should not be used for boundary interpretations or other spatial analysis beyond the limitations of the data. Information regarding compilation dates and accuracy of the data presented can be obtained from OP.

Sources:
ALISH (Agricultural Lands of Importance to the State of Hawaii) - State Dept. of Agriculture, 1977.
Major Roads - USGS, 1983.



0 2.5 5 10 Miles