



Red Hill Tank Closure Plan Timeline and Status

- **Navy responsible for executing the Red Hill Tank Closure Plan (01 Nov 2022)**
 - Iterative plan outlining four options: Close in place / Close in place for potential beneficial non-fuel reuse / Close and fill / Close, remove the steel liner, and fill
- **Navy formally request DOH approval for Closure in Place (~ 3 years)**
 - Most limited impact to the environment and surrounding community; safest
 - Other options difficult due to Red Hill's size
- **Four (4) Phases of the Red Hill Tank Closure Plan**
- **Supplement 1 (28 Feb 2023):** Focus on cleaning to include HAZMAT management and Spill Plan
- **Supplement 2 (31 May 2023):** Provides amplifying information on Closure in Place to include pipeline removal, Structural Analysis, & responses to EPA comments
- **Next Steps:** Aligning future Supplements to each major milestone



RED HILL TANK CLOSURE

The DON will be regularly releasing information as the timeline progresses via the following:

- Press Releases
- Website Updates
- Virtual/Online Updates
- Neighborhood Boards



PLANNING FOR PERMANENT TANK CLOSURE

- Submit Red Hill Tank Closure Plan to Hawaii Department of Health (DOH) and the Environmental Protection Agency (EPA).
- DOH & EPA concurrence on permanent tank closure methods and procedures.



PLANNING FOR BENEFICIAL NON-FUEL REUSE OF TANKS

- Collaborate with DOH, EPA, local leaders, and general public.
- Identify, evaluate, and discuss beneficial non-fuel reuse options.



PREPARATION FOR TANK CLOSURE

- Begin closure process upon completion of defueling.
- Ventilate the 20 underground storage tanks to allow worker access.
- Complete repairs required for safe closure.
- DOH concurrence on repair completion and spill prevention.



IMPLEMENTATION OF PERMANENT TANK CLOSURE

- Clean the 20 underground storage tanks, surge tanks, and remove the associated pipelines.
- Address tank security, electrical power, and access for long term maintenance and environmental monitoring.
- Render the tanks unusable for fuel storage.



SITE ASSESSMENT, RELEASE INVESTIGATION & RESPONSE

Concurrent throughout phases 1 - 4.

- Perform site assessment as part of permanent closure.
- Continue to investigate and remediate impacted groundwater.

DEFUELING

Concurrent planning and preparation to defueling effort.

- Contingent on final defueling completion.

For more information, please see Navy's public website for Red Hill



COMMANDER,
NAVY REGION
HAWAII (CNRH)

FIND US ONLINE

SCAN OUR QR CODE for more information on the Red Hill Bulk Fuel Storage Facility.



CONTACT US

EMAIL
CNRH.PA0@US.NAVY.MIL

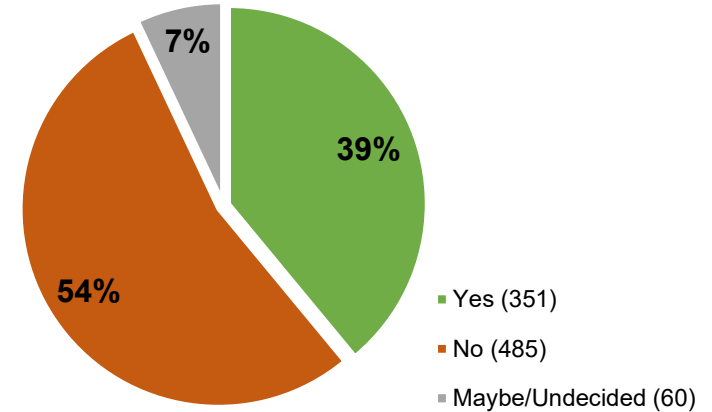




Beneficial Non-Fuel Repurposing Outreach Efforts

- **One-on-One Interviews with 30 key stakeholders from 3 Apr - 31 May 2023**
- **Online Survey to Oahu Residents from 31 Mar – 31 May 2023; 800+ completed**
- **Mail Out and Online Survey from Jul - Sep 2023**
- **Other outreach efforts ongoing**





Are you in favor of the Red Hill Facility being Repurposed?



(n) # of responses from completed surveys that answered this question



What ideas if any would you suggest for repurposing the facility after it is closed?

- 1 
- 2 
- 3 
- 4 

Do you have a preference for either of the four categories?



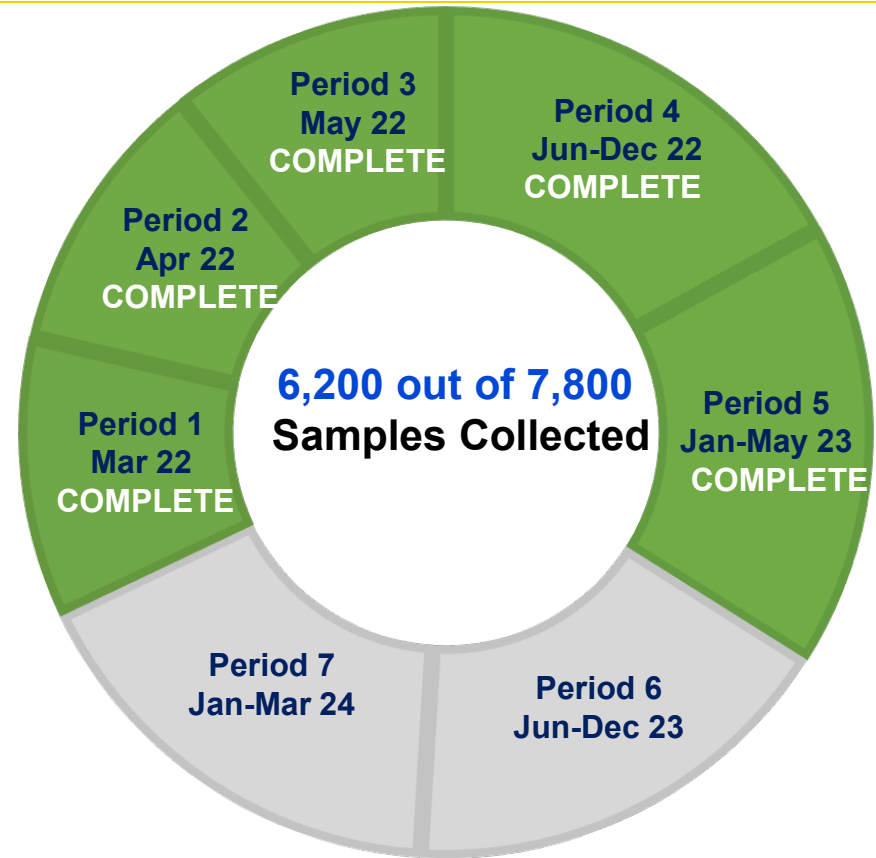
JBPHH Water Distribution System Long-Term Monitoring

Priority locations Sampled Each Period:

- Schools
- Childcare centers/homes
- Medical/Dental Offices
- Distribution System

Drinking Water Distribution Sampling:

- Ongoing sampling until Mar 2024
- 65%+ of homes and non-residential buildings sampled
- Zero detections of JP5



The **Rapid Response team** is available to perform a house flush and test for TPH if residents have concerns. Residents may contact the Water Response Team at (808) 920-3616.

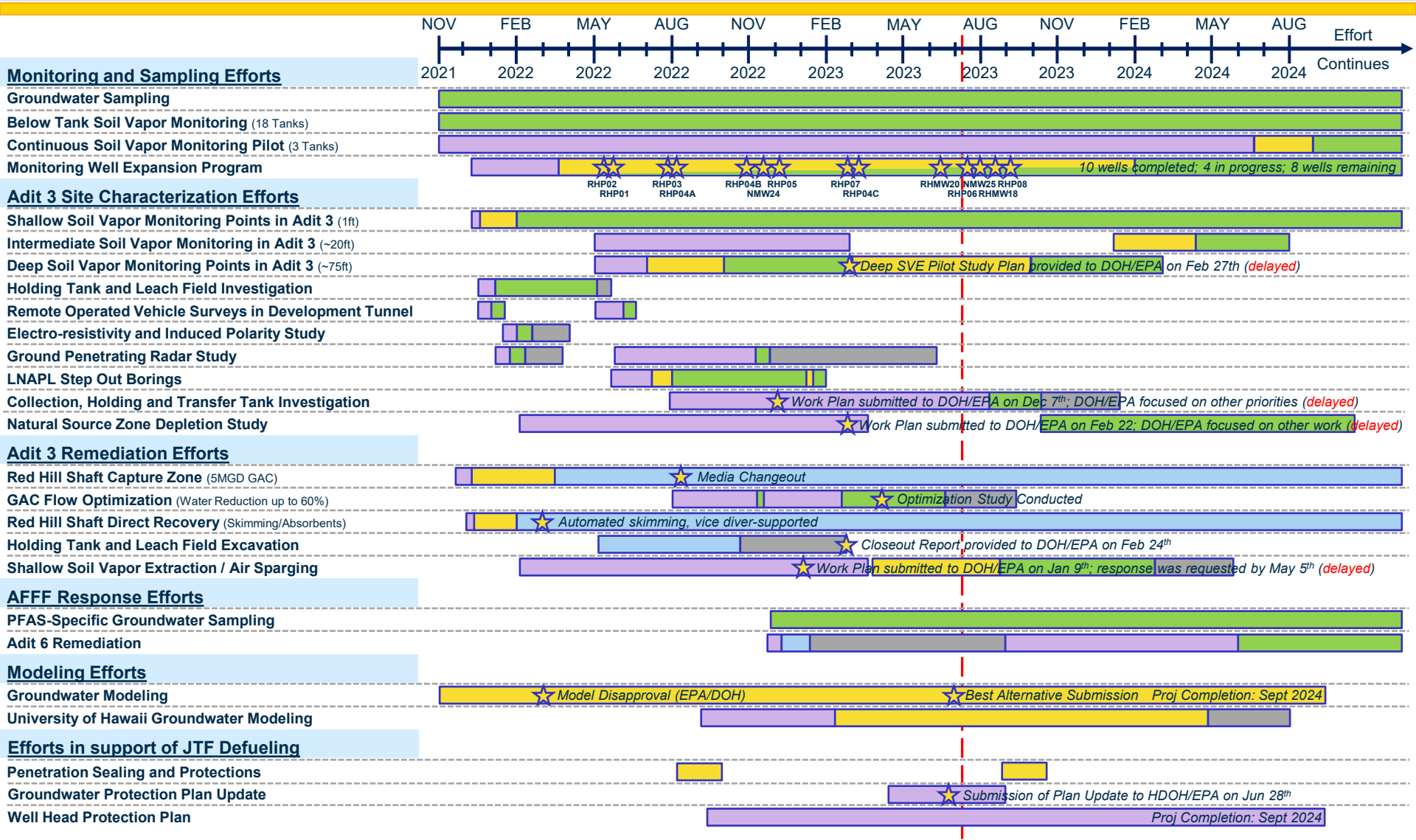


Red Hill Remediation Actions Schedule

- Planning Phase
- Installation Phase
- Monitoring Phase
- Remediation Phase
- Closeout / Report Phase



As of 0900, 11 JUL



Commander Navy Region Hawaii

** Subject to change – dependent on predecessor activity progress, environmental permitting, real estate agreements and negotiations, resource availabilities, and prior activity data interpretation.