

Red Hill Registry

Tara Sutton, Director of Community Engagement

August 20, 2024

Commission on Water Resource Management (CWRM)



UNIVERSITY of HAWAII[®]
SYSTEM



Thank you!





Over the years, a third-party registry has been called for by...

- Congress
- CDC ATSDR
- Hawaii State DOH
- Defense Health Agency

News • In The News

07.23.2023

Congress members seek registry to track health effects of Red Hill

[Military News](#)

Red Hill Registry Being Planned to Study Long-Term Health Effects of Tainted Water on Hawaii Military Community

UH NEWS

Press Release June 20, 2024

UH awarded grant to establish Red Hill Independent Health Registry



UNIVERSITY of HAWAII[™]
SYSTEM



UNIVERSITY of HAWAII[™]
SYSTEM

News release headline:

UH awarded grant to establish Red Hill Independent Health Registry

UH News story headline:

Red Hill health registry to support individuals exposed to fuel

The University of Hawai'i is creating a health registry to provide support and resources for anyone directly impacted by the Red Hill water crisis. The Red Hill Independent Health Registry (Red Hill Registry) is a UH Office of Strategic Health Initiatives project funded by a five-year, \$27.2-million federal grant.

"The Red Hill Registry will be a tremendous step forward in serving the tens of thousands of individuals who were exposed or placed at risk of exposure to fuel releases from the Red Hill storage facility," said UH President David Lassner. "The selection of UH to lead this major initiative is a testament to our expertise across multiple disciplines, our scientific independence, and our proven, widely understood ability to execute large complex programs that serve the people of Hawai'i."

The opt-in, third-party registry will be co-developed with the community to provide connections to services and educational programs, while tracking participants' health status and gathering information on how fuel exposures may impact health. In its first year, the project will also include a Congressionally mandated feasibility assessment for an epidemiological outcomes study to further advance the understanding of the long-term health effects related to the Red Hill fuel spill.

Stay informed

In the coming months, the registry team will host community listening sessions and establish a community oversight working group to ensure that community voices are included at every step of the process. To support these efforts, the team will also seek to hire local community members, including individuals directly affected by the crisis, to support outreach, enrollment and referral services. A formal online registration portal for the registry is anticipated to launch in fall 2025. For now, individuals who are interested in receiving updates on the registry's development and community engagement efforts are encouraged to [sign up at this website](#).

"The health and social-emotional implications of the Red Hill water crisis on individuals and families, in addition to the environmental impacts, are critically important," said Aimee Grace, principal investigator and director of the UH Office of Strategic Health Initiatives. "We see this registry as providing an important opportunity for individuals and families to share their stories and be linked to services, and be able to monitor their health over time."

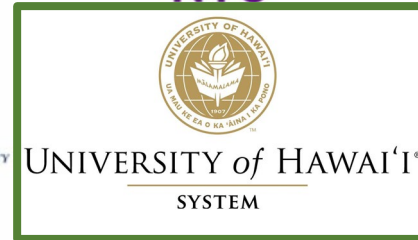
Funding was provided through the National Center for Disaster Medicine and Public Health at the Uniformed Services University of the Health Sciences. The registry was recommended and will be supported by the Hawai'i State Department of Health, the Agency for Toxic Substances and Disease Registry at the Centers for Disease Control and Prevention, and the Defense Health Agency. Participating units across UH include the [Thompson School of Social Work and Public Health](#), [John A. Burns School of Medicine](#), [Water Resources Research Center](#) and [University Health Partners of Hawai'i](#).

USU National Center for Disaster Medicine and Public Health

Yale



MITRE



Current members of the Joint
Disaster Medicine and Public
Health Ecosystem



Year One: Planning Year

- **Registry Infrastructure:** Hiring, website, and IT setup
- **Community Engagement:** Co-create the Registry w/community
- **Feasibility Assessment:** NDAA 2024 requirement





1. Registry Infrastructure



Red Hill Registry Team

Dr. Aimee Grace

Director of the Office of Strategic Health Initiatives
Principal Investigator for the Red Hill Registry



Tara Sutton

Director of Community Engagement



Dr. Sanie Weldon

Environmental Health Scientist
Red Hill Registry Director



Office of
Strategic Health Initiatives
UNIVERSITY OF HAWAII SYSTEM



Dr. Lee Buenconsejo-Lum

Former Interim JABSOM Dean and
Director of Medical Advising



Kaeo Tam

Director of Data and Data Systems &
HIPAA Security Officer



UNIVERSITY of HAWAII at MĀNOA
THOMPSON SCHOOL
SOCIAL WORK & PUBLIC HEALTH

Catherine Pirkle, PhD

Director of Science & Research



Tetine Sentell, PhD

Scientific Network Lead



Jonathan Huang, PhD

Faculty Support
Science & Research



Yanyan Wu, PhD

Faculty Support
Science & Research

Aurora Kagawa-Viviani, PhD

Faculty Support, Science & Research



Donn Viviani, PhD

LCC Faculty Support, Science & Research



Catherine Rong

Analytical Chemist

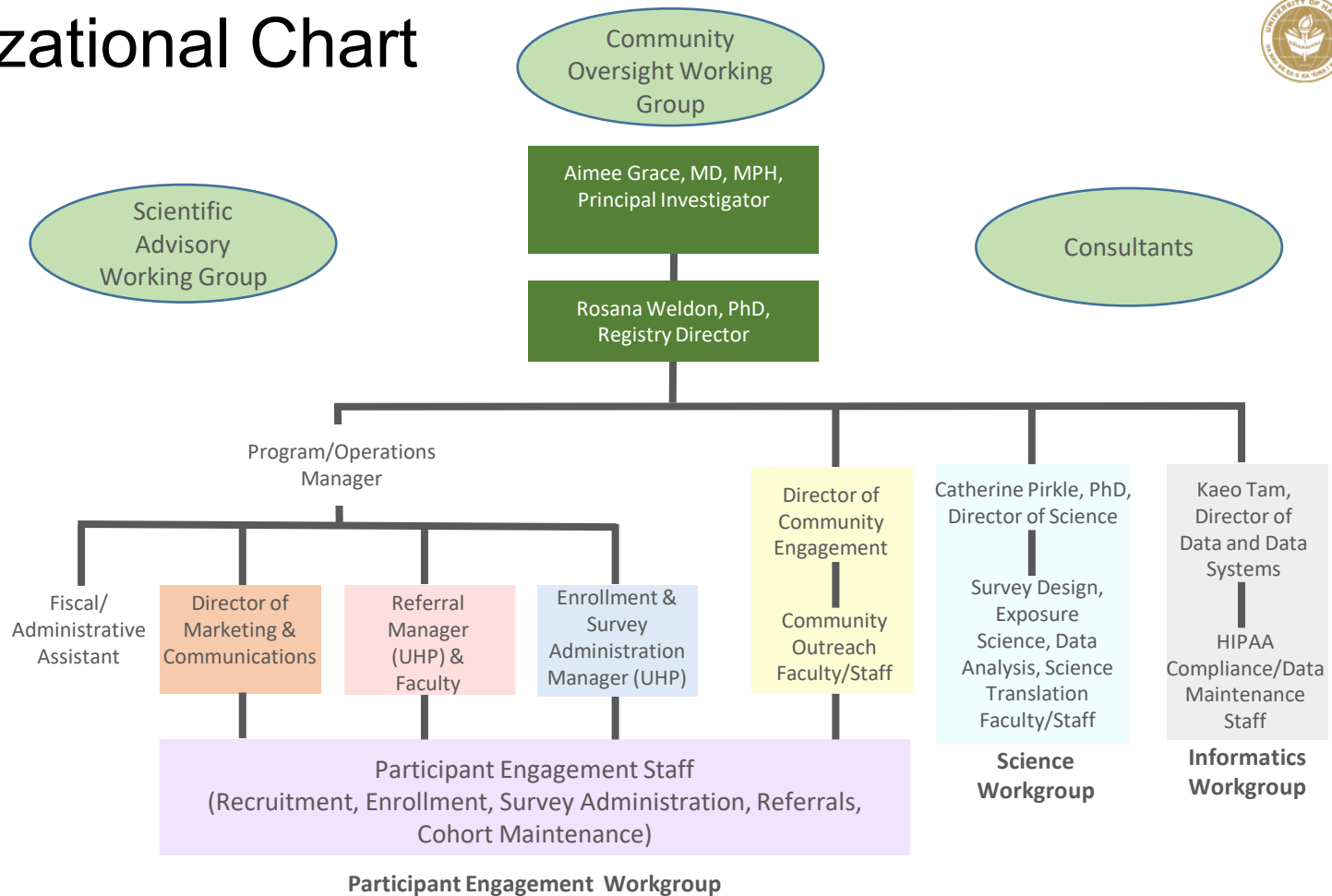


Mia Comeros

Pacific Water Resilience &
Security Program Lead



Organizational Chart





2. Community Engagement





Community Engagement

- Connecting with the community
- Hosting listening sessions to gain insight from
 - Impacted water users (those with military affiliation and civilian)
 - Health care professionals
 - Community leaders with various kinds of expertise in the Red Hill infrastructure and water crisis
- Establishing Community Oversight Workshops





3. Feasibility Assessment



Feasibility Assessment Requirements



- Due to USUHS by September 2024.
- The Secretary of Defense will report to Congress by December 2024.



NDAA - Page 1582

<https://www.congress.gov/118/bills/2226/BILLS-118s2226es.pdf>

1. A **strategy to recruit impacted individuals**
2. A **description of protocols and methodologies** to assess health outcomes from the Red Hill Incident,
3. Develop a strategy around the **frequency for data collection** which accounts for the various kinds of access to health care the affected individuals face
4. Exploration of **methods to analyze data** to determine possible connections between exposure to contaminated water and adverse health
5. Discuss an **identification of exposures** resulting from the Red Hill Incident that may qualify individuals to be eligible for participation in the study or studies
6. Identify a plan to inform individuals impacted by the Red Hill Incident with **information on available resources and services**
7. (G) a final **determination on whether it is feasible to conduct an epidemiological health outcomes study.**

Website: <https://www.RedHillRegistry.org>


The University of Hawai'i is committed to working with the impacted community to co-develop the Red Hill Registry.
Stay informed throughout the Red Hill Registry development.
Subscribe here to receive updates on our progress and community efforts.

Fields marked with an * are required

Email *

 Agree to terms and conditions *
By submitting this form you confirm that you are over the age of 13 in the US (or 16 if you are located in the European Economic Area) and consent to the use of your personal information as detailed in our [Privacy Policy](#).

Submit



Questions? Comments?

Email: Tara Sutton

tsutton@RedHillRegistry.org





UNIVERSITY
of HAWAII®
SYSTEM

Thank you!

**On behalf of the Red Hill Registry,
We want to acknowledge the Red Hill
Community and People of Hawai'i who
recognized a problem and fought for answers!!**

Questions? Comments?

Email Tara Sutton: tsutton@redhillregistry.org

