

Red Hill Update CWRM



28 JANUARY 2025



Apple



Android



Agenda

SAFE. DELIBERATE. ENGAGED. COMMITTED.

- Drinking Water
 - Drinking water monitoring program
 - LTM and EDWM analytes
- Groundwater
 - Groundwater monitoring
 - Groundwater monitoring well network
 - Navy groundwater flow model
- Ensuring Water for the Long Term
- Safe Waters website
- Additional information



Drinking Water



JOINT BASE PEARL HARBOR-HICKAM DRINKING WATER MONITORING PROGRAM ENSURING SAFE AND COMPLIANT DRINKING WATER



Emergency Response

Nov. 2021 - Dec. 2021



A Red Hill watchstander inadvertently strikes a drain valve, spilling fuel which contaminated the JBPHH drinking water well and distribution system. Hawaii Department of Health issued a health advisory on Nov. 29, 2021.



Interagency Drinking Water System Team

Dec. 2021 - Mar. 2022



A team of experts from the Hawaii Department of Health (DOH), Environmental Protection Agency (EPA), Navy and Army was formed to develop requirements to restore the JBPHH drinking water system.



JBPHH Drinking Water System Flushing

Dec. 2021 - Mar. 2022



Between Dec. 2021 to Mar. 2022, the Navy conducted a complete flush of the JBPHH drinking water distribution system to include all facilities and residences on the system in compliance with the IDWST approved Drinking Water Distribution System Recovery Plan. DOH lifts health advisory in Mar. 2022.



Drinking Water Long Term Monitoring

Mar. 2022 - Mar. 2024



From Mar. 2022 to Mar. 2024, Navy implemented a two-year period of LTM of the JBPHH drinking water system. Navy collected over 9,000 samples testing for over 50 analytes to include metals, hydrocarbons, Synthetic Organic Compounds, and Volatile Organic Compounds to ensure the water is safe.



Extended Drinking Water Monitoring

Apr. 2024 - Present



In Apr. 2024, Navy **voluntarily** implemented EDWM ensuring the JBPHH drinking water system remains safe for consumption and meets all state and federal drinking water standards. Navy has collected over 3,500 samples testing for over 50 analytes.



SAFE DRINKING WATER ACT COMPLIANCE MONITORING

NCTF SAFE DELIBERATE
RH ENGAGED COMMITTED

FIND US ONLINE

<https://www.navyclosuretaskforce.navy.mil/>



SCAN THE QR CODE for the NCTF-RH app available through the Apple Store or Google Play

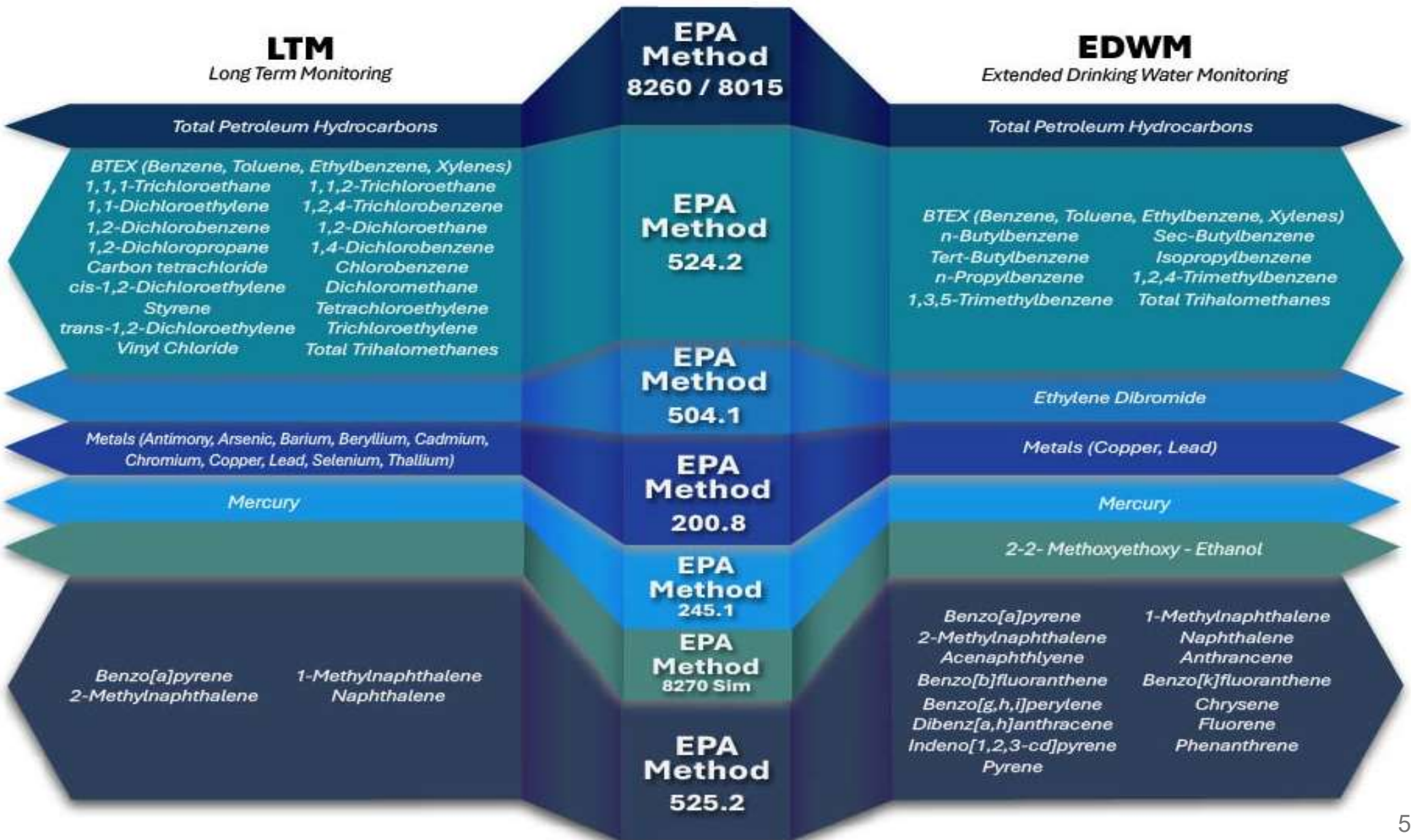
CONTACT US

EMAIL
NCTF_PAO@US.NAVY.MIL



LTM and EDWM Analytes

SAFE. DELIBERATE. ENGAGED. COMMITTED.



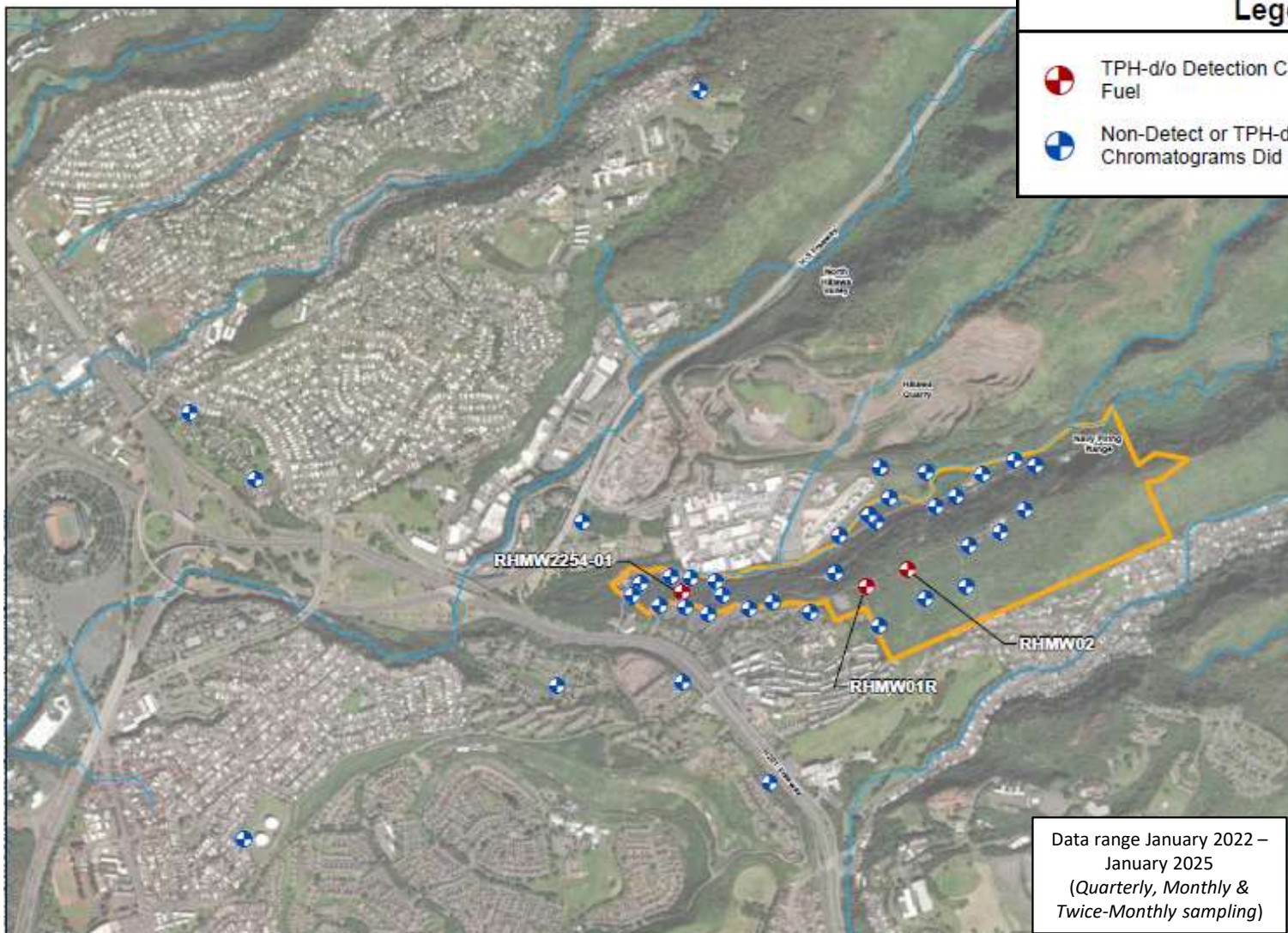


Groundwater



Groundwater Monitoring

SAFE. DELIBERATE. ENGAGED. COMMITTED.

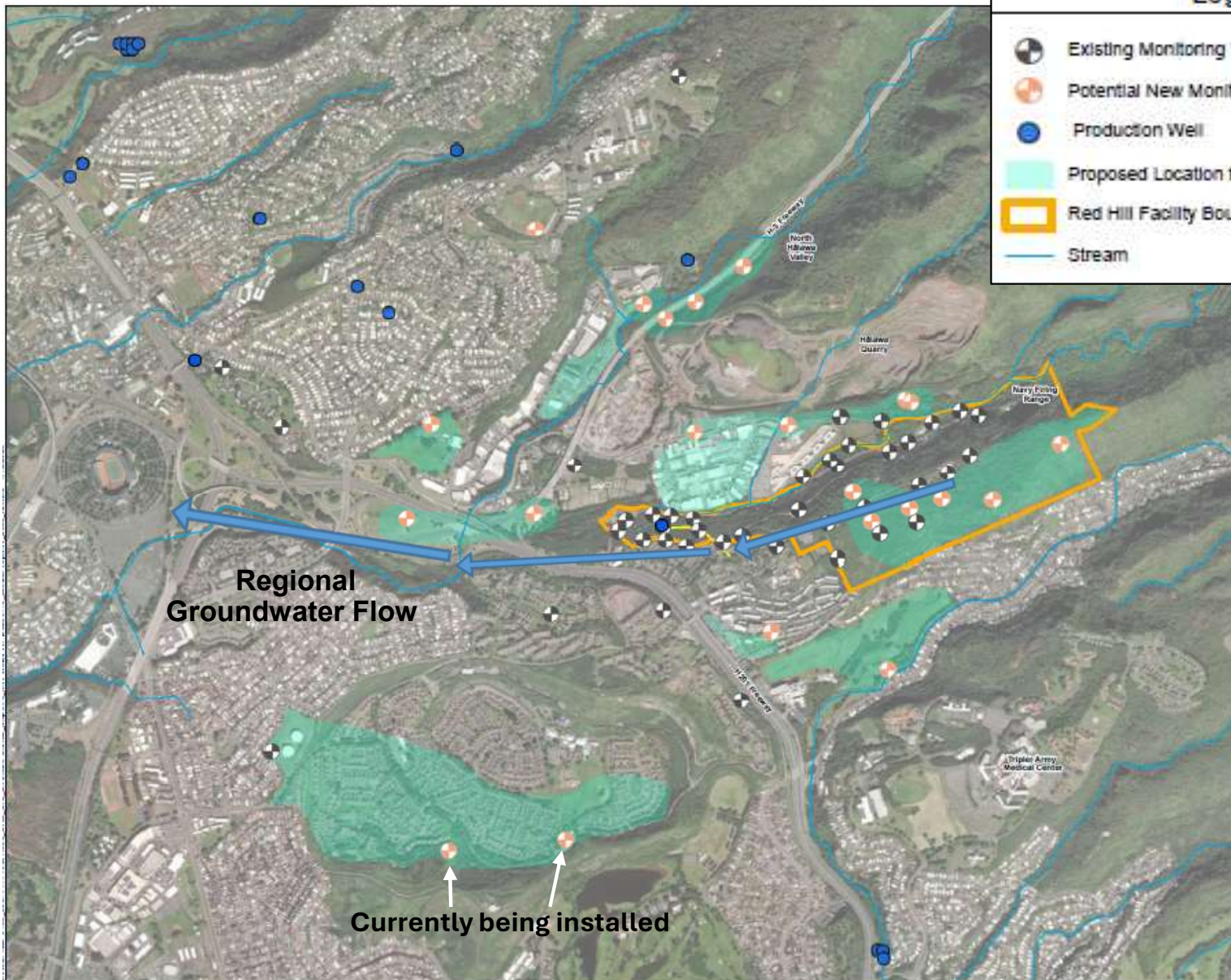


Monitoring data collected shows no evidence of fuel migration beyond Red Hill facility boundary



Groundwater Monitoring Well Network: Current & Potential Future Sites

SAFE. DELIBERATE. ENGAGED. COMMITTED.





Navy Groundwater Flow Model

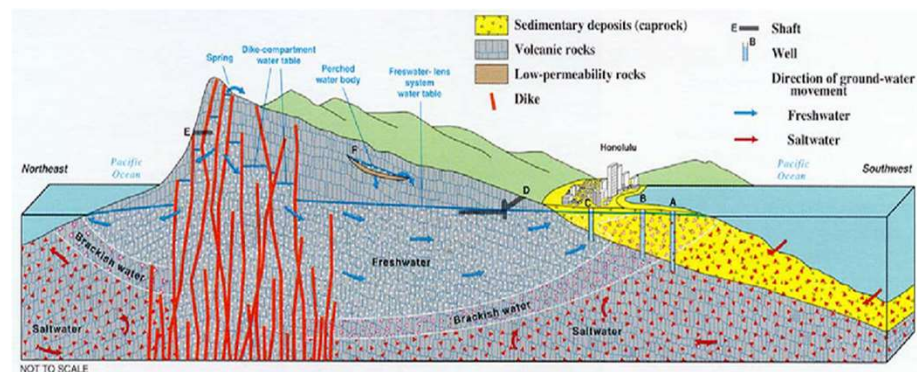
SAFE. DELIBERATE. ENGAGED. COMMITTED.

Navy Groundwater Model:

- Provides advance understanding of subsurface conditions
- Informs environmental remediation
- Assesses potential fuel release migration

Composite Model:

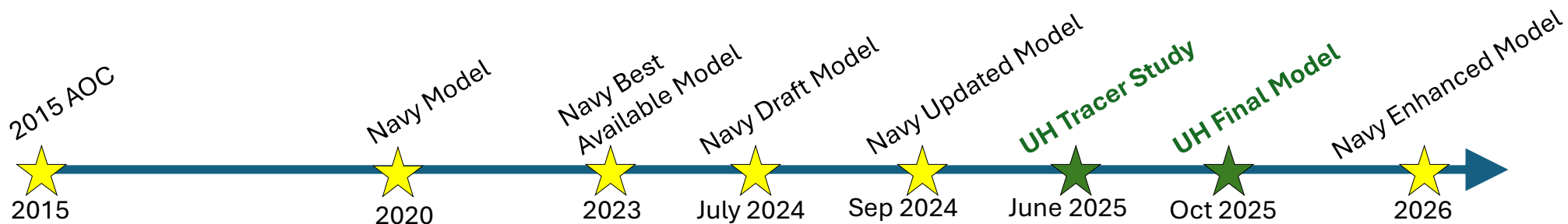
- **Geological Conceptual Site Model**
 - Estimation of the geologic material distribution
- **Groundwater Flow Model**
 - Estimates flow direction and flow rates of groundwater
- **Vadose Zone Model**
 - Studies processes that occur in the geology between the land surface and groundwater table
- **Contaminant Fate and Transport Model**
 - Estimates migration pathways of contaminants
 - Estimates how natural processes affect concentrations



Conceptual Hydrogeology of Oahu

Iterative Approach:

Informed by data, studies and feedback





SAFE. DELIBERATE. ENGAGED. COMMITTED.

Ensuring Water for the Long Term

Pathway to **Resiliency, Redundancy, and Security** for the JBPHH Drinking Water System

- Infrastructure Improvements
- Shaft Reactivations
- Treatment Systems
- Cybersecurity Improvements
- Leak Detection Programs
- Watershed Projects



**Joint effort between NCTF-RH, JBPHH, NAVFAC,
Navy Region Hawaii and community partners**

Safe Waters Website

www.JBPHH-SafeWaters.org

SAFE. DELIBERATE. ENGAGED. COMMITTED.



Residents can **SEARCH** for drinking water monitoring **RESULTS** in the interactive map

Joint Base Pearl Harbor-Hickam (JBPHH) Drinking Water Monitoring Dashboard

Location Sample to Zone	Location	Total Samples	Analytes Tested
Zone 1	2454	4522	148.8K

Information Source for both drinking water and environmental remediation projects

Welcome to the JBPHH Safe Waters website has been created to provide ongoing info the Navy's efforts regarding water on the island. These efforts are divided into two primary areas: Drinking Water Monitoring and Red Hill Environmental Remediation. Choose from the options below for detailed information on each of these efforts.

→ Drinking Water Monitoring

→ Red Hill Environmental Remediation

Ground water monitoring **RESULTS** interactive map

Joint Base Pearl Harbor-Hickam (JBPHH) - Groundwater Monitoring Dashboard

Location ID	Sampling Date	Analyte Name	Validated Results	Screening Level	Units	Results
...	...	1-Methylphthalates	ND	10	PPB	Not Detected

Halsey Terrace Flushing Zone F2

Extended Drinking Water Monitoring

Quarter 1 - Samples Collected April through June of 2024

Quarter 2 - Samples Collected July through September of 2024

Quarter 3 - Samples Collected October through December of 2024

Quarter 4 - Samples Collected January through March of 2025

Click here for information on the Drinking Water Monitoring program.

- View Drinking Water Monitoring Site
- Community Outreach Events

Related Links:

- Navy Closure Task Force - Red Hill (NCTF-RH)
- Navy JBPHH Water Quality Compliance Information

Click here for information on the Red Hill Environmental Remediation program.

- View Red Hill Environmental Remediation Site

LINK to JBPHH Drinking Water Compliance Reports

All drinking water **REPORTING** for zones and neighborhoods: **LAB REPORTS**, emergency response **RECORDS**, and **SHAFT SAMPLING**

Welcome to the JBPHH Community Outreach information page. Here you can find a list of the Navy's outreach events regarding the Drinking Water Long Term Monitoring Plan. These events are held to provide the community with the latest information regarding the plan and how to find and understand drinking water sample results.

14 January, Tuesday, 9 a.m. - 1:00 p.m.
JBPHH Newsroom Fac. Hickam Chapel

14 January, Tuesday, 5 p.m. - 6:30 p.m.
Onusudman & Key Spouse Assembly, Hickam Chapel

Media Library with **WEBINARS**, **RECORDED MEETINGS**, and **COMMUNITY EVENTS** schedule

Information about all remediation projects including **DATA**, **PLANS**, and **UPDATES**



Additional Information

SAFE. DELIBERATE. ENGAGED. COMMITTED.



Joint Base Pearl Harbor-Hickam Safe Waters

jbphh-safewaters.org

- Ongoing information on Navy efforts regarding water on the island of Oahu
- Two primary areas: Drinking Water System & Red Hill Environmental Remediation



Navy Closure Task Force – Red Hill

navyclosuretaskforce.navy.mil

- Document library for defueling & closure of Red Hill Bulk Fuel Storage Facility
- Photos & media gallery related to water response efforts & drinking water testing
- Upcoming public engagements



Apple



Android

Download the free NCTF-RH app

- Interactive progress dashboard
- Latest news
- Photos & videos
- Weekly podcast episodes
- Presentations & fact sheets

