

Ongoing CWRM Projects and Near-Term Organizational Priorities

March 24, 2026

Commission on Water Resource Management

Deputy Director Ciara Kahahane



Purpose of Briefing

- Informational briefing on current work program
- Overview of organizational capacity and constraints
- Explain basis for sequencing and prioritization of work



Staff Capacity

Statewide, there are:

- 376 perennial streams
- 110 aquifer system areas
- ≈1,300 stream diversions
- ≈5,500 groundwater wells

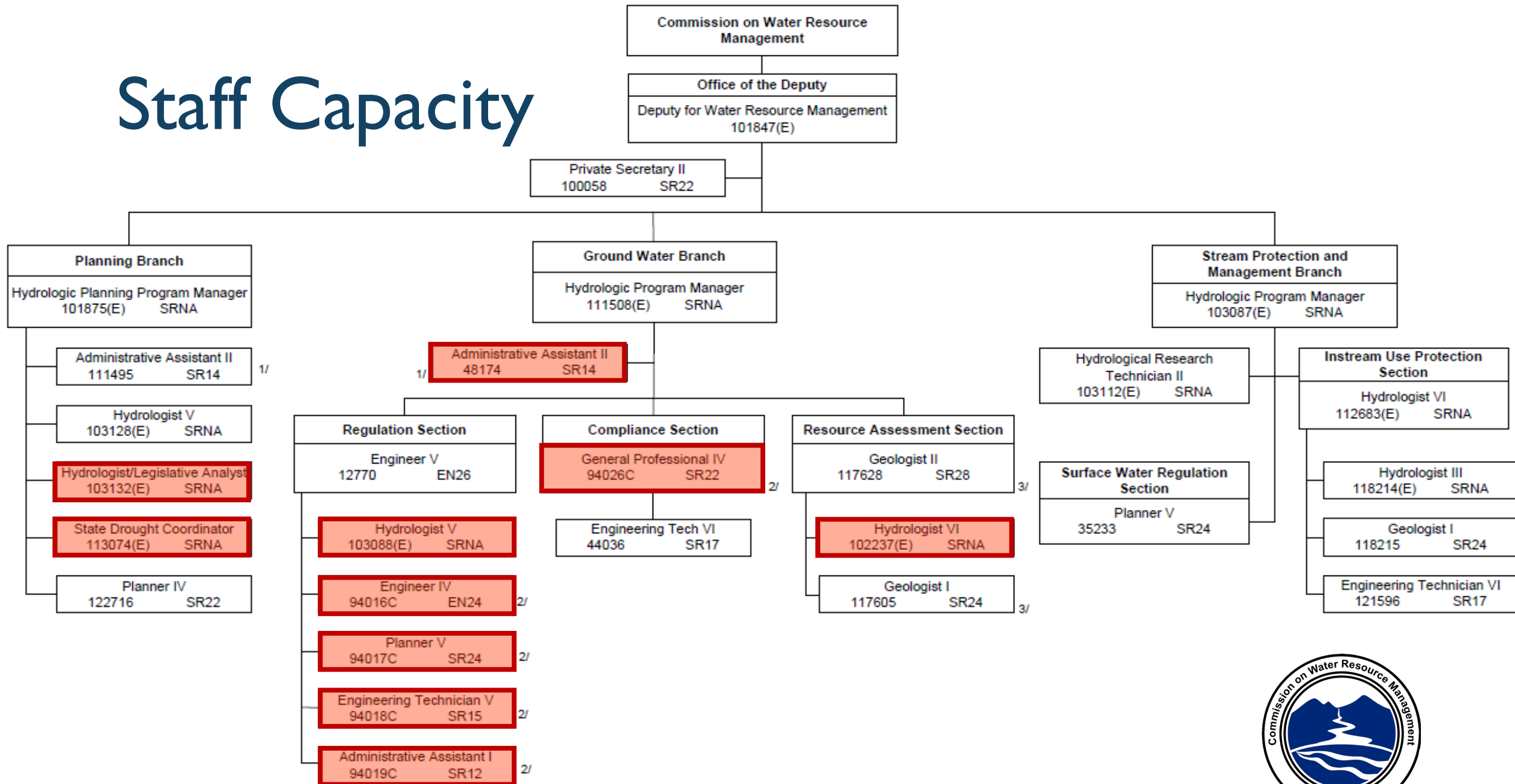
Implementation is currently carried out by 18 filled staff positions.

FY26 operating budget: \$5.7M

Base budget ≈ \$4.5M



Staff Capacity



Non-Discretionary Operational Work

- Ongoing monitoring and data programs (surface and ground)
- Preparation and follow-up for Commission meetings
- Budget, contracting, and expenditure tracking
- Permitting with public health/safety implications
- Public records requests (UIPA, well information requests)
- Compliance, enforcement, investigating complaints, and monitoring existing orders
- Legislative testimony, tracking, attendance and meetings with legislators
- Interagency working groups, task forces, and board service
- Interagency/intergovernmental coordination



Near-Term Focus Areas

- Lahaina water management area permitting and shortage planning
- Keauhou AMP
- Nā Wai 'Ehā remand
- Documenting and improving existing staff processes
- Hawai'i Water Plan Framework update
- Developing and evaluating instream flow standards, statewide
- Limited community outreach, engagement, and education
- Processing permit applications
- East Maui IFS implementation



Longer-Term Focus Areas

- Additional groundwater management area designations (e.g., Wai'anae)
- Administrative rule updates
- East Maui DHHL reservations
- Expanded enforcement and compliance monitoring
- Mediation for water disputes
- Improved and expanded communications, public information, and digital presence
- 20-year permit review
- Sustainable yield updates, statewide

