



STATE OF HAWAII
DEPARTMENT OF TRANSPORTATION
869 PUNCHBOWL STREET
HONOLULU, HAWAII 96813-5097

Board of Land and
Natural Resources
State of Hawaii
Honolulu, Hawaii

ISSUANCE OF A REVOCABLE PERMIT FOR PARKING
FOR AIRCRAFT TIE-DOWN PARKING PURPOSES
AERIAL BANNERS, INC.
KALAELOA AIRPORT, ISLAND OF OAHU, STATE OF HAWAII
TAX MAP KEY: (1) 9-1-13: PORTION OF 32

OAHU

REQUEST:

Issuance of a Revocable Permit for Parking (parking permit) to Aerial Banners, Inc. at
Kalaeloa Airport.

LEGAL REFERENCE:

Section 171-55, Hawaii Revised Statutes

APPLICANT:

Aerial Banners, Inc., a foreign profit corporation registered to do business in the State of
Hawaii, whose mailing address is 601 SW 77TH Way, Pembroke Pines,
Florida 33023-2591.

LOCATION AND TAX MAP KEY:

Portion of Kalaeloa Airport, Kapolei, Island of Oahu, State of Hawaii, identified by
Tax Map Key: 1st Division, 9-1-13: Portion of 32

AREA:

Area/Space No. 405-114, containing an area of approximately 849 square feet,
as shown and delineated on the attached map labeled Exhibit A.

BLNR – ISSUANCE OF A REVOCABLE PERMIT FOR PARKING
AERIAL BANNERS, INC.
Page 2

ZONING:

State Land Use District: Urban
City and County of Honolulu: P-2 (To be rezoned in the future)

LAND TITLE STATUS:

Non-ceded land acquired from the U.S. Government by the State of Hawaii after Statehood
DHHL 30% entitlement lands pursuant to the Hawaii State Constitution: YES NO

CURRENT USE STATUS:

Land presently encumbered by Governor's Executive Order No. 3861, setting aside
Kalaeloa Airport under the control and management of the Department of Transportation,
Airports Division, State of Hawaii, for Airport Purposes.

CHARACTER OF USE:

Aircraft Tie-down

COMMENCEMENT DATE:

Upon execution of the parking permit

MONTHLY RENTAL:

\$24.00

SECURITY DEPOSIT:

\$72.00

DCCA VERIFICATION:

Not Applicable

CHAPTER 343, HRS - ENVIRONMENTAL ASSESSMENT:

Pursuant to Section 11-200-8(a), Environmental Impact Statement Rules of the
Department of Health, State of Hawaii, this disposition is exempt from requirements
regarding preparation of an environmental assessment, negative declaration, or

**BLNR – ISSUANCE OF A REVOCABLE PERMIT FOR PARKING
AERIAL BANNERS, INC.**

Page 3

environmental impact statement as required by Chapter 343, Hawaii Revised Statutes, as amended, relating to Environmental Impact Statements, because the proposed action falls within Exemption Class #1, Comprehensive Exemption List for the State of Hawaii, Department of Transportation, dated November 15, 2000, as approved by the Environmental Quality Council. Exemption Class #1 covers operations, repairs, or maintenance of existing structures, facilities, equipment, or topographical features involving negligible or no expansion or change of use beyond that previously existing.

REMARKS:

In accordance with Section 171-55, HRS, relating to Permits, the Department of Transportation has no objections to the issuance of a month-to-month parking permit to Aerial Banners, Inc. at Kalaeloa Airport.

RECOMMENDATION:

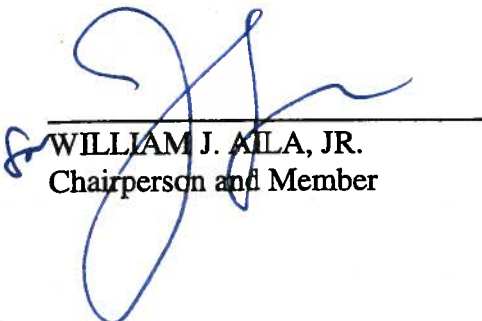
That the Board authorize the Department of Transportation to issue a month-to-month parking permit to Aerial Banners, Inc., subject to: (1) terms and conditions herein outlined, which are by reference incorporated herein; (2) such additional terms and conditions as may be prescribed by the Director of Transportation to best serve the interests of the State.

Respectfully submitted,

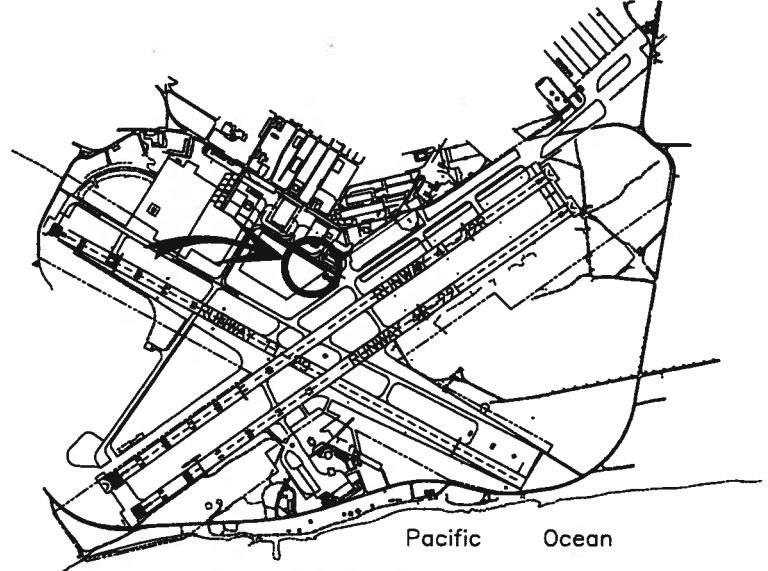


FORD N. FUCHIGAMI
Interim Director of Transportation

APPROVED FOR SUBMITTAL:



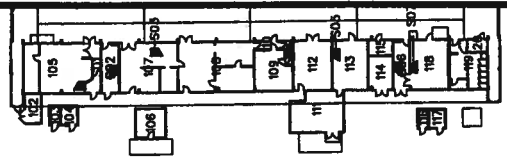
WILLIAM J. AILA, JR.
Chairperson and Member



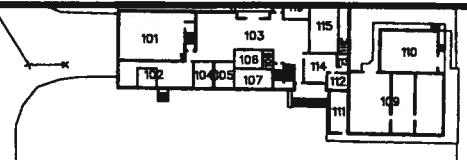
Pacific Ocean

LOCATION PLAN

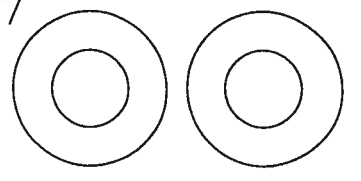
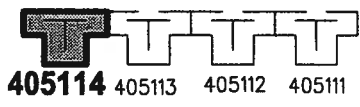
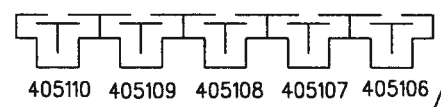
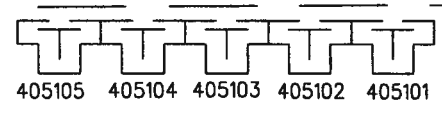
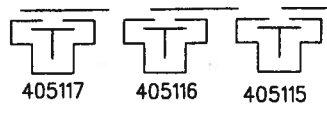
3000:1



HANGAR
110



BLDG 104
ATCT



SCALE: 1" = 100'

AREA/SPACE	SQ. FT.
405 114	849

PP-14-0012

DATE : OCTOBER 2014

EXHIBIT: **A**



Airports Division

AERIAL BANNERS, INC.

TIE-DOWN AREA

405114