

DAVID Y. IGE
GOVERNOR



STATE OF HAWAII
DEPARTMENT OF TRANSPORTATION
869 PUNCHBOWL STREET
HONOLULU, HAWAII 96813-5097

FORD N. FUCHIGAMI
DIRECTOR

Deputy Directors
JADE T. BUTAY
EDWIN H. SNIFFEN
ROSS M. HIGASHI

IN REPLY REFER TO:

Board of Land and
Natural Resources
State of Hawaii
Honolulu, Hawaii

ISSUANCE OF A REVOCABLE PERMIT FOR VEHICLE PARKING
ABLE FREIGHT SERVICES, INC.
KONA INTERNATIONAL AIRPORT AT KEAHOLE
TAX MAP KEY: (3) 2-1-12: PORTION OF 90

HAWAII

REQUEST:

Issuance of a revocable permit for vehicle parking (parking permit) to Able Freight Services, Inc. at Kona International Airport at Keahole.

LEGAL REFERENCE:

Sections 171-11 and 171-55, Hawaii Revised Statutes

APPLICANT:

Able Freight Services, Inc. (AFS) whose business address is 5340 West 104th Street, Los Angeles, CA. 90045

LOCATION AND TAX MAP KEY:

Portion of Kona International Airport at Keahole (KOA), Kona, Island of Hawaii, identified by Tax Map Key: 3rd division, 2-1-12: Portion of 90

AREA:

Area/Space Nos. 610-154D, -154E & -154F, containing an area of approximately 270 square feet each as shown on the attached Exhibit "A"

ZONING:

State Land Use District:
County of Hawaii:

Urban
Industrial (ML-20)

ITEM M-11

BLNR – ISSUANCE OF A REVOCABLE PERMIT FOR VEHICLE PARKING
ABLE FREIGHT SERVICES, INC.

Page 2

LAND TITLE STATUS:

Section 5(a) lands of the Hawaii Admission Act: Non-Ceded
DHHL 30% entitlement lands pursuant to Hawaii Admission Act YES ___ NO X

CURRENT USE STATUS:

Airport and aeronautical purposes

CHARACTER OF USE:

Vehicle parking stalls

COMMENCEMENT DATE:

Upon complete execution of the parking permit

MONTHLY RENTAL:

\$156.00

SECURITY DEPOSIT:

\$468.00

DCCA VERIFICATION:

Place of business registration confirmed: YES
Registered business name confirmed: YES
Good standing confirmed: YES

CHAPTER 343, HRS - ENVIRONMENTAL ASSESSMENT:

Pursuant to Section 11-200-8(a), Environmental Impact Statement Rules of the Department of Health, State of Hawaii, this disposition is exempt from requirements regarding preparation of an environmental assessment, negative declaration, or environmental impact statement as required by Chapter 343, Hawaii Revised Statutes, as amended, relating to Environmental Impact Statements, because the proposed action falls within Exemption Class #1, Comprehensive Exemption List for the State of Hawaii, Department of Transportation, dated November 15, 2000, as approved by the Environmental Quality Council. Exemption Class #1 covers operations, repairs, or maintenance of existing structures, facilities, equipment, or topographical features involving negligible or no expansion or change of use beyond that previously existing.

BLNR – ISSUANCE OF A REVOCABLE PERMIT FOR VEHICLE PARKING
ABLE FREIGHT SERVICES, INC.

Page 3

REMARKS:

The DOT has no objections to AFS's request and therefore, in accordance with Sections 171-11 and 171-55, HRS, relating to Public Purposes and Permits, respectively and therefore, the DOT proposes to issue a month-to-month parking permit to AFS, Area/Space Nos. 610-154D, -154E & -154F for vehicular parking at KOA.

RECOMMENDATION:

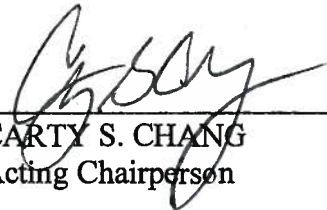
That the Board authorize the Department of Transportation to issue a month-to-month parking permit to AFS, subject to: (1) terms and conditions herein outlined, which are by reference incorporated herein; and (2) such additional terms and conditions as may be prescribed by the Director of Transportation to best serve the interests of the State.

Respectfully submitted,

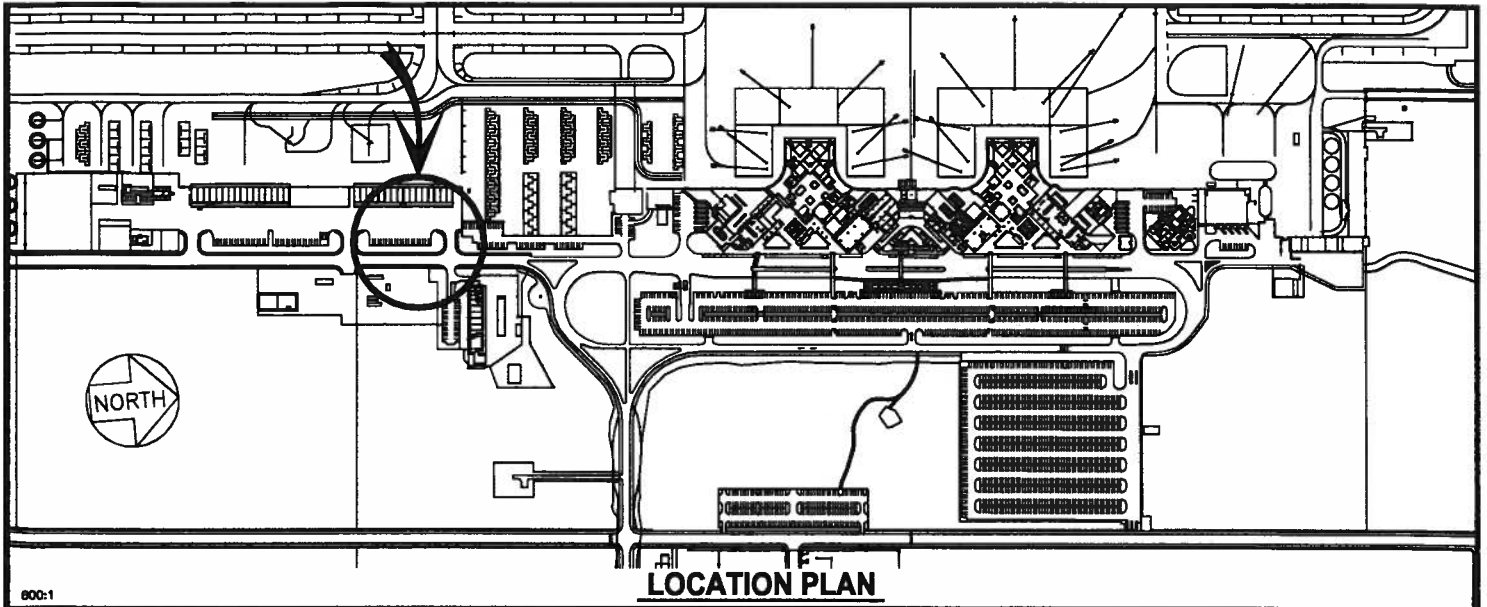


FORD N. FUCHIGAMI
Director of Transportation

APPROVED FOR SUBMITTAL:

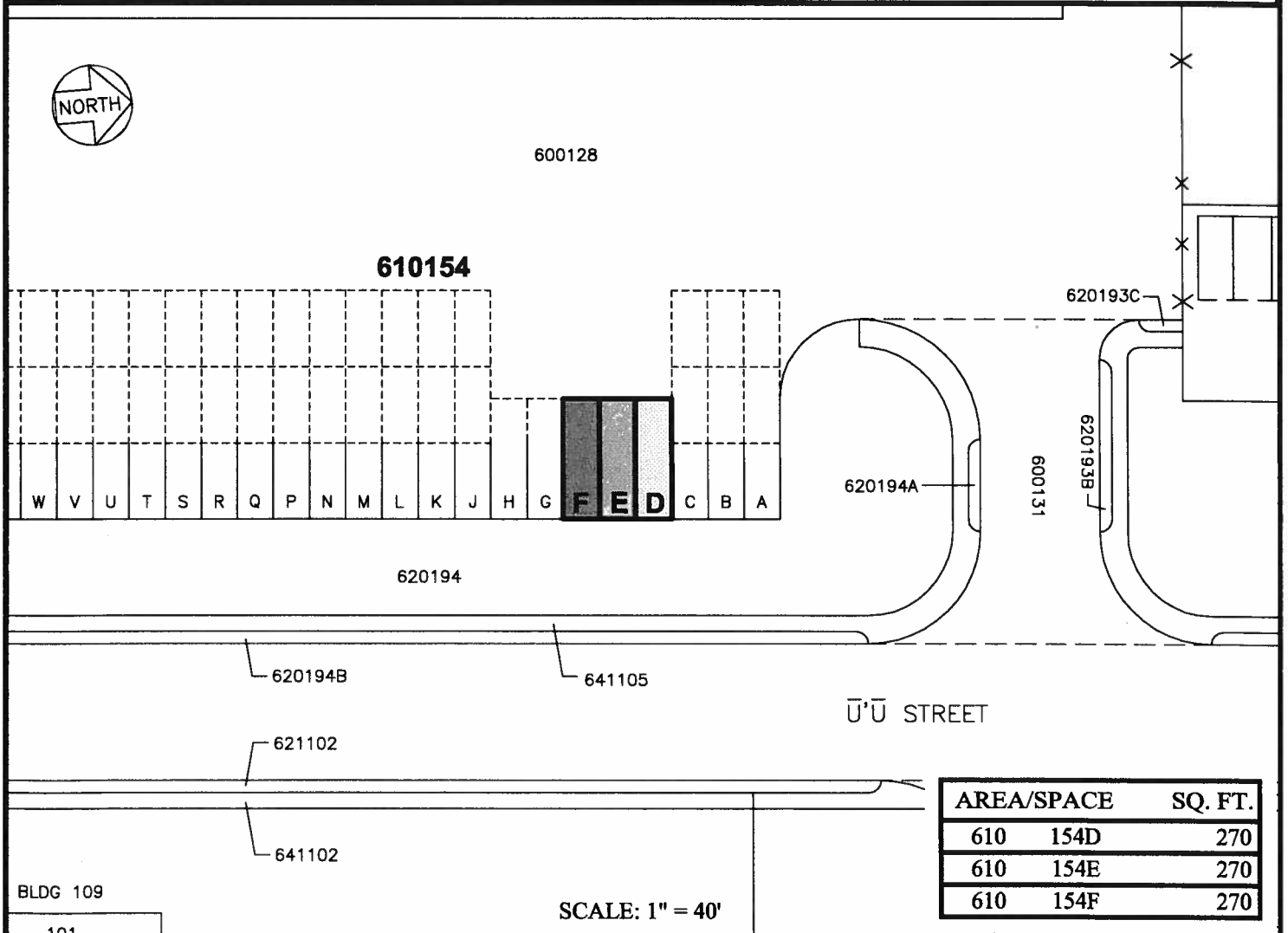


CARTY S. CHANG
Acting Chairperson



LOCATION PLAN

800:1



610154

W V U T S R Q P N M L K J H G **F E D** C B A

AREA/SPACE	SQ. FT.
610 154D	270
610 154E	270
610 154F	270

SCALE: 1" = 40'

BLDG 109

PP-14-N002

DATE : JANUARY 2015

EXHIBIT: **A**



ABLE FREIGHT SERVICES, INC.

PARKING STALLS
AIR CARGO AREA

610154D-F
PLATS C1, 39, 59