

DAVID Y. IGE
GOVERNOR



STATE OF HAWAII
DEPARTMENT OF TRANSPORTATION
869 PUNCHBOWL STREET
HONOLULU, HAWAII 96813-5097

FORD N. FUCHIGAMI
DIRECTOR

Deputy Directors
JADE T. BUTAY
ROSS M. HIGASHI
EDWIN H. SNIFFEN

IN REPLY REFER TO:

Board of Land and
Natural Resources
State of Hawaii
Honolulu, Hawaii

ISSUANCE OF A REVOCABLE PERMIT FOR A PORTER SERVICE OFFICE
S A S SERVICES GROUP, INC.
EWA DOMESTIC EXTENSION
HONOLULU INTERNATIONAL AIRPORT
TAX MAP KEY: (1) 1-1-003: 042 (PORTION)

OAHU

LEGAL REFERENCE:

Section 171-55, Hawaii Revised Statutes

APPLICANT:

S A S Services Group, Inc. (SAS), whose business address is 630 Sepulveda Boulevard,
Suite 9A, El Segundo, California 90245

LOCATION:

Ewa Domestic Extension, Ground Level, Space Nos. 341-131D and 341-131E at
Honolulu International Airport, Tax Map Key: 1st Division, 1-1-003: 042 (Portion)

AREA:

Space No. 341-131D, containing an area of approximately 280 square feet and
Space No. 341-131E, containing an area of approximately 125 square feet; as shown and
delineated on the attached map labeled Exhibit "A".

ZONING:

State Land Use District: Urban
City and County of Honolulu LUO: Industrial (I-2)

ITEM M-2

LAND TITLE STATUS:

Non-ceded - Section 5(a) lands of the Hawaii Admission Act
DHHL 30% entitlement lands pursuant to Hawaii Admission Act YES ___ NO X

CURRENT USE STATUS:

Land presently encumbered by Governor’s Executive Order No. 3201, dated June 8, 1983, setting aside 3,152.177 acres designated as Honolulu International Airport under the control and management of the State of Hawaii, Department of Transportation, Airports Division for Airport Purposes.

CHARACTER OF USE:

SAS will use the space for a porter service office, in support of its operations as a permittee authorized to do airport porter service at Honolulu International Airport.

COMMENCEMENT DATE:

To be determined by the Director of Transportation at a later date.

MONTHLY RENTAL:

\$988.20

SECURITY DEPOSIT:

\$2,964.60

HOLDOVER TENANCY:

\$32.94

DCCA VERIFICATION:

Place of business registration confirmed:	YES <u>X</u>	NO ___
Registered business name confirmed:	YES <u>X</u>	NO ___
Good standing confirmed:	YES <u>X</u>	NO ___

CHAPTER 343, HRS - ENVIRONMENTAL ASSESSMENT:

Pursuant to Section 11-200-8(a), Environmental Impact Statement Rules of the Department of Health, State of Hawaii, this disposition is exempt from requirements regarding preparation of an environmental assessment, negative declaration, or

environmental impact statement as required by Chapter 343, Hawaii Revised Statutes, as amended, relating to Environmental Impact Statements, because the proposed action falls within Exemption Class #1, Comprehensive Exemption List for the State of Hawaii, Department of Transportation, dated November 15, 2000, as approved by the Environmental Quality Council. Exemption Class #1 covers operations, repairs, or maintenance of existing structures, facilities, equipment, or topographical features involving negligible or no expansion or change of use beyond that previously existing.

REMARKS:

In accordance with Section 171-55 HRS, relating to Permits, the Department of Transportation proposes to issue a month-to-month Revocable Permit to S A S Services Group, Inc. to occupy a portion of Building 341, Space Nos. 131D and 131E, to use as an office in support of SAS's porter service operations at Honolulu International Airport.

RECOMMENDATION:

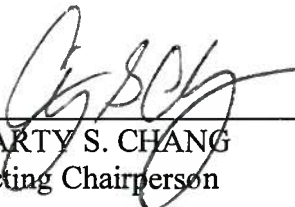
That the Board authorize the Department of Transportation to issue a month-to-month revocable permit to S A S Services Group, Inc., subject to: (1) terms and conditions herein outlined, which are by reference incorporated herein; and (2) such additional terms and conditions as may be prescribed by the Director of Transportation to best serve the interests of the State.

Respectfully submitted,

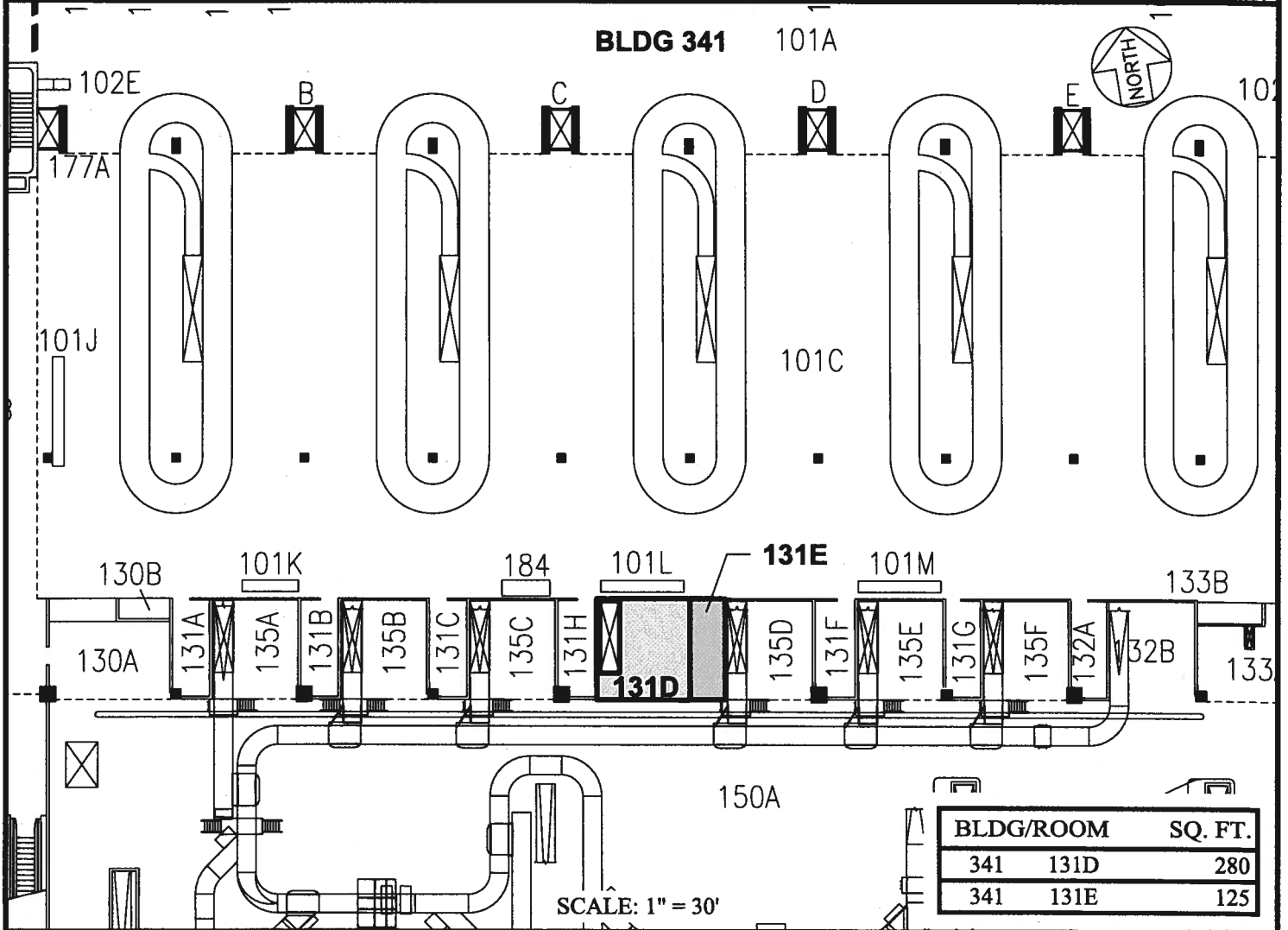
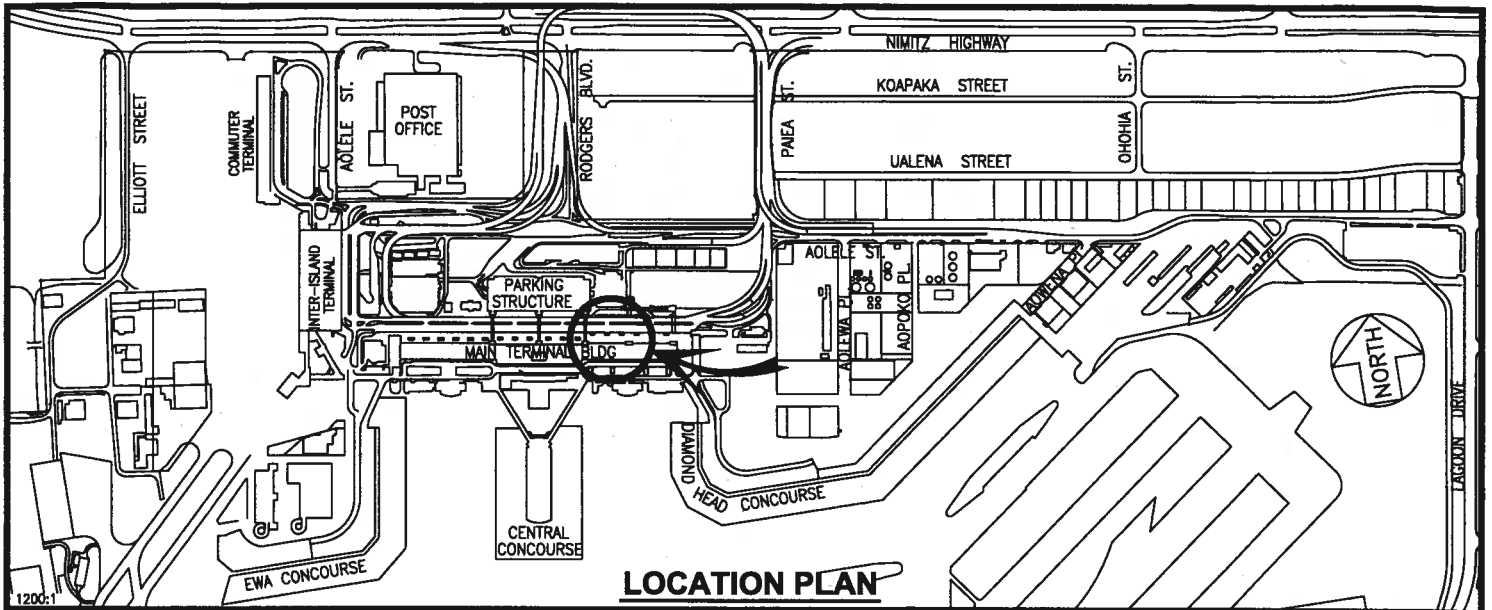


FORD N. FUCHIGAMI
Director of Transportation

APPROVED FOR SUBMITTAL:



CARTY S. CHANG
Acting Chairperson



RP-8264

DATE : DECEMBER 2014

EXHIBIT: **A**



Airports Division

SAS SERVICES GROUP, INC

BUILDING 341
DIAMOND HEAD EXTENSION
GROUND LEVEL

341131D
 341131E
 PLAT A1