

DAVID Y. IGE
GOVERNOR



STATE OF HAWAII
DEPARTMENT OF TRANSPORTATION
869 PUNCHBOWL STREET
HONOLULU, HAWAII 96813-5097

FORD N. FUCHIGAMI
DIRECTOR

Deputy Directors
JADE T. BUTAY
ROSS M. HIGASHI
EDWIN H. SNIFFEN

IN REPLY REFER TO:

Board of Land and
Natural Resources
State of Hawaii
Honolulu, Hawaii

ISSUANCE OF A REVOCABLE PERMIT FOR AIRCRAFT PARKING
R&D AVIATION L.L.C.
HONOLULU INTERNATIONAL AIRPORT
TAX MAP KEY: (1) 1-1-76: PORTION OF 23

OAHU

REQUEST:

Issuance of a Revocable Permit for Aircraft Parking (parking permit) to
R&D Aviation L.L.C., situated at Honolulu International Airport.

LEGAL REFERENCE:

Section 171-55, Hawaii Revised Statutes

APPLICANT:

R&D Aviation L.L.C., whose mailing address is 1320 Ala Kupuna Street,
Honolulu, Hawaii 96819.

LOCATION AND TAX MAP KEY:

A portion of Honolulu International Airport, identified as the South Ramp,
Tax Map Key: 1st Division, 1-1-76: portion of 23

AREA:

Area/Space No. 423-186D, containing an area of approximately 2,340 square feet, as
shown and delineated on the attached map labeled Exhibit "A".

ZONING:

State Land Use District: Urban
City and County of Honolulu LUO: Industrial (I-2)

ITEM M-5

LAND TITLE STATUS:

Non-ceded - Section 5(a) lands of the Hawaii Admission Act
DHHL 30% entitlement lands pursuant to Hawaii Admission Act YES ___ NO X

CURRENT USE STATUS:

Land presently encumbered by Governor's Executive Order No. 3201, dated June 8, 1983, setting aside 3,152.177 acres designated as Honolulu International Airport under the control and management of the State of Hawaii, Department of Transportation, Airports Division for Airport Purposes.

CHARACTER OF USE:

Aircraft Tie-down

COMMENCEMENT DATE:

Upon execution

MONTHLY RENTAL:

\$136.00

SECURITY DEPOSIT:

Three (3) times the monthly rental in effect.

CHAPTER 343, HRS - ENVIRONMENTAL ASSESSMENT:

Pursuant to Section 11-200-8(a), Environmental Impact Statement Rules of the Department of Health, State of Hawaii, this disposition is exempt from requirements regarding preparation of an environmental assessment, negative declaration, or environmental impact statement as required by Chapter 343, Hawaii Revised Statutes, as amended, relating to Environmental Impact Statements, because the proposed action falls within Exemption Class #1, Comprehensive Exemption List for the State of Hawaii, Department of Transportation, dated November 15, 2000, as approved by the Environmental Quality Council. Exemption Class #1 covers operations, repairs, or maintenance of existing structures, facilities, equipment, or topographical features involving negligible or no expansion or change of use beyond that previously existing.

BLNR – ISSUANCE OF A REVOCABLE PERMIT FOR AIRCRAFT PARKING
R&D AVIATION L.L.C.
Page 3

REMARKS:

In accordance with Section 171-55, HRS, relating to Permits, the Department of Transportation has no objections to the issuance of a month-to-month parking permit to R&D Aviation L.L.C., at Honolulu International Airport.

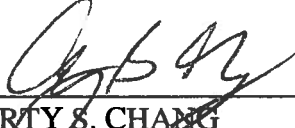
RECOMMENDATION:

That the Board authorize the Department of Transportation to issue a month-to-month parking permit to R&D Aviation L.L.C., subject to: (1) terms and conditions herein outlined, which are by reference incorporated herein; and (2) such additional terms and conditions as may be prescribed by the Director of Transportation to best serve the interests of the State.

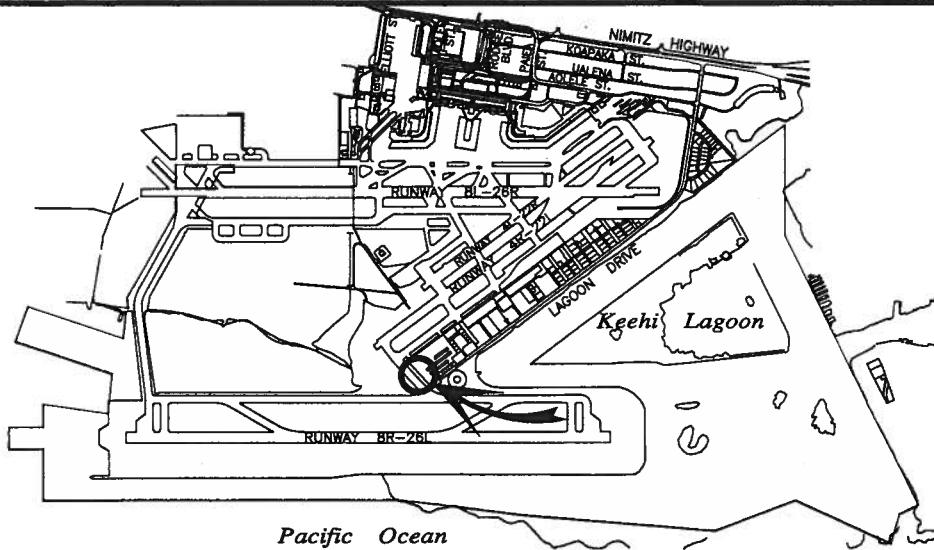
Respectfully submitted,


FORD N. FUCHIGAMI
Director of Transportation

APPROVED FOR SUBMITTAL:

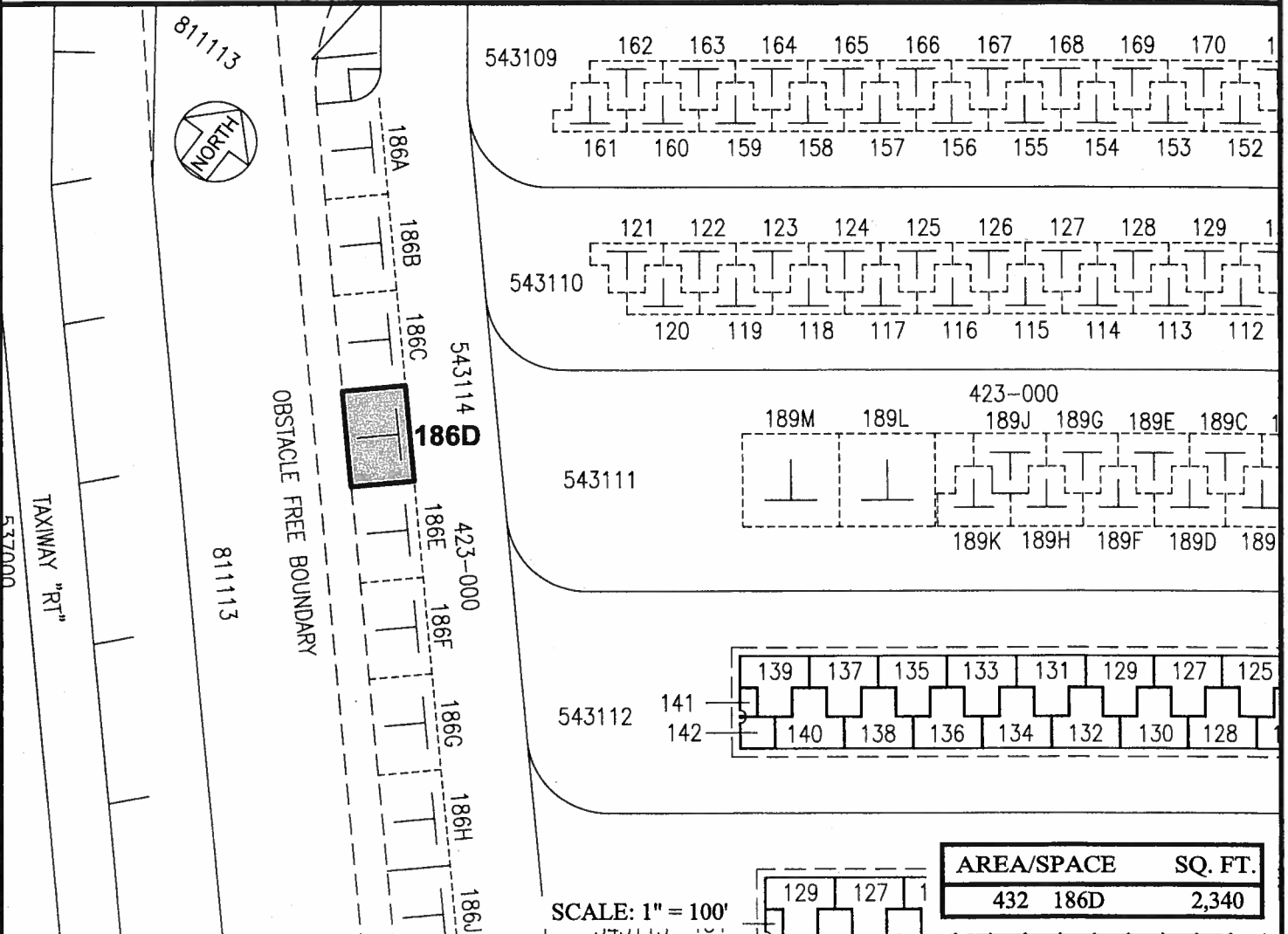


CARTY S. CHANG
Acting Chairperson



LOCATION PLAN

5000:1



AREA/SPACE	SQ. FT.
432 186D	2,340

PP-14-0024

DATE : OCTOBER 2014

EXHIBIT: **A**



R&D AVIATION L.L.C

TIE DOWN
SOUTH RAMP

423186D
PLAT 45

HONOLULU INTERNATIONAL AIRPORT

N:\AIRPORTS\HNL_HONOLULU\CAD\PM\HNL_423186D-01.DWG