

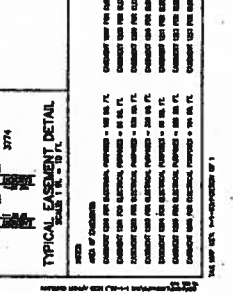
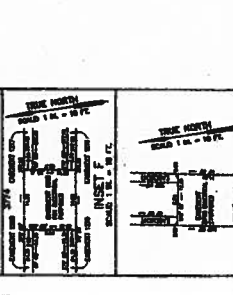
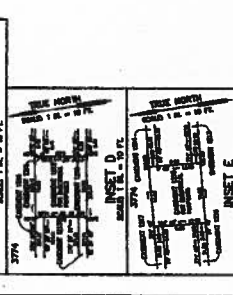
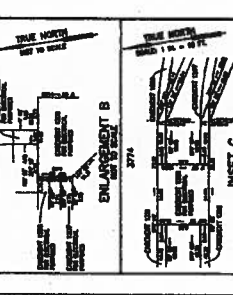
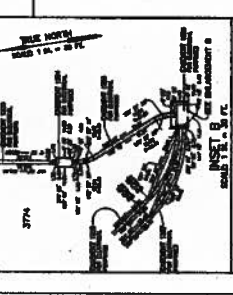
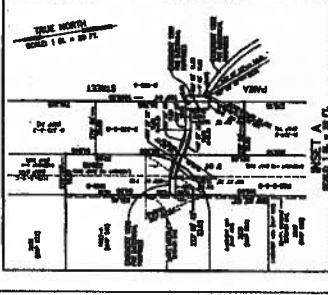
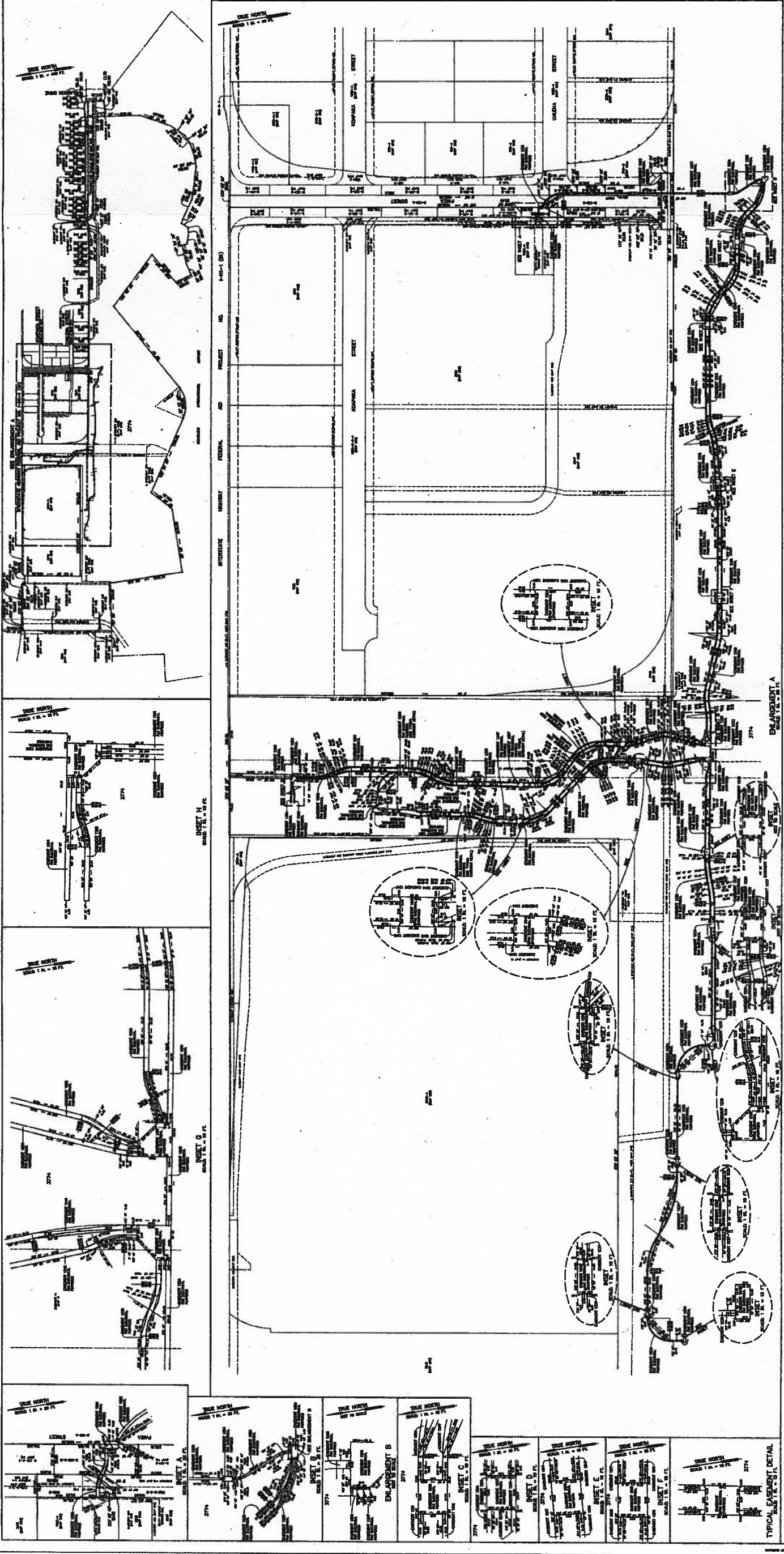
LAND COURT
 LAND COURT APPLICATION 574
 DESIGNATION OF EASEMENT 1200
 AFFECTING LOTS 1082-B, 1125-B-5-8
 AND B-335-B-2
 AS SHOWN ON MAPS 541, 561
 AND 74, RESPECTIVELY
 EASEMENT 1201 AFFECTING LOTS
 B-130-A AND B-338-B-2
 AS SHOWN ON MAP 74
 EASEMENT 1202 AFFECTING LOTS
 B-130-A, B-140-B, B-303-A-2,
 B-303-B-2 AND B-307-B
 AS SHOWN ON MAP 74
 AND EASEMENTS 1203 TO 1205, INCLUSIVE
 AFFECTING LOT 3774 AS SHOWN ON MAP 629
 AT CONCORDIA, MISSOURI, UNITED STATES



SCALE OF MAPS
 1" = 100' (1:1200)
 1" = 200' (1:2400)
 1" = 400' (1:4800)
 1" = 800' (1:9600)

APPROVED AND APPROVED BY ORDER OF THE JUDGE
 OF THE LAND COURT DATED DECEMBER 11, 2014.
 BY ORDER OF THE COURT

James A. Brown
 James A. Brown
 Professional Engineer



TYPICAL EASEMENT DETAIL
 1. EASEMENT FOR THE ELECTRIC, TELEPHONE AND CABLE COMPANY TO INSTALL, MAINTAIN AND OPERATE OVERHEAD AND UNDERGROUND LINES, TOWERS, POLES, AND EQUIPMENT, INCLUDING THE RIGHT TO CUT AND TRIM NEARBY TREES AND BUSHES AS NECESSARY FOR THE PROPER MAINTENANCE AND OPERATION OF THE LINES AND EQUIPMENT.
 2. EASEMENT FOR THE ELECTRIC, TELEPHONE AND CABLE COMPANY TO INSTALL, MAINTAIN AND OPERATE UNDERGROUND LINES AND EQUIPMENT, INCLUDING THE RIGHT TO CUT AND TRIM NEARBY TREES AND BUSHES AS NECESSARY FOR THE PROPER MAINTENANCE AND OPERATION OF THE LINES AND EQUIPMENT.
 3. EASEMENT FOR THE ELECTRIC, TELEPHONE AND CABLE COMPANY TO INSTALL, MAINTAIN AND OPERATE UNDERGROUND LINES AND EQUIPMENT, INCLUDING THE RIGHT TO CUT AND TRIM NEARBY TREES AND BUSHES AS NECESSARY FOR THE PROPER MAINTENANCE AND OPERATION OF THE LINES AND EQUIPMENT.
 4. EASEMENT FOR THE ELECTRIC, TELEPHONE AND CABLE COMPANY TO INSTALL, MAINTAIN AND OPERATE UNDERGROUND LINES AND EQUIPMENT, INCLUDING THE RIGHT TO CUT AND TRIM NEARBY TREES AND BUSHES AS NECESSARY FOR THE PROPER MAINTENANCE AND OPERATION OF THE LINES AND EQUIPMENT.
 5. EASEMENT FOR THE ELECTRIC, TELEPHONE AND CABLE COMPANY TO INSTALL, MAINTAIN AND OPERATE UNDERGROUND LINES AND EQUIPMENT, INCLUDING THE RIGHT TO CUT AND TRIM NEARBY TREES AND BUSHES AS NECESSARY FOR THE PROPER MAINTENANCE AND OPERATION OF THE LINES AND EQUIPMENT.
 6. EASEMENT FOR THE ELECTRIC, TELEPHONE AND CABLE COMPANY TO INSTALL, MAINTAIN AND OPERATE UNDERGROUND LINES AND EQUIPMENT, INCLUDING THE RIGHT TO CUT AND TRIM NEARBY TREES AND BUSHES AS NECESSARY FOR THE PROPER MAINTENANCE AND OPERATION OF THE LINES AND EQUIPMENT.
 7. EASEMENT FOR THE ELECTRIC, TELEPHONE AND CABLE COMPANY TO INSTALL, MAINTAIN AND OPERATE UNDERGROUND LINES AND EQUIPMENT, INCLUDING THE RIGHT TO CUT AND TRIM NEARBY TREES AND BUSHES AS NECESSARY FOR THE PROPER MAINTENANCE AND OPERATION OF THE LINES AND EQUIPMENT.
 8. EASEMENT FOR THE ELECTRIC, TELEPHONE AND CABLE COMPANY TO INSTALL, MAINTAIN AND OPERATE UNDERGROUND LINES AND EQUIPMENT, INCLUDING THE RIGHT TO CUT AND TRIM NEARBY TREES AND BUSHES AS NECESSARY FOR THE PROPER MAINTENANCE AND OPERATION OF THE LINES AND EQUIPMENT.
 9. EASEMENT FOR THE ELECTRIC, TELEPHONE AND CABLE COMPANY TO INSTALL, MAINTAIN AND OPERATE UNDERGROUND LINES AND EQUIPMENT, INCLUDING THE RIGHT TO CUT AND TRIM NEARBY TREES AND BUSHES AS NECESSARY FOR THE PROPER MAINTENANCE AND OPERATION OF THE LINES AND EQUIPMENT.
 10. EASEMENT FOR THE ELECTRIC, TELEPHONE AND CABLE COMPANY TO INSTALL, MAINTAIN AND OPERATE UNDERGROUND LINES AND EQUIPMENT, INCLUDING THE RIGHT TO CUT AND TRIM NEARBY TREES AND BUSHES AS NECESSARY FOR THE PROPER MAINTENANCE AND OPERATION OF THE LINES AND EQUIPMENT.

EXHIBIT A