



STATE OF HAWAII
DEPARTMENT OF TRANSPORTATION
869 PUNCHBOWL STREET
HONOLULU, HAWAII 96813-5097

FORD N. FUCHIGAMI
DIRECTOR

Deputy Directors
JADE T. BUTAY
ROSS M. HIGASHI
EDWIN H. SNIFFIN
DARRELL T. YOUNG

IN REPLY REFER TO:

Board of Land and
Natural Resources
State of Hawaii
Honolulu, Hawaii

ISSUANCE OF A REVOCABLE PERMIT FOR AIRCRAFT PARKING
BARBERS POINT FLIGHT SCHOOL, LLC.
KALAELOA AIRPORT, ISLAND OF OAHU, STATE OF HAWAII
TAX MAP KEY: (1) 9-1-13: PORTION OF 32

OAHU

REQUEST:

Issuance of a Revocable Permit for Aircraft Parking (parking permit) to
Barbers Point Flight School, LLC., situated at Kalaeloa Airport.

LEGAL REFERENCE:

Section 171-55, Hawaii Revised Statutes

APPLICANT:

Barbers Point Flight School, LLC., whose mailing address is 91-1259 Midway Road,
Kapolei, Hawaii 96707

LOCATION AND TAX MAP KEY:

A portion of Kalaeloa Airport, Kapolei, Island of Oahu, State of Hawaii, identified by
Tax Map Key: 1st Division, 9-1-13: portion of 32

AREA:

Area/Space No. 405-103, containing an area of approximately 849 square feet,
as shown and delineated on the attached map labeled Exhibit "A".

ZONING:

State Land Use District: Urban
City and County of Honolulu LUO: P-2 (To be rezoned in the future)

ITEM M-11

BLNR – ISSUANCE OF A REVOCABLE PERMIT FOR AIRCRAFT PARKING
BARBERS POINT FLIGHT SCHOOL, LLC.
Page 2

LAND TITLE STATUS:

Non-ceded - Section 5(a) lands of the Hawaii Admission Act
DHHL 30% entitlement lands pursuant to Hawaii Admission Act YES ___ NO X

CURRENT USE STATUS:

Land presently encumbered by Governor's Executive Order No. 3861, setting aside
Kalaeloa Airport under the control and management of the Department of Transportation,
Airports Division, State of Hawaii, for Airport Purposes.

CHARACTER OF USE:

Aircraft Tie-down

COMMENCEMENT DATE:

Upon execution

MONTHLY RENTAL:

\$24.00

SECURITY DEPOSIT:

Three (3) times the monthly rental in effect.

CHAPTER 343, HRS - ENVIRONMENTAL ASSESSMENT:

The subject land area is covered by the Final Environmental Assessment for the Kalaeloa
Airfield Development Plan Improvements, State Project No. AO5011-02 dated June 2010.
This Environmental Assessment was prepared by Wilson Okamoto Corp. for the State of
Hawaii, Department of Transportation, Airports Division, in part to evaluate the
environmental effects of the recommended Kalaeloa Airfield Master Plan to meet existing
and forecast general aviation demands.

REMARKS:

In accordance with Section 171-55, HRS, relating to Permits, the Department of
Transportation has no objections to the issuance of a month-to-month parking permit to
Barbers Point Flight School, LLC., at Kalaeloa Airport.

RECOMMENDATION:

That the Board authorize the Department of Transportation to issue a month-to-month parking permit to Barbers Point Flight School, LLC., subject to: (1) terms and conditions herein outlined, which are by reference incorporated herein; and (2) such additional terms and conditions as may be prescribed by the Director of Transportation to best serve the interests of the State.

Respectfully submitted,

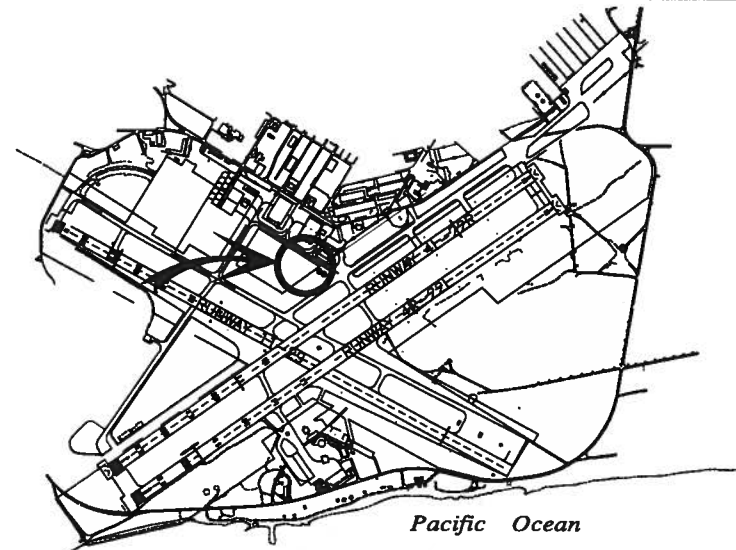


FORD N. FUCHIGAMI
Director of Transportation

APPROVED FOR SUBMITTAL:



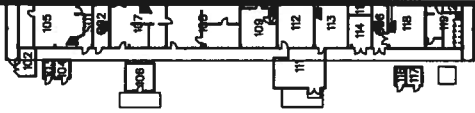
CARTY S. CHANG
Acting Chairperson



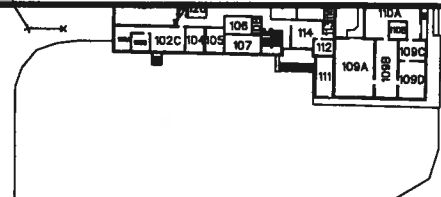
Pacific Ocean

LOCATION PLAN

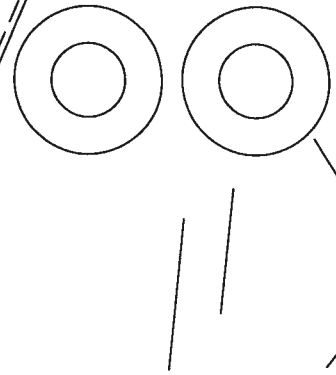
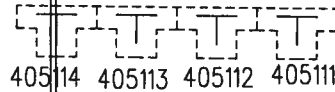
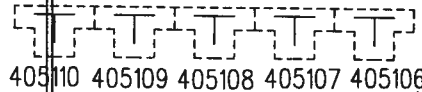
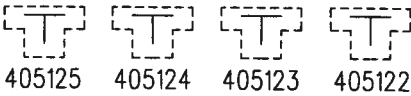
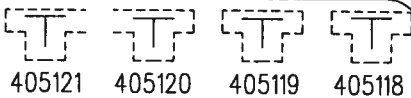
3000:1



HANGAR
110



BLDG 104
ATCT



SCALE: 1" = 100'

AREA/SPACE	SQ. FT.
405 103	849

PP-15-0010

DATE : APRIL 2015

EXHIBIT: **A**



Airports Division

BARBERS POINT
FLIGHT SCHOOL, LLC.

TIE-DOWN AREA

405103