

DAVID Y. IGE
GOVERNOR



STATE OF HAWAII
DEPARTMENT OF TRANSPORTATION
869 PUNCHBOWL STREET
HONOLULU, HAWAII 96813-5097

FORD. N. FUCHIGAMI
DIRECTOR

Deputy Director
JADE T. BUTAY
ROSS M. HIGASHI
EDWIN H. SNIFFIN
DARELL T. YOUNG

IN REPLY REFER TO:

Board of Land and
Natural Resources
State of Hawaii
Honolulu, Hawaii

ISSUANCE OF A REVOCABLE PERMIT FOR AIRCRAFT EQUIPMENT PARKING
AIRCRAFT SERVICE INTERNATIONAL, INC.
HONOLULU INTERNATIONAL AIRPORT
TAX MAP KEY: (1) 1-1-72:69 (PORTION), (1) 1-1-72:70 AND (1) 1-1-76:8

OAHU

LEGAL REFERENCE:

Section 171-55, Hawaii Revised Statutes

APPLICANT:

Aircraft Service International, Inc., whose business address is 3201 Aolele Street,
Honolulu, Hawaii 96819-1866.

LOCATION:

90 Nakolo Place, Honolulu, Hawaii 96819, Honolulu International Airport, Island of
Oahu, State of Hawaii, identified by Tax Map Key: 1st Division, 1-1-72:69 (Portion),
1st Division, 1-1-72:70, and 1st Division, 1-1-76:8.

AREA:

Building/Room No. 220-100, containing an area of approximately 4,000 square feet;
Area/Space No. 009-115D, containing an area of approximately 1,290 square feet; and
Area/Space No. 011-107, containing an area of approximately 11,500 square feet,
as shown and delineated on the attached map labeled Exhibit "A" and "A-1".

ZONING:

State Land Use District: Urban
City and County of Honolulu LUO: Industrial (I-2)

ITEM M-8

BLNR – ISSUANCE OF A REVOCABLE PERMIT
AIRCRAFT SERVICE INTERNATIONAL, INC.
Page 2

LAND TITLE STATUS:

Public Law 88-233 - lands of the Hawaii Admission Act – Ceded
DHHL 30% entitlement lands pursuant to the Hawaii State Constitution: YES ___ NO X

CURRENT USE STATUS:

Land presently encumbered by Governor’s Executive Order No. 3201, dated June 8, 1983, setting aside 3,152.177 acres designated as Honolulu International Airport under the control and management of the State of Hawaii, Department of Transportation, Airports Division for Airport Purposes.

CHARACTER OF USE:

Aircraft Equipment Parking for Ground Handling.

COMMENCEMENT DATE:

Upon execution of the Revocable Permit.

MONTHLY RENTAL:

\$7,605.16

SECURITY DEPOSIT:

Three (3) times the monthly rental in effect.

HOLDOVER TENANCY:

\$253.51

DCCA VERIFICATION:

Place of business registration confirmed:	YES <u>X</u>	NO ___
Registered business name confirmed:	YES <u>X</u>	NO ___
Good standing confirmed:	YES <u>X</u>	NO ___

CHAPTER 343, HRS - ENVIRONMENTAL ASSESSMENT:

Pursuant to Section 11-200-8(a), Environmental Impact Statement Rules of the Department of Health, State of Hawaii, this disposition is exempt from requirements regarding preparation of an environmental assessment, negative declaration, or environmental impact statement as required by Chapter 343, Hawaii Revised Statutes, as amended, relating to Environmental Impact Statements, because the proposed action falls within Exemption Class #1, Comprehensive Exemption List for the State of Hawaii, Department of Transportation, dated November 15, 2000, as approved by the Environmental Quality Council. Exemption Class #1 covers operations, repairs, or maintenance of existing structures, facilities, equipment, or topographical features involving negligible or no expansion or change of use beyond that previously existing.

REMARKS:

In accordance with Section 171-55, HRS, relating to Permits, the Department of Transportation proposes to issue a month-to-month Revocable Permit to Aircraft Service International, Inc. to use for aircraft equipment parking for ground handling at Honolulu International Airport.

RECOMMENDATION:

That the Board authorize the Department of Transportation to issue a month-to-month revocable permit to Aircraft Service International, Inc., subject to: (1) terms and conditions herein outlined, which are by reference incorporated herein; and (2) such additional terms and conditions as may be prescribed by the Director of Transportation to best serve the interests of the State.

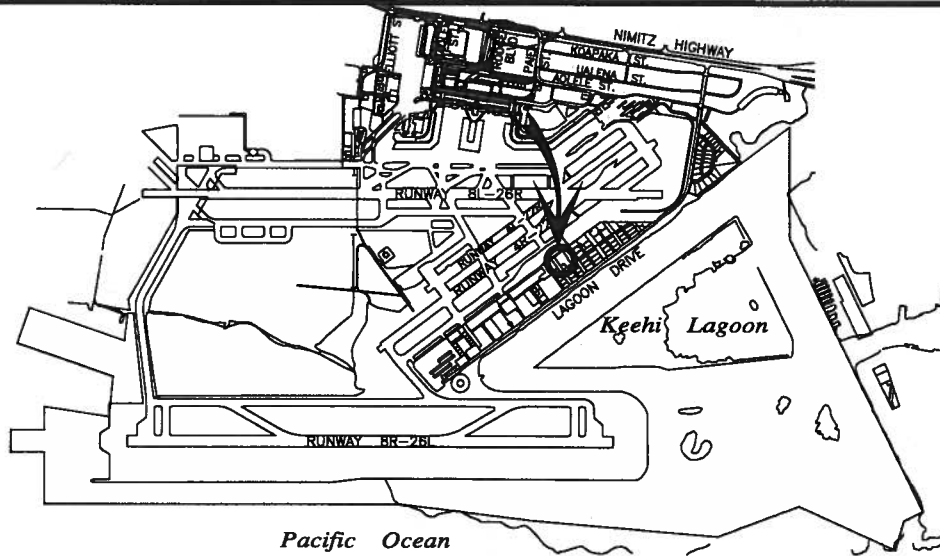
Respectfully submitted,


FORD N. FUCHIGAMI
Director of Transportation

APPROVED FOR SUBMITTAL:

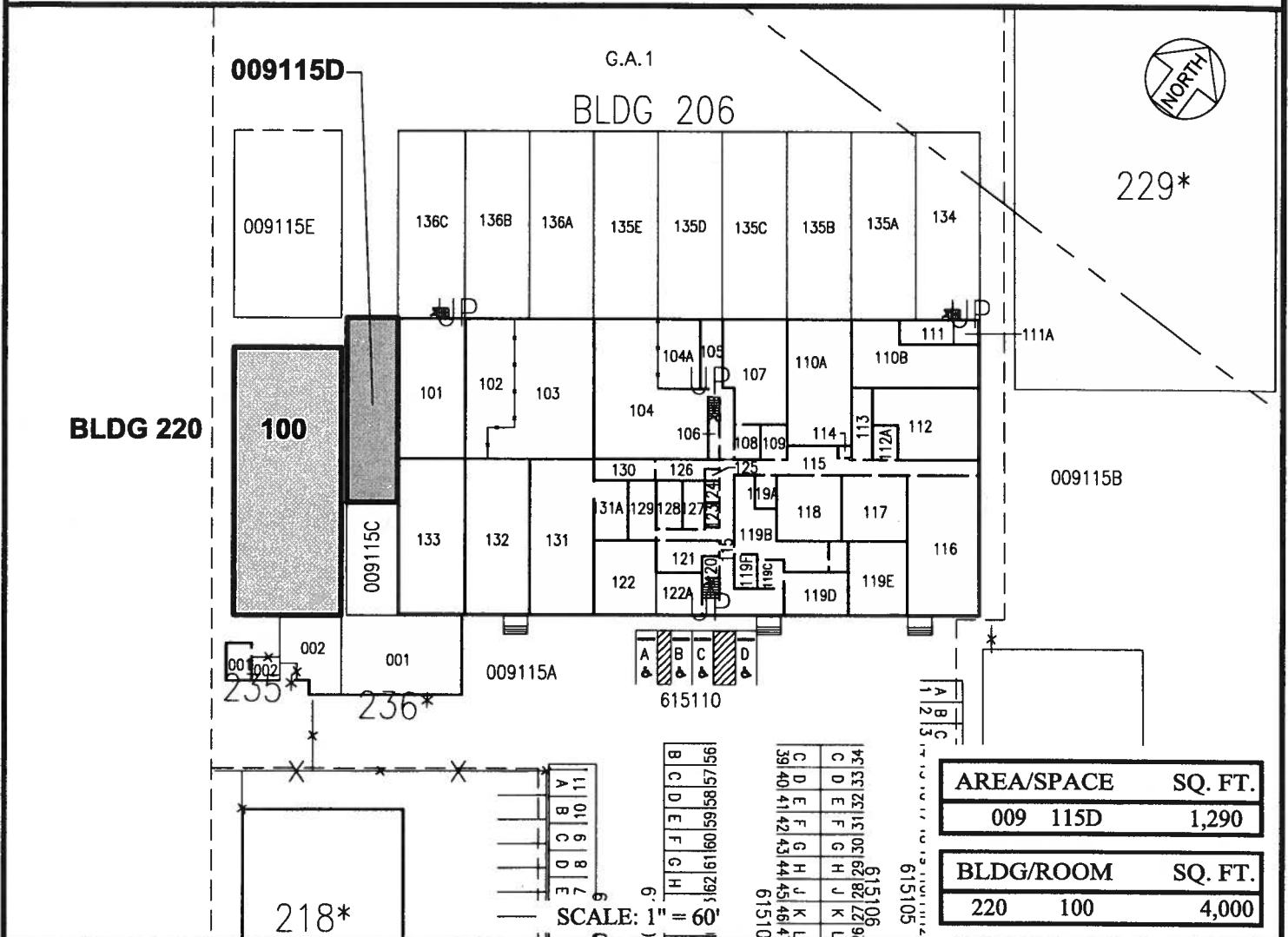


CARTY S. CHANG
Acting Chairperson



LOCATION PLAN

5000:1



BLDG 220

009115D

G.A.1
BLDG 206

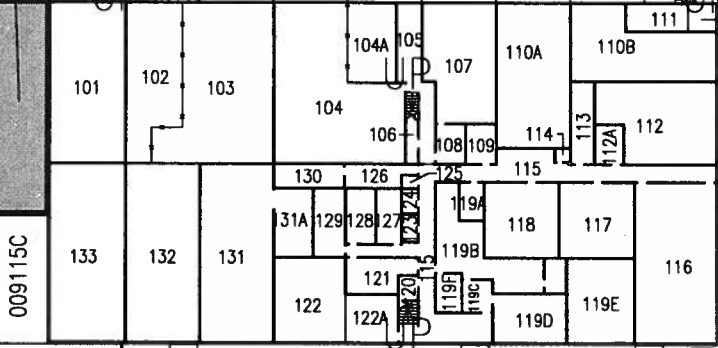
229*

009115E

136C 136B 136A 135E 135D 135C 135B 135A 134

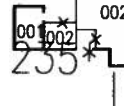


100



111A

009115B



001
002

235*
236*

009115A



615110



615105

218*

SCALE: 1" = 60'

AREA/SPACE	SQ. FT.
009 115D	1,290

BLDG/ROOM	SQ. FT.
220 100	4,000

RP-8301

DATE : APRIL 2015

EXHIBIT: **A**



Airports Division

**AIRCRAFT SERVICE
INTERNATIONAL, INC.**

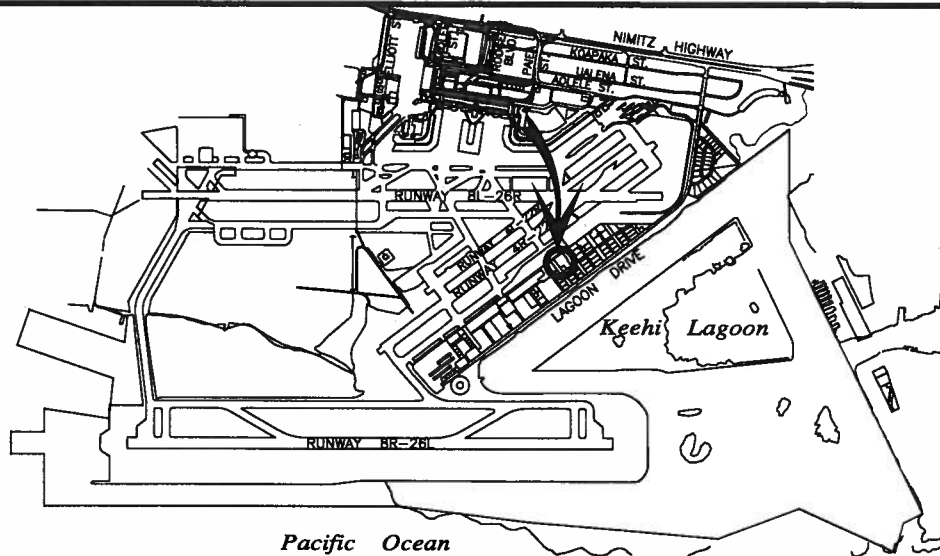
**BUILDING 220
GENERAL AVIATION
SOUTH RAMP**

**009115D
220100**

PLAT 36

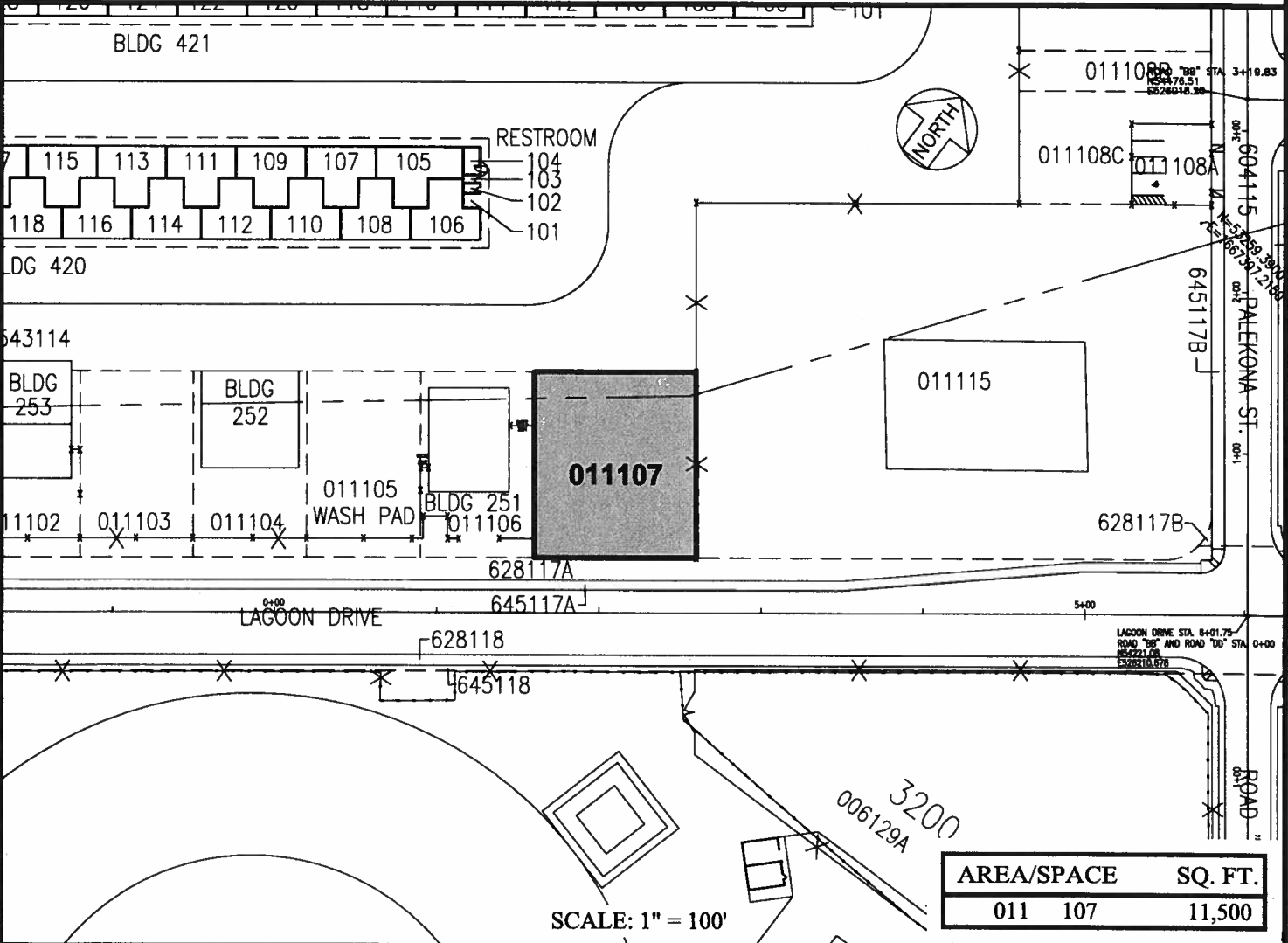
HONOLULU INTERNATIONAL AIRPORT

N:\AIRPORTS\HNL_HONOLULU\CAD\PM\HNL_009115D-01.DWG



LOCATION PLAN

5000:1



AREA/SPACE	SQ. FT.
011 107	11,500

RP-8301

DATE : APRIL 2015

EXHIBIT: **B**



AIRCRAFT SERVICE
INTERNATIONAL, INC.

GENERAL AVIATION
SOUTH RAMP

011107
PLAT 36

HONOLULU INTERNATIONAL AIRPORT

N:\AIRPORTS\HNL_HONOLULU\CAD\FM\HNL_011107-01.DWG