

STATE OF HAWAI'I
DEPARTMENT OF LAND AND NATURAL RESOURCES
Division of Forestry and Wildlife
Honolulu, Hawai'i

July 24, 2015

Chairperson and Members
Board of Land and Natural Resources
State of Hawai'i
Honolulu, Hawai'i

Land Board Members:

SUBJECT: ACCEPTANCE OF HEARING OFFICER'S REPORT ON A PUBLIC HEARING FOR FOUR PROPOSED ADDITIONS AND ONE PROPOSED WITHDRAWAL TO THE FOREST RESERVE SYSTEM ON THE ISLAND OF O'AHU.

APPROVAL AND RECOMMENDATION TO THE GOVERNOR ISSUANCE OF AN EXECUTIVE ORDER FOR ADDITION OF TAX MAP KEYS (1) 2-2-053: PORTION OF 001; (1) 2-2-053:002 AND 003; (1) 2-5-010: PORTIONS OF 001 AND 003; (1) 2-5-019: PORTION OF 005; (1) 2-5-019:013; (1) 2-9-031: PORTION OF 002; (1) 2-9-049:004; AND (1) 3-4-033:001, COMPRISING APPROXIMATELY 127.818 ACRES, TO HONOLULU WATERSHED FOREST RESERVE, PAUOA, MĀNOA, TANTALUS, AND PĀLOLO, HONOLULU, O'AHU.

APPROVAL AND RECOMMENDATION TO THE GOVERNOR ISSUANCE OF AN EXECUTIVE ORDER FOR WITHDRAWAL OF TAX MAP KEYS (1) 1-4-014:001 AND 026; (1) 1-4-016:003; (1) 1-4-018:001, 003, 006, 009, 010, AND 011; (1) 1-4-018: PORTIONS OF 012 THROUGH 016; (1) 1-4-020:013, 039, AND 053; (1) 1-9-007: PORTION OF 001; (1) 2-2-041:003, 008, AND 013; (1) 2-2-054: PORTION OF 001; (1) 2-2-054:002; (1) 2-2-055:001; (1) 2-5-019: PORTIONS OF 003 AND 016; (1) 2-5-024: PORTIONS OF 001 THROUGH 003; (1) 2-5-024:004 THROUGH 020; (1) 2-5-024: PORTION OF 021 AND 027; (1) 2-5-024:028 THROUGH 033; (1) 2-9-051:002; (1) 2-9-054:010; (1) 2-9-055:002; (1) 2-9-055: PORTION OF 006; (1) 2-9-055:007, 008, 009, AND 013; (1) 2-9-057: PORTIONS OF 006, 011, AND 012; (1) 3-3-056:001, 004, AND 005; (1) 3-3-056: PORTION OF 006; (1) 3-3-058:066 AND 067; (1) 3-4-010:019; (1) 3-4-020: PORTION OF 003; (1) 3-4-022:006; (1) 3-4-031:023; (1) 3-4-032:055; (1) 3-5-024:023 AND 032; (1) 3-6-004: PORTIONS OF 001 AND 014; (1) 3-6-019: PORTIONS OF 035 AND 038, COMPRISING APPROXIMATELY 2736.898 ACRES, FROM HONOLULU WATERSHED FOREST RESERVE, KALIHI, NU'UANU, PAUOA, MĀNOA, TANTALUS, MAKIKI, AND WA'AHILA, HONOLULU, O'AHU.

APPROVAL AND RECOMMENDATION TO THE GOVERNOR ISSUANCE OF AN EXECUTIVE ORDER FOR ADDITION OF TAX MAP KEY (1) 3-7-004:002, COMPRISING APPROXIMATELY 263.000 ACRES, TO HONOLULU WATERSHED FOREST RESERVE, NIU, HONOLULU, O'AHU.

APPROVAL AND RECOMMENDATION TO THE GOVERNOR ISSUANCE OF AN EXECUTIVE ORDER FOR ADDITION OF TAX MAP KEY (1) 8-5-006:005, COMPRISING APPROXIMATELY 300.000 ACRES, TO WAI'ANAE KAI FOREST RESERVE, WAI'ANAE, HONOLULU, O'AHU.

APPROVAL AND RECOMMENDATION TO THE GOVERNOR ISSUANCE OF AN EXECUTIVE ORDER FOR ADDITION OF TAX MAP KEY (1) 4-2-010: PORTION OF 001, COMPRISING APPROXIMATELY 1,744.538 ACRES, TO WAIMĀNALO FOREST RESERVE, WAIMĀNALO, HONOLULU, O'AHU.

SUMMARY:

This Board submittal requests acceptance of a Hearing Officer's Report for four proposed additions and one proposed withdrawal to the Forest Reserve System on the Island of O'ahu, and approval and recommendation to the Governor, issuance of Executive Orders (EO) for the addition and withdrawal of lands to the Honolulu Watershed Forest Reserve, the addition of lands to the Wai'anae Kai Forest Reserve, and the addition of lands to the Waimānalo Forest Reserve. These actions represent effort by the Division of Forestry and Wildlife (DOFAW) to complete previously initiated processes and to formalize past action.

LEGAL REFERENCE:

Section 183-11, Hawai'i Revised Statutes (HRS), as amended.

LOCATION AND AREA:

See Exhibit A.

ZONING AND TRUST LAND STATUS:

See Exhibit A.

BACKGROUND:

Honolulu Watershed Forest Reserve

The Honolulu Watershed Forest Reserve (HWFR) was first established by Governor's Proclamation (GP) in 1913, with its last fully consummated revision occurring in 1926, as shown on Registered Map 2718 (Exhibit B). In the 1950's, DOFAW followed the required administrative process to revise the legal boundary for a second time. Despite obtaining the final approval from the Board of Agriculture and Conservation on December 19, 1960, a Governor's

Executive Order (EO) was never issued, making all of the boundary revisions invalid. Despite this, DOFAW accepted the revised boundary as shown on Plat Map 2134-E (Exhibit C), and has been managing the area as forest reserve (FR) for the last sixty years.

In 2014, DOFAW conducted a boundary analysis to generate an inventory of discrepancies by comparing the current HWFR legal boundary to the area that DOFAW actively manages (Exhibit D). This analysis revealed that there are parcels managed by DOFAW that were never formally added to the FR, as well as parcels that are managed by other agencies that were never withdrawn from the FR. There is also one parcel that is currently included within the boundaries of multiple forest reserves. Resolution of these discrepancies was categorized based on two recommended actions: addition to the FR and withdrawal from the FR (Exhibit E) and are described in further detail below.

Proposed Additions

Pauoa/Mānoa/Pālolo

At its meeting of December 12, 2014, under agenda item C-1, the Board of Land and Natural Resources (Board) approved in concept the addition of State-owned parcels, Tax Map Keys (TMKs) (1) 2-2-053: portion of 001; (1) 2-2-053:002 and 003; (1) 2-5-010: portions of 001 and 003; (1) 2-9-031: portion of 002; (1) 2-9-049:004; and (1) 3-4-033:001, comprising approximately 123.370 acres, to the Honolulu Watershed Forest Reserve, Pauoa, Mānoa, and Pālolo, Honolulu, O'ahu (Exhibit F, G, H). DOFAW intended to add these parcels to the FR System via the invalid 1950's boundary revision, and is currently actively managing them as FR. To correct this oversight, DOFAW is requesting Board approval to add this area to the Honolulu Watershed Forest Reserve.

Tantalus

At its meeting of December 12, 2014, under agenda item C-1, the Board approved in concept the addition of State-owned parcels, TMKs (1) 2-5-019: portion of 005; and (1) 2-5-019:013, comprising approximately 4.448 acres, to the Honolulu Watershed Forest Reserve, Tantalus, Honolulu, O'ahu (Exhibit I). This area was withdrawn from HWFR in 1952 for a radio station and utility purposes by EO 1503. Even though this area was formally withdrawn, it is being actively managed as FR by DOFAW, who is the primary user for forestry activities on these parcels, managing and maintaining access and the surrounding areas as part of the FR. DOFAW requests Board approval to add this area to the Honolulu Watershed Forest Reserve.

Proposed Withdrawals

City and County of Honolulu

At its meeting of December 12, 2014, under agenda item C-1, the Board approved in concept the withdrawal of TMKs (1) 1-4-018:001, 003, 006, 009, 010 and 011; (1) 1-4-018: portion of 012 through 016; (1) 1-4-020:013, 039, and 053; (1) 2-2-041:003, 008, and 013; (1) 2-2-054:002; (1) 2-2-055:001; (1) 2-9-051:002; (1) 2-9-054:010; (1) 2-9-055:002, 008, 009, and 013; (1) 2-9-057: portion of 006, 011, and 012; (1) 3-3-056:004; (1) 3-3-056: portion of 006; (1) 3-3-058:066 and 67; (1) 3-4-010:019; (1) 3-4-020: portion of 003; (1) 3-4-022:006; (1) 3-4-031:023; (1) 3-4-032:055; (1) 3-5-024:023 and 032; (1) 3-6-004: portion of 001 and 014; (1) 3-6-019: portion of 035 and 038, comprising

approximately 2428.256 acres, from the Honolulu Watershed Forest Reserve, Kalihi, Nu‘uanu, Pauoa, Mānoa, Pālolo, Wa‘ahila, Wai‘alae, Wailupe, Honolulu, O‘ahu (Exhibit J). Starting from information received from the City and County of Honolulu (TT102 parcel history sheets), the DOFAW Abstractor verified from information archived at the Department of Land and Natural Resources (DLNR) Bureau of Conveyances, that all of the TMKs listed above are owned by the City and County of Honolulu, the majority of which are managed more specifically by the Board of Water Supply. There is no documentation that these parcels were ever withdrawn from HWFR. To correct this oversight, DOFAW is seeking Board approval to withdraw these parcels from the Honolulu Watershed Forest Reserve.

Division of State Parks

At its meeting of December 12, 2014, under agenda item C-1, the Board approved in concept the withdrawal of TMKs (1) 1-4-014:001 and 026; (1) 1-4-016:003; (1) 1-9-007: portion of 001; and (1) 2-2-054: portion of 001 comprising approximately 100.779 acres, from the Honolulu Watershed Forest Reserve, Kalihi, Nu‘uanu, Honolulu, O‘ahu (Exhibit K, L). These parcels are currently managed by the Division of State Parks as Kalihi Valley State Park and Nu‘uanu Pali State Wayside. There is no documentation that these parcels were ever withdrawn from HWFR. To correct this oversight, DOFAW is seeking Board approval to withdraw these parcels from the Honolulu Watershed Forest Reserve.

Department of Hawaiian Home Lands

At its meeting of December 12, 2014, under agenda item C-1, the Board approved in concept the withdrawal of TMK (1) 2-5-019: portion of 016, comprising approximately 6.922 acres, from the Honolulu Watershed Forest Reserve, Makiki, Honolulu, O‘ahu (Exhibit M). This area was set aside under the Hawaiian Homes Commission Act as amended, in 1920, and is currently managed by the Department of Hawaiian Home Lands (DHHL). There is no documentation that this parcel was ever withdrawn from HWFR. To correct this oversight, DOFAW is seeking Board approval to withdraw this parcel from the Honolulu Watershed Forest Reserve.

DLNR Land Division

At its meeting of December 12, 2014, under agenda item C-1, the Board approved in concept the withdrawal of TMKs (1) 2-5-024: portion of 001 through 003; (1) 2-5-024:004 through 020; (1) 2-5-024: portion of 021 and 027; and (1) 2-5-024:028 through 033, comprising approximately 17.920 acres, from the Honolulu Watershed Forest Reserve, Tantalus, Honolulu, O‘ahu (Exhibit N). This area is currently managed by DLNR Land Division as the Maunalaha Residential Area. Residential areas are not consistent with the mission of DOFAW or the intent of the Forest Reserve System. There is no documentation that these parcels were withdrawn from HWFR. To correct this oversight, DOFAW is seeking Board approval to withdraw these parcels from the Honolulu Watershed Forest Reserve.

University of Hawai‘i at Mānoa

At its meeting of December 12, 2014, item C-1, the Board approved in concept the withdrawal of TMKs (1) 2-9-055: portion of 006 and (1) 2-9-055:007, comprising

approximately 142.184 acres, from the Honolulu Watershed Forest Reserve, Mānoa, Honolulu, O‘ahu (Exhibit O). Lyon Arboretum, which is managed by the University of Hawai‘i at Mānoa, is located on these parcels. There is no documentation that these parcels were ever withdrawn from HWFR. To correct this oversight, DOFAW is seeking Board approval to withdraw these parcels from the Honolulu Watershed Forest Reserve.

At its meeting of December 12, 2014, under agenda item C-1, the Board approved in concept the withdrawal of TMKs (1) 3-3-056:001 and 005, comprising approximately 38.114 acres, from the Honolulu Watershed Forest Reserve, Mānoa, Honolulu, O‘ahu (Exhibit P). The University of Hawai‘i at Mānoa currently manages these parcels, and there is no documentation that these parcels were ever withdrawn from HWFR. To correct this oversight, DOFAW is seeking Board approval to withdraw these parcels from the Honolulu Watershed Forest Reserve.

DLNR DOFAW

At its meeting of December 12, 2014, under agenda item C-1, the Board approved in concept the withdrawal of TMK(1) 2-5-019: portion of 003, comprising approximately 2.723 acres, from the Honolulu Watershed Forest Reserve, Tantalus, Honolulu, O‘ahu (Exhibit Q). This parcel was set-aside as part of HWFR in 1926, then subsequently set-aside as a part of Round Top Forest Reserve by EO 1669 in 1955. There is no documentation that this parcel was withdrawn from either FR. To correct this oversight, DOFAW is seeking Board approval to withdraw this parcel from the Honolulu Watershed Forest Reserve.

Honolulu Watershed Forest Reserve

The Hawaiian Humane Society acquired an undivided 52.018397% of TMKs (1) 3-7-004:001, 002, 020 and 021, approximately 680.846 acres of land located in Niu Valley in 1976 and 1982. The deeds that conveyed this interest provided that the lands “shall be used for the benefit of the public for the operation of an education preserve for flora and fauna, to be made accessible as an educational experience for the public under the control and administration of said Hawaiian Humane Society and its successors and assigns, and, if not used, then the State of Hawai‘i and its successors and assigns, for and as a public park.” This deed provision constitutes the State of Hawai‘i’s springing executory interest in the undivided partial interest in the lands that were at the time vested with Hawaiian Humane Society. The remaining undivided 49.9816032% was owned by Tiana Partners. In 2006, the Hawaiian Humane Society and Tiana Partners entered into a Memorandum of Understanding, which included an agreement to convey their combined 100% undivided interest in TMK (1) 3-7-004:002 (approximately 263.000 acres) to the State in exchange for the State’s undivided springing executory interest (52.018397% of TMKs (1) 3-7-004:001, 002, 020 and 021).

At its meeting on September 28, 2012, under agenda item D-6, the Board gave its final approval for the Niu land exchange, and also approved in concept the subsequent set aside of TMK (1) 3-7-004:002 to the Honolulu Watershed Forest Reserve, Niu, Honolulu, O‘ahu (Exhibit R). The parcel proposed for addition contains important watershed and native habitat area, including an existing endangered plant exclosure. It also abuts existing FR on its east and west boundary.

Adding adjacent lands to the FR improves management across the landscape, and affords it the protection provided by the rules and statutes of the Forest Reserve System. With the land exchange being finalized on May 3, 2013, DOFAW is requesting Board approval to add TMK (1) 3-7-004:002 (approximately 263.000 acres) to the Honolulu Watershed Forest Reserve.

Wai‘anae Kai Forest Reserve

At its meeting on December 12, 2014, under agenda item C-1, the Board approved in concept the addition of State-owned parcel, TMK (1) 8-5-006:005, comprising approximately 300.000 acres, to the Wai‘anae Kai Forest Reserve, Wai‘anae, Honolulu, O‘ahu (Exhibit S). On July 27, 1950, the Board of Commissioners of Agriculture and Forestry adopted Resolution 10.1 to add this parcel back into Waianae Kai FR. DOFAW has been actively managing this area as FR for the last 60 years. Despite this, documentation that an EO was issued pursuant to Resolution 10.1 could not be found after comprehensive research. To correct this oversight, DOFAW is requesting Board approval to add TMK (1) 8-5-006:005, (approximately 300.00 acres) to the Wai‘anae Kai Forest Reserve.

Waimānalo Forest Reserve

At its meeting on March 13, 2009, under agenda item D-5, the Board approved in concept the addition of State-owned parcel, TMK (1) 4-2-010: portion of 001, comprising approximately 1,544 acres, to the Waimānalo Forest Reserve, Waimānalo, Honolulu, O‘ahu (Exhibit T). DOFAW conducted a public hearing on May 26, 2009, and obtained Board approval for the issuance of an EO for this addition on August 28, 2009, under agenda item C-5. Subsequently, DOFAW identified a discrepancy in the acreage of the proposed addition. It was incorrectly recorded as 1,544 acres in all of the necessary documentation, including Board submittals and public hearing materials. The correct acreage is 1,744.538 acres. At its meeting on January 9, 2015, under agenda item D-7, the Board amended its prior action of March 13, 2009, item D-5, by changing any reference in the submittal regarding the area of TMK (1) 4-2-010: portion of 001 in the proposed set aside to read “1744.538 acres more or less”, and authorized DOFAW to conduct a public hearing, which was held on March 4, 2015, with the corrected information. DOFAW requests approval to add TMK (1) 4-2-010: portion 001 (approximately 1,744.538 acres) to the Waimānalo Forest Reserve.

DISCUSSION:

Approval to hold a public hearing for all of the proposed FR additions and withdrawals described above was obtained from the Board of Land and Natural Resources on September 28, 2012, item D-6; December 12, 2014, item C-1; and January 9, 2015, item D-7. Approval to hold the public hearing and to appoint Ryan Peralta, Forest Management Supervisor I, as the Hearing Officer was obtained from the Chairperson on January 21, 2015.

On February 15, 2015, a Notice of Public Hearing was published in the Sunday editions of the Garden Island, Honolulu Star-Advertiser, Maui News, West Hawai‘i Today, and Hawai‘i Tribune-Herald newspapers, for a public hearing that was held on March 4, 2015, to receive public input on the subject items.

No members of the public attended the public hearing, the proceedings of which are summarized in the attached Hearing Officer's report (Exhibit U). No verbal or written testimony was received regarding these items during or after the meeting.

Following the public hearing, DOFAW found discrepancies in the acreage listed in Exhibit A of the December 12, 2014, item C-1 Board submittal in which DOFAW obtained approval in concept from the Board for the proposed HWFR boundary modification. There were four TMKs with incorrect acreages and the reasons for the discrepancies are described in the table below:

TMK	Action	Incorrect acreages from Exhibit A of the 12/12/14 Board submittal	Correct acreages	Explanation of discrepancy
2-9-031:por 002	Add	7.609	11.020	The acreage was correct in the narrative of the board submittal; Exhibit A had a preliminary acreage which staff failed to update when more accurate information became available.
1-9-007:por 001	Withdraw	5.054	0.505	The acreage was incorrectly noted as 5.054 acres in Exhibit A due to a decimal place error.
3-3-058:066	Withdraw	0.292	0.666	The acreages of parcels 066 and 067 were inadvertently switched in Exhibit A.
3-3-058:067	Withdraw	0.666	0.292	The acreages of parcels 066 and 067 were inadvertently switched in Exhibit A.

All maps in the December 12, 2014, Board submittal and those used for the public hearing accurately depicted the proposed changes to HWFR. The acreages in the narratives of both the Board submittal and public hearing documents were also correct, except for the total acreages (which were calculated using Exhibit A of the December 12, 2014, item C-1 Board submittal). The difference in acreage and percentage change is shown in the table below:

Action	Incorrect total acreage in 12/12/14 Board submittal	Correct total acreage	Difference in acreage	Percent change
Additions	124.287	127.818	+3.531	2.84%
Withdrawals	2741.215	2736.898	-4.317	0.16%

DOFAW believes that the error in acreage was minor (percent change less than 3% of the total acreage), and would not have changed the outcome of the public hearing. Given that no public testimony was received, and that DOFAW views these errors as non-substantive, DOFAW recommends proceeding with the final processing of the proposed transfers.

CHAPTER 343 – ENVIRONMENTAL ASSESSMENT:

This action before the Board is merely a transfer of management jurisdiction and does not constitute a use of State lands or funds, and therefore, this action does not trigger the provisions of Chapter 343, HRS, relating to environmental impact statements. Inasmuch as the Chapter 343, HRS, environmental requirements apply to the Applicants use of the lands, the Applicants shall be responsible for compliance with Chapter 343, HRS, as amended.

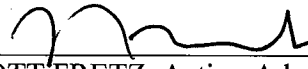
RECOMMENDATION:

That the Board:

- 1) Accept and approve the Hearing Officer's report and minutes for the public hearing held on March 4, 2015, for the four proposed additions and one proposed withdrawal from the Forest Reserve System on the island of O'ahu.
- 2) Approve of and recommend to the Governor issuance of an executive order setting aside Tax Map Keys (1) 2-2-053: portion of 001; (1) 2-2-053:002 and 003; (1) 2-5-010: portions of 001 and 003; (1) 2-5-019: portion of 005; (1) 2-5-019:013; (1) 2-9-031: portion of 002; (1) 2-9-049:004; and (1) 3-4-033:001, comprising approximately 127.818 acres, to Honolulu Watershed Forest Reserve, Pauoa, Mānoa, Tantalus, and Pālolo, Honolulu, O'ahu.
- 3) Approve of and recommend to the Governor issuance of an executive order to withdraw Tax Map Keys (1) 1-4-014:001 and 026; (1) 1-4-016:003; (1) 1-4-018:001, 003, 006, 009, 010, and 011; (1) 1-4-018: portions of 012 through 016; (1) 1-4-020:013, 039, and 053; (1) 1-9-007: portion of 001; (1) 2-2-041:003, 008, and 013; (1) 2-2-054: portion of 001; (1) 2-2-054:002; (1) 2-2-055:001; (1) 2-5-019: portions of 003 and 016; (1) 2-5-024: portions of 001 through 003; (1) 2-5-024:004 through 020; (1) 2-5-024: portion of 021 and 027; (1) 2-5-024:028 through 033; (1) 2-9-051:002; (1) 2-9-054:010; (1) 2-9-055:002; (1) 2-9-055: portion of 006; (1) 2-9-055:007, 008, 009, and 013; (1) 2-9-057: portions of 006, 011, and 012; (1) 3-3-056:001, 004, and 005; (1) 3-3-056: portion of 006; (1) 3-3-058:066 and 067; (1) 3-4-010:019; (1) 3-4-020: portion of 003; (1) 3-4-022:006; (1) 3-4-031:023; (1) 3-4-032:055; (1) 3-5-024:023 and 032; (1) 3-6-004: portions of 001 and 014; (1) 3-6-019: portions of 035 and 038, comprising approximately 2,736.898 acres, from Honolulu Watershed Forest Reserve, Kalihi, Nu'uuanu, Pauoa, Mānoa, Tantalus, Makiki, and Wa'ahila, Honolulu, O'ahu.
- 4) Approve of and recommend to the Governor issuance of an executive order setting aside Tax Map Key (1) 3-7-004:002, comprising approximately 263.000 acres, to Honolulu Watershed Forest Reserve, Niu, Honolulu, O'ahu.
- 5) Approve of and recommend to the Governor issuance of an executive order setting aside Tax Map Key (1) 8-5-006:005, comprising approximately 300.000 acres, to Wai'anae Kai Forest Reserve, Wai'anae, Honolulu, O'ahu.
- 6) Approve of and recommend to the Governor issuance of an executive order setting aside Tax Map Key (1) 4-2-010: portion of 001, comprising approximately 1,744.538 acres, to Waimānalo Forest Reserve, Waimānalo, Honolulu, O'ahu.
- 7) Recommendation Nos. 2 through 6 are further made subject to the following:

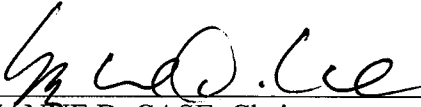
- a. The standard terms and conditions of the most current executive order form, as may be amended from time to time;
- b. Disapproval by the Legislature by two-thirds vote of either the House of Representatives or the Senate or by a majority vote by both in any regular or special session next following the date of the setting aside;
- c. Review and approval by the Department of the Attorney General; and
- d. Such other terms and conditions as may be prescribed by the Chairperson to best serve the interests of the State.

Respectfully submitted,



SCOTT FRETZ, Acting Administrator
Division of Forestry and Wildlife

APPROVED FOR SUBMITTAL:



SUZANNE D. CASE, Chairperson
Board of Land and Natural Resources

Exhibit A

Tax Map Key	Location	Area (ac), more or less	State Land Use	LUO	Trust Land Status	Proposed Action
Honolulu Watershed Forest Reserve						
1-4-014:001	Honolulu	57.393	Conservation	P-1	Acquired after 8/59	Withdraw
1-4-014:026	Honolulu	21.067	Urban	P-2	Acquired after 8/59	Withdraw
1-4-016:003	Honolulu	21.186	Urban	P-2	Acquired after 8/59	Withdraw
1-4-018:001	Honolulu	540.964	Conservation	P-1		Withdraw
1-4-018:003	Honolulu	95.551	Conservation	P-1		Withdraw
1-4-018:006	Honolulu	287.309	Conservation	P-1		Withdraw
1-4-018009	Honolulu	155.076	Conservation	P-1		Withdraw
1-4-018:010	Honolulu	67.288	Conservation	P-1		Withdraw
1-4-018:011	Honolulu	11.194	Conservation	P-1		Withdraw
1-4-018:012 por	Honolulu	55.471	Conservation	P-1		Withdraw
1-4-018:013 por	Honolulu	5.734	Conservation	P-1		Withdraw
1-4-018:014 por	Honolulu	4.744	Conservation	P-1		Withdraw
1-4-018:015 por	Honolulu	9.193	Conservation	P-1		Withdraw
1-4-018:016 por	Honolulu	15.440	Conservation	P-1		Withdraw
1-4-020:013	Honolulu	1.614	Urban	R-10		Withdraw
1-4-020:039	Honolulu	2.068	Urban	R-10		Withdraw
1-4-020:053	Honolulu	2.268	Urban	R-10		Withdraw
1-9-007:001 por	Honolulu	0.505	Conservation	P-1	5(b)	Withdraw
2-2-041:003	Honolulu	36.405	Conservation	P-1		Withdraw
2-2-041:008	Honolulu	16.510	Conservation	P-1		Withdraw
2-2-041:013	Honolulu	1.021	Conservation	P-1		Withdraw
2-2-053:001 por	Honolulu	8.178	Conservation	P-1	5(b)	Add
2-2-053:002	Honolulu	6.290	Conservation	P-1	5(b)	Add
2-2-053:003	Honolulu	34.820	Conservation	P-1	5(b)	Add
2-2-054:001 por	Honolulu	0.628	Conservation	P-1	5(b)	Withdraw
2-2-054:002	Honolulu	197.520	Conservation	P-1		Withdraw
2-2-055:001	Honolulu	2.917	Conservation	P-1		Withdraw
2-5-010:001 por	Honolulu	54.199	Conservation	P-1	5(b)	Add
2-5-010:003 por	Honolulu	0.606	Conservation	P-1	5(b)	Add
2-5-019:003 por	Honolulu	2.723	Conservation	P-1	5(b)	Withdraw
2-5-019:005 por	Honolulu	0.120	Conservation	P-1	5(b)	Add
2-5-019:013	Honolulu	4.328	Conservation	P-1	5(b)	Add
2-5-019:016 por	Honolulu	6.922	Conservation	P-1	5(b)	Withdraw
2-5-024:001 por	Honolulu	0.530	Conservation	P-1	5(b)	Withdraw
2-5-024:002 por	Honolulu	0.397	Urban	P-1	5(b)	Withdraw
2-5-024:003 por	Honolulu	0.256	Urban	P-1	5(b)	Withdraw
2-5-024:004	Honolulu	0.360	Urban	P-1	5(b)	Withdraw
2-5-024:005	Honolulu	1.450	Urban	P-1	5(b)	Withdraw
2-5-024:006	Honolulu	0.360	Urban	P-1	5(b)	Withdraw
2-5-024:007	Honolulu	0.440	Urban	P-1	5(b)	Withdraw
2-5-024:008	Honolulu	0.520	Urban	P-1	5(b)	Withdraw
2-5-024:009	Honolulu	0.240	Urban	P-1	5(b)	Withdraw
2-5-024:010	Honolulu	0.910	Urban	P-1	5(b)	Withdraw
2-5-024:011	Honolulu	0.220	Urban	P-1	5(b)	Withdraw
2-5-024:012	Honolulu	1.460	Urban	P-1	5(b)	Withdraw
2-5-024:013	Honolulu	1.040	Urban	P-1	5(b)	Withdraw
2-5-024:014	Honolulu	1.140	Urban	P-1	5(b)	Withdraw
2-5-024:015	Honolulu	1.080	Urban	P-1	5(b)	Withdraw
2-5-024:016	Honolulu	0.820	Urban	P-1	5(b)	Withdraw

2-5-024:017	Honolulu	0.930	Urban	P-1	5(b)	Withdraw
2-5-024:018	Honolulu	0.700	Urban	P-1	5(b)	Withdraw
2-5-024:019	Honolulu	0.640	Urban	P-1	5(b)	Withdraw
2-5-024:020	Honolulu	0.490	Urban	P-1	5(b)	Withdraw
2-5-024:021 por	Honolulu	0.399	Urban	P-1	5(b)	Withdraw
2-5-024:027 por	Honolulu	0.278	Urban	P-1	5(b)	Withdraw
2-5-024:028	Honolulu	0.640	Urban	P-1	5(b)	Withdraw
2-5-024:029	Honolulu	0.820	Urban	P-1	5(b)	Withdraw
2-5-024:030	Honolulu	0.860	Urban	P-1	5(b)	Withdraw
2-5-024:031	Honolulu	0.400	Urban	P-1	5(b)	Withdraw
2-5-024:032	Honolulu	0.350	Urban	P-1	5(b)	Withdraw
2-5-024:033	Honolulu	0.190	Urban	P-1	5(b)	Withdraw
2-9-031:002 por	Honolulu	11.020	Conservation	P-1	5(b)	Add
2-9-049:004	Honolulu	4.657	Conservation	P-1	5(b)	Add
2-9-051:002	Honolulu	52.130	Conservation	P-1		Withdraw
2-9-054:010	Honolulu	0.850	Conservation	P-1		Withdraw
2-9-055:002	Honolulu	74.000	Conservation	P-1		Withdraw
2-9-055:006 por	Honolulu	72.684	Conservation	P-1	Acquired after 8/59	Withdraw
2-9-055:007	Honolulu	69.500	Conservation	P-1	Acquired after 8/59	Withdraw
2-9-055:008	Honolulu	70.000	Conservation	P-1		Withdraw
2-9-055:009	Honolulu	1.860	Conservation	P-1		Withdraw
2-9-055:013	Honolulu	8.434	Conservation	P-1		Withdraw
2-9-057:006 por	Honolulu	0.191	Urban	R-7.5		Withdraw
2-9-057:011 por	Honolulu	0.178	Urban	R-7.5		Withdraw
2-9-057:012 por	Honolulu	0.184	Urban	R-7.5		Withdraw
3-3-056:001	Honolulu	34.044	Urban	R-5/P-2/P-1	5(b)	Withdraw
3-3-056:004	Honolulu	10.513	Conservation, Urban	R-5/P-1/P-2		Withdraw
3-3-056:005	Honolulu	4.070	Urban	P-1/P-2	5(b)	Withdraw
3-3-056:006 por	Honolulu	6.641	Urban	P-1/P-3		Withdraw
3-3-058:066	Honolulu	0.666	Urban	R-5		Withdraw
3-3-058:067	Honolulu	0.292	Urban	R-5		Withdraw
3-4-010:019	Honolulu	5.725	Conservation	P-1		Withdraw
3-4-020:003 por	Honolulu	10.391	Conservation	P-1		Withdraw
3-4-022:006	Honolulu	367.671	Conservation	P-1		Withdraw
3-4-031:023	Honolulu	1.324	Urban	R-5		Withdraw
3-4-032:055	Honolulu	0.731	Urban	R-5		Withdraw
3-4-033:001	Honolulu	3.600	Conservation	P-1	5(b)	Add
3-5-024:023	Honolulu	0.292	Conservation	P-1		Withdraw
3-5-024:032	Honolulu	1.084	Conservation	P-1		Withdraw
3-6-004:001 por	Honolulu	44.125	Urban	P-2		Withdraw
3-6-004:014 por	Honolulu	261.231	Conservation	P-1		Withdraw
3-6-019:035 por	Honolulu	1.186	Urban	R-7.5		Withdraw
3-6-019:038 por	Honolulu	0.270	Urban	R-7.5		Withdraw

Honolulu Watershed Forest Reserve						
--	--	--	--	--	--	--

3-7-004:002	Honolulu	263.000	Conservation	P-1	Acquired after 8/59	Add
-------------	----------	---------	--------------	-----	---------------------	-----

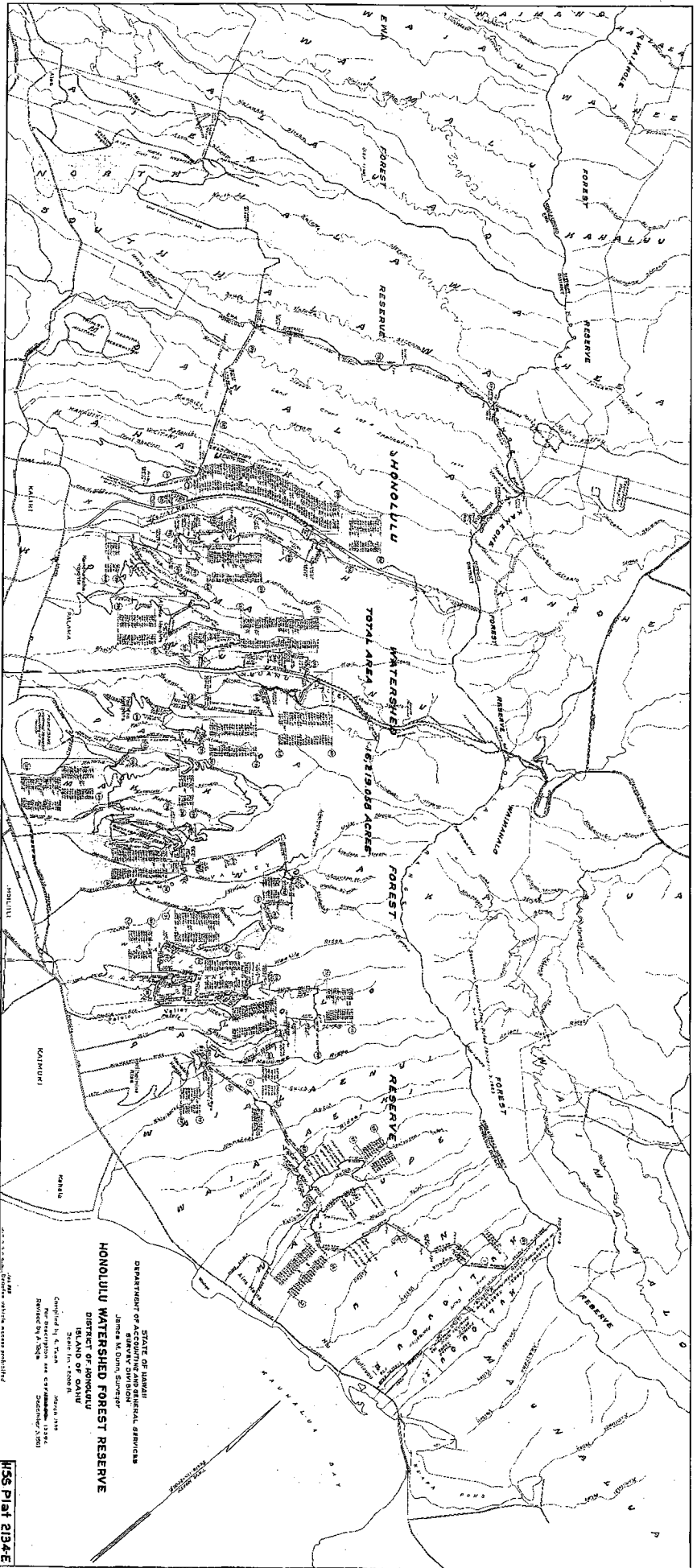
Wai'anae Kai Forest Reserve						
------------------------------------	--	--	--	--	--	--

8-5-006:005	Wai'anae	300.000	Conservation	P-1	5(b)	Add
-------------	----------	---------	--------------	-----	------	-----

Waiamānalo Forest Reserve						
----------------------------------	--	--	--	--	--	--

4-2-010:001 por	Waiamānalo	1744.538	Conservation	P-1	Acquired after 8/59	Add
-----------------	------------	----------	--------------	-----	---------------------	-----

Exhibit C - Plat 2134 E

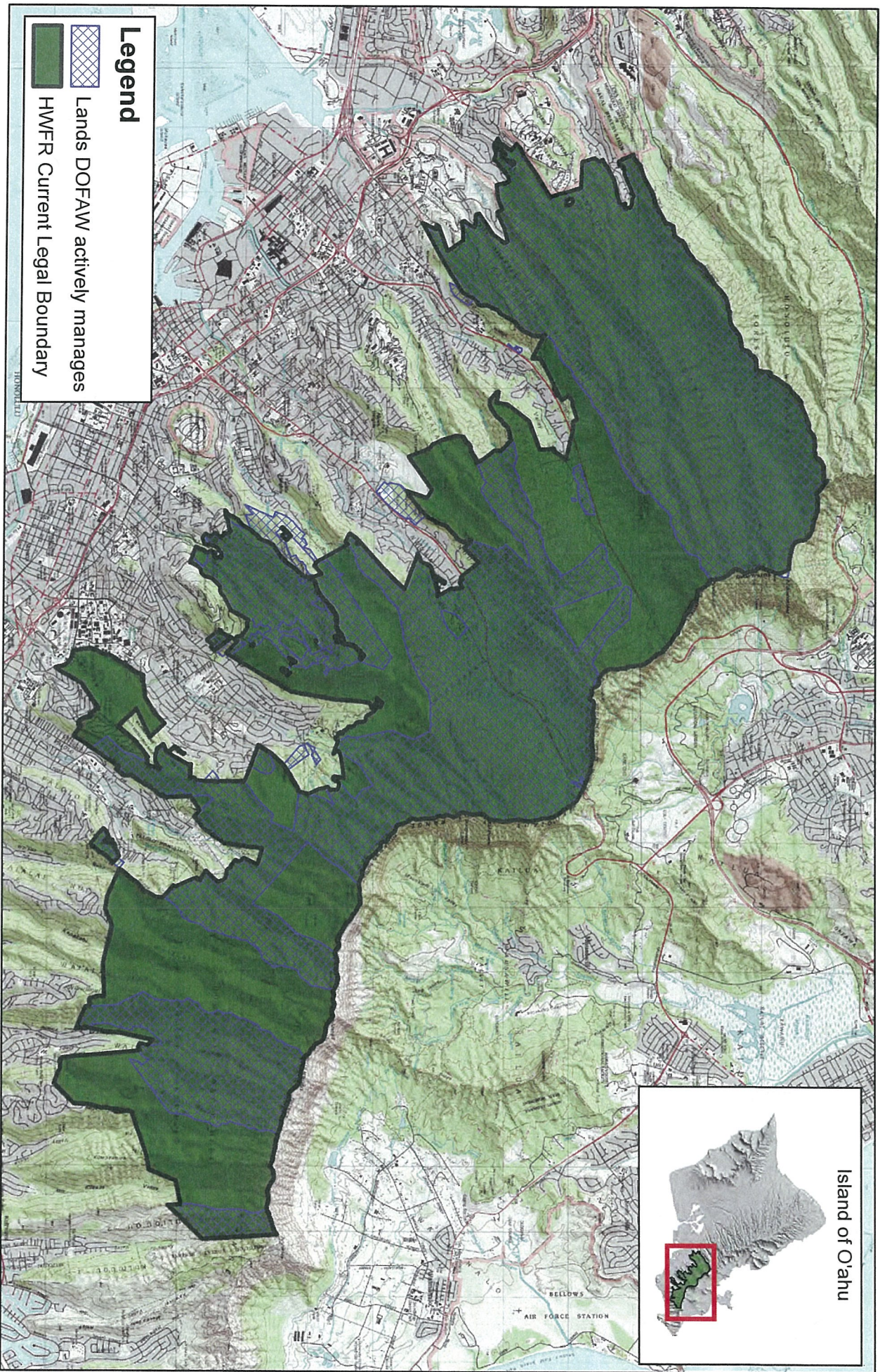


Map not reduced to scale

STATE OF HAWAII
DEPARTMENT OF AGRICULTURE AND FORESTRY
James M. Dunn, Director
DISTRICT OF HONOLULU
ISLAND OF OAHU
Compiled by K. S. ...
Checked by ...
Approved by ...
1938

HSS Plat 2134 E
File in C-1298

Exhibit D - Boundary Comparison



Legend

-  Lands DOFAW actively manages
-  HWFR Current Legal Boundary

State of Hawai'i

Department of Land and Natural Resources

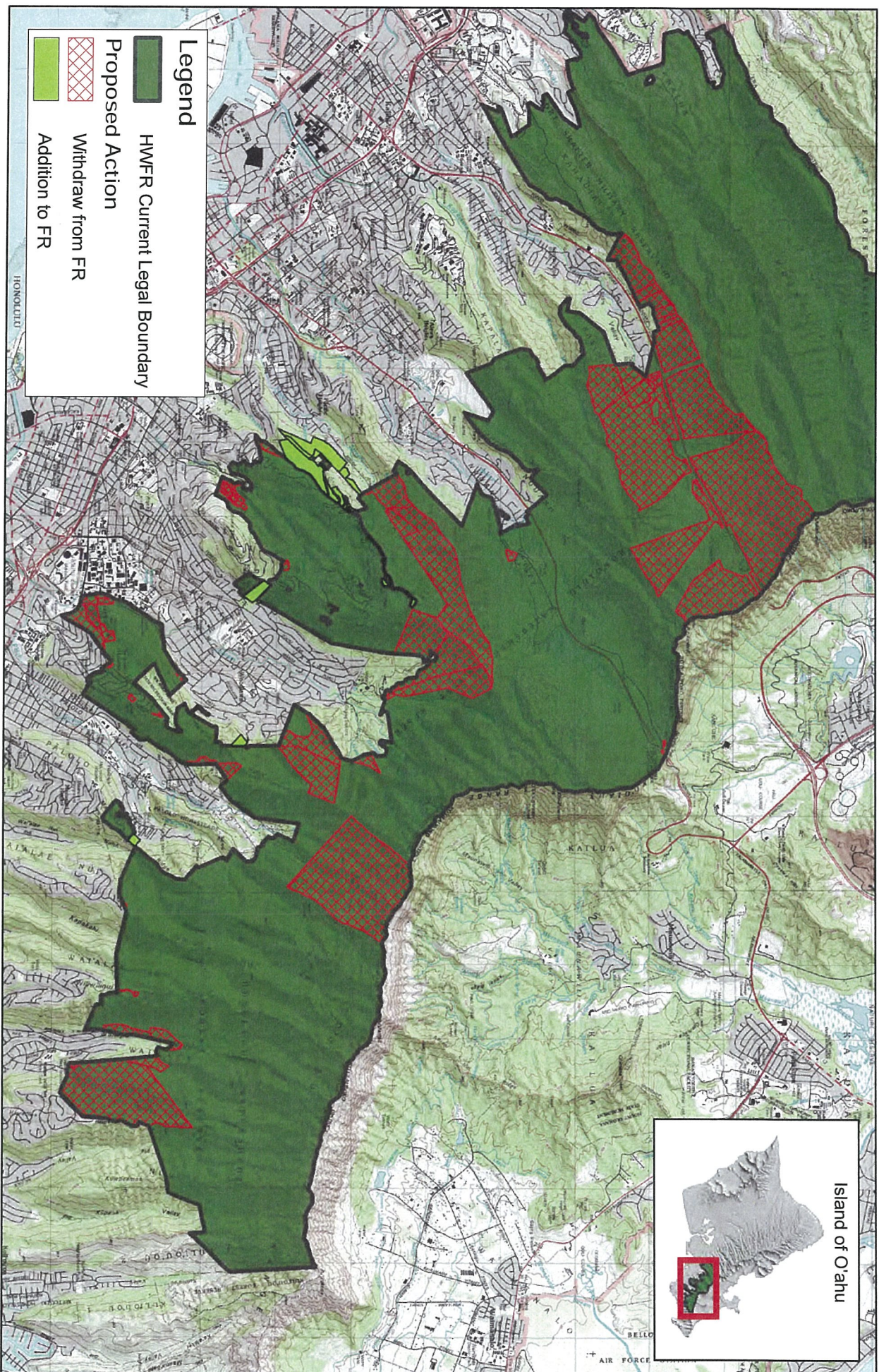
Division of Forestry and Wildlife

(808) 587-0160

April 2015



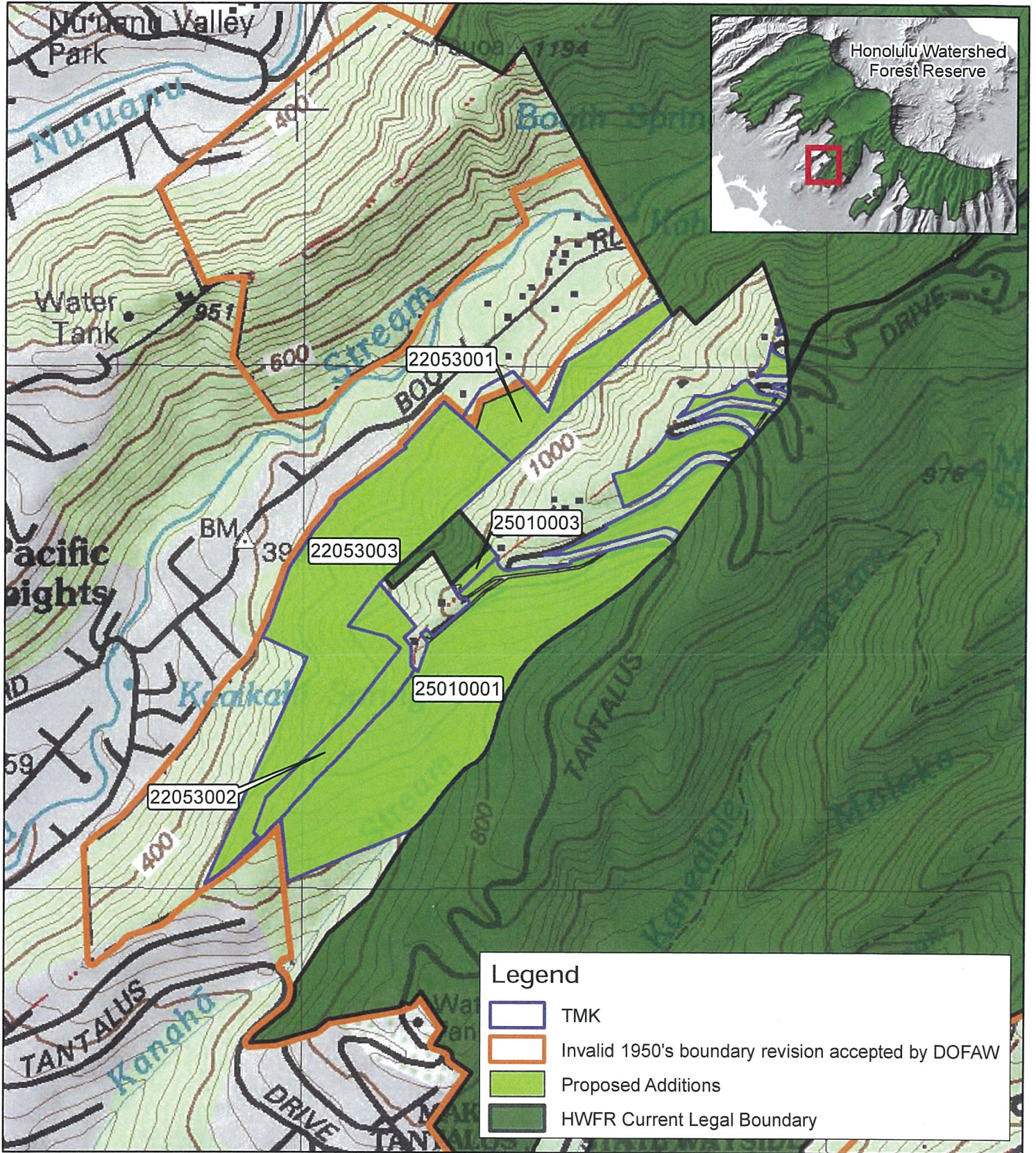
Exhibit E - Proposed Additions and Withdrawals from Honolulu Watershed Forest Reserve



State of Hawaii
Department of Land and Natural Resources
Division of Forestry and Wildlife
(808) 587-0166
April 2015



Exhibit F - Proposed Additions to Honolulu Watershed Forest Reserve (Pauoa)



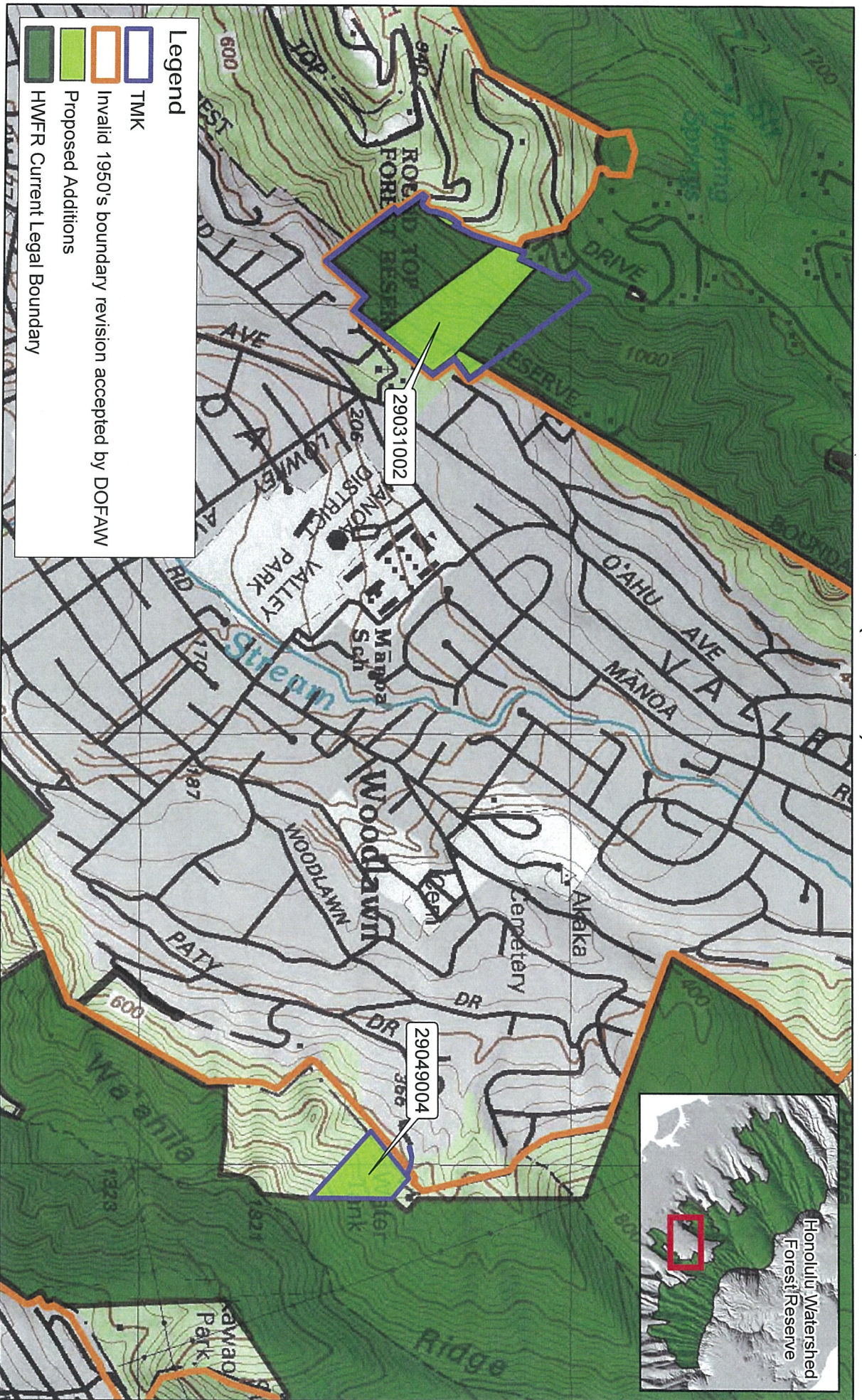
State of Hawai'i
 Department of Land and Natural Resources
 Division of Forestry and Wildlife
 (808) 587-0166
 April 2015



0 0.05 0.1 0.2
 Miles



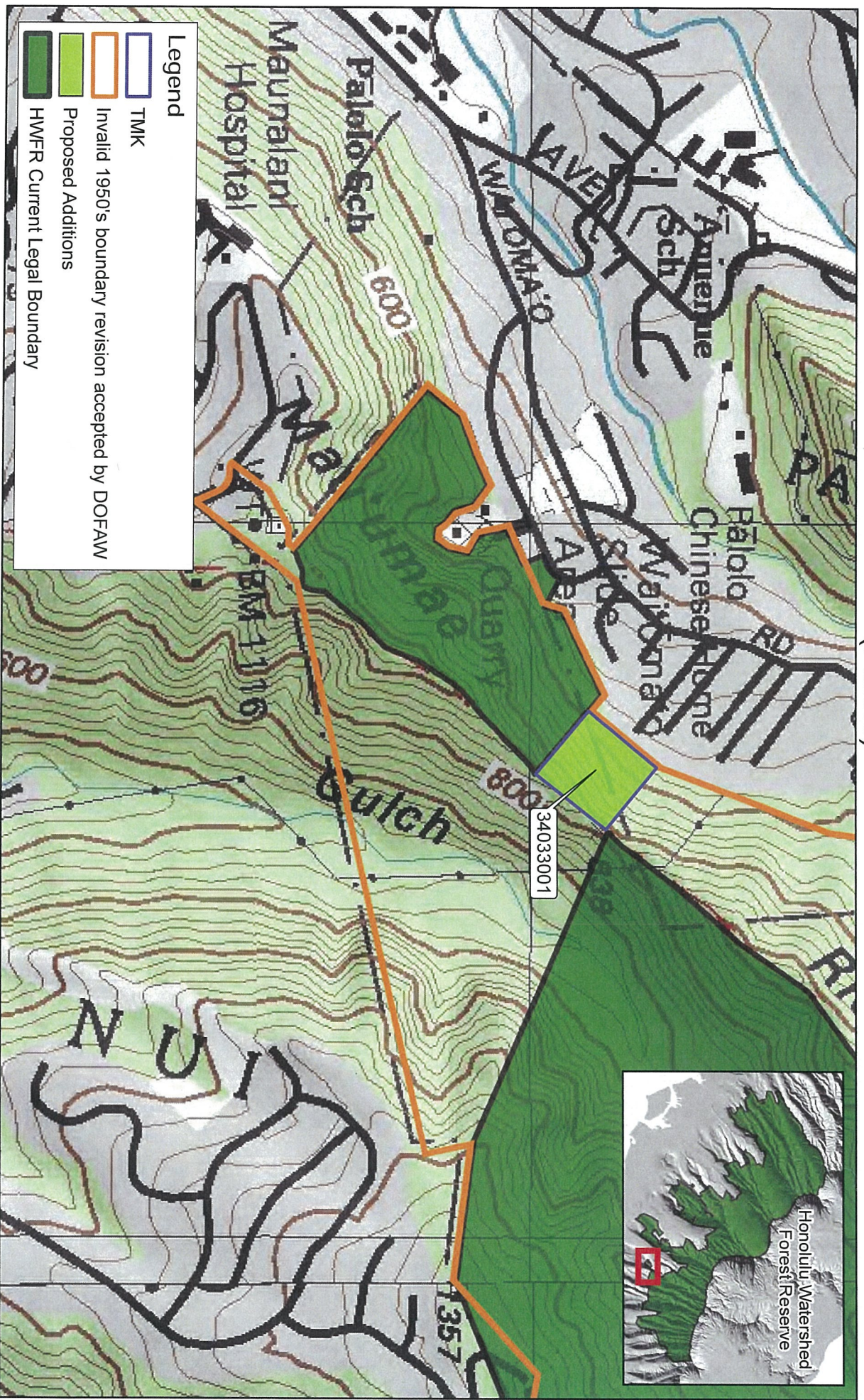
Exhibit G - Proposed Additions to Honolulu Watershed Forest Reserve (Mānoa)



State of Hawai'i
 Department of Land and Natural Resources
 Division of Forestry and Wildlife
 (808) 587-0166
 April 2015



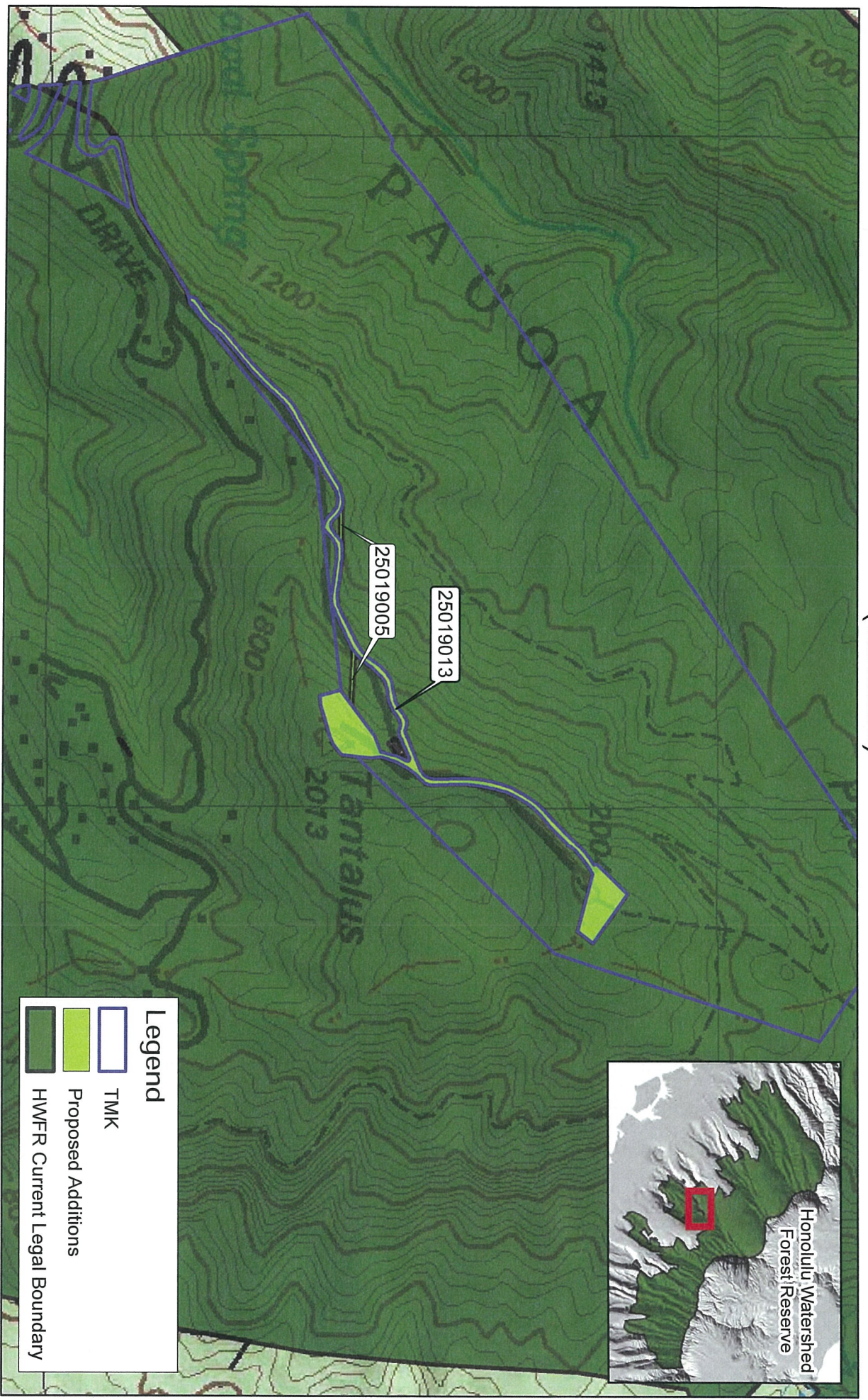
Exhibit H - Proposed Additions to Honolulu Watershed Forest Reserve (Pāloalo)



State of Hawaii
 Department of Land and Natural Resources
 Division of Forestry and Wildlife
 (808) 587-0166
 April 2015



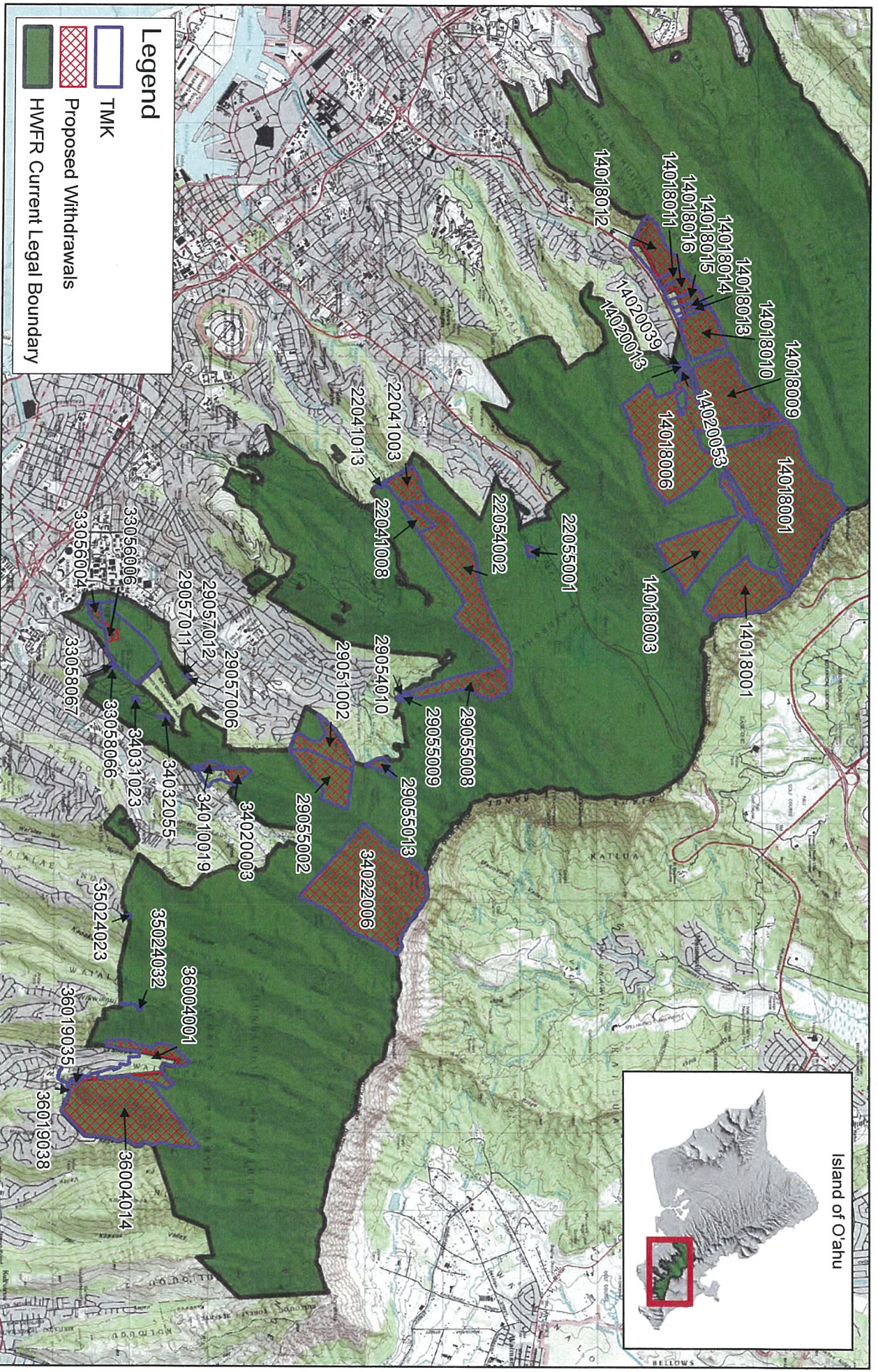
Exhibit I - Proposed Additions to Honolulu Watershed Forest Reserve (Tantalus)



State of Hawai'i
Department of Land and Natural Resources
Division of Forestry and Wildlife
(808) 587-0166
April 2015



Exhibit J - Proposed Withdrawals of County Parcels from the Honolulu Watershed Forest Reserve

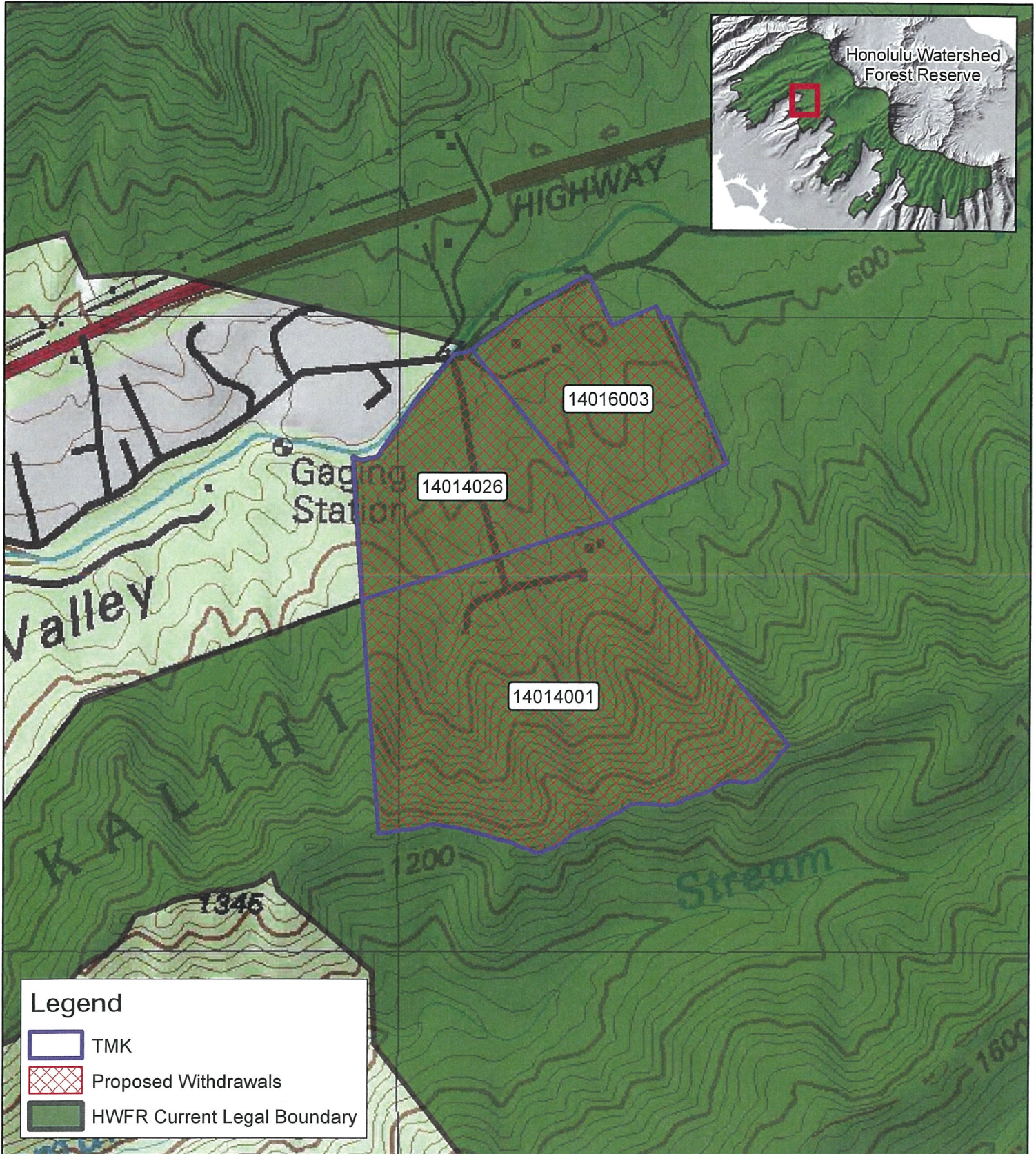


State of Hawaii
 Department of Land and Natural Resources
 Division of Forestry and Wildlife
 (808) 587-0166
 April 2015



HAWAII STATEWIDE GIS PROGRAM
 HAWAII STATE OFFICE OF PLANNING

Exhibit K - Proposed Withdrawals from the Honolulu Watershed Forest Reserve (Kalihi Valley State Park)



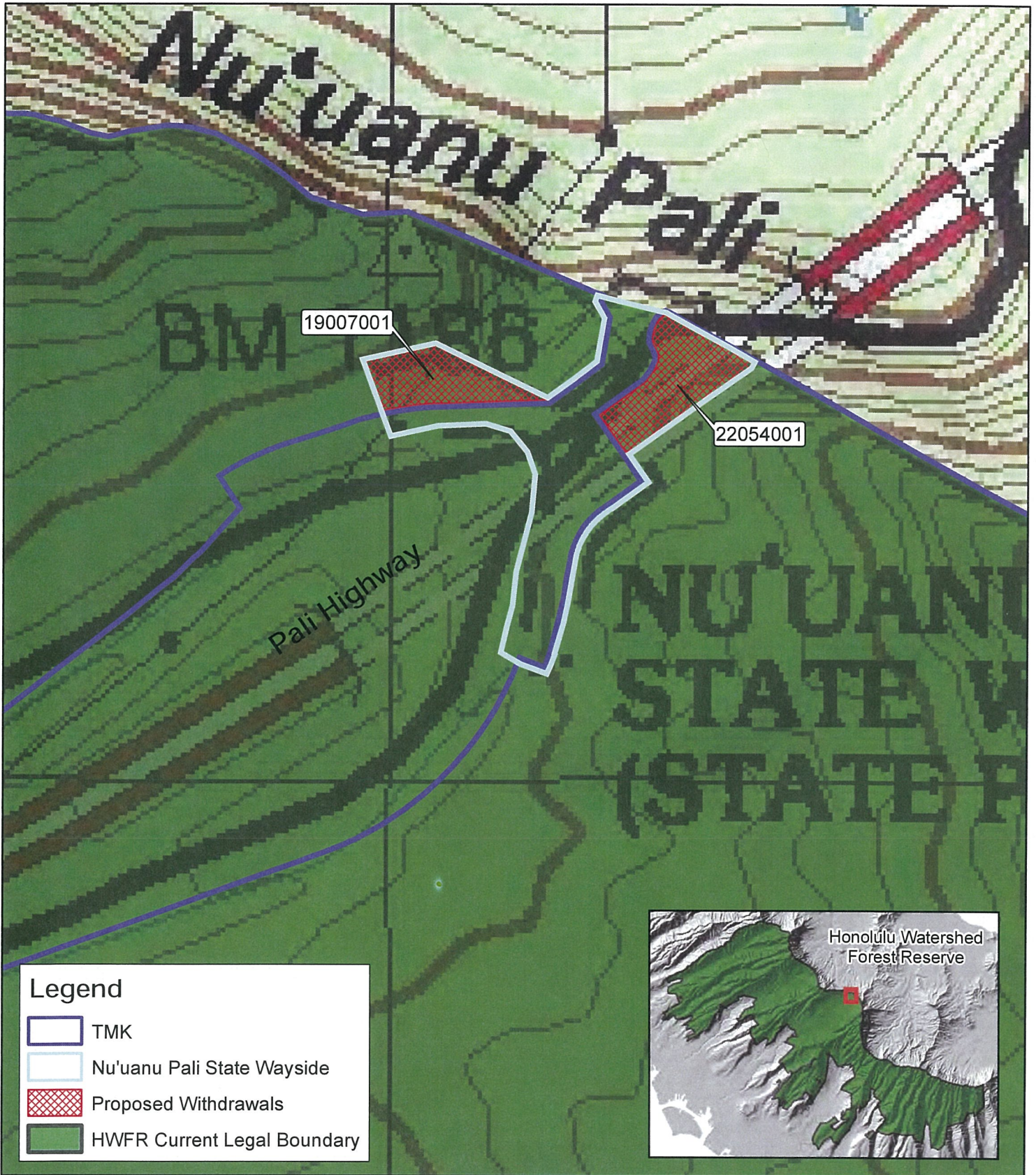
State of Hawai'i
 Department of Land and Natural Resources
 Division of Forestry and Wildlife
 (808) 587-0166
 April 2015



0 0.05 0.1 0.2
 Miles



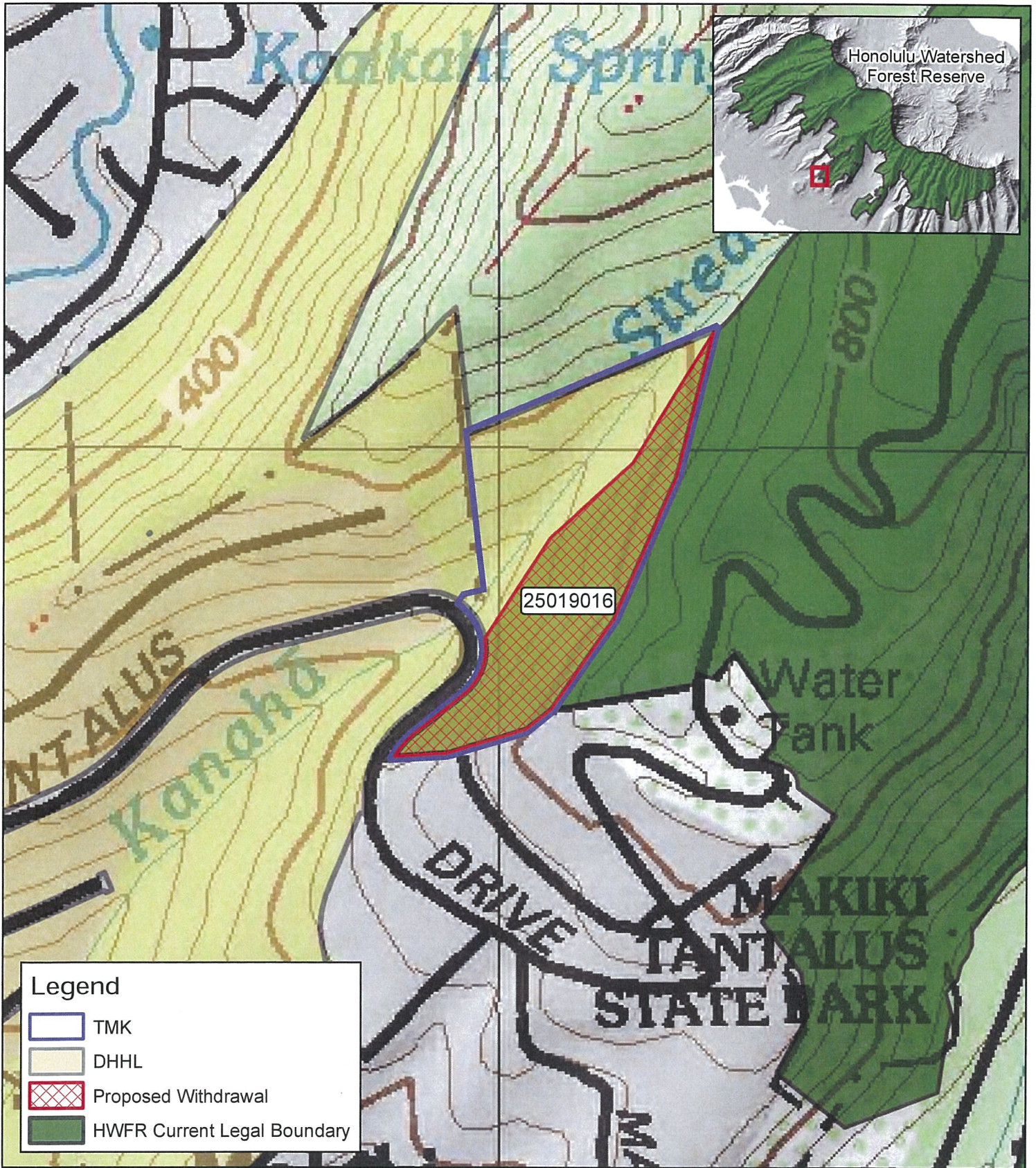
Exhibit L - Proposed Withdrawals from the Honolulu Watershed Forest Reserve (Nu'uuanu Pali State Wayside)



State of Hawai'i
 Department of Land and Natural Resources
 Division of Forestry and Wildlife
 (808) 587-0166
 April 2015



Exhibit M - Proposed Withdrawals from the Honolulu Watershed Forest Reserve (Makiki DHHL)



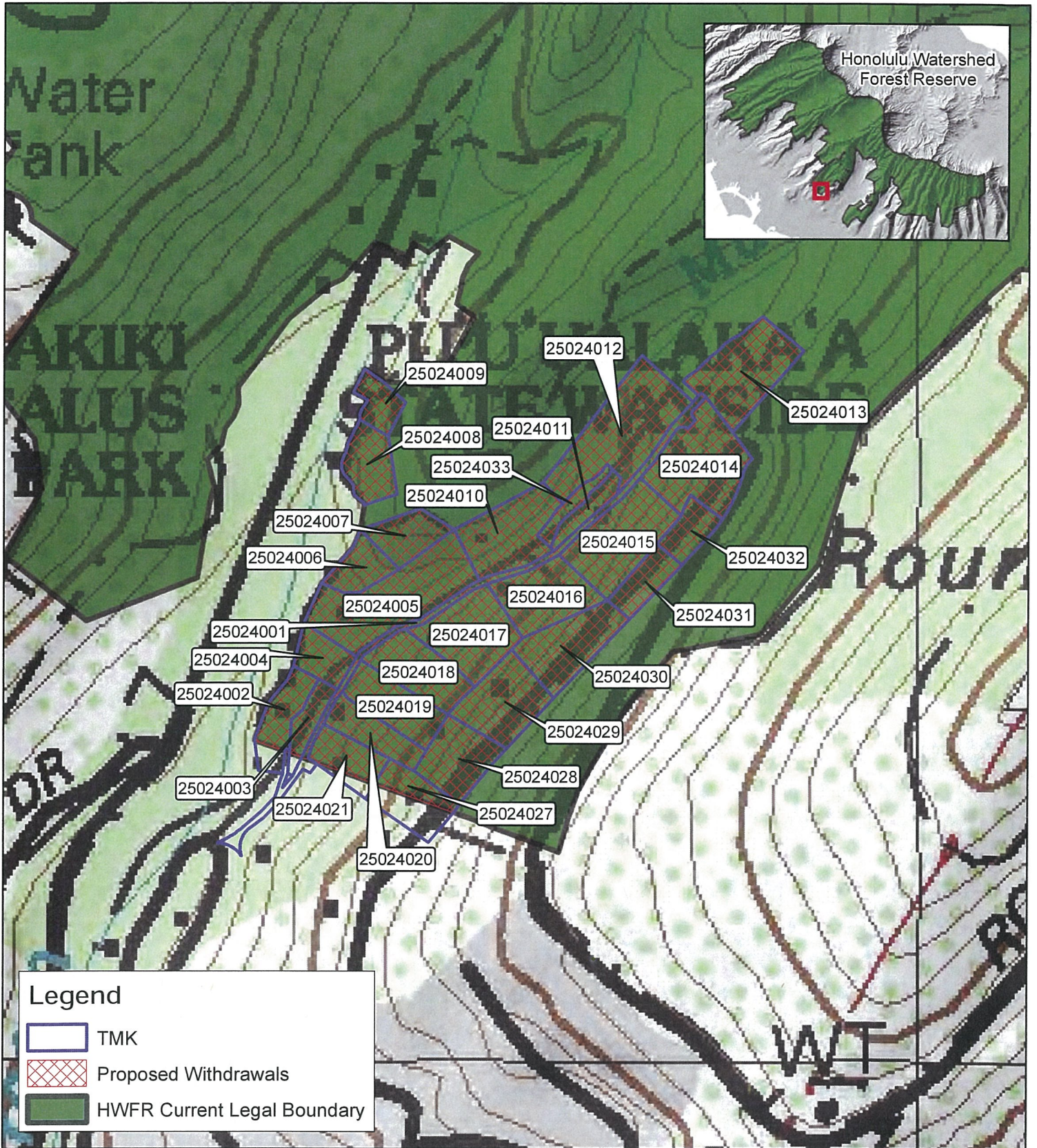
State of Hawai'i
 Department of Land and Natural Resources
 Division of Forestry and Wildlife
 (808) 587-0166
 April 2015



0 0.05 0.1 0.2 Miles



Exhibit N - Proposed Withdrawals from Honolulu Watershed Forest Reserve (Maunaloa Residential Area)



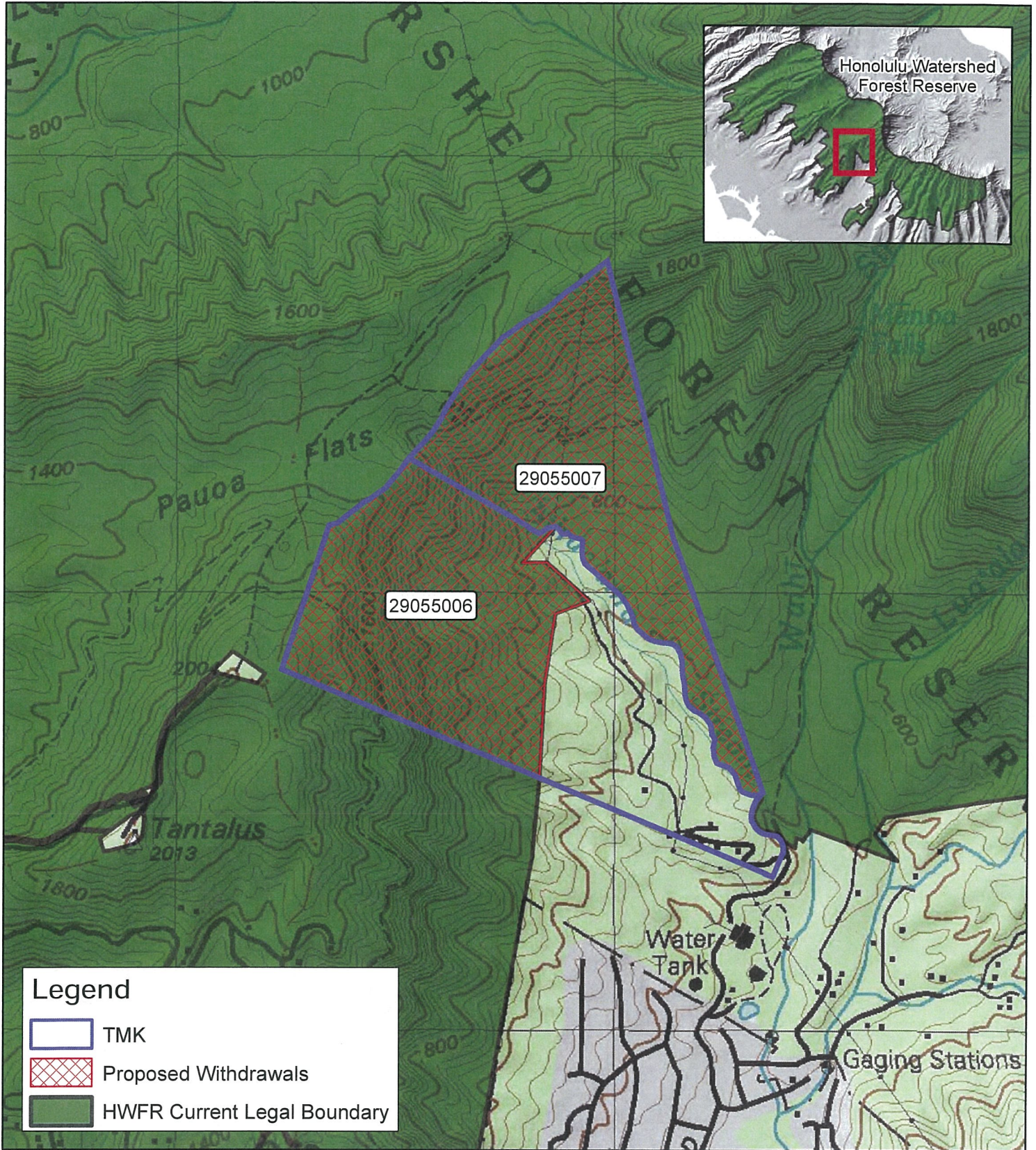
State of Hawai'i
 Department of Land and Natural Resources
 Division of Forestry and Wildlife
 (808) 587-0166
 April 2015



0 0.025 0.05 0.1
 Miles



Exhibit O - Proposed Withdrawals from the Honolulu Watershed Forest Reserve (Lyon Arboretum)



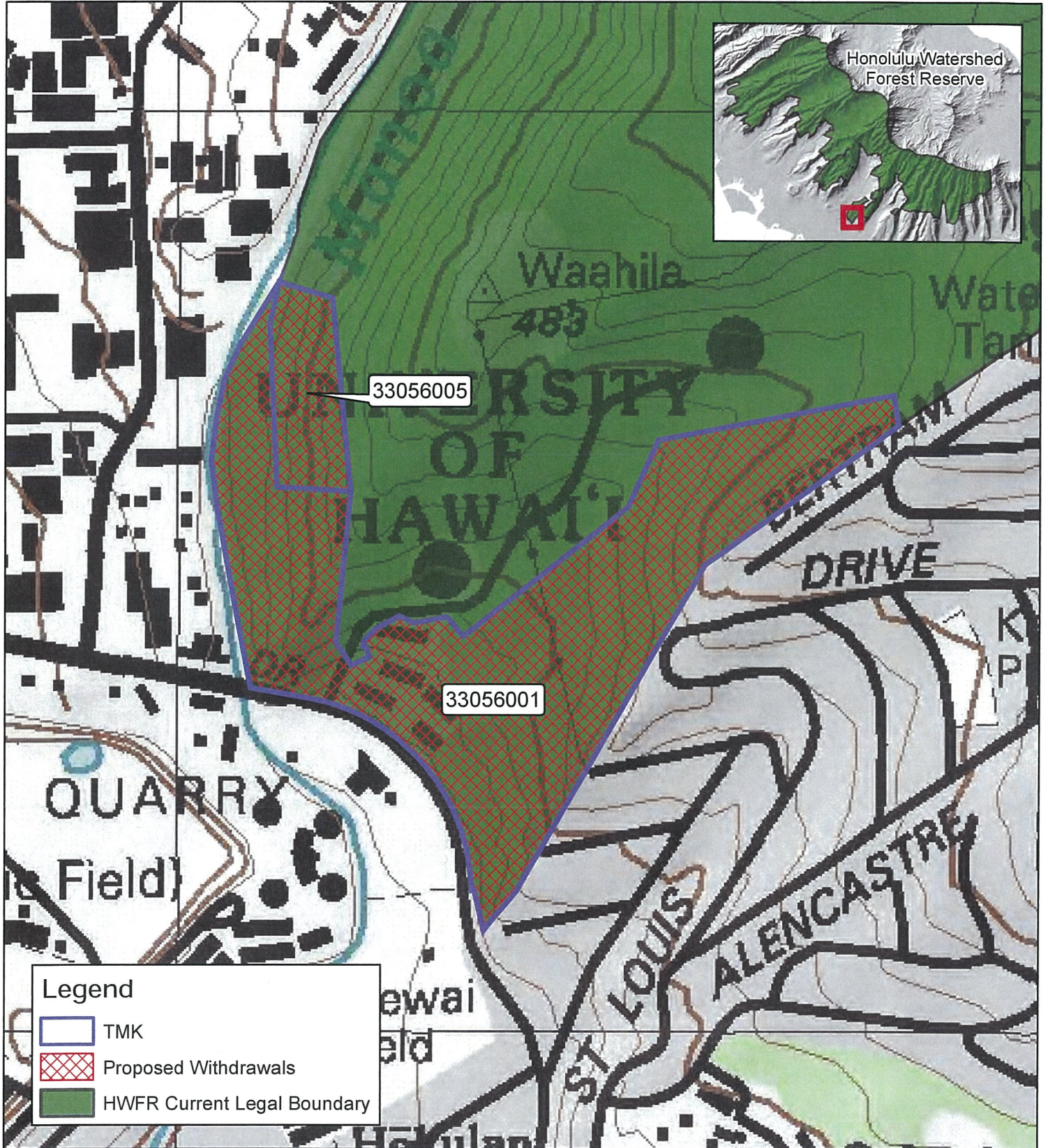
State of Hawai'i
Department of Land and Natural Resources
Division of Forestry and Wildlife
(808) 587-0166
April 2015



0 0.125 0.25 0.5
Miles



Exhibit P - Proposed Withdrawals from the Honolulu Watershed Forest Reserve (Wa'ahila)



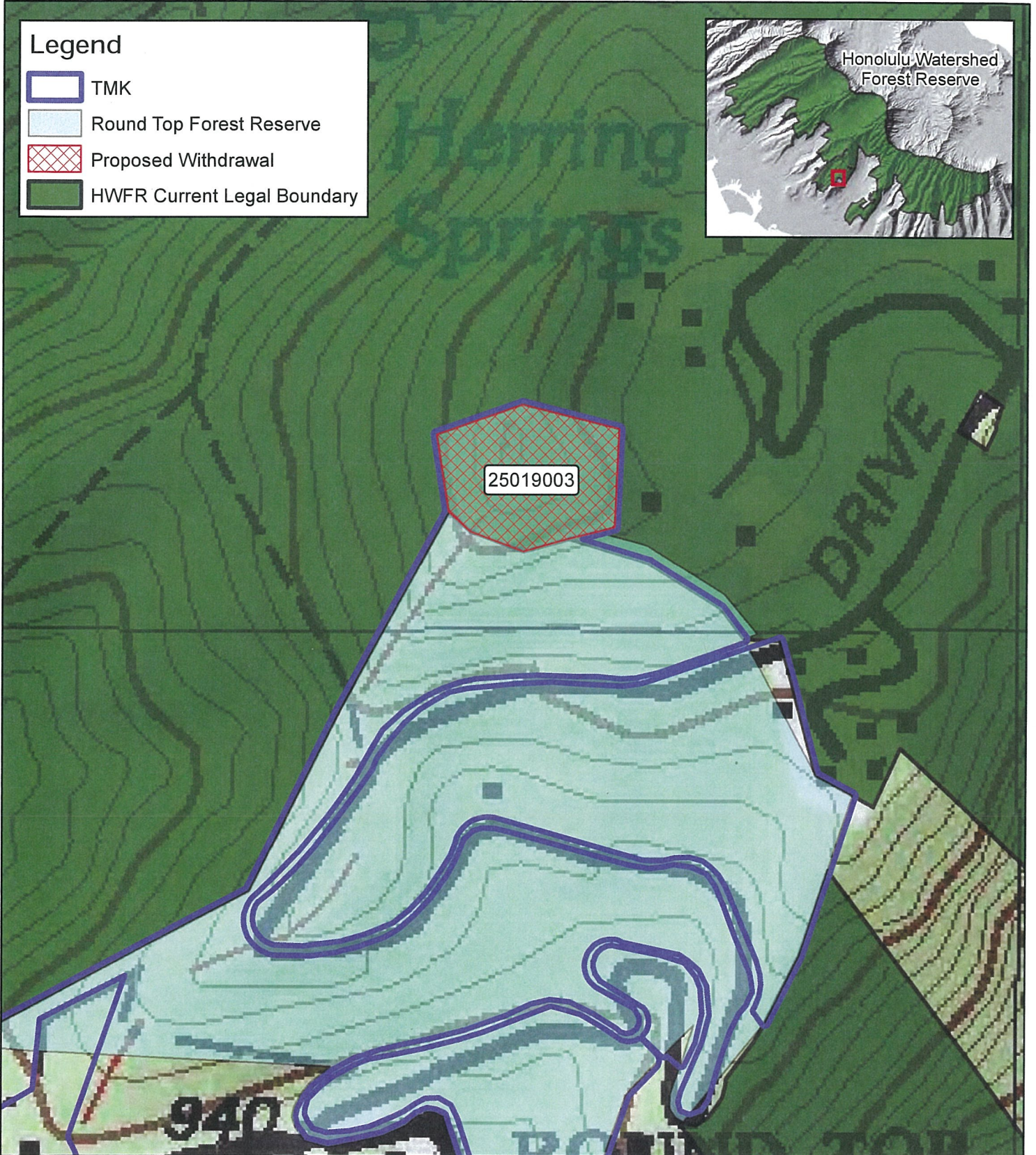
State of Hawai'i
Department of Land and Natural Resources
Division of Forestry and Wildlife
(808) 587-0166
April 2015



0 0.05 0.1 0.2
Miles



Exhibit Q - Proposed Withdrawal from the Honolulu Watershed Forest Reserve (Round Top Forest Reserve)



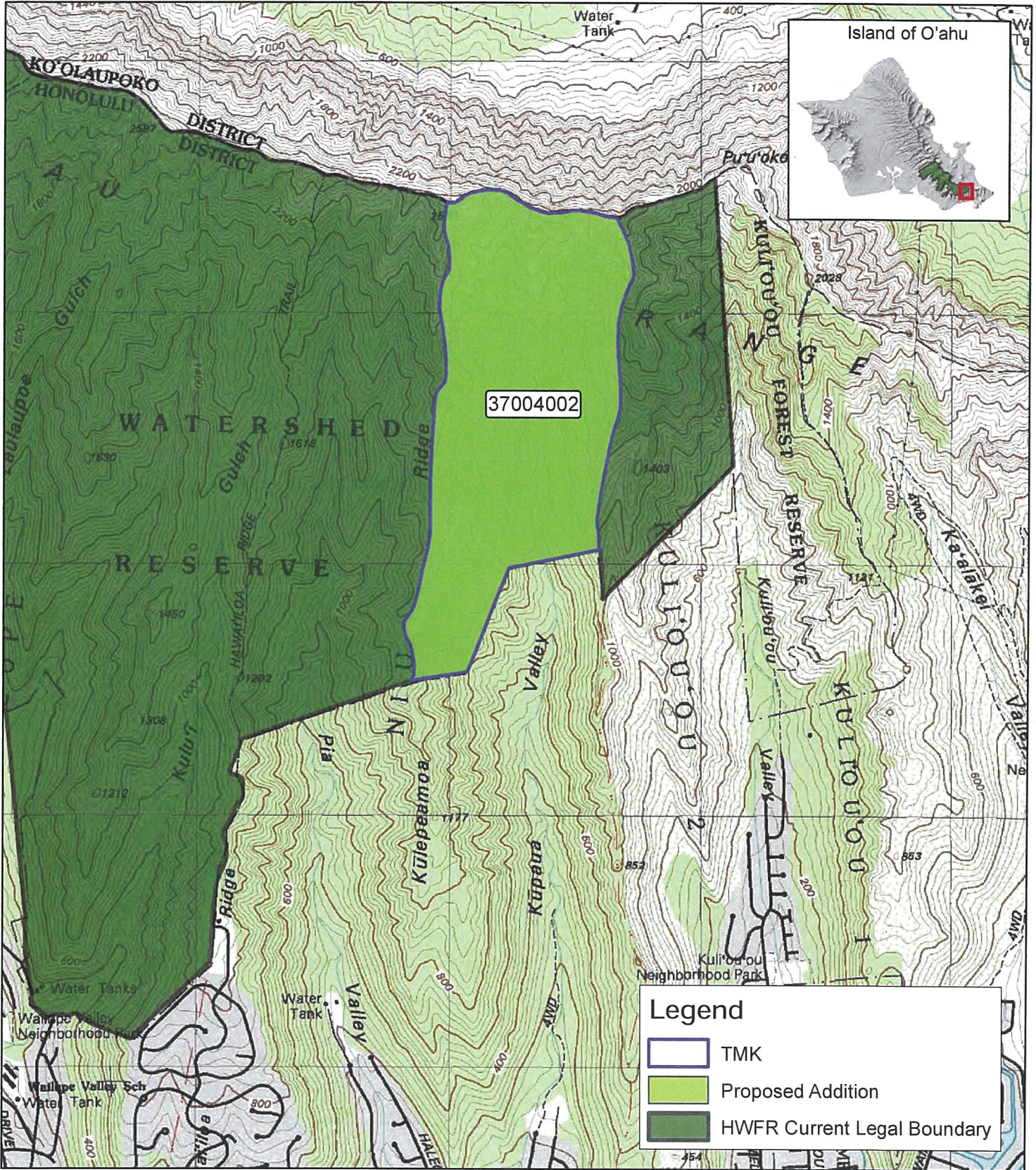
State of Hawai'i
Department of Land and Natural Resources
Division of Forestry and Wildlife
(808) 587-0166
April 2015



0 0.025 0.05 0.1
Miles



Exhibit R - Proposed Addition to the Honolulu Watershed Forest Reserve (Niu)



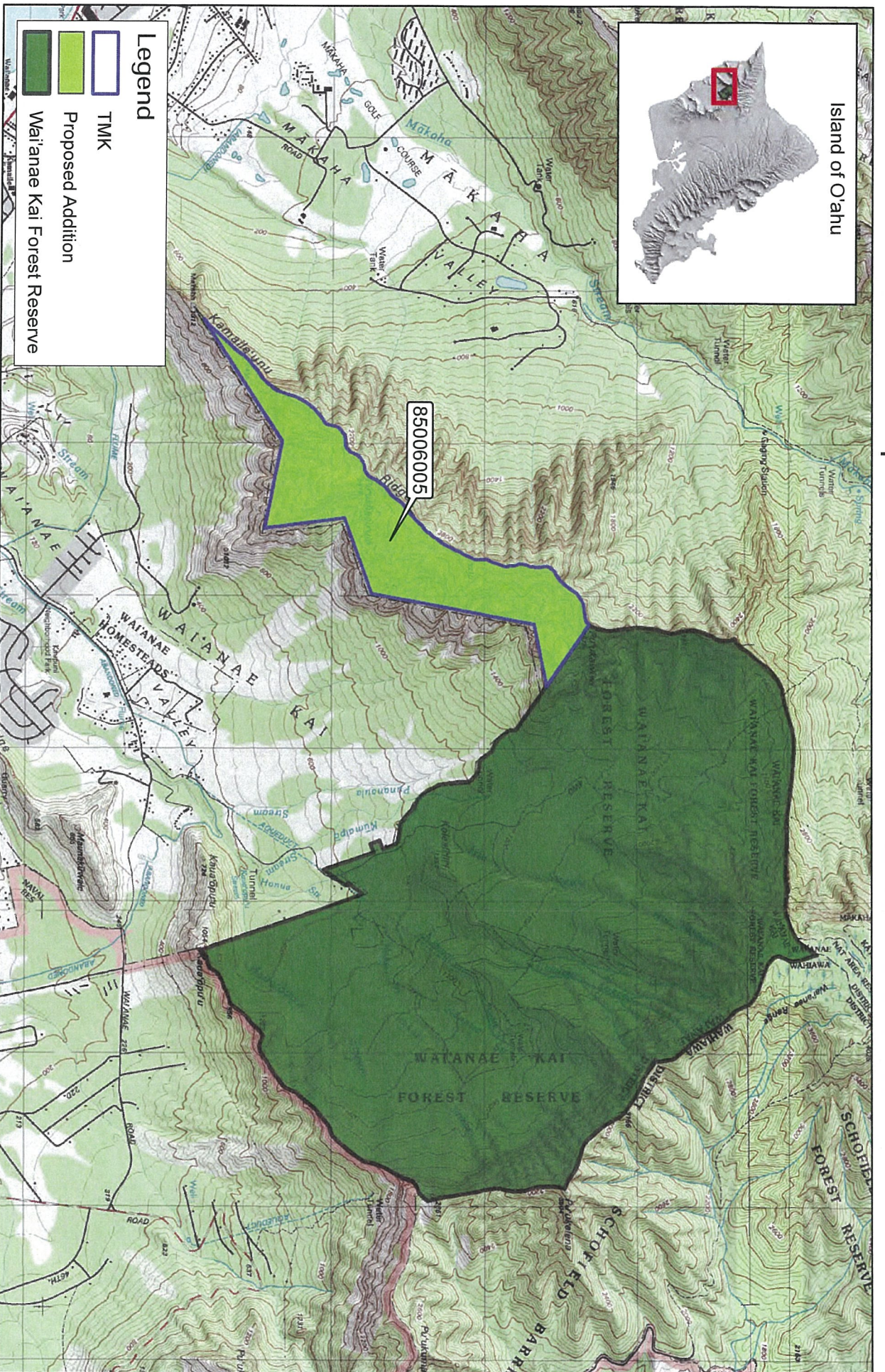
State of Hawai'i
 Department of Land and Natural Resources
 Division of Forestry and Wildlife
 (808) 587-0166
 April 2015



0 0.125 0.25 0.5 Miles



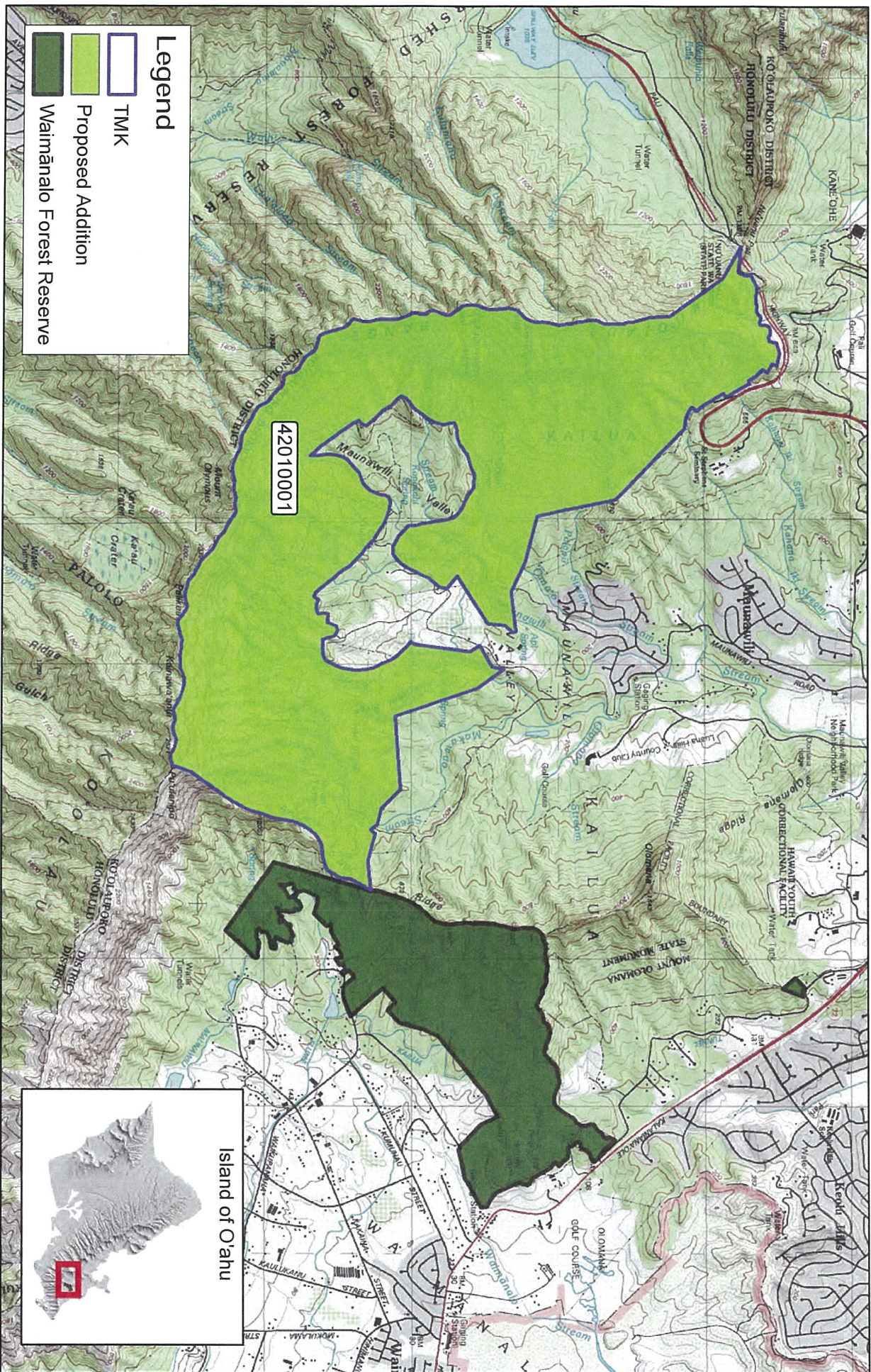
Exhibit S - Proposed Addition to Wai'anae Kai Forest Reserve



State of Hawai'i
Department of Land and Natural Resources
Division of Forestry and Wildlife
(808) 587-0166
April 2015



Exhibit T - Proposed Addition to Waimānalo Forest Reserve



State of Hawai'i
 Department of Land and Natural Resources
 Division of Forestry and Wildlife
 (808) 587-0166
 April 2015



HAWAII STATE OFFICE OF PLANNING

**HEARING OFFICER'S REPORT AND MINUTES OF:
Public Hearing for Five (5) Proposed Changes Affecting the Area of
Government Forest Reserve Lands on the Island of O'ahu**

Kalanimoku Building
Land Board Conference Room 132
1151 Punchbowl Street, Honolulu, Hawaii, 96813
5:30 pm

March 4, 2015

SUMMARY OF TESTIMONIES RECEIVED

Written testimonies are kept on file in the Division of Forestry and Wildlife for public review.

No oral testimonies were provided

No written testimonies were received.

I. SUMMARY OF PUBLIC HEARING PROCEEDINGS

- A. The public hearing was called to order at 5:30 pm. In attendance were the following staff members from the Department of Land and Natural Resources:

Division of Forestry and Wildlife:

Ryan Peralta – Hearing Officer

Marissa Chee

Jan Pali

Kylee AhChoy

David Smith

Oahu Forest Management Supervisor I

Oahu Forestry Specialist

Forestry Watershed Planner

Forestry Administrative Intern

Forestry and Wildlife Manager

- B. No members of the public attended the meeting, and no written testimony was submitted.
- C. The public hearing was adjourned at 6:00 pm.

II. APPROVALS AND NOTICES OF PUBLIC HEARING

- A. Approval to hold a public hearing on the proposed forest reserve additions and withdrawals was obtained from the Board of Land and Natural Resources on September 28, 2012, December 12, 2014, and January 9, 2015.
- B. Approval to hold the public hearing and to appoint Ryan Peralta as the Hearing Officer was obtained from the Chairperson on January 21, 2015.

- C. Notice of this public hearing was published on February 15, 2015, in the Sunday editions of the Garden Island, Honolulu Star-Advertiser, Maui News, West Hawaii Today, and Hawaii Tribune-Herald newspapers.

Minutes prepared and respectfully submitted by Ryan Peralta.