

DAVID Y. IGE  
GOVERNOR



STATE OF HAWAII  
DEPARTMENT OF TRANSPORTATION  
869 PUNCHBOWL STREET  
HONOLULU, HAWAII 96813-5097

FORD N. FUCHIGAMI  
DIRECTOR

Deputy Directors  
JADE T. BUTAY  
ROSS M. HIGASHI  
EDWIN H. SNIFFIN  
DARRELL T. YOUNG

IN REPLY REFER TO:

Board of Land and  
Natural Resources  
State of Hawaii  
Honolulu, Hawaii

ISSUANCE OF A REVOCABLE PERMIT  
FOR THE STORAGE OF AIRCRAFT CLEANING EQUIPMENT  
WESTERN PACIFIC AVIATION MANAGEMENT CORPORATION  
DBA: WESPAC AIR, INC.  
DIAMOND HEAD CONCOURSE  
HONOLULU INTERNATIONAL AIRPORT  
TAX MAP KEY: (1) 1-1-003: 065 (PORTION)

OAHU

LEGAL REFERENCE:

Section 171-55, Hawaii Revised Statutes

APPLICANT:

Western Pacific Aviation Corporation, Inc. doing business as Wespac Air, Inc. (Wespac),  
whose business address is 111 Hekili Street, Suite A-180, Kailua, Hawaii, 96734-2800

LOCATION:

Diamond Head Concourse, Ground Level, Space No. 373-161A at Honolulu International  
Airport, Tax Map Key: 1st Division, 1-1-003: 0 (Portion)

AREA:

Space No. 373-161A, containing an area of approximately 180 square feet; as shown and  
delineated on the attached map labeled Exhibit "A".

ZONING:

State Land Use District: Urban  
City and County of Honolulu LUO: Industrial (I-2)

**ITEM M-3**

LAND TITLE STATUS:

Non-ceded - Section 5(a) lands of the Hawaii Admission Act  
DHHL 30% entitlement lands pursuant to Hawaii Admission Act    YES \_\_\_    NO X

CURRENT USE STATUS:

Land presently encumbered by Governor's Executive Order No. 3201, dated June 8, 1983, setting aside 3,152.177 acres designated as Honolulu International Airport under the control and management of the State of Hawaii, Department of Transportation, Airports Division for Airport Purposes.

CHARACTER OF USE:

Wespac will use the space store equipment associated with an aircraft cleaning contract with United Airlines at Honolulu International Airport.

COMMENCEMENT DATE:

To be determined by the Director of Transportation at a later date.

MONTHLY RENTAL:

\$169.20

SECURITY DEPOSIT:

Three (3) times the monthly rental in effect.

HOLDOVER TENANCY:

\$5.64

DCCA VERIFICATION:

Place of business registration confirmed:	YES <u>X</u>	NO ___
Registered business name confirmed:	YES <u>X</u>	NO ___
Good standing confirmed:	YES <u>X</u>	NO ___

CHAPTER 343, HRS - ENVIRONMENTAL ASSESSMENT:

Pursuant to Section 11-200-8(a), Environmental Impact Statement Rules of the Department of Health, State of Hawaii, this disposition is exempt from requirements regarding preparation of an environmental assessment, negative declaration, or environmental impact statement as required by Chapter 343, Hawaii Revised Statutes, as amended, relating to Environmental Impact Statements, because the proposed action falls within Exemption Class #1, Comprehensive Exemption List for the State of Hawaii, Department of Transportation, dated November 15, 2000, as approved by the Environmental Quality Council.


REMARKS:

In accordance with Section 171-55 HRS, relating to Permits, the Department of Transportation proposes to issue a month-to-month Revocable Permit to Wespac to occupy a portion of Building 373, Space No. 161A, to store equipment associated with cleaning service contract with United Airlines at Honolulu International Airport.


RECOMMENDATION:

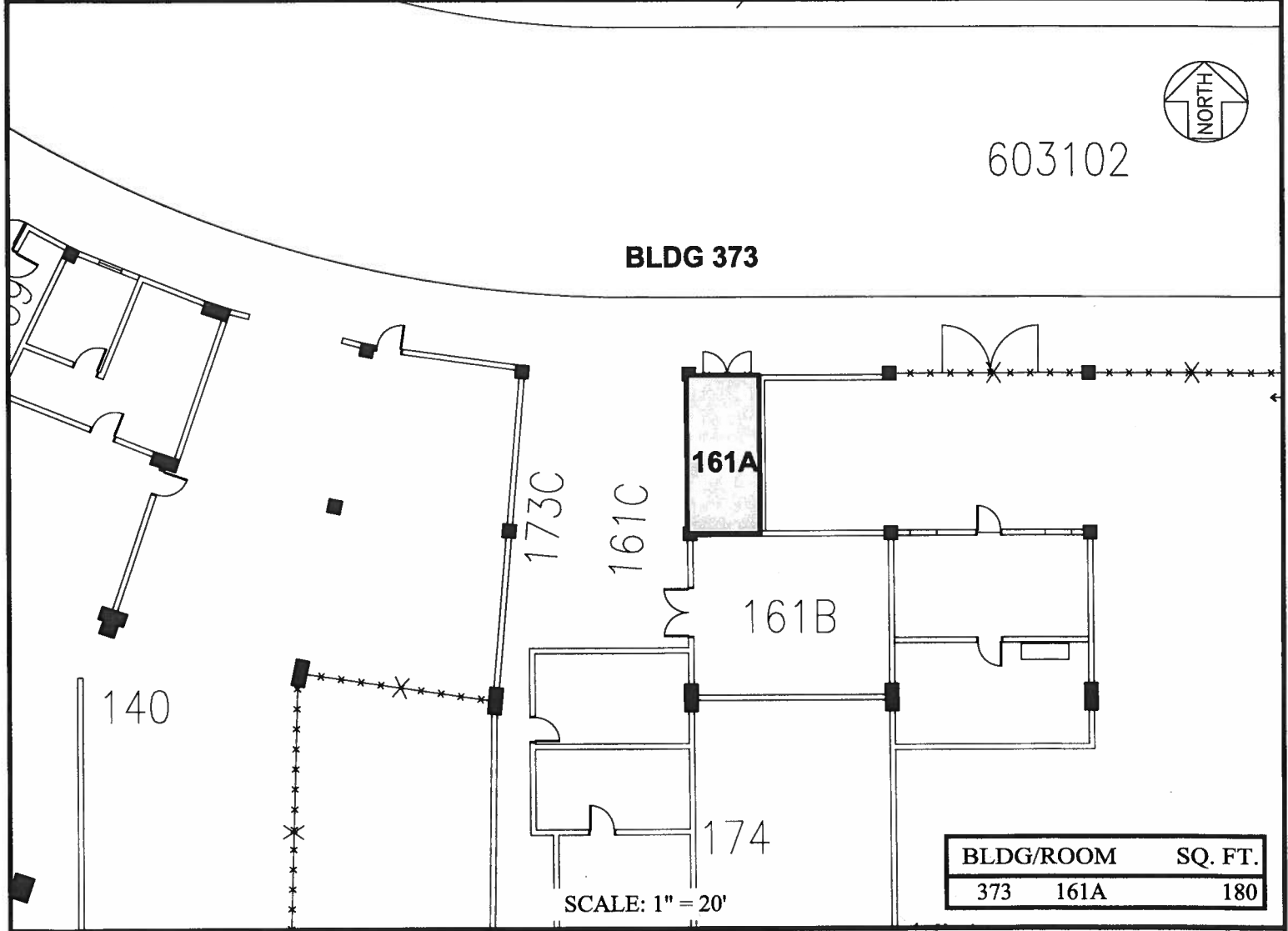
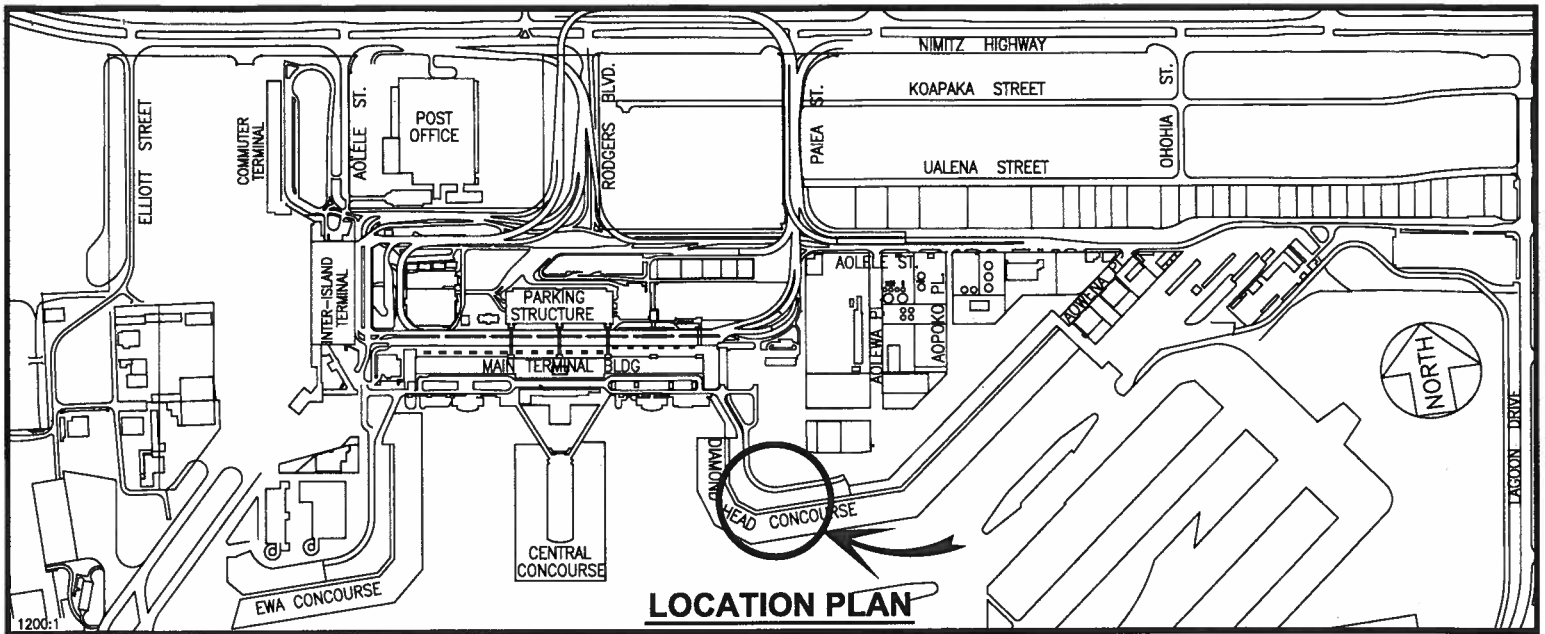
That the Board authorize the Department of Transportation to issue a month-to-month revocable permit to Wespac, subject to: (1) terms and conditions herein outlined, which are by reference incorporated herein; and (2) such additional terms and conditions as may be prescribed by the Director of Transportation to best serve the interests of the State.

Respectfully submitted,

  
FOR FORD N. FUCHIGAMI  
Director of Transportation

APPROVED FOR SUBMITTAL:

  
SUZANNE D. CASE  
Chairperson and Member



DATE : MAY 2015

EXHIBIT: **A**



Airports Division

**BUILDING 373  
DIAMOND HEAD CONCOURSE  
GROUND LEVEL**

**373161A  
PLAT M1**