

DAVID Y. IGE
GOVERNOR



STATE OF HAWAII
DEPARTMENT OF TRANSPORTATION
869 PUNCHBOWL STREET
HONOLULU, HAWAII 96813-5097

FORD N. FUCHIGAMI
DIRECTOR

Deputy Directors
JADE T. BUTAY
ROSS M. HIGASHI
EDWIN H. SNIFFEN
DARRELL T. YOUNG

IN REPLY REFER TO:

Board of Land and
Natural Resources
State of Hawaii
Honolulu, Hawaii

ISSUANCE OF A REVOCABLE PERMIT FOR AIRCRAFT PARKING
FMY, INC.
HONOLULU INTERNATIONAL AIRPORT
TAX MAP KEY: (1) 1-1-76: PORTION OF 23

OAHU

REQUEST:

Issuance of a Revocable Permit for Aircraft Parking (Parking Permit) to
FMY, Inc, situated at Honolulu International Airport.

LEGAL REFERENCE:

Section 171-55, Hawaii Revised Statutes

APPLICANT:

FMY, Inc, whose mailing address is 3055 Kanu Street, Honolulu, Hawaii 96822

LOCATION AND TAX MAP KEY:

A portion of Honolulu International Airport, identified as the South Ramp,
Tax Map Key: 1st Division, 1-1-76: portion of 23

AREA:

Area/Space No. 423-105, containing an area of approximately 990 square feet, as shown
and delineated on the attached map labeled Exhibit "A".

ZONING:

State Land Use District: Urban
City and County of Honolulu LUO: Industrial (I-2)

ITEM M-1

BLNR – ISSUANCE OF A REVOCABLE PERMIT FOR AIRCRAFT PARKING
FMY, INC.
Page 2

LAND TITLE STATUS:

Non-ceded - Section 5(a) lands of the Hawaii Admission Act
DHHL 30% entitlement lands pursuant to Hawaii Admission Act YES ___ NO X

CURRENT USE STATUS:

Land presently encumbered by Governor's Executive Order No. 3201, dated June 8, 1983, setting aside 3,152.177 acres designated as Honolulu International Airport under the control and management of the State of Hawaii, Department of Transportation, Airports Division for Airport Purposes.

CHARACTER OF USE:

Aircraft tie-down

COMMENCEMENT DATE:

Upon Execution

MONTHLY RENTAL:

\$96.00

SECURITY DEPOSIT:

Three (3) times the monthly rental in effect.

REMARKS:

The issuance of a Revocable Permit for Aircraft Parking (Parking Permit) to FMY, Inc, at Honolulu International Airport complies with Chapter 343, Exemption Class 1.D.10 as a continuing aeronautical use, and is in accordance with Section 171-55 HRS, relating to Permits.

RECOMMENDATION:

That the Board authorize the Department of Transportation to issue a month-to-month Revocable Permit for Aircraft Parking (Parking Permit) to FMY, Inc, subject to:
(1) terms and conditions herein outlined, which are by reference incorporated herein; and
(2) such additional terms and conditions as may be prescribed by the Director of Transportation to best serve the interests of the State.

Respectfully submitted,

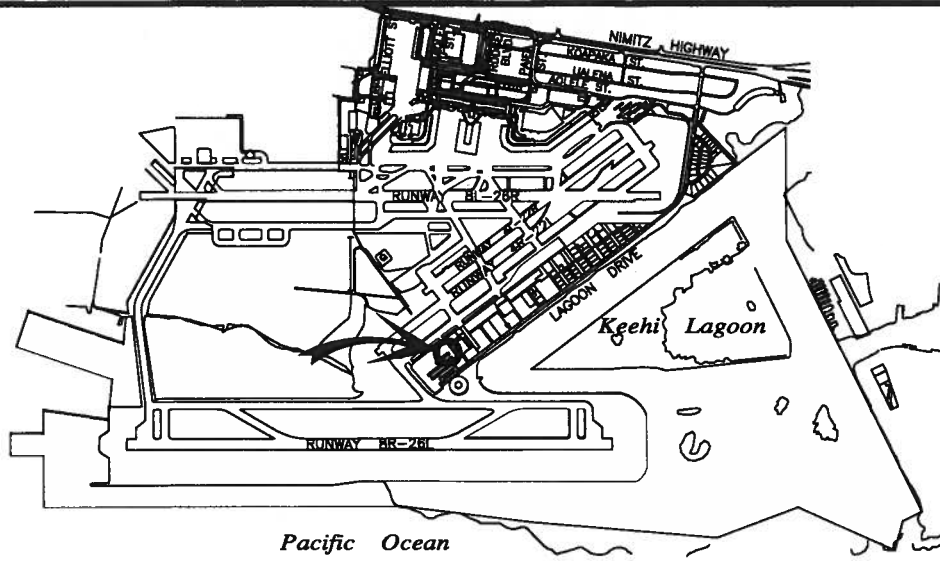


FORD N. FUCHIGAMI
Director of Transportation

APPROVED FOR SUBMITTAL:

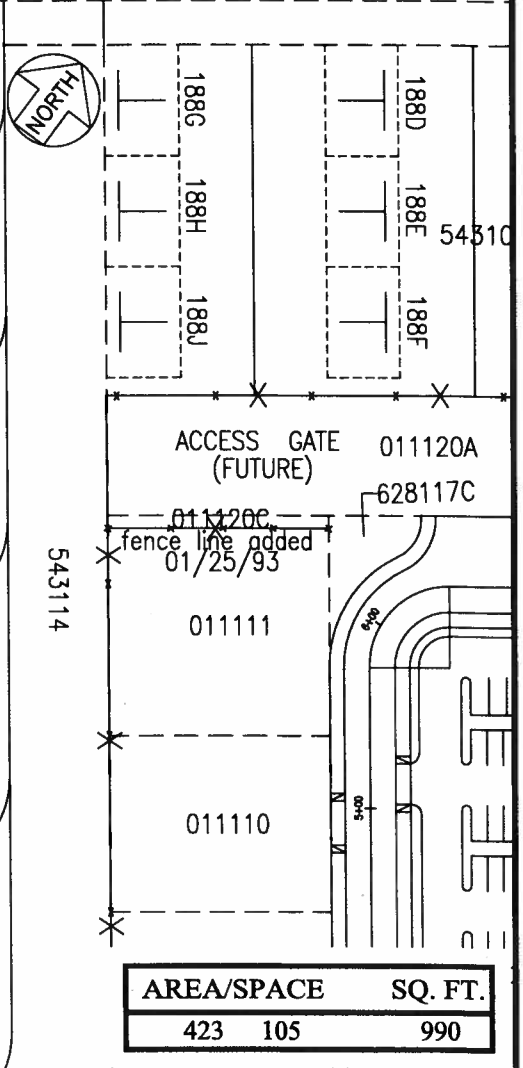
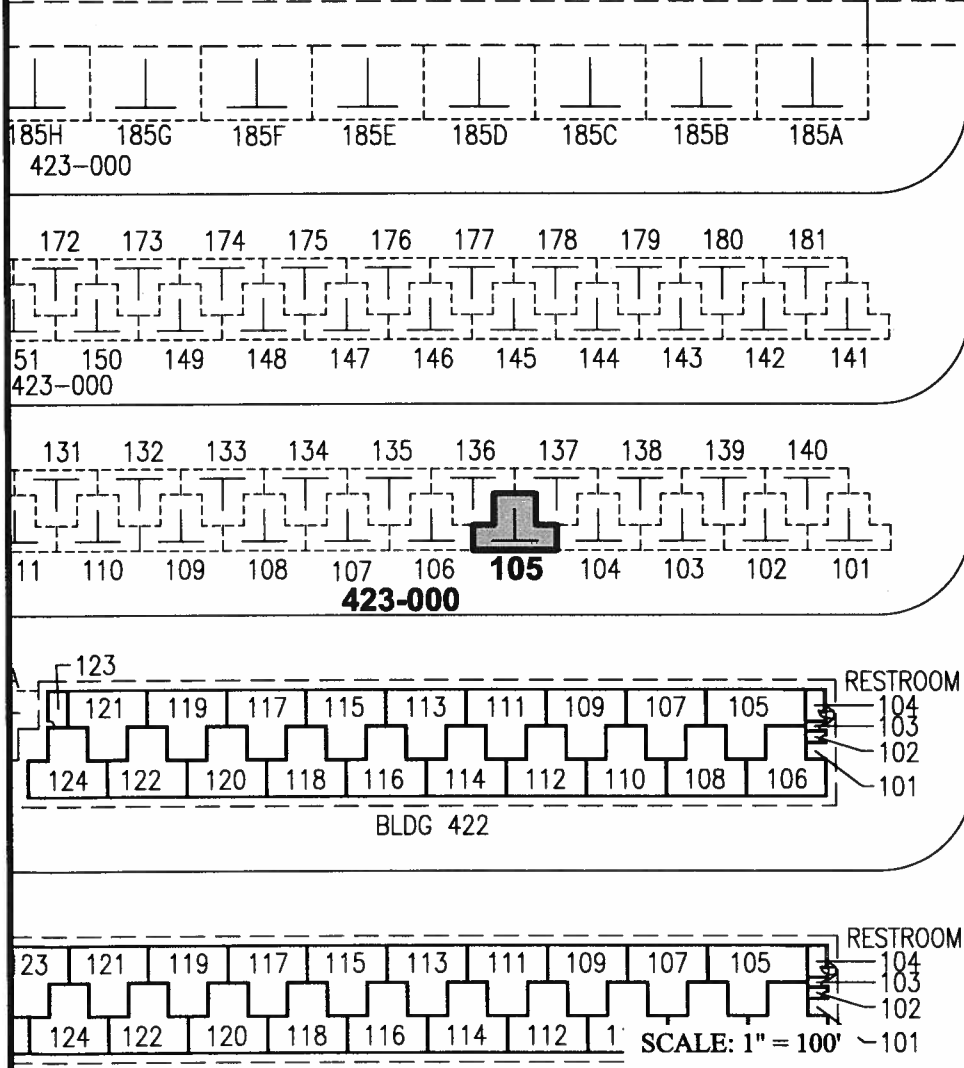


SUZANNE D. CASE
Chairperson and Member



LOCATION PLAN

5000:1



AREA/SPACE	SQ. FT.
423 105	990

PP-15-0011

DATE : AUGUST 2015

EXHIBIT: **A**



Airports Division

FMY, INC.

GENERAL AVIATION
 FACILITIES
 SOUTH RAMP

423105
 PLAT 45

HONOLULU INTERNATIONAL AIRPORT

N:\AIRPORTS\HNL_HONOLULU\CAD\PM\HNL_423105-01.DWG