

DAVID Y. IGE
GOVERNOR



STATE OF HAWAII
DEPARTMENT OF TRANSPORTATION
869 PUNCHBOWL STREET
HONOLULU, HAWAII 96813-5097

FORD N. FUCHIGAMI
DIRECTOR

Deputy Directors
JADE T. BUTAY
ROSS M. HIGASHI
EDWIN H. SNIFFEN
DARRELL T. YOUNG

IN REPLY REFER TO:

Board of Land and
Natural Resources
State of Hawaii
Honolulu, Hawaii

ISSUANCE OF A REVOCABLE PERMIT FOR AIRCRAFT PARKING
PACIFIC AIR CHARTERS, INC.
HONOLULU INTERNATIONAL AIRPORT
TAX MAP KEY: (1) 1-1-76: PORTION OF 23

OAHU

REQUEST:

Issuance of a Revocable Permit for aircraft parking (parking permit) to
Pacific Air Charters, Inc., situated at Honolulu International Airport.

LEGAL REFERENCE:

Section 171-55, Hawaii Revised Statutes

APPLICANT:

Pacific Air Charters, Inc. (PAC), whose mailing address is 90 Nakolo Place, #117,
Honolulu, Hawaii 96819.

LOCATION AND TAX MAP KEY:

A portion of Honolulu International Airport, identified as the South Ramp,
Tax Map Key: 1st Division, 1-1-76: portion of 23

AREA:

Area/Space Nos. 423-164, 423-165, 423-185N, 423-185P, and 423-185Q, as shown and
delineated on the attached map labeled Exhibit "A".

ITEM M-8

BLNR – ISSUANCE OF A REVOCABLE PERMIT FOR AIRCRAFT PARKING
PACIFIC AIR CHARTERS, INC.

Page 2

ZONING:

State Land Use District: Urban
City and County of Honolulu LUO: Industrial (I-2)

LAND TITLE STATUS:

Non-ceded - Section 5(a) lands of the Hawaii Admission Act
DHHL 30% entitlement lands pursuant to Hawaii Admission Act YES ___ NO X

CURRENT USE STATUS:

Land presently encumbered by Governor's Executive Order No. 3201, dated June 8, 1983, setting aside 3,152.177 acres designated as Honolulu International Airport under the control and management of the State of Hawaii, Department of Transportation, Airports Division for Airport Purposes.

CHARACTER OF USE:

Aircraft tie-downs

COMMENCEMENT DATE:

January 1, 2015

MONTHLY RENTAL:

\$600.00

SECURITY DEPOSIT:

Three (3) times the monthly rental in effect.

REMARKS:

The issuance of a revocable permit for aircraft parking to PAC at Honolulu International Airport complies with Chapter 343, Exemption Class 1.D.10 as a continuing aeronautical use, and is in accordance with Section 171-55 HRS, relating to Permits.

BLNR – ISSUANCE OF A REVOCABLE PERMIT FOR AIRCRAFT PARKING
PACIFIC AIR CHARTERS, INC.

Page 3

RECOMMENDATION:

That the Board authorize the Department of Transportation to issue a month-to-month revocable permit for aircraft parking to PAC, subject to: (1) terms and conditions herein outlined, which are by reference incorporated herein; and (2) such additional terms and conditions as may be prescribed by the Director of Transportation to best serve the interests of the State.

Respectfully submitted,

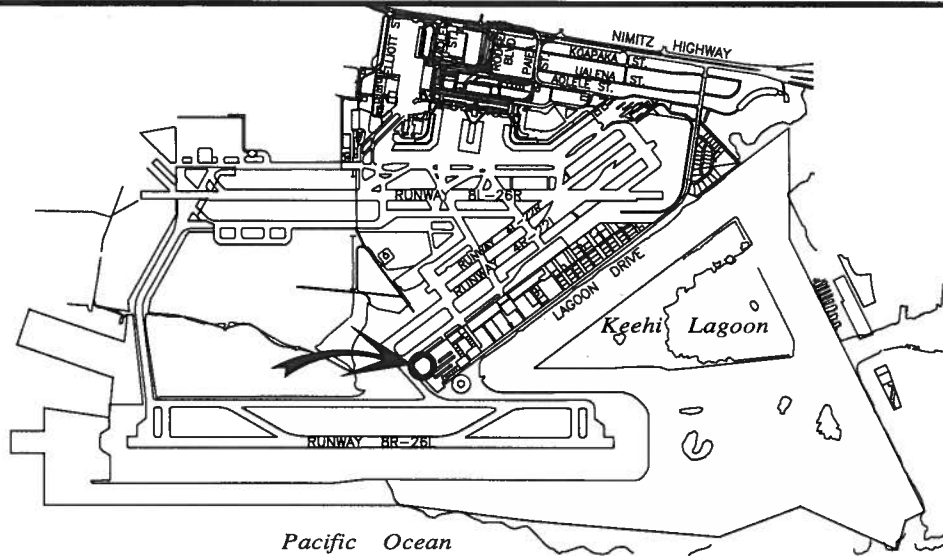


FORD N. FUCHIGAMI
Director of Transportation

APPROVED FOR SUBMITTAL:

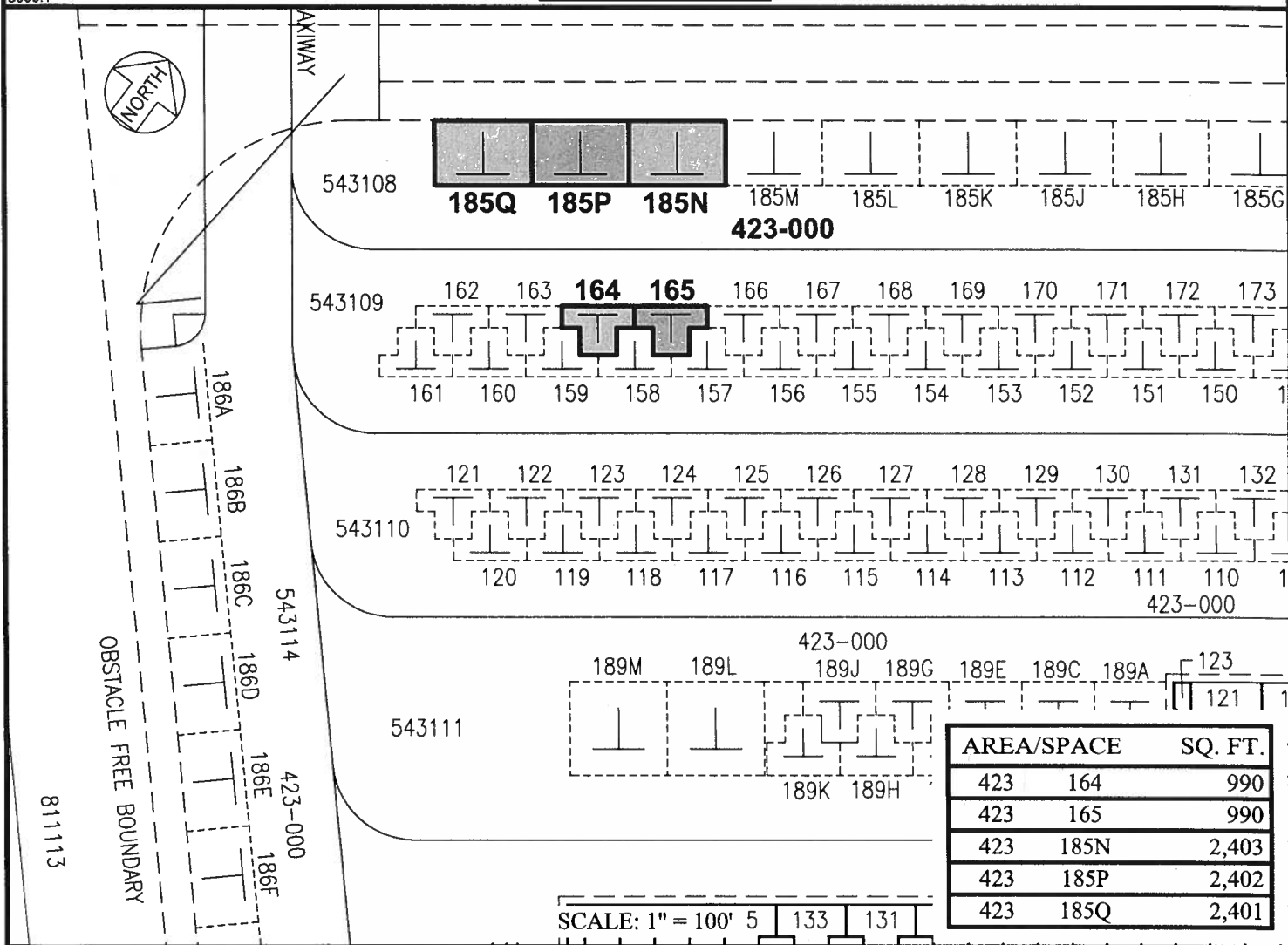


SUZANNE D. CASE
Chairperson and Member



LOCATION PLAN

5000:1



AREA/SPACE	SQ. FT.
423 164	990
423 165	990
423 185N	2,403
423 185P	2,402
423 185Q	2,401

SCALE: 1" = 100' 5 133 131

PP-15-0021

DATE : AUGUST 2015

EXHIBIT: **A**



PACIFIC AIR CHARTERS, INC.

GENERAL AVIATION FACILITIES SOUTH RAMP

423164,165
423185N-Q
PLAT 45

HONOLULU INTERNATIONAL AIRPORT

N:\AIRPORTS\HNL_HONOLULU\CAD\PM\HNL_423164-01.DWG