



STATE OF HAWAII
DEPARTMENT OF TRANSPORTATION
869 PUNCHBOWL STREET
HONOLULU, HAWAII 96813-5097

FORD N. FUCHIGAMI
DIRECTOR

Deputy Directors
JADE T. BUTAY
ROSS M. HIGASHI
EDWIN H. SNIFFEN
DARRELL T. YOUNG

IN REPLY REFER TO:

Board of Land and
Natural Resources
State of Hawaii
Honolulu, Hawaii

ISSUANCE OF A REVOCABLE PERMIT FOR AIRCRAFT PARKING
MAUNA LOA HELICOPTER TOURS LLC DBA MAUNA LOA HELICOPTERS
LIHUE AIRPORT
TAX MAP KEY: (4) 3-5-01: PORTION OF 8 KAUAI

REQUEST:

Issuance of a Revocable Permit for Aircraft Parking (parking permit) to
Mauna Loa Helicopter Tours LLC dba Mauna Loa Helicopters, situated at Lihue Airport.

LEGAL REFERENCE:

Section 171-55, Hawaii Revised Statutes

APPLICANT:

Mauna Loa Helicopter Tours LLC dba Mauna Loa Helicopters (MLH), whose mailing
address is 73-310 U'u Street, Kailua-Kona, Hawaii 96740.

LOCATION AND TAX MAP KEY:

Portion of Lihue Airport, Lihue, Island of Kauai, identified by
Tax Map Key: 4th Division, 3-5-01: Portion of 8

AREA:

Area/Space No. 408-110, containing an area of approximately 990 square feet, as shown and
delineated on the attached map labeled Exhibit "A".

ZONING:

State Land Use: Urban
County: Industrial (IG-STP)

LAND TITLE STATUS:

Section 5(a), Hawaii Admissions Act: Non-Ceded
DHHL, 30% entitlement lands Yes No X

ITEM M-20

BLNR – ISSUANCE OF A REVOCABLE PERMIT FOR AIRCRAFT PARKING
MAUNA LOA HELICOPTER TOURS LLC DBA MAUNA LOA HELICOPTERS
Page 2

CURRENT USE STATUS:

Airport purposes

CHARACTER OF USE:

Aircraft tie-down

COMMENCEMENT DATE:

Upon execution of the parking permit

MONTHLY RENTAL:

\$136.00

SECURITY DEPOSIT:

\$408.00

REMARKS:

The issuance of a Revocable Permit for Aircraft Parking (parking permit) to MLH at Lihue Airport complies with Chapter 343, Exemption Class 1.D.10 as a continuing aeronautical use, and is in accordance with Section 171-55 HRS, relating to Permits.


RECOMMENDATION:

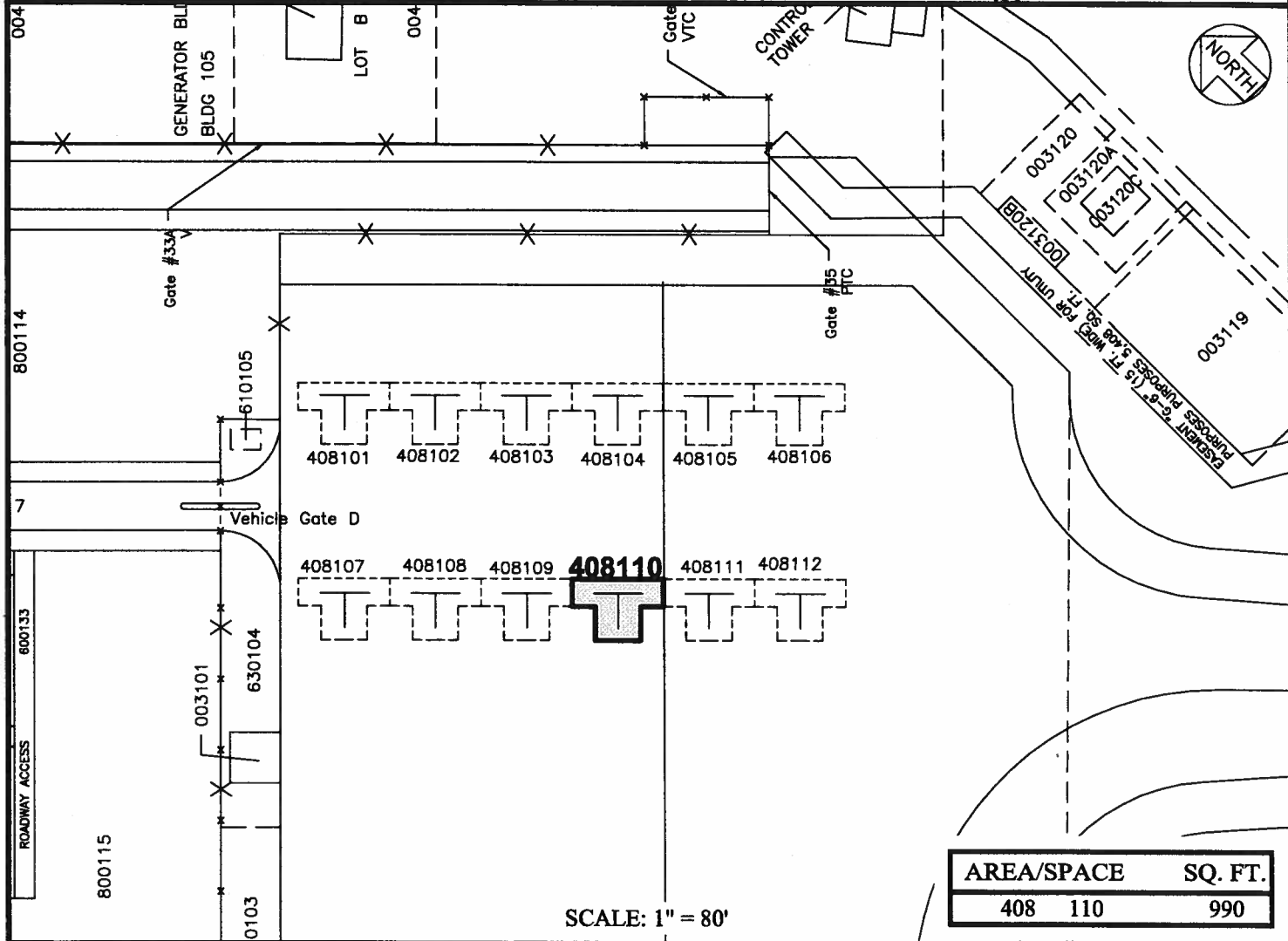
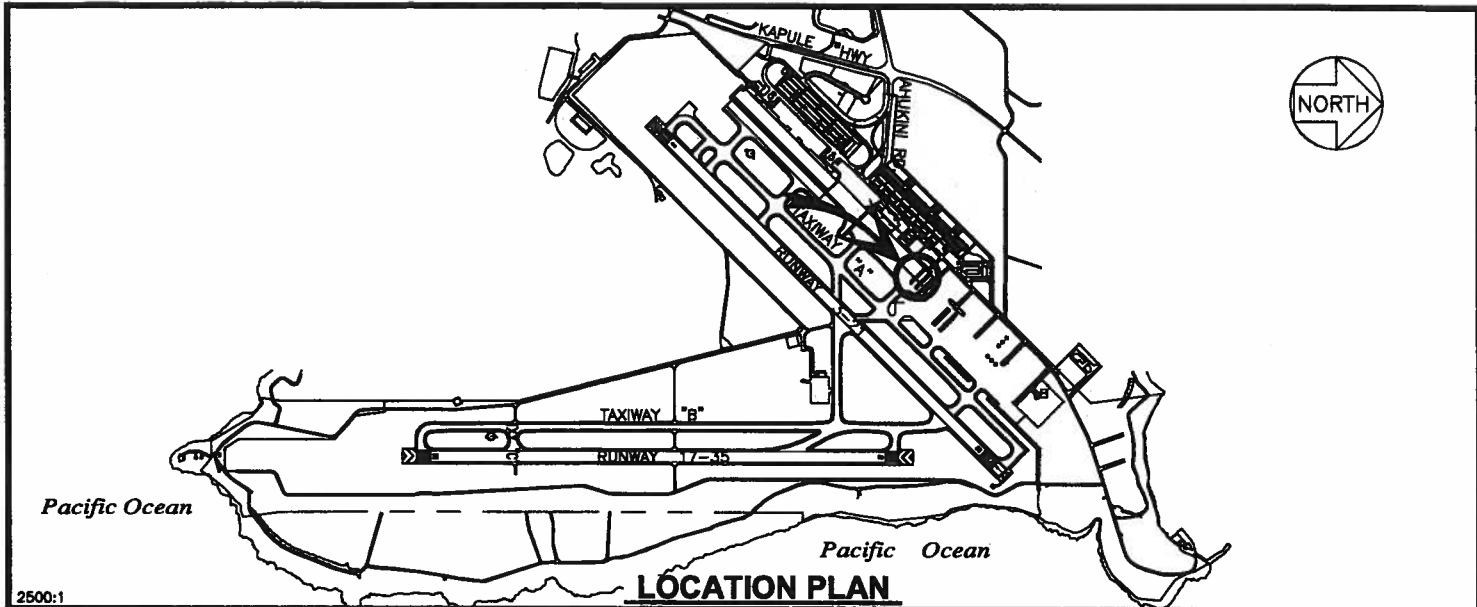
That the Board authorize the Department of Transportation to issue a month-to-month Revocable Permit for Aircraft Parking (parking permit) to MLH, subject to: (1) terms and conditions herein outlined, which are by reference incorporated herein; and (2) such additional terms and conditions as may be prescribed by the Director of Transportation to best serve the interests of the State.

Respectfully submitted,


FORD N. FUCHIGAMI
Director of Transportation

APPROVED FOR SUBMITTAL:


SUZANNE D. CASE
Chairperson and Member



PP-15-K004

DATE : SEPTEMBER 2015

EXHIBIT: **A**



Airports Division

**MAUNA LOA
HELICOPTER TOURS, LLC**

TIE-DOWNS

**408110
PLATS B1, 35**

LIHUE AIRPORT