



STATE OF HAWAII  
DEPARTMENT OF TRANSPORTATION  
869 PUNCHBOWL STREET  
HONOLULU, HAWAII 96813-5097

FORD N. FUCHIGAMI  
DIRECTOR

Deputy Directors  
JADE T. BUTAY  
ROSS M. HIGASHI  
EDWIN H. SNIFFEN  
DARRELL T. YOUNG

IN REPLY REFER TO:

Board of Land and  
Natural Resources  
State of Hawaii  
Honolulu, Hawaii

ISSUANCE OF A REVOCABLE PERMIT FOR AIRCRAFT PARKING  
HAWAII FROM ABOVE, LLC  
HONOLULU INTERNATIONAL AIRPORT  
TAX MAP KEY: (1) 1-1-76: PORTION OF 23

OAHU

REQUEST:

Issuance of a Revocable Permit for Aircraft Parking (Parking Permit) to  
Hawaii From Above, LLC, situated at Honolulu International Airport.

LEGAL REFERENCE:

Section 171-55, Hawaii Revised Statutes

APPLICANT:

Hawaii From Above, LLC, whose mailing address is 90 Nakolo Place,  
Honolulu, Hawaii 96819

LOCATION AND TAX MAP KEY:

A portion of Honolulu International Airport, identified as the South Ramp,  
Tax Map Key: 1<sup>st</sup> Division, 1-1-76: portion of 23

AREA:

Area/Space No. 423-186A, containing an area of approximately 2,340 square feet, as  
shown and delineated on the attached map labeled Exhibit "A".

ZONING:

State Land Use District: Urban  
City and County of Honolulu LUO: Industrial (I-2)

BLNR – ISSUANCE OF A REVOCABLE PERMIT FOR AIRCRAFT PARKING  
HAWAII FROM ABOVE, LLC

Page 2

LAND TITLE STATUS:

Non-ceded - Section 5(a) lands of the Hawaii Admission Act  
DHHL 30% entitlement lands pursuant to Hawaii Admission Act    YES \_\_\_    NO X

CURRENT USE STATUS:

Land presently encumbered by Governor's Executive Order No. 3201, dated June 8, 1983, setting aside 3,152.177 acres designated as Honolulu International Airport under the control and management of the State of Hawaii, Department of Transportation, Airports Division for Airport Purposes.

CHARACTER OF USE:

Aircraft tie-down

COMMENCEMENT DATE:

Upon execution

MONTHLY RENTAL:

\$136.00

SECURITY DEPOSIT:

Three (3) times the monthly rental in effect.

REMARKS:

The issuance of a Revocable Permit for Aircraft Parking (Parking Permit) to Hawaii From Above, LLC, at Honolulu International Airport complies with Chapter 343, Exemption Class 1.D.10 as a continuing aeronautical use, and is in accordance with Section 171-55 HRS, relating to Permits.

RECOMMENDATION:


That the Board authorize the Department of Transportation to issue a month-to-month Parking Permit to Hawaii From Above, LLC, subject to: (1) terms and conditions herein outlined, which are by reference incorporated herein; and (2) such additional terms and conditions as may be prescribed by the Director of Transportation to best serve the interests of the State.

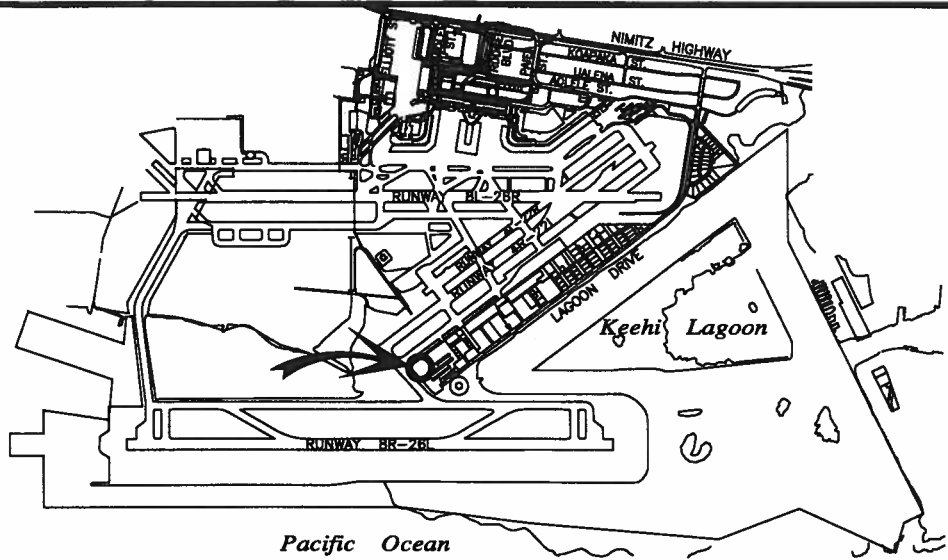
Respectfully submitted,



FORD N. FUCHIGAMI  
Director of Transportation

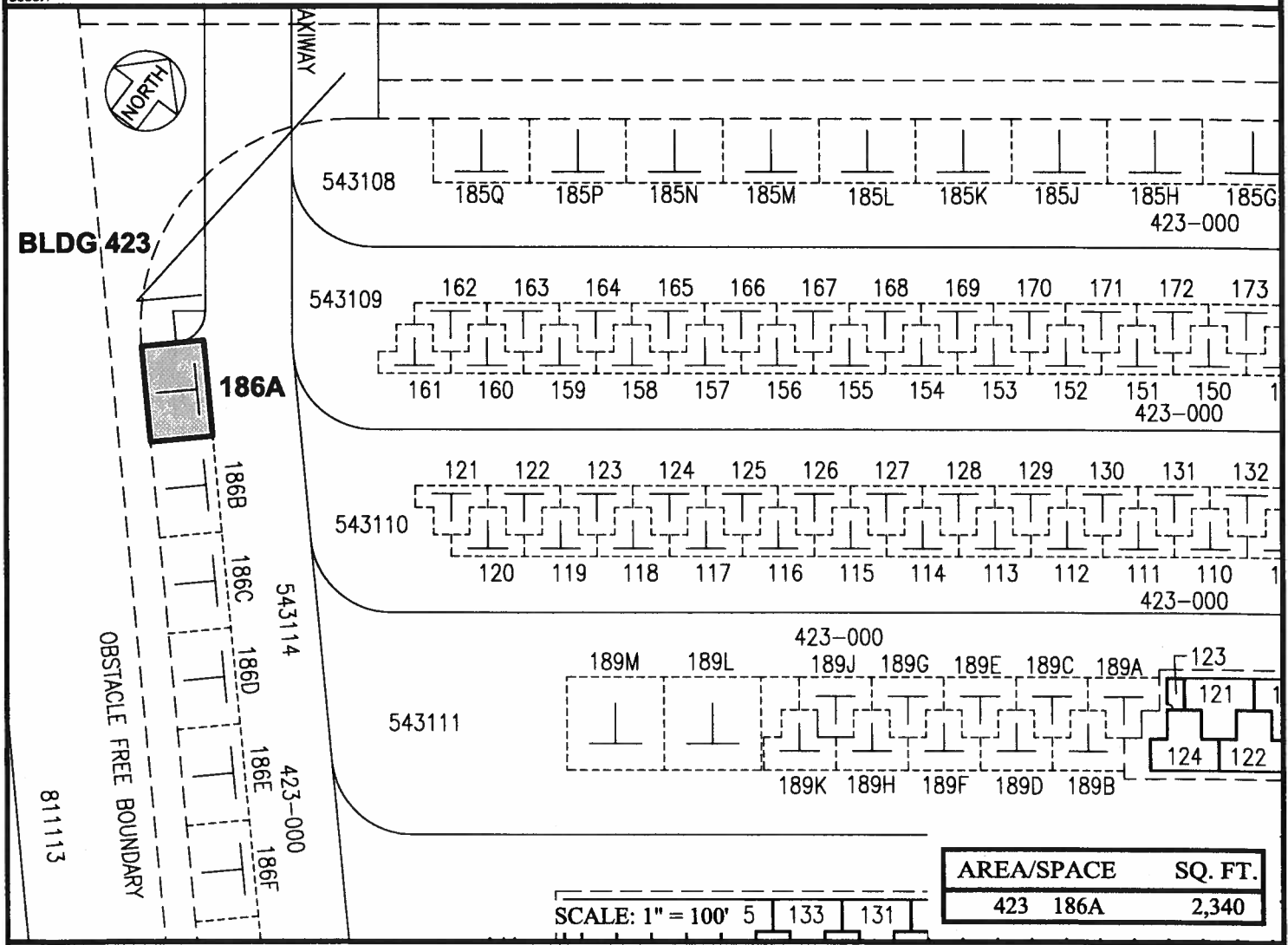
APPROVED FOR SUBMITTAL:

  
\_\_\_\_\_  
SUZANNE D. CASE  
Chairperson and Member



**LOCATION PLAN**

5000:1



AREA/SPACE	SQ. FT.
423 186A	2,340

PP-15-0026      DATE : SEPTEMBER 2015      EXHIBIT: **A**



HAWAII FROM ABOVE, LLC

TIE-DOWNS  
SOUTH RAMP

423186A  
PLAT 45

**HONOLULU INTERNATIONAL AIRPORT**

N:\AIRPORTS\HNL\_HONOLULU\CAD\PM\HNL\_423186A-02.DWG