



STATE OF HAWAII
DEPARTMENT OF TRANSPORTATION
869 PUNCHBOWL STREET
HONOLULU, HAWAII 96813-5097

Deputy Directors
JADE T. BUTAY
ROSS M. HIGASHI
EDWIN H. SNIFFEN
DARRELL T. YOUNG

IN REPLY REFER TO:

Board of Land and
Natural Resources
State of Hawaii
Honolulu, Hawaii

ISSUANCE OF A REVOCABLE PERMIT
TO STAGE CONSTRUCTION EQUIPMENT
FOR THE HONOLULU RAIL TRANSIT PROJECT
2979, 2969, 2959, 2949, AND 2939 UALENA STREET
HONOLULU INTERNATIONAL AIRPORT
TAX MAP KEY: 1-1-04:18, 17, 15 AND 14

OAHU

REQUEST:

The Honolulu Authority for Rapid Transportation (Hart) is in the process of awarding Project No. DB-450 (Airport Guideway and Stations Award Contract). The Area will be utilized by the awarded Contractor to stage construction equipment for the Honolulu Rail Transit Project.

The State of Hawaii, Department of Transportation, Airports Division (DOTA) will issue the Revocable Permit to the Contractor awarded the project. Hart has an estimated contract award date of March 2016.

LEGAL REFERENCE:

Section 171-55, Hawaii Revised Statutes

LOCATION:

Portion of Honolulu International Airport, Island of Oahu, State of Hawaii, identified as Tax Map Key: 1st Division, 1-1-04: 18, 17, 15 and 14.

AREA:

Area/Space No. 005-115, consisting of approximately 20,675 square feet;
Area/Space No. 005-116, consisting of approximately 20,674 square feet;
Area/Space No. 005-117, consisting of approximately 41,751 square feet; and
Area/Space No. 005-118, consisting of approximately 22,000 square feet, as
as shown and delineated on the attached map labeled Exhibit "A".

BLNR – ISSUANCE OF A REVOCABLE PERMIT
TO STAGE CONSTRUCTION EQUIPMENT
FOR THE HONOLULU RAIL TRANSIT PROJECT
HONOLULU INTERNATIONAL AIRPORT
Page 2

ZONING:

State Land Use District: Urban
City and County of Honolulu: Industrial (I-2)

LAND TITLE STATUS:

Non-ceded - Section 5(a) lands of the Hawaii Admission Act
DHHL 30% entitlement lands pursuant to Hawaii Admission Act YES ___ NO X

CURRENT USE STATUS:

Land presently encumbered by Governor's Executive Order No. 3894, setting aside a portion of Honolulu International Airport under the control and management of the DOTA for Airport Purposes.

The DOTA acquired the subject property, together with most of the remaining properties (except one) along the ocean (makai) side of Ualena Street, between Lagoon Drive and Paiea Street, in the mid-1990's from Loyalty Enterprises, Ltd.

CHARACTER OF USE:

To stage construction equipment for the Honolulu Rail Transit Project.

COMMENCEMENT DATE:

To be determined by the Director of Transportation at a later date.

MONTHLY RENTAL:

\$54,302.70

SECURITY DEPOSIT:

Three (3) times the monthly rental in effect

HOLDOVER TENANCY:

\$1,810.09

BLNR – ISSUANCE OF A REVOCABLE PERMIT
TO STAGE CONSTRUCTION EQUIPMENT
FOR THE HONOLULU RAIL TRANSIT PROJECT
HONOLULU INTERNATIONAL AIRPORT
Page 3

CHAPTER 343, HRS - ENVIRONMENTAL ASSESSMENT:

Pursuant to Section 11-200-8(a), Environmental Impact Statement Rules of the Department of Health, State of Hawaii, this disposition is exempt from requirements regarding preparation of an environmental assessment, negative declaration, or environmental impact statement as required by Chapter 343, Hawaii Revised Statutes, as amended, relating to Environmental Impact Statements, because the proposed action falls within Exemption Class #1, Comprehensive Exemption List for the State of Hawaii, Department of Transportation, dated November 15, 2000, as approved by the Environmental Quality Council. Exemption Class #1 covers operations, repairs, or maintenance of existing structures, facilities, equipment, or topographical features involving negligible or no expansion or change of use beyond that previously existing.


REMARKS:

In accordance with Section 171-55, HRS, relating to Permits, the Department of Transportation proposes to issue a month-to-month Revocable Permit to the Contractor awarded Project No. DB-450 (Airport Guideway and Stations Award Contract) by Hart, to stage construction equipment for the Honolulu Rail Transit Project.


RECOMMENDATION:

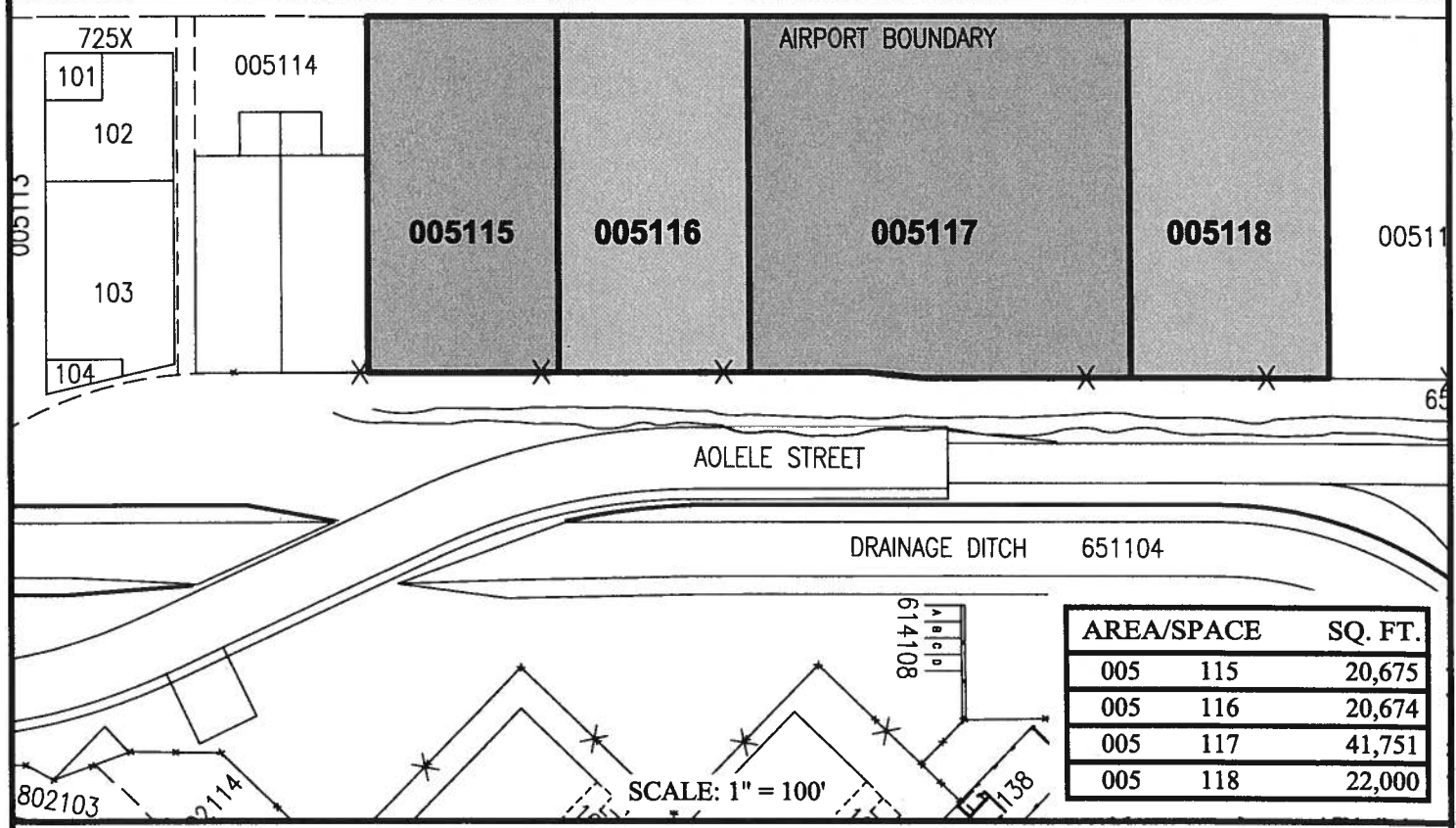
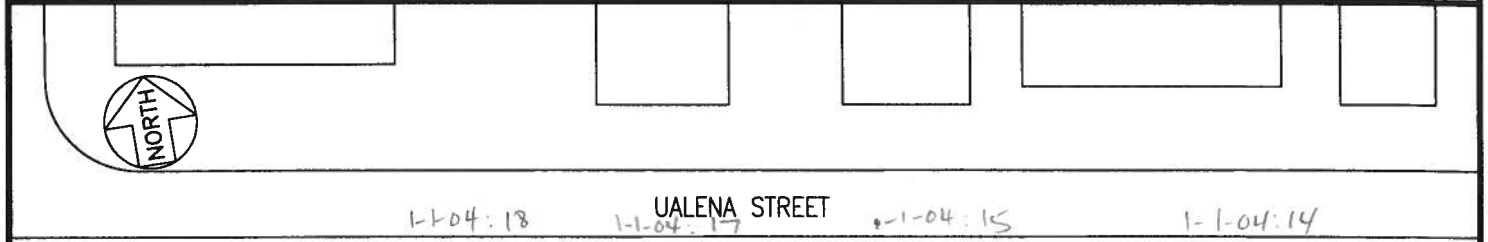
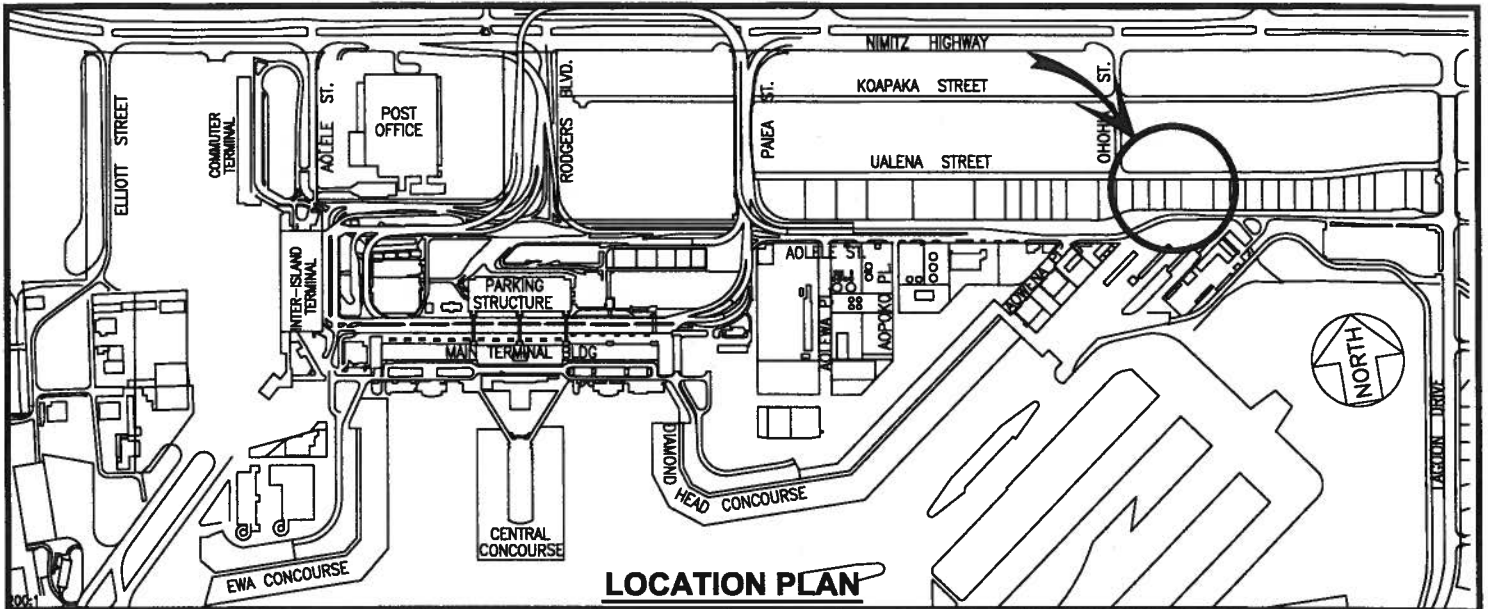
That the Board authorize the Department of Transportation authorize the issuance of a Revocable Permit, subject to: (1) terms and conditions herein outlined, which are by reference incorporated herein; and (2) such additional terms and conditions as may be prescribed by the Director of Transportation to best serve the interests of the State.

Respectfully submitted,


FOR FORD N. FUCHIGAMI
Director of Transportation

APPROVED FOR SUBMITTAL:


SUZANNE D. CASE
Chairperson and Member



DATE : JULY 2015

EXHIBIT: **A**



2815 - 2939
 UALENA STREET

005115-
 005118
 PLAT 16

HONOLULU INTERNATIONAL AIRPORT

N:\AIRPORTS\HNL_HONOLULU\CAD\PM\HNL_005115-01.DWG