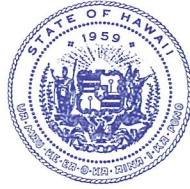


DAVID Y. IGE  
GOVERNOR



STATE OF HAWAII  
DEPARTMENT OF TRANSPORTATION  
869 PUNCHBOWL STREET  
HONOLULU, HAWAII 96813-5097

JADE T. BUTAY  
DIRECTOR

Deputy Directors  
LYNN A.S. ARAKI-REGAN  
DEREK J. CHOW  
ROSS M. HIGASHI  
EDWIN H. SNIFFEN

IN REPLY REFER TO:

Board of Land and  
Natural Resources  
State of Hawai'i  
Honolulu, Hawai'i

ISSUANCE OF A REVOCABLE PERMIT FOR A TRAINING ROOM AND  
ADMINISTRATIVE SPACE FOR FLIGHT SCHOOL OPERATION  
BARBERS POINT AVIATION SERVICES, LLC  
KALAELOA AIRPORT  
TAX MAP KEY: (1) 9-1-13: PORTION OF 103

O'AHU

REQUEST:

Issuance of a Revocable Permit for a training room and administrative space to Barbers Point Aviation Services, LLC, for its Flight School Operation situated at Kalaeloa Airport.

LEGAL REFERENCE:

Section 171-55, Hawai'i Revised Statutes (HRS).

APPLICANT:

Barbers Point Aviation Services, LLC, whose mailing address is  
91-1259 Midway Road, Building 104, Suite 1, Kapolei, Hawai'i 96707.

LOCATION AND TAX MAP KEY:

A portion of Kalaeloa Airport, Kapolei, Island of O'ahu, State of Hawai'i, identified by  
Tax Map Key: 1<sup>st</sup> Division, 9-1-13: portion of 103.

AREA:

Building/Room No. 104-B01, containing an area of approximately 967 square feet,  
as shown and delineated on the attached map labeled Exhibit "A".

**ITEM M-4**

BLNR – ISSUANCE OF A REVOCABLE PERMIT FOR A TRAINING ROOM AND ADMINISTRATIVE SPACE FOR FLIGHT SCHOOL OPERATION  
BARBERS POINT AVIATION SERVICES, LLC  
Page 2

ZONING:

State Land Use District: Urban  
City and County of Honolulu LUO: P-2 (To be rezoned in the future)

LAND TITLE STATUS:

Non-ceded land acquired from the U.S. Government by the State of Hawaii after Statehood DHHL 30% entitlement lands pursuant to Hawai'i Admission Act YES \_\_\_ NO X

CURRENT USE STATUS:

Land presently encumbered by Governor's Executive Order No. 3861, setting aside Kalaeloa Airport under the control and management of the Department of Transportation, Airports Division (DOTA), State of Hawai'i, for Airport Purposes.

CHARACTER OF USE:

Barbers Point Aviation Services, LLC, will use the space for a training room and administrative space for its Flight School Operation.

COMMENCEMENT DATE:

To be determined by the Director of Transportation at a later date.

MONTHLY RENTAL:

\$1,402.15 (\$1,257.10 as determined from the DOTA schedule of rates and charges established by appraisal of Airports property statewide, plus \$145.05 for electricity).

SECURITY DEPOSIT:

Three (3) times the monthly rental in effect.

DCCA VERIFICATION:

Place of business registration confirmed:	YES <u>X</u>	NO ___
Registered business name confirmed:	YES <u>X</u>	NO ___
Good standing confirmed:	YES <u>X</u>	NO ___

BLNR – ISSUANCE OF A REVOCABLE PERMIT FOR A TRAINING ROOM AND  
ADMINISTRATIVE SPACE FOR FLIGHT SCHOOL OPERATION  
BARBERS POINT AVIATION SERVICES, LLC

Page 3

CHAPTER 343, HRS - ENVIRONMENTAL ASSESSMENT:

The subject land area is covered by the Final Environmental Assessment for the Kalaeloa Airfield Development Plan Improvements, State Project No. AO5011-02 dated June 2010. This Environmental Assessment was prepared by Wilson Okamoto Corp. for the State of Hawai'i, Department of Transportation, Airports Division, in part to evaluate the environmental effects of the recommended Kalaeloa Airfield Master Plan to meet existing and forecast general aviation demands.

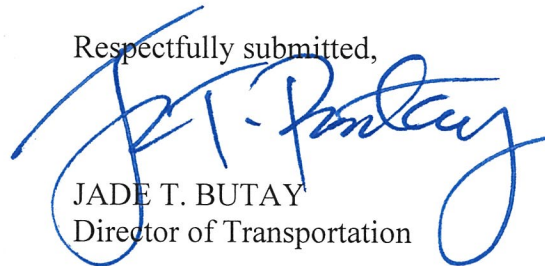
REMARKS:

In accordance with Section 171-55, HRS, relating to Permits, the Department of Transportation proposes to issue a month-to-month revocable permit to Barbers Point Aviation Services, LLC, for a training room and administrative space for its Flight School Operation at Kalaeloa Airport.

RECOMMENDATION:


That the Board authorize the Department of Transportation to issue a month-to-month Revocable Permit to Barbers Point Aviation Services, LLC, subject to: (1) terms and conditions herein outlined, which are by reference incorporated herein; and (2) such additional terms and conditions as may be prescribed by the Director of Transportation to best serve the interests of the State.

Respectfully submitted,

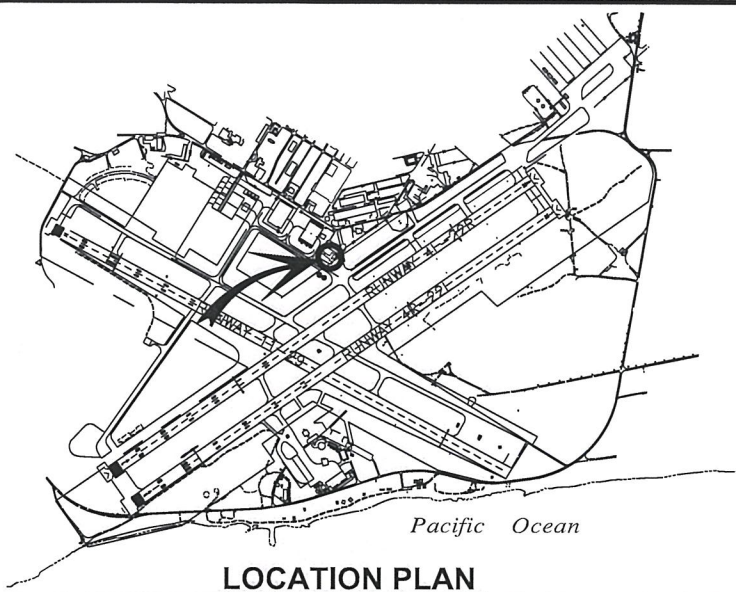


JADE T. BUTAY  
Director of Transportation

APPROVED FOR SUBMITTAL:

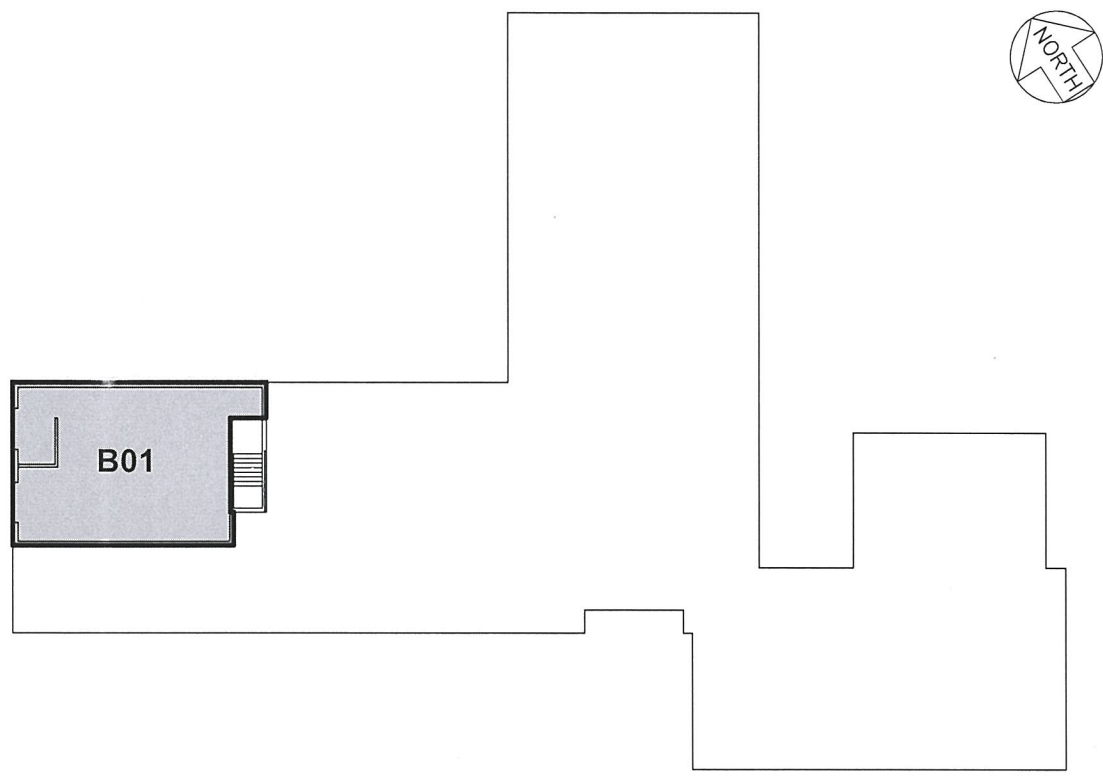


SUZANNE D. CASE  
Chairperson and Member



**LOCATION PLAN**

3000:1



**BLDG 104**

SCALE: 1" = 30'

BLDG/ROOM	SQ. FT.
104 B01	967

RP-8865

DATE : FEBRUARY 2019

EXHIBIT: **A**



Airports Division

BARBERS POINT  
AVIATION SERVICES, LLC.

BUILDING 104  
OPERATIONS BUILDING  
BASEMENT LEVEL

104B01

**KALAELOA AIRPORT**

N:\AIRPORTS\JRF\_Kalaeloa\CAD\PM\jrf\_104b01-01\_draft.dwg