

**REPORT TO THE THIRTY-THIRD  
STATE LEGISLATURE OF HAWAII  
2026 REGULAR SESSION**

**RELATING TO THE WILDLIFE  
REVOLVING FUND FISCAL YEAR 2025**



Prepared by

THE STATE OF HAWAII  
DEPARTMENT OF LAND AND NATURAL RESOURCES

In response to Section 183D-10.5, Hawai'i Revised Statutes

December 2025

## **RELATING TO THE WILDLIFE REVOLVING FUND FISCAL YEAR 2025**

### **PURPOSE**

The goal of the Wildlife Revolving Fund (WRF) is to provide funding to manage and improve public hunting opportunities in Hawai'i. Act 290, Session Laws of Hawai'i 1991, amended Section 183D-10.5, Hawai'i Revised Statutes (HRS), by adding a requirement for an annual report to be prepared by the Department of Land and Natural Resources (Department) on the status of the WRF and sent to the Legislature no later than twenty days before each regular session begins. Reporting requirements include:

1. The source and use of funds deposited into the account, including a description of the criteria and process used to determine funding priorities.
2. A description of programs and activities supported by the fund.
3. A summary of the program's highlights and accomplishments.
4. A summary of upcoming program plans, outlining clear goals and objectives.

### **FUNDS**

Section 183D-10.5(b), HRS, states that the following proceeds shall be retained by or sent to the Department for deposit into the WRF.

- Funds collected as fees for hunting licenses, participation in hunter education training programs, and usage of public target ranges.
- Money collected under laws related to the importation, taking, catching, or killing of game, wildlife, and their products.
- Monies, other than informers' fees authorized under Section 183D-11, HRS, collected as fines or bail forfeitures for violations of Chapter 183D, HRS, or any provision of Chapter 195D, HRS, concerning wildlife conservation; and
- Money received from the sale of:
- Any article, in addition to a hunting license, that a person is required to purchase from the Department to hunt, when the requirement is established by law or rule; and
- Any artwork on which the article under A is based.

For Fiscal Year (FY) 2025, the primary source of revenue was the sale of hunting licenses, followed by the sale of game tags. Revenues remained below the Department's authorized budget ceiling for the WRF of \$912,795.00. New expenditures totaled \$908,533.34. The unencumbered cash balance at the end of FY 2025 was \$317,834.04, with outstanding encumbrances of \$312,980.13.

**Status of S-343**

Beginning cash balance of fund on July 1, 2024.	
\$630,814.17	
Revenues during FY 2025	\$654,953.17
Expenditures during FY 2025	
(\$908,533.34)	
Unencumbered ending cash as of June 30, 2025	
\$630,814.17	
Encumbrances as of June 30, 2025	
(\$312,980.13)	
Expired encumbrances from prior years	
\$29,713.85	
Unencumbered cash for carry over as of June 30, 2025.	
\$317,834.04	

**Summary of Revenues FY 2025**

Hunting guide license	
\$1,725.00	
Game bird farmer licenses	\$325.00
Hunting licenses with wildlife conservation stamp	
\$419,173.00	
Wildlife Conservation stamps	
\$687.50	
Game bird stamps	\$51,749.00
Game tags	\$156,319.21
Interest and Refund /reimbursement of prior period expenditures	
\$2,400.00	
Investment Pool Account	\$22,439.46

**Total Revenue for FY 2025****\$654,953.17****Summary of Expenditures FY 2025**

Personnel	\$229,847.00
Operations	\$641,278.00
Admin costs	\$41,850.00

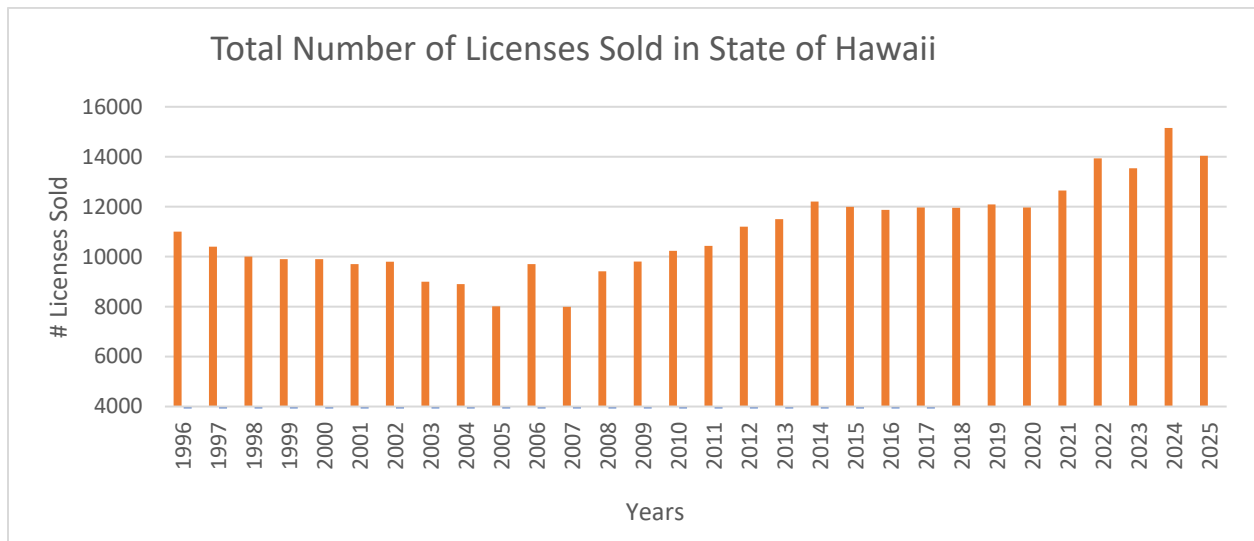
**Total Expenditures****\$912,975.00****Summary of Outstanding Claims FY 2025**

Operations Claims	\$370,222.18
Amount expended	\$57,242.05

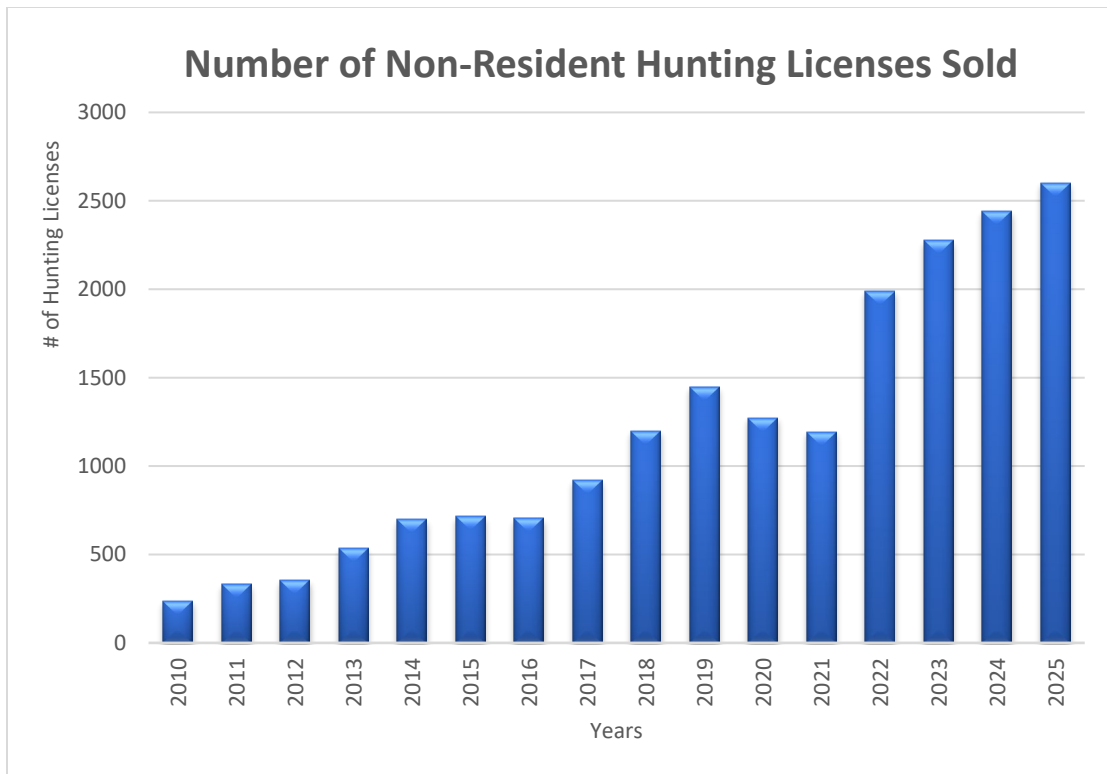
**Total remaining balance of outstanding claims and contracts****\$312,980.13**

## **HUNTING LICENSE SALES OVERVIEW**

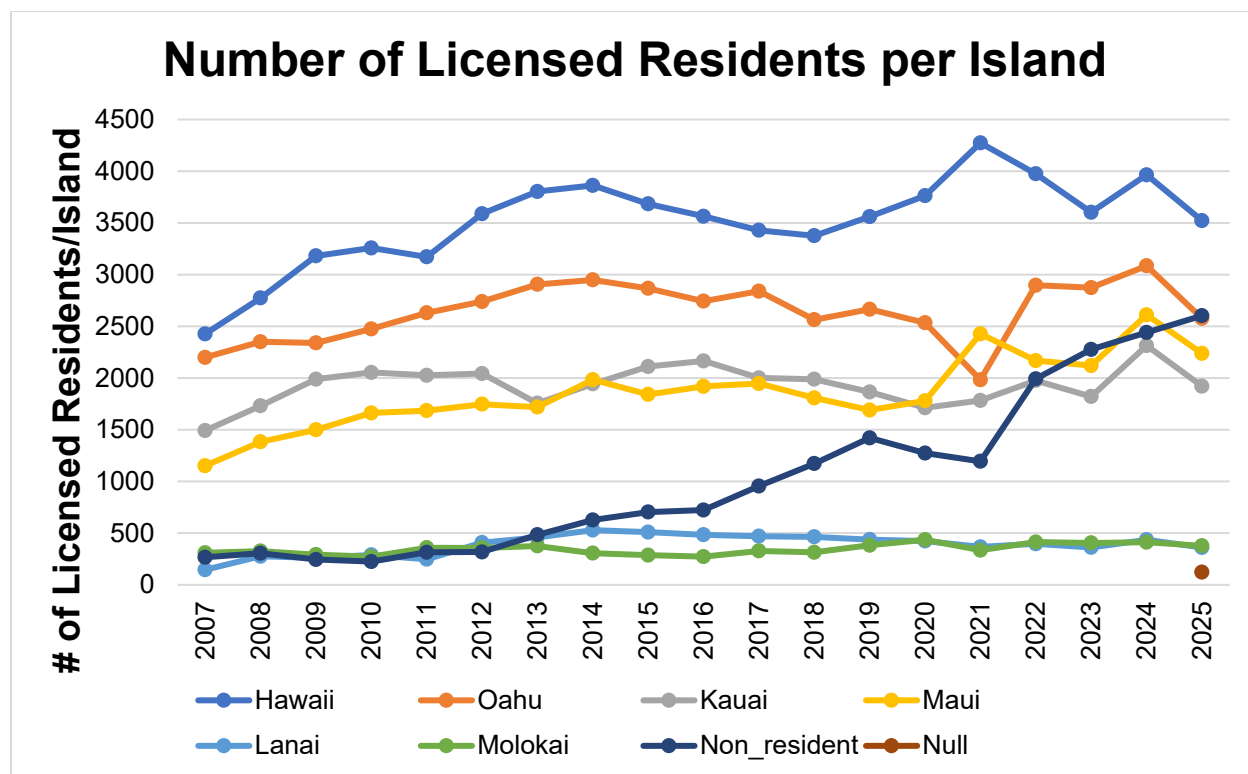
Overall, Hawai'i hunting license sales and non-resident license sales have shown an increasing trend since hitting a low in 2005 and 2007 (Figure 1 and 2). Revenue from license sales is deposited into the WRF and used to support wildlife management and hunting programs. In FY 2025, a total of 14,041 hunting licenses were sold, marking a decrease from the previous year. During this year, hunting tags sold exceeded the sales of game tags.



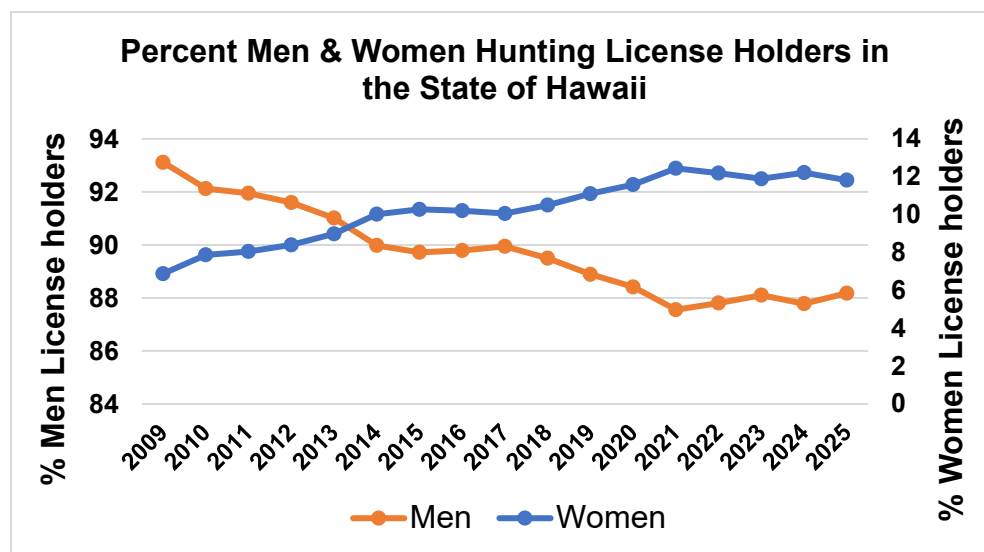
**Figure 1.** The total number of hunting licenses sold in the State of Hawai'i per fiscal year (1996 – 2025).



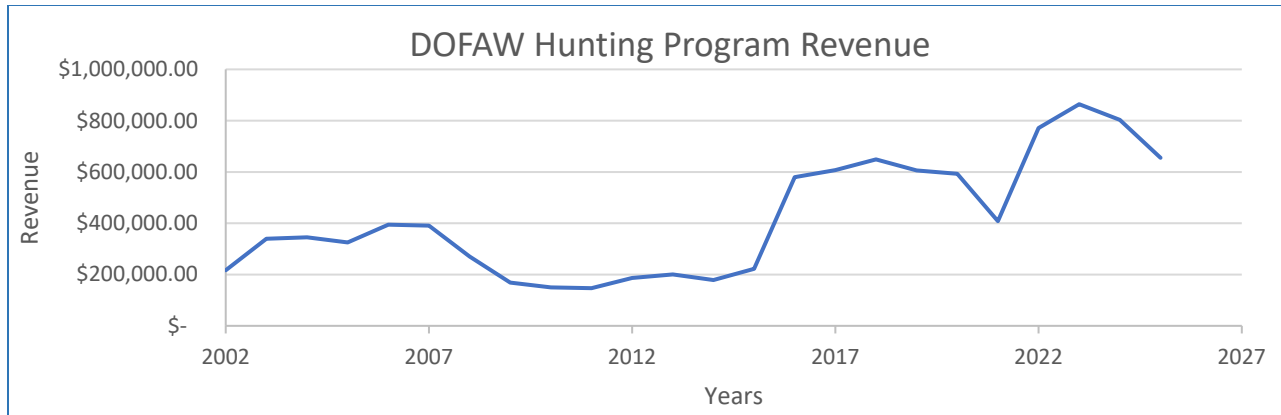
**Figure 2.** The total number of non-resident hunting licenses sold per fiscal year (2010 – 2025).



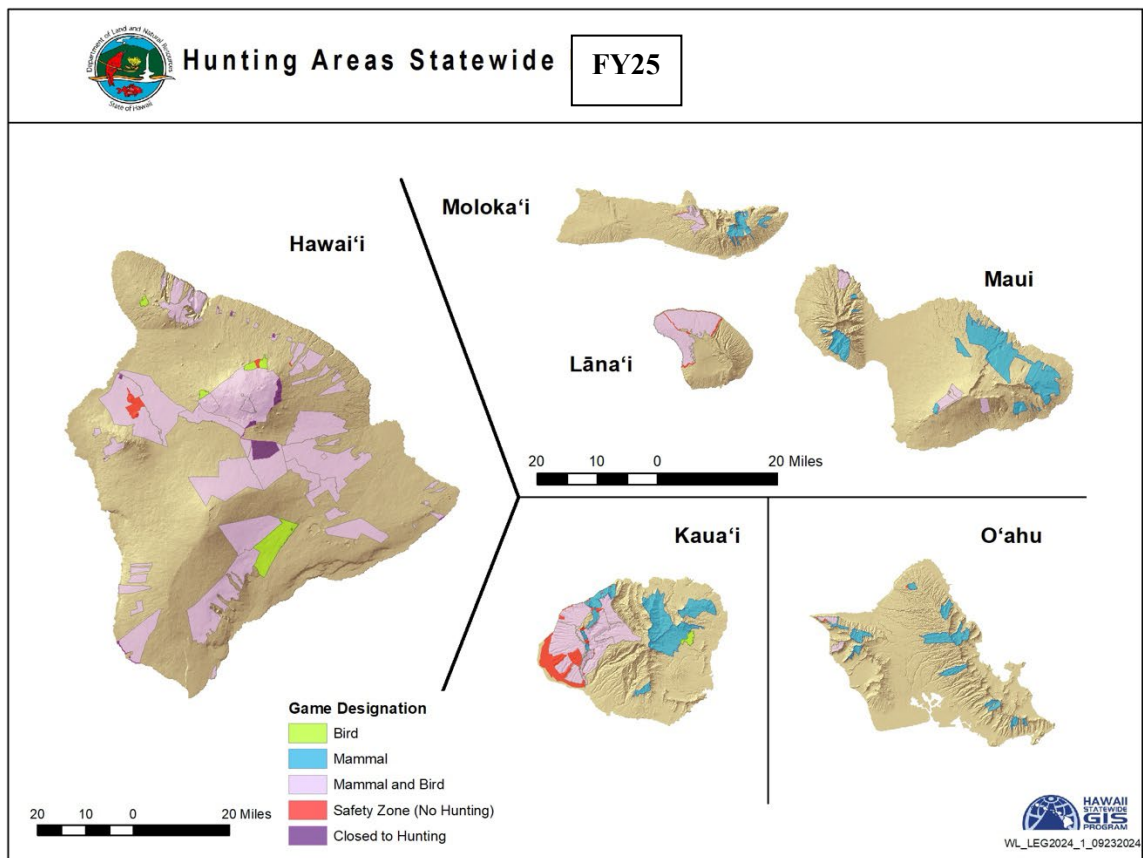
**Figure 3.** The total number of residents with a hunting license per island for fiscal years 2007– 2025.



**Figure 4.** Percent men and women license holders in the State of Hawai'i for fiscal year 2009 – 2025.



**Figure 5.** Revenue derived from the WRF for fiscal year 2002– 2025.



## **KAUA'I BRANCH (for maps and photos, see Exhibit 1.)**

**Objectives:** Preserve and improve wildlife habitats and facilities on public hunting areas, game management areas, and wildlife sanctuaries. Expand opportunities for hunting game birds and game mammals.

**Accomplishments:** Funding was used to manage habitat for game birds and maintain infrastructure designed to support game bird hunting. For details on specific activities, see the following:

### 1. Gamebird Propagation:

- Breed, hatch, rear, and release.
- Construct and maintain watering units, brooder, and fly pens.
- Buy food and supplies to care for live birds.

### 2. Habitat Management and Operations:

- Repaired and maintained tractors, mowers, and equipment used for road and habitat maintenance activities (Kekaha GMA, Wailua GMA, and Unit L).
- Purchased supplies for power tools used to maintain access infrastructure and roads.
- Purchased materials to build a 40'x40' cement pad parking space to properly store and extend the lifespan of heavy equipment used for habitat management.

### 3. Game Bird Propagation:

- Released 744 male pheasants, 482 female pheasants, and 105 chukars throughout the 2024-25 Kauai gamebird season. Successfully bred, hatched, and reared 800 ringneck, melanistic mutant, and hybrid (ringneck/mutant) pheasants and 250 Chukars for the upcoming 2025-26 game bird season. Successfully bred, incubated, and shipped 700 day-old pheasant chicks to Hawaii Island, 500 day-old pheasant chicks, and 200 day-old chukar chicks to Maui. Birds will be released every few weeks during the game bird hunting season in the Kekaha and Wailua GMA. Built a new fly pen in Kekaha GMA for quail and chukars.

### 4. Future Program Plans:

- Fund a Wildlife Technician position to handle tasks related to the ongoing management of public hunting areas—\$75,000 (100% WRF). This role will support the game management Wildlife Biologist in field operations.
- Purchase equipment and supplies necessary for ongoing operations and maintenance in wildlife management areas, including a 1000-gallon water trailer, redwood tank liner, and hydraulic post pounder - \$40,000 (100%



WRF).

- Purchase incubation and brooding supplies, and feed to propagate up to 1,000 ring-necked pheasants and other game bird species annually - \$30,000 (100% WRF)

### **O'AHU BRANCH (for maps and photos see Exhibit 2.)**

**Objectives:** Maintain and enhance wildlife habitat and facilities on public hunting areas, game management areas, and wildlife sanctuaries; and improve game bird and game mammal hunting opportunities.

**Accomplishments:** Funding was used to manage habitat for game birds and maintain infrastructure designed to support game bird hunting. For details on specific activities, see the following:

#### **1. Staff:**

- Funded a biological technician through the Research Corporation of the University of Hawai'i (RCUH) to assist with various game-related projects, including:
  - Process and issue permits for ungulate control and hunting opportunities in forest reserves and other state lands that are not open to public hunting.
  - Assist with the operation of a game bird propagation project.
  - Manage game bird releases and coordinate hunter volunteer opportunities.
  - Maintain access locks and gates to manage hunting areas.
  - Maintain digital profiles for public hunting units using the OuterSpatial smartphone app.
  - Maintain predator trap lines in Game Management Areas and game-managed facilities.
  - Collect and process hunter check station data for analytical reporting.
  - Maintain all check station facilities and perform vegetation control at each site.

#### **2. Habitat Management and Operations:**

- Repaired and maintained tractors, mowers, and equipment used for road and habitat maintenance activities. Purchased supplies for power tools used to maintain access infrastructure and roads. Repaired and maintained the Wildlife Program side-by-side (Polaris Ranger), which is critical for accessing remote and less-accessible areas for management.
- Acres currently managed with heavy equipment for public hunting and habitat enhancement in Kuaokalā GMA:
  - Forest Section – 26 acres

- Ranch Section – 25 acres
- Acres Managed by Cattle Cooperative Agreement in Kuaokalā GMA:
  - Ranch Section – 260 acres
- New Expansion of habitat in Kuaokalā GMA in FY25:
  - Ranch Section – 0.5 acres

### 3. Game Bird Propagation:

- The two Kawainui Fly Pens were maintained and repaired throughout the year. Additional chicken wire fencing was added to prevent predators from entering. New 30'x60' tarps were installed for the fly pen roof, providing better protection from the elements and safeguarding the interior habitat. New fly pen netting was purchased to keep in stock for full facility replacement. (Figure 8)
- The Waialua Farm currently hosts the following facilities for the game bird rearing project run by volunteer hunters:
  - (3) Fly Pens
  - (6) Breeder Pens
  - (1) Feed/Storage House
  - This year, supplies were purchased to prepare for a complete overhaul of the fly pen facilities. Replacement fly netting and EZ corner framing were purchased for use the following year. Some supplies included materials for repairing the predator-proof fencing for the fly pens and breeder pens. The Feed House also received funds to build a storage extension for project-related equipment.
- The program purchased game bird feed for different stages of the raising project. Feed includes broiler starter, scratch feed, broiler finisher, bedding, and feeder/waterer equipment.
 

○ Broiler Starter Feed (50lbs) bags:	32	\$960.00
○ Broiler Finisher Feed (50lbs) bags:	379	\$11,370.00
○ Scratch Feed (50lbs) bags:	03	\$90.00
○ <u>Bedding COB (50lbs) bags:</u>	<u>00</u>	<u>\$0.00</u>
○ Total:		<b>\$12,420.00</b>
- For the 2024-2025 Game Bird Season, Oahu DOFAW successfully imported a total of 834 game birds.
  - (416) Manchurian Ring-necked Pheasants
  - (208) Melanistic “Blue” Pheasants
  - (208) Jumbo Ring-necked Pheasants

### 4. New Hunting Areas and Access:

- Purchasing signage and other miscellaneous equipment to organize special hunts or open new state-managed areas under a Wildlife Control Hunt program.
- Oahu Division of Forestry and Wildlife-Game Program: Wildlife Control Permit System
  - Wildlife Control Permit Managed Areas
    - Waimanalo Forest Reserve (Archery Only)
    - Waianae Kai Restricted Watershed (Archery, Firearm, & Dog/Knife)
    - Pia Valley – Natural Area Reserve (Archery Only)
    - Moanalua Section – Honolulu Watershed Forest Reserve (Archery Only)
    - Manoa-Tantalus – Honolulu Watershed Forest Reserve (Archery Only)
    - Honouliuli Forest Reserve (Archery and Dog/Knife)
    - Honouliuli Forest Reserve (Archery and Dog/Knife)

• **Oahu’s Wildlife Control Permit – FY25 Summary Report**

<b>Issued Permits</b>		<b>Check-Ins</b>		<b>Pigs</b>	
	72		1082		210

5. Future Program Plans:

- Restore revenue from the sale of hunting tags, stamps, and fees, and establish an Operations position.
- Fund a Wildlife Technician position to handle tasks related to the ongoing management of public hunting areas—\$25,000 (100% WRF). This role will support the game management Wildlife Biologist in field operations.
- Purchase equipment and supplies necessary for ongoing operations and maintenance in wildlife management areas - \$15,000 (100% WRF).
- Propagate and release 500 ring-necked pheasants and/or other game bird species each year - \$10,000 (100% WRF).
- Upgrade facilities and equipment to enhance the housing of the Game Bird Rearing Program for greater overall project success and efficiency.

- Enhance parking for game bird hunting areas to accommodate the increased number of users.

### **MAUI BRANCH (for maps and photos, see exhibit 3.)**

**Objective:** Provide 30,000 acres of land on Lānaʻi for sport hunting and wildlife management.

**Accomplishment:** The annual lease rent for the Lānaʻi Cooperative Game Management Area (CGMA) was paid using Wildlife Revolving Fund (WRF) funds.

#### **1. Lease of Cooperative Game Management Area - Lānaʻi**

- This area offered hunters the chance to pursue Axis deer, Mouflon sheep, and various game birds.

**Objective:** Perform annual helicopter surveys of game mammals in the Lānaʻi CGMA and private areas of Lānaʻi Island (Pulama Lānaʻi).

**Accomplishments:** The 2024 fall game mammal aerial survey on Lanai was conducted on September 9, 2024 (LCGMA) and September 10, 2024 (Pulama Lanai). The 2025 spring game mammal survey took place on March 3, 2025 (LCGMA) and March 4, 2025 (Pulama Lanai).

#### **2. Game Mammal Aerial Survey - Lānaʻi**

- Surveys conducted on the state-managed portion of Lānaʻi are used in part for setting upcoming bag limits.
- Staff from Maui led the survey effort for both the fall and spring surveys.
- The aerial survey data from both surveys were used for the 2025 hunting seasons, which included adjustments to bag limits.
- A helicopter was rented to conduct the fall survey.
- Travel expenses for staff traveling from Maui to conduct surveys were charged to the wildlife revolving fund.

**Objective:** Maintain and service facilities and field operations on Lānaʻi through the Forestry and Wildlife Worker II position. Ensure the hunter check station remains open beyond normal hours to allow the public to check in and purchase game tags.

**Accomplishments:** A Forestry and Wildlife Worker II position on Lānaʻi, funded by the WRF, supported the Forestry and Wildlife Technicians in maintaining and caring for project facilities.

#### **3. Personnel Expenses - Lānaʻi**

- Maintenance of 30 miles of water unit pipeline
- Maintenance of 25 water units
- Maintenance of a multitude of signs
- Maintenance of 45 miles of access roads in the CGMA.
- The Forestry and Wildlife Worker II also assisted with habitat management, surveys of game birds and mammals, enclosure upkeep, predator control, and other duties necessary to support both the game and non-game programs on Lanai.
- The associated overtime costs resulted from the hunter check station hours being extended beyond normal operating times.

**Objectives:** Provide the public with the opportunity to apply online for hunts. Conduct fair and equitable lotteries for both the Axis deer and Mouflon sheep hunts on Lanai. Mail application cards, including lottery results, to all online applicants. Issue hunters the necessary tags and approval forms required for hunting on Lānaʻi. Maintain and improve the online application system and lottery program. Meet with Pulama Lanai to review and discuss upcoming public hunting opportunities.

**Accomplishments:** Hunters interested in participating in the state-managed hunts on Lanai were required to submit their applications online.

#### 4. Management of the Lottery Hunts - Lānaʻi

- Annual service fees were paid to the host of the online platform for Lanai hunt applications.
- Lotteries were held for both the Mouflon sheep and Axis deer hunts at the MEO facility in Wailuku, and all successful applicants received an application card in the mail.
- Permit cards were issued for both the 2024 Mouflon sheep hunt and the 2025 Lanai Axis deer hunt, indicating the weekend a hunter was selected.
- Additional axis deer and mouflon sheep blank cards were bought as duplicates in case hunters either lost their original cards or never received them in the mail.
- Axis deer and mouflon sheep tags were purchased during the fiscal year to comply with rules and regulations for both hunts on Lanai.
- First-class stamps were purchased and used to mail permit cards to successful applicants.
- The GoHunt website was updated to clearly show active hunts and upcoming hunt application openings.
- On October 10, 2024, DOFAW staff met with Pulama Lanai to review the budget, discuss upcoming game bird and game mammal projects, and

address upcoming hunts and issues related to the state hunting program on Lanai.

**Objectives:** Acquire materials and equipment needed for the Maui Nui hunting program to operate effectively.

**Accomplishments** include renting dumpsters during the Axis deer and Mouflon sheep seasons to help hunters dispose of carcasses. Ensure vehicles are maintained and operational. Support travel to Lānaʻi for meetings and to outer islands for game-related discussions. Rent a portion of the Quonset hut for storage of supplies and materials. Purchase supplies for the office and hunter check station to enable staff to assist the hunting public. The Lānaʻi office and hunter check station used funds to install a new split AC unit after the old system failed. Hire a cleaning service for the Lānaʻi office to keep it clean. Support other aspects of maintaining the hunting program for Maui County. Purchase pheasant chicks and necessary supplies to release into public hunting areas for game bird enthusiasts. Rent a helicopter and buy sedative drugs to support satellite collar operations for axis deer and Mouflon sheep on Lānaʻi. Purchase computers for wildlife staff. Support the purchase of a vehicle in Maui County.

#### 5. Game Mammal Facilities Operations and Maintenance – Maui District

- Dumpsters were rented for the Axis Deer and Mouflon Sheep hunts, providing the hunting community with facilities to dispose of animal carcasses.
- Hardware items were purchased to support infrastructure within the Lanai Cooperative Game Management Area.
- Supplies and materials for water units were purchased and shipped to Lanai to repair any units that showed wear, tear, or damage.
- Vehicle repairs were charged to this fund, ensuring staff vehicles remained available and well-maintained for wildlife projects and facility upkeep.
- Office supplies were purchased to ensure the office was adequately stocked to better serve the public. The new split AC system provided suitable working conditions in the Lanai office, allowing wildlife staff to work comfortably for extended periods while serving the public. A cleaning company was hired to clean the Lanai office and the hunter check station.
- Two hundred fifty Chukar chicks and 500 ring-necked pheasant chicks were purchased and will be raised by volunteers. Of those purchased, about 150 chukars and 400 pheasants will be released on public hunting areas within Maui Island. To support the raising of pheasant chicks, feed was purchased for the individuals who were raising them.
- During the 2025 fiscal year, 12 ungulates were satellite-collared on the island of Lanai. One doe, five bucks, four ewes, and two rams were successfully fitted with collars and are currently being tracked for movement patterns. An annual subscription was purchased to monitor satellite-collared ungulates within Maui Nui.

- New laptops were purchased for staff on Maui. Outdated laptops on Maui made accessing data and report writing difficult.
- A new 4x4 truck was bought to be used for supporting wildlife operations on the island of Maui.

#### 6. Future Program Plans

- Fund rental of lease on Lānaʻi - \$1,000 (100%WRF).
- Fund the Forestry and Wildlife Worker II position on Lānaʻi for facility upkeep and maintenance: \$85,000 (100% WRF).
- Fund Lānaʻi check station overtime for Forestry and Wildlife Technician V and IV positions - \$5,000 (100% WRF).
- Fund game mammal surveys on Lānaʻi - \$20,000 (100% WRF).
- Fund management of lottery hunts on Lānaʻi; document printing, data input, updating, and improving online application and computer-generated lotteries and drawings -\$5,000 (100% WRF).
- Fund game mammal facilities development, operations, and maintenance on Lānaʻi -\$50,000 (100% WRF).
- Purchase truck - \$75,000 (75% WRF).
- Fund road repairs – \$50,000 (75% WRF)
- Fund vehicle repairs and maintenance - \$25,000 (50% WRF)
- Helicopter rental for satellite collar operations - \$20,000.00 (100% WRF)
- Fund the purchasing and feeding of game birds to be released within Maui Nui - \$10,000.00 (100% WRF).
- Fund overtime for staff on Maui and Molokai – \$15,000 (100% WRF)

#### **WEST HAWAIʻI (for maps and photos, see exhibit 4.)**

**Objectives:** Estimate the populations of sheep and goats in public hunting units E (Puu Anahulu GMA) and F (Puʻu Waʻawaʻa Forest Reserve).

**Accomplishment:** A game camera trap study was successfully completed for both units E and F.

#### 1. Game Mammal Surveys

- An estimated 80 game cameras were deployed in Spring FY25.
- Brigham Young University has delayed analyzing FY24 data; however, the results are expected by Winter 2025.

**Objectives:** Support the hunting of game birds and boost game bird populations through the rearing and release of select game birds in the PHA.

**Accomplishment:** Imported day-old pheasant chicks were released in game bird hunting units. Built additional game bird facilities to assist in the brooding and rearing of game birds.

## 2. Game Bird Rearing and Release Program

- In FY24, we assisted Kanu o Ka Aina New Century Public Charter School in developing a game bird rearing program.
- DOFAW released 200 pheasants in Fall 2024.
- We built a second fly pen at the Kamuela DOFAW base yard to help raise 200 pheasants for release in Fall 2025.

**Objective:** Assist native and game bird populations by trapping and removing mongooses and cats at Pu'u Wa'awa'a Forest Reserve.

**Accomplishment:** Trap lines and control efforts were maintained throughout sections of the forest reserve, resulting in the removal of both mongoose and feral cats.

## 3. Predator Control Program

- In FY25, the wildlife revolving fund allocated funds to support a 0.5% FTE general labor position dedicated to predator control in the Pu'u Wa'awa'a Forest Reserve.
- Consequently, we trapped and removed 241 mongoose and seven cats. It has been approximately three years since any predator control occurred in the area.

## 4. Future Program Plans

- Support an MS candidate to develop an Artificial Intelligence protocol to speed up analysis of annual sheep and goat surveys using camera trap data (\$15,000 20% WRF).
- Support game bird facilities and game bird rearing activities (\$2,000 100%WRF)
- Expand and improve game bird release program (\$2,500 100% WRF).
- Improve game bird habitat on Mauna Kea.

## **EAST HAWAI'I (for maps and photos, see exhibit 4.)**

**Objectives:** Maintain and enhance wildlife habitat and facilities on public hunting areas, game management areas, and wildlife sanctuaries; and improve game bird and game mammal hunting opportunities.



**Accomplishments:** Funding was used to manage habitat for game birds and maintain infrastructure designed to facilitate game bird hunting. For specific activities, see the following:

1. Game Bird Propagation and Release:

- During FY25, East Hawaii WLRF was mainly used to maintain and enhance the program's ability to rear and release game birds. This supported breeding stock in public hunting areas and provided huntable birds during the hunting season. Here are more details on how the funds were utilized:
  - Purchased a second cabinet incubator to increase program capacity to incubate and hatch game bird eggs.
  - Raise and maintain breeding stock of ring-necked pheasants and chukar partridges to produce program-sourced eggs for incubation, hatching, and chick rearing.
  - Purchased miscellaneous rearing supplies to support the rear/release program, such as feed, feeders, waterers, bedding, heat lamps, seed, etc.
  - Purchase building materials to build a third flight pen at the Pōhakuloa Pens on Hawaii Island.
  - Purchase materials and supplies, like replacement netting, to keep existing flight pens in proper working condition.
  - Purchased new game bird transportation boxes.
  - This year, we also designed and purchased program shirts for volunteers assisting with the game bird propagation and release program (see photo below).

2. Game Bird Habitat Management and Facilities Management

- FY25 WLRF funds were used to partially finance contract work to replace approximately 700 meters of fencing and gates around the Pōhakuloa Pens and Cabin Area, aiming to enhance security, improve game bird habitat projects, such as growing game bird habitats and providing supplemental water units, and increase project opportunities.

3. Future Program Goals

- Maintain the current game bird rear/release project by buying feed, importing birds from mainland hatcheries, and purchasing maintenance supplies and materials for facilities.
- Support game habitat improvement projects like mulching, supplies, construction of supplemental water units, and others.

### **ADMINISTRATION (*for maps and photos, see exhibit 5.*)**

**Objectives:** support and sustain a recreational public hunting program that does not threaten the survival of native species and ecosystems in Hawaii. Public hunting offers an effective tool for controlling game mammals on public and private lands where management is needed, especially when resources are limited. The Hawaii Division of Forestry and Wildlife (DOFAW) public hunting program facilitates hunting on public and private lands through a structured system that encourages participation. The program aims to steer hunting away from ecologically sensitive areas while providing organized access for hunters to more remote or pristine sites, where recreational hunting can aid in managing game mammal populations.

The Game Program Planning and Coordination section provides staff and procedures to ensure that the State meets its responsibilities for participation in the Federal Assistance program, including long-term planning, compliance, recordkeeping, reporting, field staff supervision, and coordination of game Federal Assistance activities with the Service and other State and agency programs. Coordination of State and Federal funds for the program helps ensure continued participation in the Pittman-Robertson Federal Assistance program and thereby improves hunting, increases sport hunting opportunities, protects and enhances wildlife habitat on both public and private land, improves the integration of game management activities with other compatible or competing uses, and provides information on the wise management and appropriate use of game species.

#### **1. Notification of Hunting Season Openings and Changes**

- Several legal notices announcing new animal control opportunities for hunters were issued, along with a series of announcements and news releases for hunting seasons throughout the year. All lottery hunts were held on Lanai for FY 2025. All other statewide hunting options were available in accordance with the division's hunting regulations. Visit our hunting announcement page: <https://dlnr.hawaii.gov/recreation/hunting/hunting-announcements/>
- On March 8, 2024, the Hawai'i Board of Land and Natural Resources (BLNR) approved temporary adaptive management rule changes for hunting on Hawai'i Island, effective March 18, 2024. These changes were enacted under HRS § 183D-3(b) to address rapidly changing resource conditions and are set to remain in effect for up to two years, with the possibility of a one-year extension upon legislative approval. The amendments relate to two key areas.

- Game Mammal Hunting (HAR § 13-123): Modifications to Exhibit 11, which includes authorized hunting methods, daily bag limits, hunting periods, and special conditions for game mammals on Hawai'i Island.
- Game Bird Hunting (HAR § 13-122): Changes to Exhibit 1, covering regulations for game birds, including bag limits, hunting periods, and special conditions.
- Additionally, hunting tags for the Pu'u Wa'awa'a and Pu'u Anahulu units became available on January 1, 2024. The adaptive management rule changes for these areas will take effect at the end of the tagged hunting season, around September 23, 2024, honoring hunters who have already purchased their tags for the season.
- On October 11, 2024, the Hawai'i Board of Land and Natural Resources (BLNR) approved temporary adaptive management rule changes for hunting on Maui Island, effective October 21, 2024. These changes were enacted under HRS § 183D-3(b) to address rapidly changing resource conditions and are set to remain in effect for up to two years, with the possibility of a one-year extension upon legislative approval. The amendments pertain to:
  - Unit C (Kula and Kahikinui Forest Reserves): Feral goats and pigs may be taken with rifles, shotguns, or archery, and axis deer with rifles, shotguns, muzzleloaders, or archery. Dogs are not allowed. There are no daily or seasonal bag limits; hunting is permitted year-round daily except on legal bird hunting days.
  - Unit D (Makawao Forest Reserve): Feral pigs and goats may be hunted with rifles, shotguns, or archery; dogs are permitted. Axis deer may be hunted with rifles, handguns, muzzleloaders, shotguns, or archery. No daily or seasonal limits. Hunting is allowed daily year-round, but reservations are required for vehicular access to portions of the forest.
  - Unit E (Portions of Kula Forest Reserve – Archery Only): Feral pigs, goats, and axis deer may be hunted with archery; dogs are not allowed. There are no bag limits, and hunting is permitted daily year-round. Firearms are prohibited because the area is a state recreational area.
  - Overall, hunting is mostly unrestricted regarding bag limits, but specific methods, dog use, firearm restrictions, and access rules differ by unit to promote safety and sustainable management.
- In February 2025, the Hawai'i Division of Forestry and Wildlife (DOFAW) finalized adaptive management rule changes for Unit F on Kaua'i, effective April 7, 2025. These updates, authorized under HRS § 183D-3(b), aim to respond to rapidly changing resource conditions by adjusting hunting regulations to better manage game populations.
  - Summary of Rule Changes:
    - Open Hunting Days: The hunting days in Unit F have been

expanded from four days a week (Fridays, Saturdays, Sundays, Mondays, and State Holidays) to seven days a week (daily) during the open hunting periods.

- Game Mammals to be Taken: The primary game mammals targeted are feral goats.
- Means of Take: Hunters are permitted to use archery or dog and knife methods only.
- Bag Limits: The limit is two goats per hunter per day.
- Open Hunting Periods:
  - February through May: Daily hunting with firearms is prohibited; archery only is allowed, and dogs are not permitted.
  - July through August: Limited to hunters with valid goat archery permits; hunting with firearms is prohibited; muzzleloaders only are allowed, and dogs are not permitted.
  - January and June: Permit required; hunting with firearms is prohibited; archery only is allowed, and dogs are not permitted.
- These rule changes are intended to stay in effect for two years, pending legislative approval and renewal by the Board of Land and Natural Resources. The goal is to better manage game populations and enhance the overall public hunting experience in Unit F on Kauaʻi.

## 2. Implementation of Communication Strategies to Improve Hunter Recruitment and Retention

- The quarterly informational newsletter is published as time permits. The *Go Hunt Hawaiʻi* newsletter aims to connect hunters and DOFAW resource managers. It is available online on the DOFAW website at <https://dlnr.hawaii.gov/recreation/hunting/go-hunt-hawaii-newsletter/>
- A listserv was established for those interested in receiving hunting-related updates, announcements, and newsletters. Currently, 14,217 people are signed up on this mailing list. People can sign up online at [dlnr.hawaii.gov/recreation/hunting/](https://dlnr.hawaii.gov/recreation/hunting/). Sign-up sheets are also available at all DOFAW offices and at every hunter education class.

## 3. Public Engagement in Game Management

- A significant part of our Game Bird Program relies on active public participation and dedicated volunteers. Before each game bird season begins, DOFAW staff work with hunters to conduct annual surveys in popular and heavily used hunting areas. Volunteer hunters also play a vital role in the ‘put-and-take’ program, helping at every stage—from breeding, incubating, and raising birds to releasing

them and mentoring new hunters. During the last game bird season, DOFAW staff on Hawai'i Island asked hunters to submit crop samples from harvested birds. These samples were analyzed to better understand the food sources of wild game birds. This partnership highlights the important role of volunteers; their contributions are essential to the program's ongoing success across O'ahu, Kaua'i, Maui Nui, and Hawai'i Island.

- The Department of Land and Natural Resources funds the Hawai'i Wildlife Center to support its operations, wildlife response efforts, and rehabilitation programs. This partnership improves the Center's ability to care for injured or displaced native wildlife, giving these animals a better chance to recover and return to their natural habitats.
- The allocated funds supported the Kau Forest Bird Survey analysis, conducted by the U.S. Geological Survey (USGS). This analysis provided vital data on the population status, distribution, and habitat use of native forest bird species in the Kau region. The information obtained from this survey is crucial for guiding conservation strategies, prioritizing management actions, and tracking the effectiveness of ongoing efforts to protect these vulnerable bird populations and their habitats.
- During this reporting period, the Hawai'i Game Management Advisory Commission (GMAC) held one meeting. On June 5, 2025, five members were present while two were absent, and Stanley Ruidas was unanimously elected Chair. The commission reviewed planning and funding needs for wildlife and game management plans across the islands, including updates to the Hawai'i Island game management plan draft. DOCARE provided updates on officer assignments and future training funding, and a letter of support for the DOCARE recruit academy was proposed. DOFAW presented an overview of ongoing game program activities, while commissioners discussed key concerns such as low game populations on Lanai, adaptive-management rule changes, public outreach improvements, and long-term planning for drought, population capacity, and private land access. Procedurally, the commission approved the February 2024 meeting minutes, explored ways to improve public access to GMAC documents, and adopted a recurring meeting schedule to ensure consistency.

#### 4. Administration

- State-wide Hunting License Sales Administration and Coordination
- Clerical staff helped with license sales and distributing information relevant for the upcoming season.
- Conducted a Conservation and Game Bird Stamp contest for a stamp to be used on the New Year's hunting license. Selected artists can receive up to a \$1000.00 award.
- Funds were allocated for travel reimbursements for the Game Management Advisory Commission. In addition to in-person meetings, virtual platforms were

also used. Future meetings will require an in-person option, and upcoming travel reimbursements will be processed through this fund.

- Public hunters participated in our statewide game bird rear and release project, which has been successful over the years with ongoing participation. Many relationships have been built through this program.
- The Division has contacted the public to gather comments on the proposed new public hunting areas.

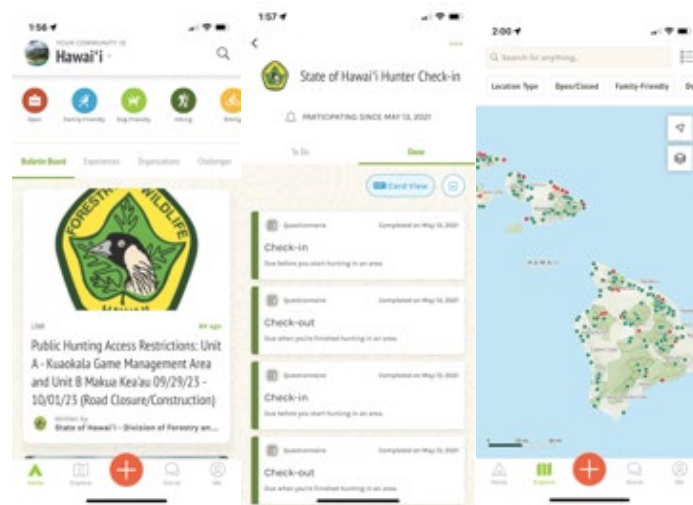
## 5. Explore Outdoor Hawaii Website

- The Explore Outdoor Hawai'i website serves as a central hub for hunters, anglers, and outdoor enthusiasts, offering streamlined access to resources, permits, and information about Hawai'i's public lands and recreational opportunities. It combines details on hunting regulations, game management areas, seasons, and licensing, while also providing tools for trip planning, safety tips, and educational content. By linking users directly to online applications, maps, and public notifications, the platform improves accessibility, enhances user experience, and encourages responsible and informed outdoor recreation across the islands.

## 6. Outdoor Hunting and Trails Mobile Application

- Continue contract administration and project development with Trailhead Labs, Inc., for maintaining and enhancing a hunting and trail program mobile app. The OuterSpatial mobile app was launched in July 2021. Hunters have been using the platform for electronic hunter check-in and harvest reporting features. Prior year funds supported this project. Over 3000 hunters have utilized the electronic hunter check-in, and thousands more are using the app for other recreational activities. <https://dlnr.hawaii.gov/dofaw/app/>

DOFAW has developed a DOCARE officer login for easy access to hunter check station data for enforcement purposes.



## 7. Electronic Hunting Tags and Permit System

- Continue project development with web vendor Tyler Technologies, Inc., regarding the online hunting tag and permit portal hosted on GOHUNT HAWAII. The new system was made available to the public for purchasing tags and permits in May 2022. Over 1000 online permits and tags were sold during FY25, generating estimated revenue of \$156,319.21. This provides a new, convenient way for hunters to acquire tags and permits. Revenues from the sale of hunting licenses and tags support this project. The system has been updated to include a shopping cart-style checkout, allowing hunters to purchase multiple tags at once without any convenience fees passed on to the user.

## 8. Planning documents, Agreements, and Research

- Ongoing planning and support for the Kanaio Forestry and Wildlife Area, Maui. DOFAW proposes establishing a Forestry and Wildlife Area on State and privately owned lands in southwestern Maui (Figure 1). The approximately 7,460.66-acre Kanaio Forestry and Wildlife Area (KFWA) would be located within the *ahupua'a* (traditional land divisions) of Kanaio, Kalo'i, Kaunuahane, and Papaka Kai in the traditional *moku* (district) of Honua'ula (now the district of Makawao) on the island of Maui [TMK: (2) 2-1-002:001 and 2-1-004:006]. The proposed KFWA is located on the southwestern flank of the shield dome volcano of Haleakalā. It is bordered to the north by the Pi'ilani Highway, to the west by 'Ulupalakua Ranch lands, to the east by the Auwahi wind farm, and extends to the south down to the shoreline. The proposed KFWA ranges from sea level to approximately 1,600 feet (500 meters) in elevation and contains highly disturbed habitats with pockets of remnant native forest, including several threatened and endangered species and numerous traditional Hawaiian cultural resources. The goals for the establishment of the KFWA are to:
  - Protect the area's natural and cultural resources.
  - Provide public hunting opportunities to reduce invasive ungulates.
  - Maintain public access to public lands and the coastline.
- Once established, the KFWA may include both public and private lands, with private lands designated as a Game Management Area (GMA) and state-owned lands as a Forest Reserve (following due process as outlined in Hawaii Revised Statutes Chapter 183, Forest Reserves, Water Development, Zoning). DOFAW is proposing compatible uses for the planned Forest Reserve area. These will encompass hunting, management of threatened and endangered species, and the protection of cultural sites and native ecosystems.

**Table 2.** Fee schedule for hunting licenses, wildlife stamps, applications, permits, and tags for special or lottery hunts.

Island	Item	Resident	Non-resident
All islands statewide	Hunting License*	\$10	\$95
	Wildlife Conservation Stamp	\$10	\$10
	Game Bird Stamp	\$10	\$10
	Spring Turkey Tags	\$5	\$20
Kaua'i	Black Tailed Deer Hunts Rifle Tag Application	\$5	\$5
	Rifle Tag	\$10	\$25
	Muzzleloader Permit-Tag	\$5	\$25
	Archery Permit Tag	\$5	\$25
	Feral Goat Hunts Rifle Lottery Tag Applications (Unit B)	\$5	\$10
	Rifle Lottery Tags (Unit B)	\$10	\$25
	Muzzleloader Permit-Tags (Units A & F)	\$5	\$25
	Annual Archery Permit (Units G, F, & K)	\$5	\$25
	Feral Pig Hunts Season Permit	\$5	\$25
	Special Hunts Application	\$5	\$5
	Goat/Deer/Pig Permit (Units E & H)	\$10	\$25
	Goat/Pig Animal Control (Unit G)	\$5	\$25
Lāna'i	Mouflon Sheep Season Lottery Application	\$10	\$10
	Mouflon Sheep Season Tag	\$20	\$125
	Axis Deer Season Lottery Application	\$10	\$10
	Axis Deer Season Tag	\$20	\$125
Hawai'i	Pu'u Wa'awa'a Feral Sheep or Goat Tag	\$10	\$25
	Pu'u Anahulu Feral Sheep or Goat Tag	\$10	\$25

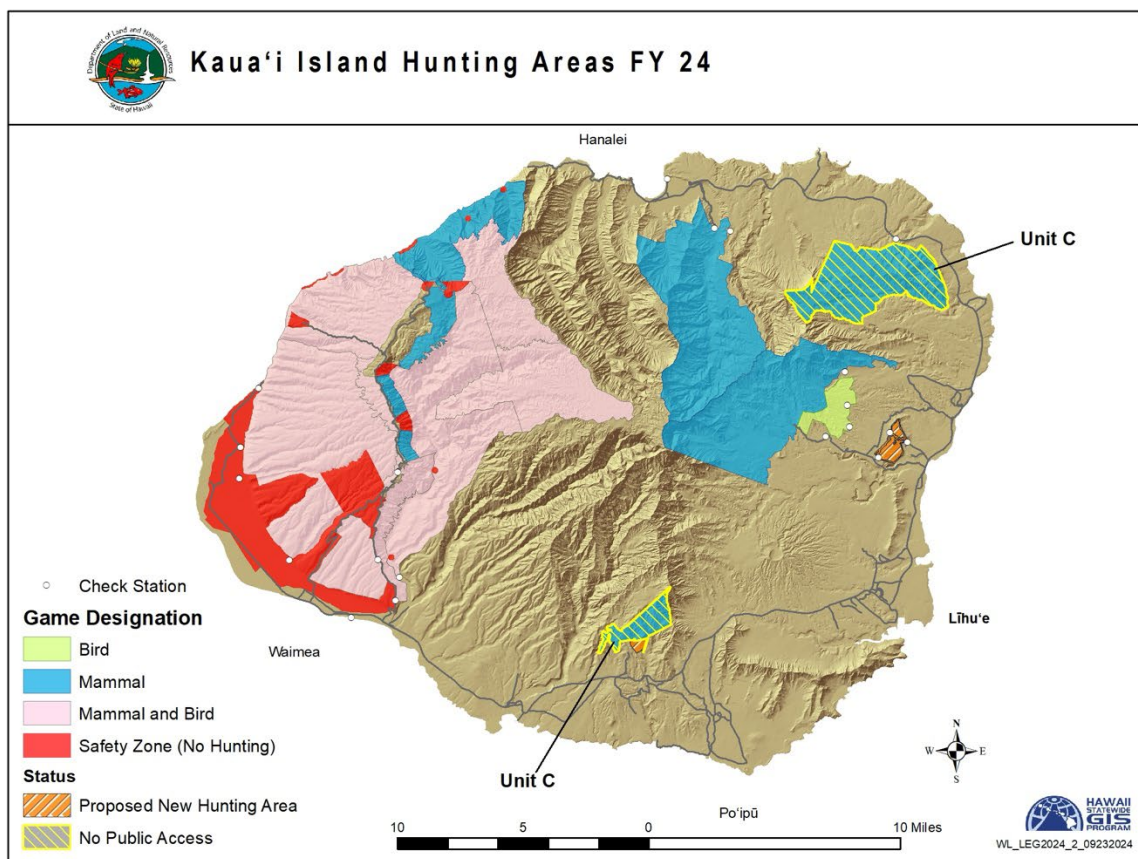
\*Free to all Hawai'i residents 65 years or older and to all persons with Hansen's disease who are residents of Kalaupapa, Moloka'i.



## **ATTACHMENT I: WILDLIFE REVOLVING FUND EXPENDITURE CATEGORIES**

1. Development, improvement, and management of existing and new public hunting and game management facilities, including installing or maintaining hunter access roads, checking stations, fences, gates, stiles, cattle guards, entry, safety, boundary signs and markers, parking lots, sanitary facilities, water tanks, and campsites.
2. Development, improvement, and management of existing and new wildlife sanctuary facilities, including fences, moats, water control structures, pumps, ditches, nesting sites, holding pens, boardwalks, viewing kiosks, watering devices, parking lots, sanitary facilities, and entry and interpretive signs.
3. Wildlife habitat improvements include game bird and mammal watering units, food plots, vegetation clearing and mowing; non-game and endangered species enclosures, exclosures, noxious weed control, mowing, and nest sites; along with wildlife predator control, water quality testing, and rehabilitation.
4. Personnel hires for wildlife management and hunter education include Wildlife Management Assistants, General Laborers (for operating hunter checking stations, managing public hunting areas, controlling pest plants, predator management, habitat development, and posting signs and markers), computer technicians (for public hunting lotteries), and hunter education specialists.
5. Wildlife management equipment including tractors, bulldozers, all-terrain vehicles, collecting arms, radios, outboard motors, small boats, binoculars, trucks, and 4-wheel drive vehicles.
6. Development and management of public shooting ranges in partnership with the Hunter Education Program.
7. Research, surveys, and inventories of game and non-game/endangered species, including rental of helicopters, infrared technology, temporary hires, equipment rental, materials and supplies, and contracts for studies (game birds, forest birds, waterbirds, seabirds, Hawaiian bat, owls, disease, genetics, food habits, ungulates, limiting factors, etc.).
8. Public education on wildlife management, including the development of the "Wilderness Watch" program, providing maps and area informational leaflets, and interpretive facilities at game management areas and wildlife sanctuaries, as well as offering technical assistance to the public on wildlife management.
9. Rental of land for public hunting and wildlife management.
10. Law enforcement.

**Exhibit 1.**





Kekaha GMA Range mowing.

Maintained (250) acres of viable game bird habitat/traversable hunting grounds with Kubota tractors and various mower attachments.



Game bird rearing Kauai



## Exhibit 2.

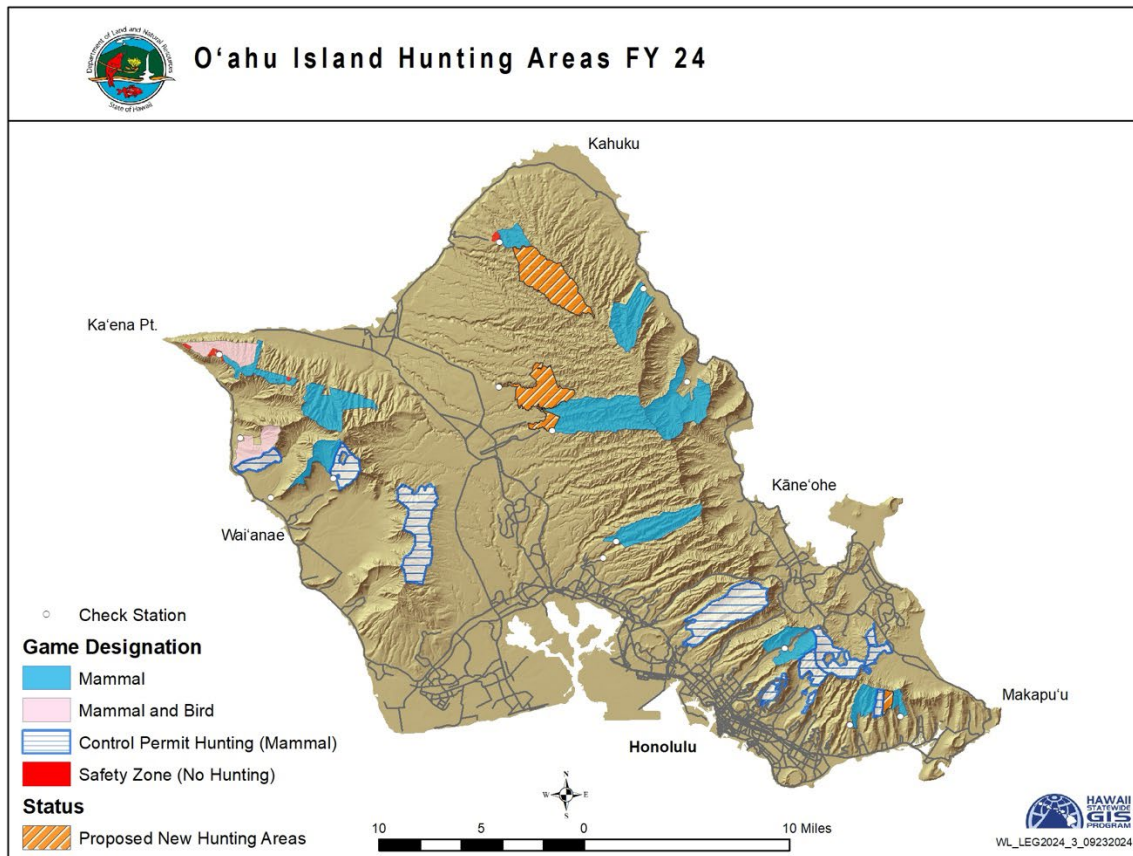


Photo 1 & 2





Photo 3 & 4



Photo 5 & 6



Photo 7 & 8

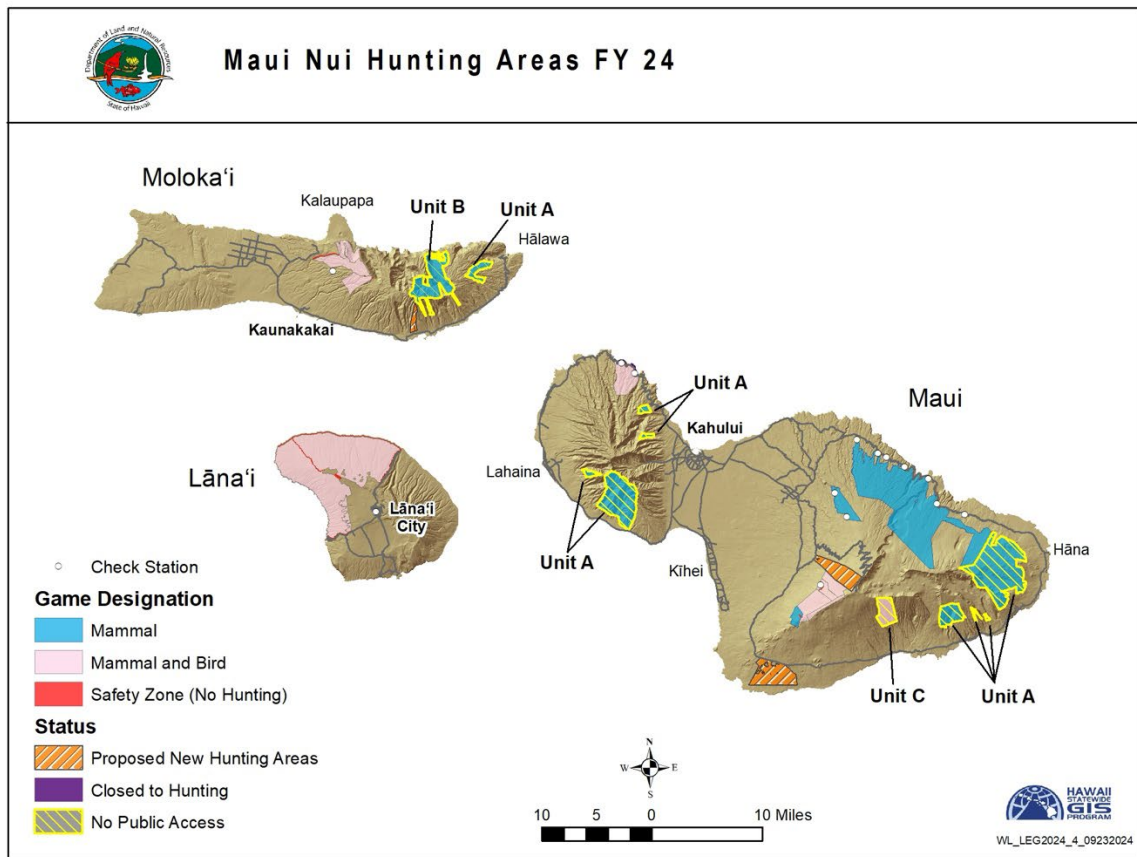


Photo 9

Photo Descriptions

1. Transport boxes for game bird release project.
2. DOFAW Wildlife staff with Kubota tractor used to mow management areas for hunting.
3. Volunteer bird hunters help with building a fly pen for Waipahu High School
4. Kawainui Baseyard fly pens damaged by wind/rain storm.
5. Public bird hunter with their bird dog, Miso.
6. Successful harvest of a wild upland bird, Erckel's Francolin
7. DOFAW staff helping with capturing penned birds for release into the hunting area.
8. DOFAW staff with families assisting with the release of game birds.
9. Wild pigs are a common target species for our wildlife control permit programs, especially in wildlife/urban interface areas.

### Exhibit 3





**Exhibit 4.**

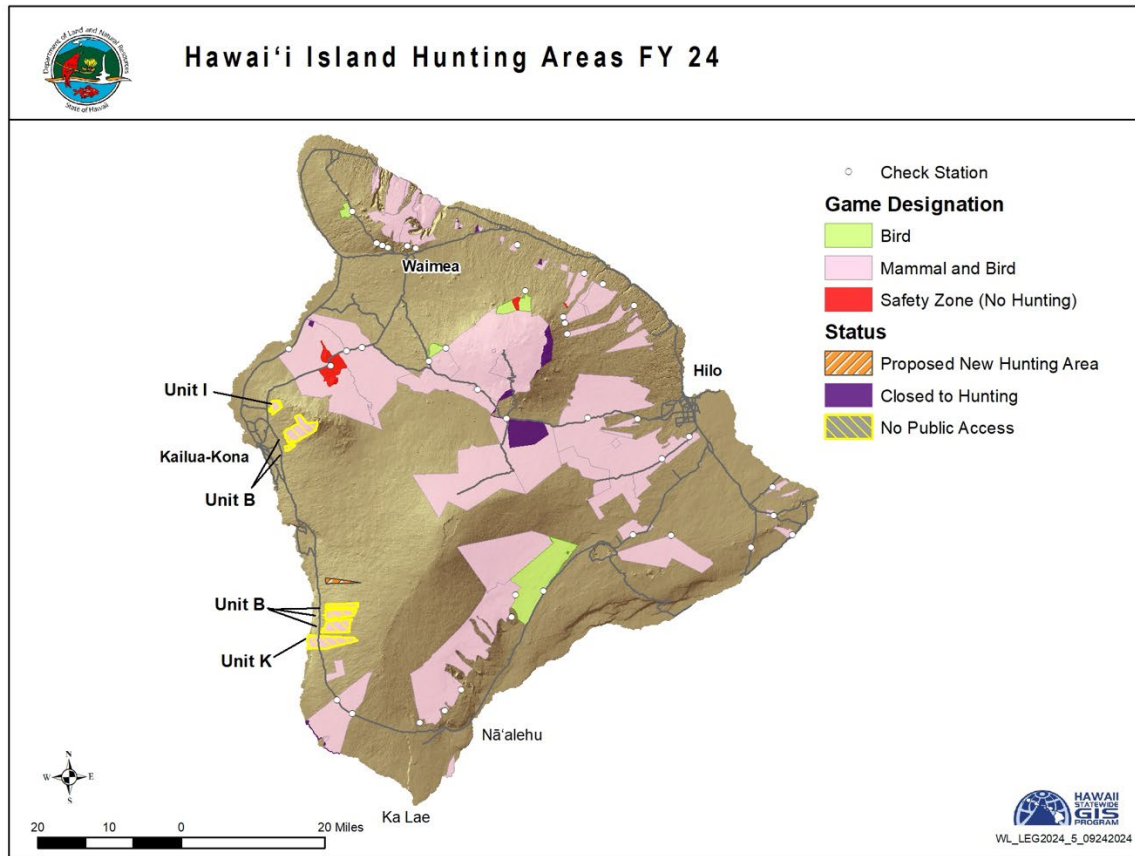


Photo 1. New field work shirts that promote the Hawaii Island Game Bird Rearing Project



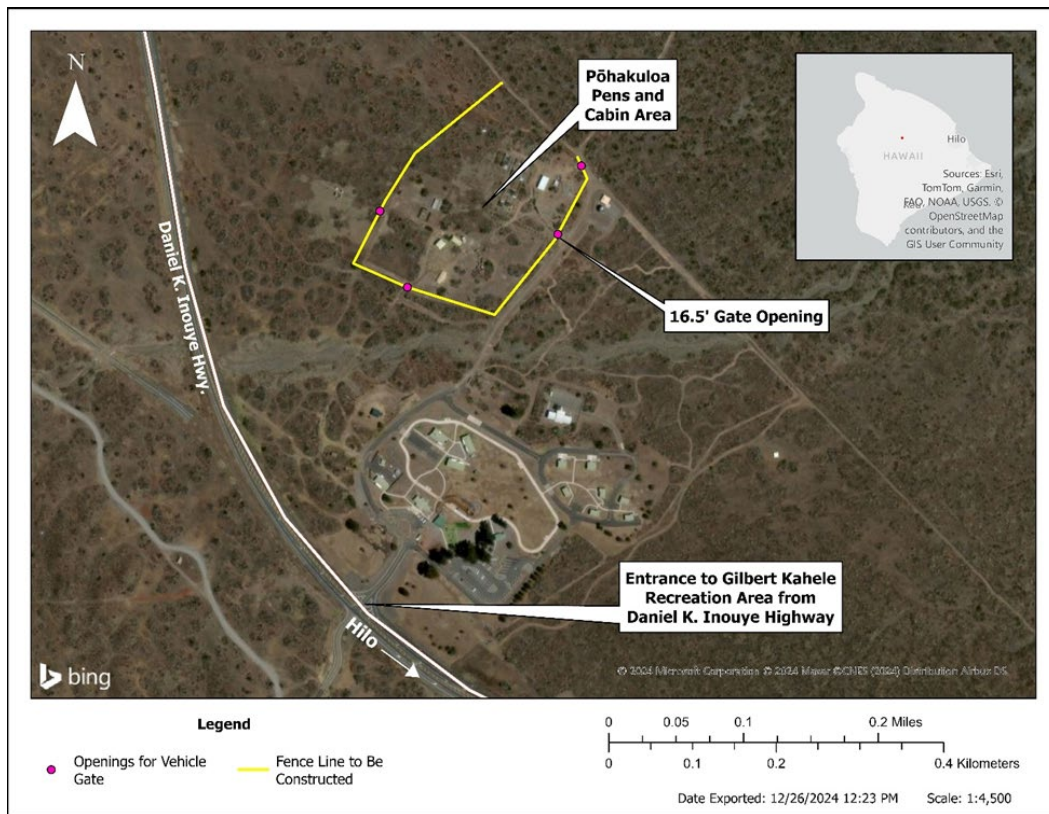


Photo 1: Map used in the solicitation for the fence replacement at the Pōhakuloa Pens and Cabin Area on Hawaii Island.




Photos 3 & 4: Newly constructed fence around the Pōhakuloa Pens and Cabin Area on Hawaii Island



**Exhibit 5.****Go Hunt Hawai'i Newsletter (Jan. 2022 / Feb. 2022)**

**JANUARY 2022**



**GO HUNT Hawai'i**  
CONNECTING HUNTERS & RESOURCE MANAGERS

This is the twelfth edition of *Go Hunt Hawai'i*, a quarterly newsletter to connect hunters and the Department of Land and Natural Resources (DLNR), Division of Forestry and Wildlife (DOFAW). Sign up to stay up to date on announcements, changes to hunting areas, research on animal populations and more.

**SIGN ME UP**

**THANK YOU VOLUNTEERS!**

**Game Bird Survey on Kakaia GMA**  
We conducted a volunteer game bird survey on October 27, 2021 in the Kakaia GMA. We wanted to thank the volunteers who took the time out of their busy schedules to assist with the survey.


**2021 Pheasant Release Project on Kaua'i**  
Kaua'i DOFAW would like to recognize and thank the volunteers who helped with this year's pheasant release project. DOFAW brought in 600 Ring-necked and 150 Melanistic (Blue) day old pheasant chicks on June 19 and with the help of volunteers reared them for 6 weeks. After the 6 weeks the chicks were then brought up to the fly-pen and were cared for and released into the hunting area. Without the help of volunteers this project could not take place.

**Game Bird Propagation Project on O'ahu**  
On O'ahu, a total of 100 Ring-necked Pheasants, 100 Melanistic (Blue) Mutant Pheasants, and 100 Chukar Partridges were released at the Kuakula GMA. DOFAW would like to thank the volunteers who helped with this year's game bird project.

**Volunteers:** Kevin Vidinha, Nick Croft, Jesse Abrached, Jeff Emoko, Wesley Musumura, Elaine Musumura, Tyris Musumura, Mei Matsumoto, Derek Kapoza, Morgan Moses Lopez, Cory Carwin, Kaweli Harris, James Marques, Teddy Ferreira, Les Bara, Corey Lum Won, Amy Lauren Lum Won, Joel Andres, Joe Moranz.

**Volunteers:** Chris Coscarella, Chloe Coscarella, Sean Igne, Corey Lum Won, Amy Lauren Lum Won, Mark Sugawara, Wayne Sugawara, Leslie Sugawara, Jeff Emoko, Hope Newton, Adam

**Game bird release process:**



**Aerial view of Kakaia GMA.**

**NEW UPDATED GO HUNT PORTAL:  
APPLY FOR HUNTS & PURCHASE TAGS ONLINE**

Hunters can now purchase tags, permits, and apply for hunts online through a new service provided by Hawai'i DLNR. The service can be accessed from the Hunt section of the Division of Forestry & Wildlife website, where users can click "Purchase Tags & Permits" and/or "Apply for Hunts".

After payment, users can simply download their purchased tags, permits, or applications. Should the user misplace their downloaded copy, she or he can find the tag or permit at anytime from the portal's My Tags & Permits page.

Users can log in and select the tags or permits they want to purchase, and submit applications for hunting. Required information can be entered into the online form, and payment can be made through the website.

**ANNOUNCEMENTS**

**HUNTING STAMP CONTEST**  
**DOFAW SEEKING ART ENTRIES**  
The 2022-2023 Hunting Stamp contest is still open! The subjects for this year are the Chukar Partridge (Shikara's chukar) and the Wild (indigenous) species. Artists interested in entering the contest must submit their paintings by February 15, 2022. The winner will be notified on March 2022, with a maximum prize of \$1,000. For more information, click [HERE](#).

DOFAW would like to thank all wildlife artists who submitted art entries for the 2022-2023 Hawai'i Hunting Stamp Contest. A committee reviewed all submissions in the subject categories: Ring-necked Pheasant (Pheasant), Chukar Partridge (Chukar), and Mouflon Sheep (Ovis montanus). Two winners were chosen, shown here:

**LĀNA'I**  
**AXIS DEER & MOULFON SHEEP SEASON**  
Applications for a combination 2022 Lāna'i Axis Deer and Mouflon Sheep hunting season will be available to the public online beginning Monday, January 10, 2022. For more information click [HERE](#).

For season length, bag limits, and other information for all hunts, please see Title 13, Chapter 123, "Rules Regulating Game Mammal Hunting".

**HAWAII**  
Timothy Turner


**HAWAII**  
Michael Bailey

**HAWAII ISLAND**  
**SPRING TURKEY SEASON**  
The 2022 Spring Bearded Turkey Hunting Season opened on January 1, 2022 and will run until April 15, 2022. You can now purchase your Tags online through the new [GO HUNT PORTAL](#).

**GMAC**  
**COMMISSION UPDATES**  
The Maui and West Hawai'i Commission seats are still vacant! The State Game Management Advisory Commission (GMAC) is seeking applicants. If you are interested in serving on the GMAC, please fill out the online application [HERE](#).

Department of Land and Natural Resources,  
Division of Forestry and Wildlife  
[www.dlnr.hawaii.gov/recreation/hunting](http://www.dlnr.hawaii.gov/recreation/hunting)

**FEBRUARY 2022**



**GO HUNT Hawai'i**  
CONNECTING HUNTERS & RESOURCE MANAGERS

This is the thirteenth edition of *Go Hunt Hawai'i*, a quarterly newsletter to connect hunters and the Department of Land and Natural Resources (DLNR), Division of Forestry and Wildlife (DOFAW). Sign up to stay up to date on announcements, changes to hunting areas, research on animal populations and more.

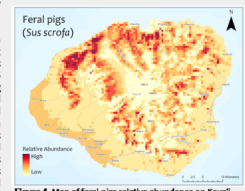
**SIGN ME UP**

**PRELIMINARY RESULTS OF UNGULATE DISTRIBUTION RESEARCH ON KAUAI ISLAND**

In the first quarter of 2017, DOFAW released a study conducted by the University of Hawai'i Department of Natural Resources and Environmental Management research team to determine the distribution of ungulates on O'ahu and Maui with the purpose to assess the effectiveness of exclusion and direct take methods, the key strategies that are currently used to manage ungulates across the State.

Recently, the study expanded that research to the island of Kaua'i to inform game management and conservation decision making for feral pigs (*Sus scrofa*), feral goats (*Capra hircus*), and black-tailed deer (*Odocoileus hemionus*). In addressing these issues, the study identified seasonal patterns in ungulate distribution and potential species interactions between the three-ungulate species. Data was collected over two seasons from July 15th to December 11th, 2020 (fall) and March 15th to July 12th, 2021 (spring). Feral pigs were the most frequently detected species having been observed at 53 locations followed by black-tailed deer at 30 locations and feral goats were only observed at 9 locations. Preliminary model results indicate that two environmental variables were most important in predicting each species distribution.

**Feral pigs (*Sus scrofa*)**



**Figure 1. Map of feral pigs relative abundance on Kaua'i.**

**Credit:** Jason Omick, DLNR-DOFAW, Derek Risch and Melissa Price, Ph.D., University of Hawai'i.

**NEW ONLINE HUNTER CHECK STATION**

There is a new way to check-in and check-out of State hunting units with a harvest reporting feature available in *Go Hunt!*

**CHECK-IN STEPS**

1. Download the *Go Hunt!* App.
2. Navigate to the Hawaii community and go to "Challenges" or click on the red plus button on the page and then click "Hunting Check-in".
3. Create an account, if you have not already.
4. Click on Check-in.
5. Select where you will be hunting.
6. Enter your name and the names of everyone in your party.
7. Enter your Hunting License # and Vehicle License #.
8. Select the game you intend to hunt.

**CHECK-OUT STEPS**

1. Enter the day when you completed your hunt.
2. Select the "Check-out" icon and then the game species you harvested (if any).
3. If your harvest contained a band or tag of any type, please enter the number or color.
4. Add the amount of your harvest.

**ANNOUNCEMENTS**

**HUNTING ETIQUETTE 101**  
**RESPECT THE LAW**  
State hunting regulations are designed to protect the resource, access and the hunter. In the State of Hawai'i, hunting is regulated by the Hawai'i Administrative Rules Title 13, Chapter 122 & 123, Rules Regulating Game Mammal and Game Bird Hunting. It is the hunters responsibility to also have:

- A valid Hawai'i hunting license on their person to hunt or to have a tagged game animal in their possession.
- A current year, \$10.00 Hawai'i Wildlife Conservation Stamp is also required to hunt game mammals and an additional game bird stamp for game bird hunting.

**HAWAII ISLAND**  
**SPRING TURKEY SEASON**  
The 2022 Spring Bearded Turkey Hunting Season opened on January 1, 2022 and will run until April 15, 2022. You can now purchase your Tags online through the new *GO HUNT!* PORTAL. For more information click [HERE](#).

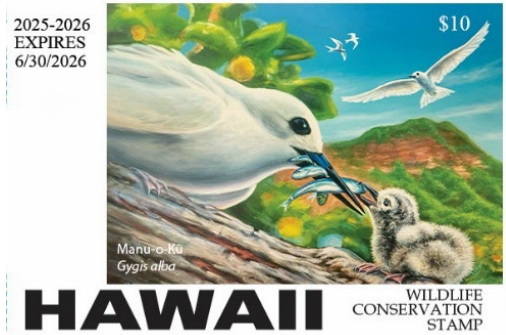
**LĀNA'I**  
**MOULFON SHEEP CONTROL HUNT**  
A special 2022 Mouflon Sheep Control Hunt will be held during the month of April during the weekends. For more information click [HERE](#).

**GMAC**  
**COMMISSION UPDATES**  
The Maui and West Hawai'i Commission seats are still vacant! The State Game Management Advisory Commission (GMAC) is seeking applicants. If you are interested in serving on the GMAC, please fill out the online application [HERE](#).

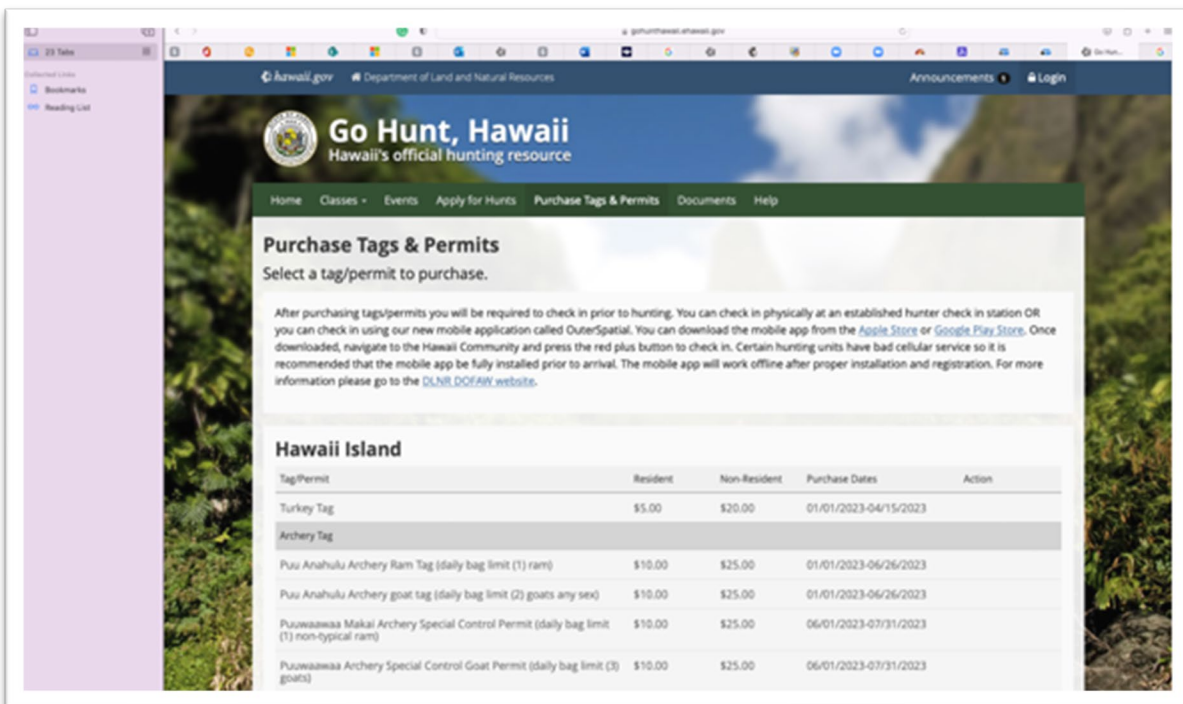
Department of Land and Natural Resources,  
Division of Forestry and Wildlife  
[www.dlnr.hawaii.gov/recreation/hunting](http://www.dlnr.hawaii.gov/recreation/hunting)

**Wildlife Conservation and game bird stamp awards 2025-2026.** Each artist is awarded up to \$1000.00.

Artist: Patrick Ching



Artist: David K. Hayes



Online hunting Tag and Permit Portal developed by Tyler Technologies