



DEPARTMENT OF LAND & NATURAL RESOURCES Report to the Governor 1987-89 VOLUME I



JOHN WAIHEE  
GOVERNOR OF HAWAII



STATE OF HAWAII  
DEPARTMENT OF LAND AND NATURAL RESOURCES

P.O. BOX 621  
HONOLULU, HAWAII 96809

June 15, 1990

WILLIAM W. PATY, CHAIRPERSON  
BOARD OF LAND AND NATURAL RESOURCES

DEPUTIES

KEITH W. AHUE  
MANABU TAGOMORI  
RUSSELL N. FUKUMOTO

AQUACULTURE DEVELOPMENT  
PROGRAM  
AQUATIC RESOURCES  
CONSERVATION AND  
ENVIRONMENTAL AFFAIRS  
CONSERVATION AND  
RESOURCES ENFORCEMENT  
CONVEYANCES  
FORESTRY AND WILDLIFE  
HISTORIC PRESERVATION  
PROGRAM  
LAND MANAGEMENT  
STATE PARKS  
WATER AND LAND DEVELOPMENT

Honorable John Waihee  
Governor of Hawaii  
State Capitol  
Honolulu, Hawaii

Dear Governor Waihee:

As we move out of the decade of the 80's, the increasing demands on our natural resources have focused our attention not only on the public's current needs and priorities, but on long-range programs and activities that will have an impact on our children and their children's children for years to come.

Based on the State's growing residential and transitory populations, and the increasing competition between commercial, recreational and environmental concerns, it is imperative that we establish and maintain long-term approaches to balance these public interests through effective management and control of our natural resources.

Under your direction, and with the support of the Legislature and the Board of Land and Natural Resources, my staff and I are very proud of our accomplishments. But more importantly, we look forward to exciting and innovative opportunities to provide our community with increased access to Hawaii's natural resources, and to strengthen our role in protecting and preserving our environment. At the same time, we must recognize and regulate suitable and appropriate recreational and commercial activities on our lands and waterways.

Obviously, this will not be an easy task. But with your continued support and direction, we are prepared to meet the challenge. Our report for 1987-89 reflects our past achievements and our vision for the future.

Respectfully,

WILLIAM W. PATY



STATE OF HAWAII  
DEPARTMENT OF LAND  
& NATURAL RESOURCES

Report to the Governor  
1987-1989

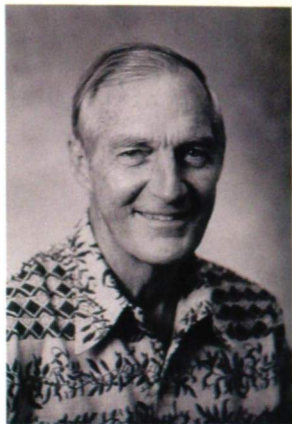
VOLUME I

Board of Land & Natural Resources	6
Departmental Organization Chart	7
Division of Aquatic Resources	10
Division of Conservation & Resources Enforcement	14
Bureau of Conveyances	16
Division of Forestry & Wildlife	18
Division of State Parks, Outdoor Recreation & Historic Sites	24
Division of Water & Land Development	28
Land Management Division	32
Aquaculture Development Program	36
Office of Conservation & Environmental Affairs	38
Administrative Services Office	40
Personnel Office	42





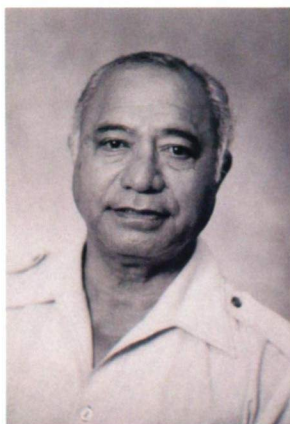
# BOARD OF LAND & NATURAL RESOURCES



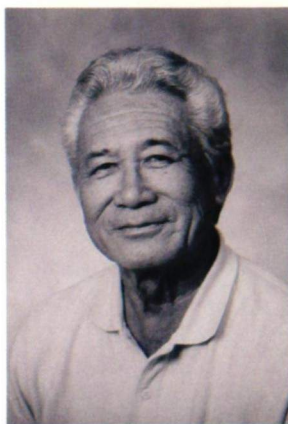
*William W. Paty*  
Chairperson  
(1/2/87 - 12/31/90)



*J. Douglas Ing*  
Oahu Member  
(6/10/81 - 6/30/89)



*Moses W. Kealoha*  
Member at Large  
(1/2/82 - 6/30/90)



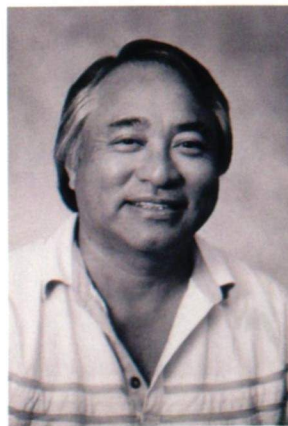
*Herbert K. Apaka Jr.*  
Kauai Member  
(7/1/88 - 6/30/92)



*Leonard Zalopany*  
Kauai Member  
(7/1/84 - 6/30/88)



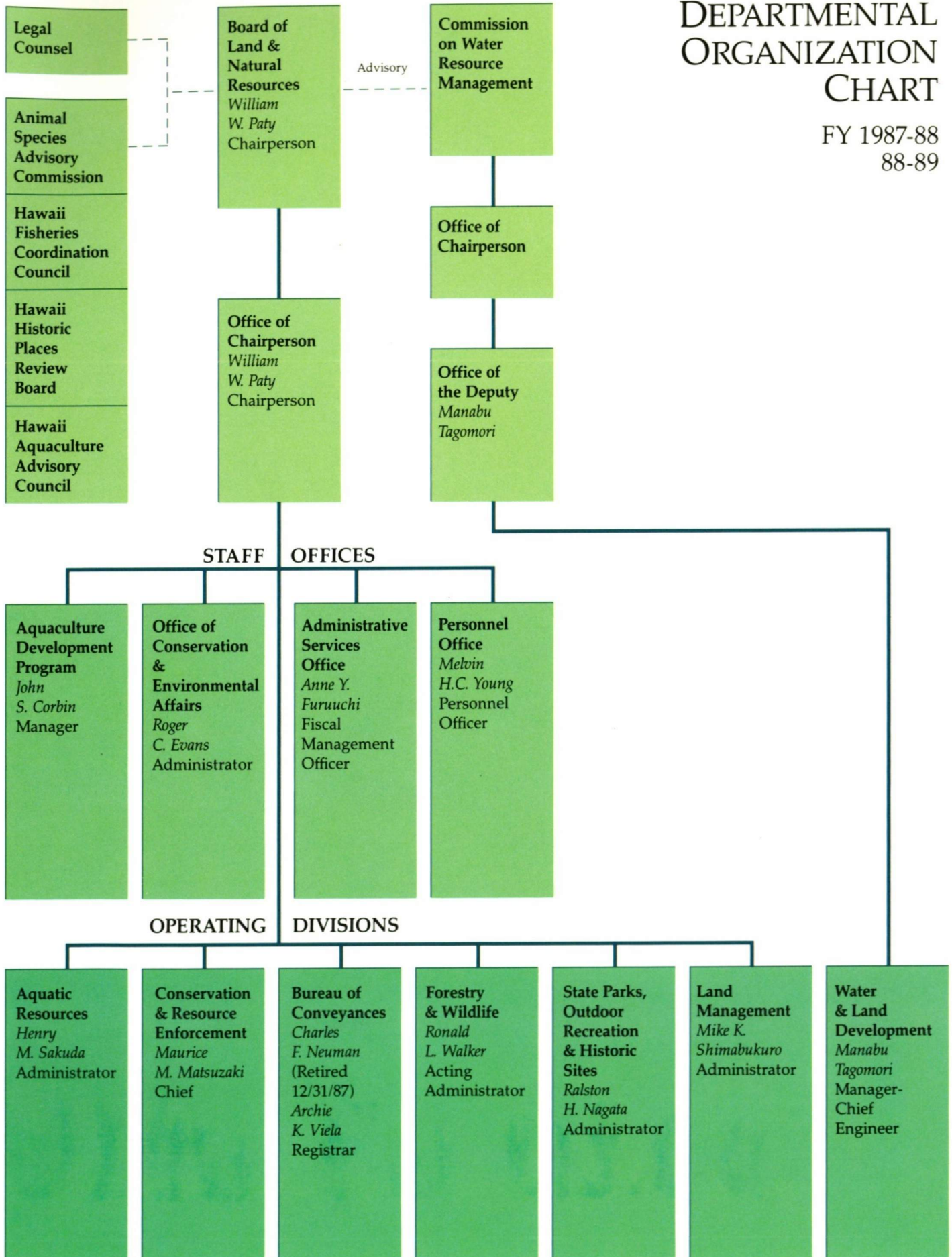
*John Y. Arisumi*  
Maui Member  
(6/30/86 - 6/30/89)



*Herbert Y. Arata*  
Hawaii Member  
(6/30/86 - 6/30/90)

# DEPARTMENTAL ORGANIZATION CHART

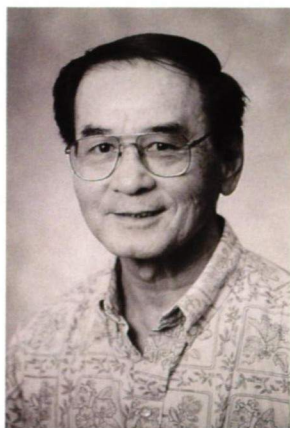
FY 1987-88  
88-89



*Yellowfin goatfish (weke) proliferate at artificial reef in Maunalua Bay, Oahu, which provides shelter and breeding grounds for reef fishes. Using tire-and-concrete modules and other materials such as sunken barges, the Division of Aquatic Resources constructed and maintains five artificial reefs in Hawaii.*

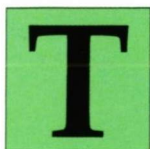






## DIVISION OF AQUATIC RESOURCES

**Henry M. Sakuda**  
*Administrator*



he Division administers the State's programs in commercial fisheries and aquaculture, aquatic resources preservation and enhancement, and aquatic recreation. Major activities include providing opportunities and facilities for recreational fishing, protecting native and other resident aquatic species and their habitat, providing hatchery stock and technical assistance toward aquaculture development and conducting fishery development projects consistent with the interests of the State.

### *Commercial Fishery and Aquaculture Program*

This program's function is to assist commercial fishery enterprises by increasing productivity through improvements in production methods, product processing, equipment usage and management methods, and developing new and improved aquaculture products by providing technical assistance and demonstration projects so as to enhance the quality and diversification of Hawaii's commercial fishery and aquaculture production.

#### *Fish Aggregating Devices (FADs)*

##### ACCOMPLISHED 1987-88

- ▶ Monitored 50 approved FAD sites; replaced 17 FADs; maintained 25 FADs
- ▶ Conducted 9,961 fishing trips to FADs; recorded 1,566,877 pounds of fishes caught

##### PLAN TO ACCOMPLISH 1988-89

- ▶ Increase FAD sites
- ▶ Monitor fishing trips to and landings at FADs

##### ACCOMPLISHED 1988-89

- ▶ Established 13 new FAD sites and monitored 63 approved FAD sites; deployed 9 new FADs; replaced 29 FADs; maintained 20 FADs
- ▶ Conducted 8,135 fishing trips to FADs; recorded 904,667 pounds of fishes caught

##### PLAN TO ACCOMPLISH 1989-90

- ▶ Assess and relocate FAD sites to more productive areas; deploy fish aggregating area off West Molokai
- ▶ Monitor fishing trips to and landings at FADs

### *Tuna Product Development*

##### ACCOMPLISHED 1987-88

- ▶ Implemented project (contract UH, Food Science Dept.)

##### PLAN TO ACCOMPLISH 1988-89

- ▶ Develop product for institutional use from surplus aku

##### ACCOMPLISHED 1988-89

- ▶ Developed aku pattie product that met requirements of Dept. of Education school lunch program; completed taste evaluation with students and participants at informational sessions

##### PLAN TO ACCOMPLISH 1989-90

- ▶ Investigate frozen storage characteristics of aku pattie product

### *Commercial Fishing*

##### ACCOMPLISHED 1987-88

- ▶ Issued 2,627 Commercial Marine Licenses
- ▶ Recorded 11,068,246 pounds of fish landed and 10,599,714 pounds sold, valued at \$20,597,610

##### PLAN TO ACCOMPLISH 1988-89

- ▶ Issue 2,700 Commercial Marine Licenses
- ▶ Monitor catches and value

##### ACCOMPLISHED 1988-89

- ▶ Issued 2,728 Commercial Marine Licenses issued
- ▶ Recorded 12,583,487 pounds of fish landed and 12,117,821 pounds of fish sold, valued at \$25,881,653

##### PLAN TO ACCOMPLISH 1989-90

- ▶ Issue 2,800 Commercial Marine Licenses
- ▶ Monitor catches and value

### *Prawn Aquaculture*

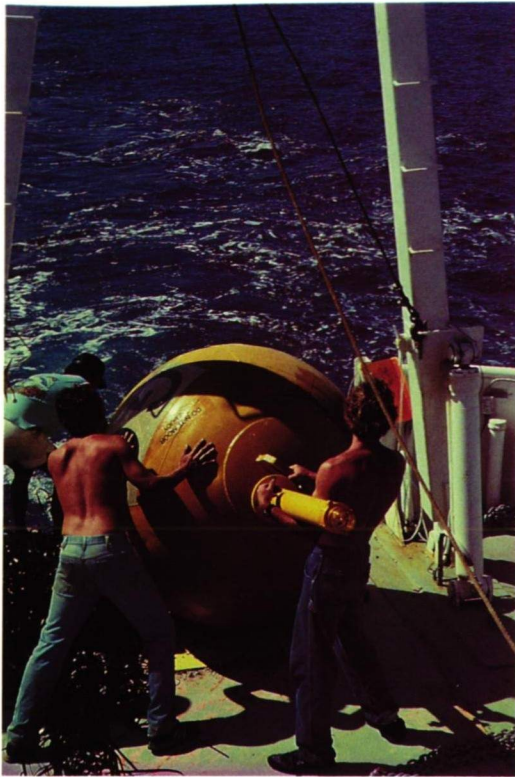
##### ACCOMPLISHED 1987-88

- ▶ Distributed approximately 5.5 million post-larvae to 19 local growers, estimated value nearly \$80,000
- ▶ Provided technical farm and hatchery assistance to 25 prawn growers
- ▶ Conducted prawn industry post-larvae survey

##### PLAN TO ACCOMPLISH 1988-89

- ▶ Meet the seed stock needs of local prawn growers
- ▶ Provide technical farm and hatchery assistance to prawn growers
- ▶ Construct aquatic animal isolation facility for disease studies
- ▶ Modify recirculating prawn hatchery system bio-filter design
- ▶ Finalize industry post-larvae survey report





#### ACCOMPLISHED 1988-89

- ▶ Distributed approximately 3.7 million post-larval prawns to 22 local growers, estimated value nearly \$70,000
- ▶ Provided technical assistance to 28 prawn growers, assisted with development and operation of two recirculating larval rearing systems
- ▶ Completed construction of an aquatic animal isolation facility
- ▶ Redesigned and constructed bio-filter for the recirculating larval rearing system
- ▶ Completed prawn industry post-larvae survey report

#### PLAN TO ACCOMPLISH 1989-90

- ▶ Meet the seed stock needs of local prawn growers
- ▶ Provide technical farm and hatchery assistance to prawn growers
- ▶ Test recirculating larval rearing system using redesigned bio-filter

### DPIRM Projects

#### ACCOMPLISHED 1987-88

- ▶ Completed and received approval for Project Valuation Assessments for: 1) Fisheries Information System of Hawaii, Phase 2, and 2) Commercial Fisheries Licensing System

#### PLAN TO ACCOMPLISH 1988-89

- ▶ Obtain approval of funds to implement DPIRM projects

#### ACCOMPLISHED 1988-89

- ▶ Funding approved by 1989 Legislature

#### PLAN TO ACCOMPLISH 1989-90

- ▶ Begin implementation of (1) Fisheries Information System of Hawaii, Phase 2, and (2) Commercial Fisheries Licensing System

### Aquatic Resources Program

The function of this program is to preserve and enhance native and other resident fish and aquatic species and their habitats through active protection and other management measures.

### Marine Life Conservation Districts (MLCD)

#### ACCOMPLISHED 1987-88

- ▶ Monitored 7 MLCDs, established Waikiki MLCD, and surveyed potential sites at Poipu, Salt Pond, and Kipu Kai, Kauai
- ▶ Obtained permits for experimental mooring system in Molokini Shoal MLCD; deployed 14 sets of concrete anchors; installed 22 stern and 3 single point bow anchor pins

#### PLAN TO ACCOMPLISH 1988-89

- ▶ Monitor established MLCDs and continue surveys of potential sites
- ▶ Complete installation of experimental mooring system in the Molokini Shoal MLCD

#### ACCOMPLISHED 1988-89

- ▶ Monitored 8 MLCDs; resurveyed Poipu Beach and Salt Pond, Kauai
- ▶ Installed mooring tackle for bow and stern anchors at the Molokini Shoal MLCD

#### PLAN TO ACCOMPLISH 1989-90

- ▶ Monitor established MLCDs and continue surveys of potential sites
- ▶ Evaluate effectiveness of experimental mooring system; prepare environmental assessment for and establish permanent system

### Main Hawaiian Islands Marine Resources Investigation (MHI/MRI)

#### ACCOMPLISHED 1987-88

- ▶ Conducted survey of 1,400 individuals and received 850 responses for opinions on critical problem areas in coastal areas; proposed framework of plan to investigate reasons for problems

#### PLAN TO ACCOMPLISH 1988-89

- ▶ Obtain legislative support and funding for study

#### ACCOMPLISHED 1988-89

- ▶ Received \$396,716 in State general funds for FY 1988-89 and \$389,721 for FY 1989-90 from the 1989 Legislature to implement the MHI/MRI study

#### PLAN TO ACCOMPLISH 1989-90

- ▶ Implement MHI/MRI study; evaluate results; propose management strategies as appropriate

*Left, Besides freshwater prawn aquaculture programs, Aquatic Resources distributes disease-free post-larvae of marine shrimp to aquaculture farmers for use as brood stock. Above, Crew of University of Hawaii research vessel Kila deploy a Fish Aggregating Device (FAD) to increase recreational and commercial fishing opportunities.*



## Education Program

---

### ACCOMPLISHED 1987-88

- ▶ Initiated long-range plan for Federal Aid approval

### PLAN TO ACCOMPLISH 1988-89

- ▶ Complete planning process and obtain Federal Aid approval; hire Aquatic Resource Information Specialists; begin implementation of program

### ACCOMPLISHED 1988-89

- ▶ Received Federal approval of program; hired temporary Information Specialists for Kauai, Oahu, Maui, and Hawaii; initiated pilot fishing education project emphasizing conservation ethics

### PLAN TO ACCOMPLISH 1989-90

- ▶ Expand Fishing Education Project statewide; promote aquatic conservation through schools and media; establish permanent Information Specialists positions

## Endangered Species Program

---

### ACCOMPLISHED 1987-88

- ▶ "Headstarted" five female seal pups in beach pen on Kure Atoll; tagged sea turtle off Molokai to obtain information on growth and migration patterns; responded to reports of turtle and sea mammal strandings

### PLAN TO ACCOMPLISH 1988-89

- ▶ Assist federal programs on Hawaiian Monk Seal, green sea turtles, and cetaceans with State permit requirements; implement recovery plans for threatened and endangered species

### ACCOMPLISHED 1988-89

- ▶ Placed four female seal pups into Project Headstart beachpen and released them; tagged sea turtles off Molokai for data collecting purposes; responded to reports of turtle and sea mammal strandings

### PLAN TO ACCOMPLISH 1989-90

- ▶ Assist federal programs on Hawaiian Monk Seal, green sea turtles, and cetaceans with State permit requirements; implement recovery plans for threatened and endangered species

## Aquatic Recreation Program

---

This program's function is to enrich the leisure time of people of all ages by providing opportunities and facilities for developing skills and participating in non-organized outdoor aquatic recreation activities such as saltwater and freshwater fishing, underwater photography, snorkeling and nature studies of aquatic organisms and their habitats.

## Public Fishing Areas (PFA)

---

### ACCOMPLISHED 1987-88

- ▶ Cage-cultured and released 6,325 near-adult channel catfish in Nuuanu PFA; stocked 85,100 fingerling trout in Kokee PFA; improved the aeration system in Wahiawa PFA; evaluated problems with fish kills and accidental introductions

### PLAN TO ACCOMPLISH 1988-89

- ▶ Maintain and improve PFA stocking programs; test cage-culture of trout; identify management problems and implement corrective measures

### ACCOMPLISHED 1988-89

- ▶ Cage-cultured and released 3,650 near-adult channel catfish in Nuuanu PFA; succeeded in cage-culture of 4,500 rainbow trout in Nuuanu PFA; stocked 88,700 fingerling rainbow trout in Kokee PFA; operated Wahiawa aeration system to prevent a fish kill during a draw-down; found a serious impact from the accidental introduction of a freshwater needlefish

### PLAN TO ACCOMPLISH 1989-90

- ▶ Maintain and improve PFA stocking programs; evaluate the potential for a trout fishery in the Nuuanu PFA; identify management problems and implement corrective measures

## Artificial Reefs

---

### ACCOMPLISHED 1987-88

- ▶ Added 1,000 tons of material and 3 barges to the Ewa artificial reef and 500 concrete-tire fish habitats to the Maunalua Bay artificial reef; monitored fish populations

### PLAN TO ACCOMPLISH 1988-89

- ▶ Improve Ewa, Keawakapu, and Waianae artificial reefs

### ACCOMPLISHED 1988-89

- ▶ Added 1,000 tons of material and a 174-ft. surplus barge to the Ewa, 1,000 concrete-tire habitats to the Keawakapu, and 750 concrete-tire habitats to the Waianae artificial reefs; monitored fish populations

### PLAN TO ACCOMPLISH 1989-90

- ▶ Continue build-up of Ewa, Keawakapu, and Waianae artificial reefs

## Waikiki-Diamond Head Fisheries Management Area (FMA)

---

### ACCOMPLISHED 1987-88

- ▶ Opened area to fishing under special conditions; monitored public use and fish population trends

### PLAN TO ACCOMPLISH 1988-89

- ▶ Close Waikiki-Diamond Head FMA to enhance fish population growth

### ACCOMPLISHED 1988-89

- ▶ Closed Waikiki-Diamond Head FMA to fishing and monitored fish population trends

### PLAN TO ACCOMPLISH 1989-90

- ▶ Reopen Waikiki-Diamond FMA to fishing under special conditions

## Native Fisheries

---

### ACCOMPLISHED 1987-88

- ▶ Surveyed the range of a major *Lentipes* population in the Waikolu Stream, where periodic dewatering will occur

### PLAN TO ACCOMPLISH 1988-89

- ▶ Devise a method for reducing the impact of dewatering on the *Lentipes* population in Waikolu Stream

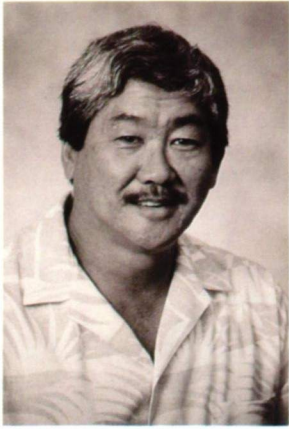
### ACCOMPLISHED 1988-89

- ▶ Developed plans for a *Lentipes* fish ladder to allow passage of the native goby past the dewatered section in Waikolu Stream

### PLAN TO ACCOMPLISH 1989-90

- ▶ Install the Waikolu fish ladder and monitor its use by *Lentipes*

*A young student in the fishing education pilot program catches a needlefish (aha). The program teaches fishing skills and conservation ethics, promoting wise use of nearshore and freshwater fisheries resources.*



## DIVISION OF CONSERVATION & RESOURCES ENFORCEMENT

**Maurice M. Matsuzaki**  
Chief



he Division of Conservation and Resources Enforcement's main role is to provide a desirable physical environment for the people of Hawaii by enforcement of laws, rules and regulations and through public information and education. These efforts enhance the preservation and conservation of Hawaii's land and natural resources.

Eradication of marijuana cultivated on state lands is a high priority function of the division. The illegal marijuana cultivation adversely affects the health, safety and welfare of residents and tourists who use our forest areas for hiking, hunting and other recreational activities.

Another major function of the division is the administration of the Hunter Education Program to educate Hawaii's residents in outdoor safety and resource conservation. This program is funded by the Pittman-Robertson Federal Aid in Wildlife Restoration Tax Act monies generated from the sales of firearms and archery equipment.

### ACCOMPLISHED 1987-88

- ▶ Finalized division plan to give direction to the State's Conservation and Resources Enforcement Program as it moves into the 1990's, giving detailed operational procedures for daily administrative and law enforcement activities
- ▶ Received funding from the legislature to add 6 dogs to the canine program
- ▶ Destroyed 958,561 marijuana plants with street value of \$958,561,000 in three operations on the Big Island
- ▶ Finalized 5-year plan for Hunter Education Program and submitted it to U. S. Department of Interior, Fish and Wildlife Service



*The Hunter Education Program teaches hunter ethics, safe firearms handling, bow-hunting safety, game laws, outdoor First Aid and survival, and wildlife management principles.*

### PLAN TO ACCOMPLISH 1988-89

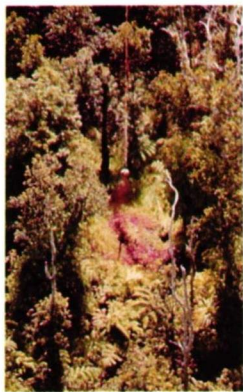
- ▶ Review organizational structure of the division to determine its effectiveness in meeting our needs
- ▶ Develop operational plans and manual for the marine patrol
- ▶ Implement central radio dispatching for 24-hour law enforcement service statewide
- ▶ Review existing policies, procedures and training relating to canine corps and implement revisions as required
- ▶ Strengthen the investigative services unit to sustain a full-time marijuana eradication program
- ▶ Overhaul the Hunter Education Program, refining it to meet the special hunting needs of Hawaii

### ACCOMPLISHED 1988-89

- ▶ Developed a reorganization plan for the Division of Conservation and Resources Enforcement and submitted it to the Department of Budget and Finance and the Governor for approval
- ▶ Received approval for requested changes in program structure and performance measures for DOCARE, in order to examine the program's progress in key activity areas
- ▶ Completed large-scale testing of glyphosate to determine its effectiveness in destroying marijuana after Standard Oil Company requested the suspension of weed oil on marijuana
- ▶ Destroyed 583,018 marijuana plants with street value of \$583,018,000 in five operations on three islands
- ▶ Received legislative appropriation of \$964,479 for the marijuana eradication program for FY 1990
- ▶ Increased the number and locations of Hunter Education Program classes and certified 800 students, a three-fold increase over previous years
- ▶ Gained passage of Act 96 which mandates certification for specific classes of hunting license applicants, effective July 1, 1990
- ▶ Gained legislative approval of \$900,000 to develop and construct a state public shooting range on Oahu

### PLAN TO ACCOMPLISH 1989-90

- ▶ Add supervisory positions on Maui and Kauai with emphasis on program support services
- ▶ Add a new Hunter Education Program office in response to legislation
- ▶ Establish an in-depth data collection system in order to have accurate information available on patrol activities, with information stored in computer files for quick retrieval and interpretation
- ▶ Evaluate test results and continue to research other chemicals and substances which could be used effectively in the eradication of marijuana
- ▶ Develop an eradication program plan for FY 1989-90, using a systematic approach based on geographic priority areas
- ▶ Develop a marketing strategy for Hunter Education Program
- ▶ Develop a schedule of classes to accommodate all applicants for the Hunter Education Program
- ▶ Certify over 1,600 students
- ▶ Investigate potential sites for an Oahu outdoor recreational facility capable of supporting the many different styles of firearm and archery target shooting



Above, Marijuana eradication operations in state-owned forest reserves and conservation lands keep these areas safe for public enjoyment and protect native plants and wildlife habitats. An enforcement officer hefts dozens of plants to a disposal site. In aerial eradication, a spraying cable is suspended from a helicopter onto a marijuana patch. Glyphosate, a biodegradable herbicide (dyed red as a warning), is spot-sprayed on the weed patch. The herbicide is carried in a drum attached under the chopper. Left, Conservation enforcement officers, in cooperation with other public safety agencies, keep curious onlookers away from Kilauea's molten lava steaming into the sea at Kalapana.



## BUREAU OF CONVEYANCES

**Archie K. Viela**  
*Registrar*



In Hawaii, documents showing ownership, encumbrances and liens are recorded in the Bureau of Conveyances. This process establishes a "chain" of title showing successive ownership, beginning with the original source, and proceeding to and including the present owner.

The recording program is mandated and guided by specific statutes to protect the rights of individuals and organizations in land ownership. Comprehensive records of documents affecting land titles, including deeds, mortgages, maps and land court documents, are maintained. The Bureau of Conveyances also registers documents under the provisions of the Uniform Commercial Code a means of perfecting security interests in personal property.

The Bureau of Conveyances is the sole agency of the State of Hawaii authorized to carry out this function; therefore, it is the only office that can provide information concerning recordation methods and procedures.

As a service to the Department of Taxation and the public, the Bureau of Conveyances also collects conveyance taxes due on transfer of real property ownership.

### ACCOMPLISHED 1987-88

- ▶ Recorded 193,748 documents, an increase of 24% over estimated workload, in Regular System
- ▶ Increased from 7 months to 12 months document processing backlog due to increase in estimated workload and inability to fill vacancies caused by retirements and transfers
- ▶ Recorded 85,568 documents, 24% over projected workload, and issued 16,481, new Certificates of Titles, 22% over projected workload, in Land Court System
- ▶ Drafted and reviewed rules of the Land Court and submitted them to Supreme Court staff attorney for review and promulgation
- ▶ Collected \$4,208,466 Conveyance Taxes, \$1,255,243 Regular System fees and \$1,308,086 Land Court fees

### PLAN TO ACCOMPLISH 1988-89

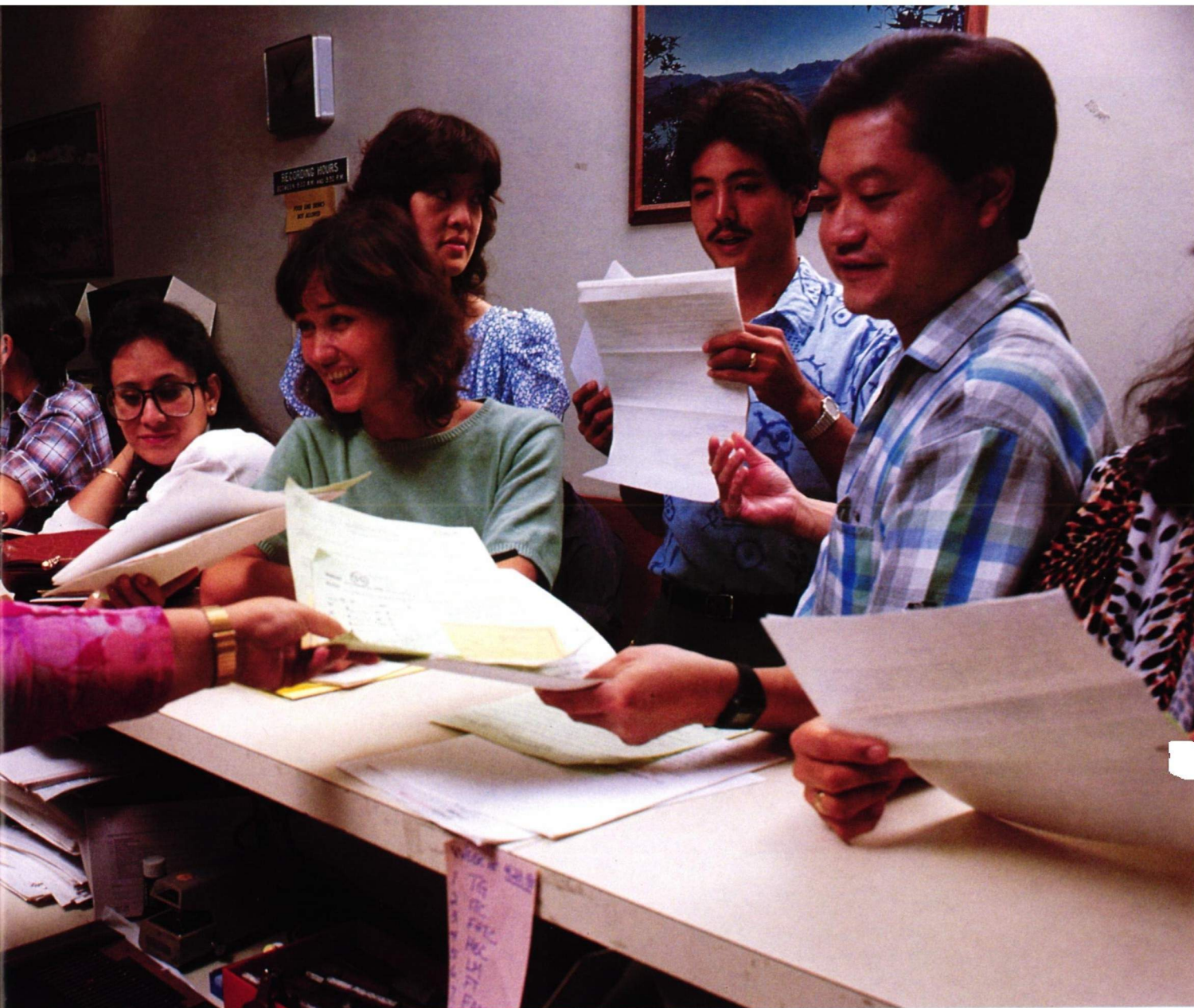
- ▶ Examine, record and process 157,000 documents presented for recordation in Regular System
- ▶ Reduce the Regular System document processing backlog from 7 months to 10 days
- ▶ Examine, record and process 69,000 documents presented for recordation in the Land Court System and issue 14,000 new Certificates of Titles

- ▶ Reduce the 2-½ year document processing backlog in the Land Court System by hiring additional employees to fill newly authorized positions and investigate the feasibility of contracting for computer data input services
- ▶ Amend contract specifications in order to attract computer firms from within or without the State
- ▶ Draft and submit proposed Administrative Rules relating to recordation of Regular System documents
- ▶ Collect an estimated \$3,610,000 Conveyance Taxes, \$1,204,000 Regular System fees and \$1,344,000 Land Court fees

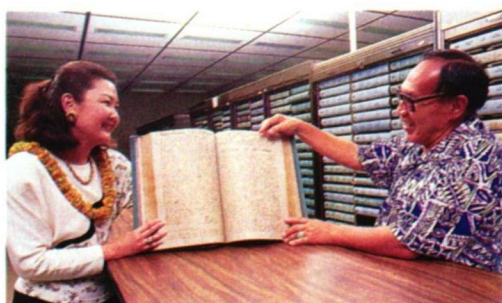
### ACCOMPLISHED 1988-89

- ▶ Recorded 191,071 documents, an increase of 22% over estimated workload, in Regular System
- ▶ Reduced Regular System document processing backlog from 7 months to 2 months
- ▶ Recorded 89,461 documents, 30% over projected workload, and issued 16,299 new Certificates of Titles, 16% over projected workload, in Land Court System





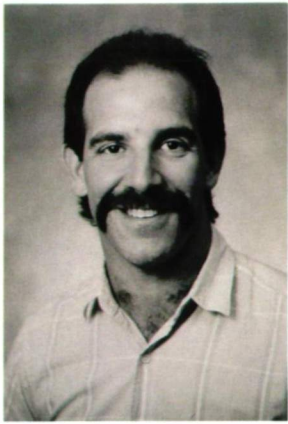
- ▶ Interviewed other computer firms within and without the State able to provide necessary services to reduce backlog
- ▶ Submitted Administrative Rules relating to recordation of Regular System documents to Ad Hoc Committee for review prior to submission for approval by Legislative Reference Bureau and Attorney General
- ▶ Collected \$5,182,629 Conveyance Taxes, \$1,277,034 Regular System fees and \$1,291,847 Land Court fees



#### PLAN TO ACCOMPLISH 1989-90

- ▶ Examine, record and process 205,000 documents presented for recordation in Regular System
- ▶ Reduce the Regular System document processing backlog from 3 months to 10 days
- ▶ Examine, record and process 100,000 documents presented for recordation in the Land Court System and issue 21,000 new Certificates of Title
- ▶ Reduce the 3 year backlog to 1 to 1-½ years in the Land Court System
- ▶ Draft and submit revisions to the Hawaii Revised Statutes, Administrative Rules relating to recordation of Regular System documents and/or Rules of the Land Court

*Above, At the receiving counter, property owners and buyers present documents such as deeds and mortgages to record their real estate transactions. Left, The public reference room contains land documents recorded since 1845, some written in Hawaiian. These records are useful for title searches and in determining liens and judgments on properties.*



## DIVISION OF FORESTRY & WILDLIFE

**Michael G. Buck**  
*Administrator*



he Division of Forestry and Wildlife is responsible for the management of State-owned forests, natural areas, public hunting areas, and plant and wildlife sanctuaries. Program areas cover commercial forestry, outdoor

recreation, and environmental protection including unique ecosystems and endangered species of plants and wildlife.

### *Forest Products Development*

The goals of this program are to grow high quality forest products in order to meet local and export demand, create job opportunities in rural areas and broaden Hawaii's economic base.

#### **ACCOMPLISHED 1987-88**

- ▶ Produced and distributed 452,963 tree seedlings
- ▶ Prepared 142 acres for tree planting
- ▶ Planted 710 acres of trees
- ▶ Fertilized 675 acres of trees
- ▶ Maintained 25 acres of seed orchards
- ▶ Provided forestry assistance to over 400 landowners
- ▶ Sold over \$175,000 of forest product

#### **PLAN TO ACCOMPLISH 1988-89**

- ▶ Continue to produce and distribute high quality seedlings for tree planting activities
- ▶ Replant all forest plantations harvested for biomass energy and abandoned sugar cane lands turned over to the Division
- ▶ Maintain the health of existing forest plantations through silvicultural treatments
- ▶ Increase Service forestry responsiveness by assisting more private landowners

#### **ACCOMPLISHED 1988-89**

- ▶ Produced and distributed 437,000 tree seedlings
- ▶ Prepared 144 acres for tree planting
- ▶ Planted 138 acres of trees
- ▶ Fertilized 155 acres of trees
- ▶ Maintained 27 acres of seed orchards
- ▶ Provided forestry assistance to over 161 private landowners and 33 citizen organizations
- ▶ Established a nursery on Molokai for tree planting activities
- ▶ Drafted a Tree Farm Bill which was passed by Legislature

#### **PLAN TO ACCOMPLISH 1989-90**

- ▶ Continue to produce and distribute high quality seedlings for tree planting activities
- ▶ Plant 100 new acres of forest plantations
- ▶ Maintain the health of existing forest plantations through silvicultural treatments
- ▶ Participate in legislative action concerning land owner tax reform and incentives to encourage tree planting
- ▶ Write draft management plan for implementation of Tree Farm Bill
- ▶ Conduct inventory of selected high-quality hardwood plantations for future harvest

### *Forest and Wildlife Resources Protection and Natural Physical Environment*

These programs have several common goals: to conserve and enhance open spaces, forests, wildlife, natural and wilderness areas; to protect forest watersheds, aesthetic beauty, wildlife habitat, samples of undisturbed ecosystems, rare native plants and animals; and to control and suppress fires, erosion, noxious plant species, and other damaging threats.

### *Native Ecosystems*

#### **ACCOMPLISHED 1987-1988**

- ▶ Completed a Biological Overview of the Natural Area Reserves System (NARS)
- ▶ Conducted management field inventories in 6 Reserves
- ▶ Completed three Reserve management plans
- ▶ Constructed two strategic fences to protect pristine Eke Crater from feral pigs
- ▶ Built a 1-mile boardwalk in the bog in the Mt. Kaala Reserve

#### **PLAN TO ACCOMPLISH 1988-89**

- ▶ Encourage concerned volunteer groups to participate in management activities for the NARS
- ▶ Maintain the undisturbed condition of priority natural area reserves

#### **ACCOMPLISHED 1988-89**

- ▶ Completed management field inventories for 15 Reserves
- ▶ Finalized management plans for 6 Reserves; wrote draft plans for four additional Reserves
- ▶ Coordinated over 800 volunteers who contributed over 3,900 hours of labor building boardwalks and pig control fences, clearing trails, and removing noxious weeds
- ▶ Constructed three more strategic fences to protect Eke Crater from feral pigs
- ▶ Blocked off access into the Kaena Point NAR by off-road vehicles
- ▶ Developed cooperative agreement with the Nature Conservancy to prevent feral ungulates from entering the Puu Alii NAR

#### **PLAN TO ACCOMPLISH 1989-90**

- ▶ Encourage concerned volunteer groups to participate in management activities for the NARS
- ▶ Maintain the undisturbed condition of priority natural area reserves

*Waterfalls grace the cliffs of Mount Wai'ale'ale, Kauai, wettest spot in the world. Watershed management is the top priority of the Division of Forestry and Wildlife (DOFAW).*



*Hawaii's state bird, the Nene, has been saved from extinction through a captive propagation and habitat improvement program of DOFAW and its cooperators.*



### *Threatened and Endangered Species*

#### ACCOMPLISHED 1987-1988

- ▶ Moved 9 'Alala into the new Olinda Endangered Species Facility
- ▶ Assisted in birth of Ho'oku, the first baby crow born at Olinda Endangered Species Facility
- ▶ Conducted intensive forest bird surveys on Maui and Molokai
- ▶ Conducted two state-wide waterbird surveys
- ▶ Removed over 1,000 sheep from palila habitat on Mauna Kea
- ▶ Improved habitat and released Nene in Keahou and Kahuku sanctuaries on Hawaii
- ▶ Recovered and successfully released 2,095 Newell's Shearwater on Kauai
- ▶ Successfully grafted the critically endangered Cooke's koki'o (*Kokia cookii*), doubling the number of known existing plants

#### PLAN TO ACCOMPLISH 1988-89

- ▶ Increase the number and acreage of plant sanctuaries
- ▶ Complete renovation of Olinda Endangered Species Facility
- ▶ Publish Endangered Species Plan
- ▶ Set up Shearwater Recovery Program on Oahu

#### ACCOMPLISHED 1988-89

- ▶ Completed forest bird survey in the Alakai Swamp on Kauai
- ▶ Monitored successful nesting of Nene in the wild on Kauai
- ▶ Recovered and released 1,580 Newell's Shearwaters on Kauai and 150 Wedge-tailed Shearwaters on Oahu
- ▶ Assisted in birth of "Hoike", a second baby crow at Olinda Endangered Species Facility
- ▶ Completed new pens for endangered waterfowl and renovated support facilities for all species at Olinda
- ▶ Continued bi-annual waterbird counts: 10 year average indicates 146 koloa, 133 gallinule, 1,674 coot, 1,204 stilt
- ▶ Established the following plant sanctuaries: *Sesbania tomentosa* (West Maui), *Pritchardia munroi* (Molokai), *Isodendroin hosakae* and *Lipochaeta venosa* (Hawaii)
- ▶ Completed and published *Threatened and Endangered Species Plan for Wildlife, Plants, and Invertebrates*, including priorities and workload analysis

#### PLAN TO ACCOMPLISH 1989-90

- ▶ Transfer Nene and Koloa Ducks from Pohakuloa to Olinda



- ▶ Begin interagency discussions for new species captive propagation
- ▶ Finish Hawaiian endangered bird video
- ▶ Develop new Kawaiiele Waterbird Sanctuary on Kauai
- ▶ Bring new 'alala into Olinda to augment current captive flock
- ▶ Develop Puuwaawaa Wildlife Sanctuary
- ▶ Print botanical guide for Pihea Trail on Kauai
- ▶ Conduct public hearings for plant sanctuary rules
- ▶ Establish plant sanctuaries in Koaie Canyon on Kauai and for *Mezonueron kawaiense* on Hawaii



*Groundbreaking for Olinda Endangered Species Facility: Chairperson William Paty, Governor John Waihee, head aviculturist Dr. Fern Duvall, and DOFAW chief Michael G. Buck.*



*Two Alala chicks were successfully raised at Olinda Endangered Species Facility on Maui, giving new hope to save this endangered species of Hawaiian crow.*

### **Watershed Protection**

#### **ACCOMPLISHED 1987-1988**

- ▶ Controlled noxious plants on 173 acres
- ▶ controlled erosion on 6 acres
- ▶ Planted 2,500 tamarisk trees on Kahoolawe
- ▶ Eradicated 133 wild cattle in Forest Reserves on Maui
- ▶ Conducted fire training class for employees from DOFAW and other State agencies
- ▶ Fought 13 fires encompassing 34,000 acres

#### **PLAN TO ACCOMPLISH 1988-89**

- ▶ Reduce number of wildfire acres burned

#### **ACCOMPLISHED 1988-89**

- ▶ Conducted a Smokey Bear environmental poster contest for public and private schools
- ▶ Conducted Basic Firefighter class attended by 121 people
- ▶ Fought 9 fires encompassing 1,155 acres
- ▶ Controlled 53 acres of noxious plants
- ▶ Controlled 28 acres of erosion
- ▶ Removed 213 wild cattle from Forest Reserves on Maui and Hawaii
- ▶ Planted 7,400 trees on Kahoolawe
- ▶ Continued efforts to suppress marijuana cultivation in State Forest Reserve Lands

#### **PLAN TO ACCOMPLISH 1989-90**

- ▶ Fight fires aggressively and safely in wildland fire protection areas and render assistance to cooperators as needed and dictated by mutual aid pacts

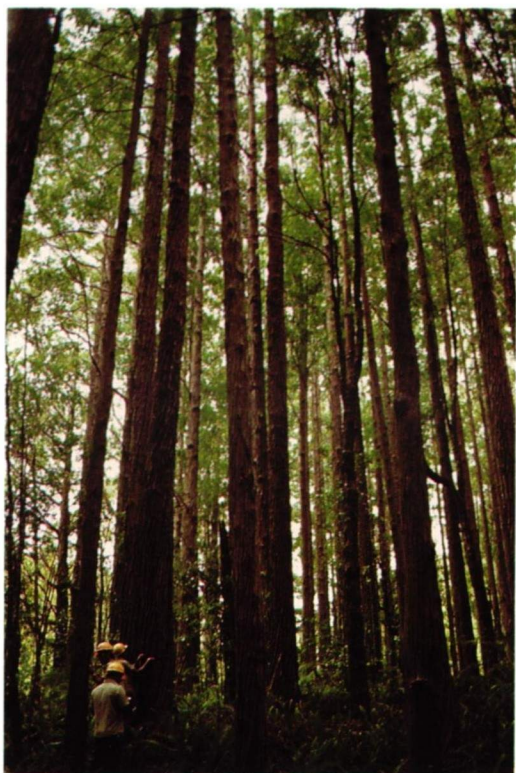
### **Environmental Education**

#### **ACCOMPLISHED 1988-1989**

- ▶ Wrote and published Kaena Point NAR brochure
- ▶ Completed botanical guide to Awaaapuhi Trail in Na Pali Kona Forest Reserve
- ▶ Distributed 5,237 ornamental and 777 native plants during Arbor Day
- ▶ Posted educational signs in the Keanae Arboretum on Maui
- ▶ Built 16 parking stalls in Kanaha Wildlife Sanctuary and built access for handicapped persons
- ▶ Entered in a cooperative agreement with Hawaii Public TV's archive program, resulting in documentary video footage on four reserves

#### **PLAN TO ACCOMPLISH 1989-90**

- ▶ Increase environmental education efforts through brochures, videos, and nature trails
- ▶ Establish cooperative management agreements with appropriate agencies



### ***Forest and Wildlife Recreation Program***

This program's goals are to enrich the leisure time of people of all ages by providing opportunities and facilities for developing outdoor skills and by allowing the public's participation in forest recreation such as camping, hunting, photography, and nature walks.

#### **ACCOMPLISHED 1987-88**

- ▶ Constructed 8 miles of roads, 4.3 miles of trails, 3 trail shelters, and 0.7 miles of fences
- ▶ Maintained 400 miles of roads, 182 miles of trails, and 30.2 miles of fences
- ▶ Maintained 678 acres of arboreta
- ▶ Maintained 32 trail shelters, 34 picnic campsites, 7 hunter checking stations, 96 wildlife watering units, and 47 view points
- ▶ Managed over one million acres of public hunting lands
- ▶ Provided opportunities for over 20,200 game mammal hunter trips
- ▶ Provided opportunities for over 9,080 game bird hunter trips
- ▶ Sold over \$96,000 in hunting license
- ▶ Improved over 215 acres of game bird habitat
- ▶ Opened an additional 1200 acres of public hunting area for game birds on the island of Hawaii
- ▶ Conducted game bird habitat improvement studies on Oahu and Kauai

#### **PLAN TO ACCOMPLISH 1988-89**

- ▶ Continue to provide a outdoor recreational infrastructure of roads, trails, and shelters
- ▶ Increase public access opportunities for hiking and hunting by establishing a state-wide trails and access system
- ▶ Increase outdoor educational opportunities by expanding nature trail system and providing educational materials
- ▶ Continue to provide a quality hunting experience for Hawaii residents by improving game habitat and management techniques, streamlining the licensing system, and opening new hunting areas

#### **ACCOMPLISHED 1988-89**

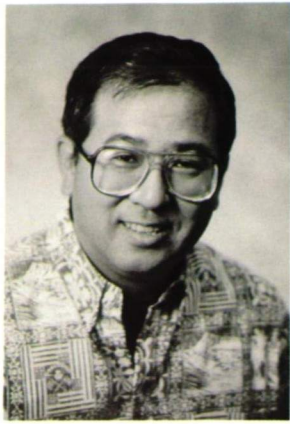
- ▶ Constructed 5 miles of roads, 17.4 miles of trails, 3 trail shelters, 6.0 miles of fences, and 4 wildlife watering units
- ▶ Maintained 544 miles of roads, 202 miles of trails, and 48.4 miles of fences
- ▶ Maintained 633 acres of arboreta
- ▶ Maintained 39 trail shelters, 34 picnic campsites, 7 hunter checking stations, 96 wildlife watering units, and 47 view points
- ▶ Managed over one million acres of public hunting lands
- ▶ Provided opportunities for over 20,000 game mammal hunter trips
- ▶ Provided opportunities for over 10,055 game bird hunter trips
- ▶ Improved over 50 acres of game bird habitat
- ▶ Reconstructed 2.1 miles of the popular Polipoli Recreation Access Road
- ▶ Conducted experiments with infrared scanners to improve wildlife count techniques
- ▶ Sold over \$90,000 in hunting licenses
- ▶ Opened 1880 acres of archery game mammal hunting on Oahu
- ▶ Completed Nounou Mountain Trail Bridge on Kauai
- ▶ Initiated the Na Ala Hele Trail and Access System Program by establishing island advisory groups and prioritizing demonstration trails

#### **PLAN TO ACCOMPLISH 1989-90**

- ▶ Continue to provide a outdoor recreational infrastructure of roads, trails, and shelters
- ▶ Increase public access opportunities for hiking and hunting by establishing a access through state-owned lands on Maui and Hawaii
- ▶ Establish Na Ala Hele demonstration trails on all major islands
- ▶ Establish permanent positions for an operational Na Ala Hele program within the Division
- ▶ Increase outdoor educational opportunities by expanding nature trail system and providing educational materials
- ▶ Continue to provide a quality hunting experience for Hawaii residents by improving game habitat and opening new hunting areas on private lands with new legislative monies
- ▶ Conduct research study on Black Francolin on Molokai

*Above, DOFAW's forest replanting activities help counter global warming and create opportunities for a small forest products industry. Right, Molokai's Puu Alii Natural Area Reserve is kept pristine by new fence construction to protect the area from damage by feral animals.*





## DIVISION OF STATE PARKS, OUTDOOR RECREATION & HISTORIC SITES

**Ralston H. Nagata**  
*Administrator*



he Division of State Parks, Outdoor Recreation and Historic Sites administers the state park system, the historic preservation program and the state recreation planning program. Basic activities relating to these func-

tions are divided among two programs of the State's budgeting system: Heritage and Recreation Parks and General Administration for Culture and Recreation.

### *Heritage and Recreation Parks*

The objective of this program is to enrich the leisure time of people of all ages, by preserving and making available for appreciation and study places of historical, archaeological, and natural significance. This program also provides opportunities and facilities for nonorganized outdoor park recreation activities and for appreciation of unique natural features. Activities in this program include the planning, construction and management of all existing parks with natural and cultural features.

#### ACCOMPLISHED 1987-88

- ▶ Completed plan for shore protection at Sand Island State Recreation Area, Oahu
- ▶ Installed new interpretive wayside exhibit at Kalalau Trailhead, Na Pali Coast State Park, Kauai
- ▶ Established curator programs at Ulupo Heiau State Monument, Oahu and two historic sites at Wailua River State Park, Kauai
- ▶ Established policies at Kahana Valley State Park, Oahu to implement "living park" concept for 31 valley families; established State financed low interest home mortgage fund
- ▶ Developed new picnic area at Old Kona Airport State Recreation Area, Hawaii, and installed security barrier with gate
- ▶ Constructed new comfort station with flush toilets to replace old pit toilet facility at Lava Tree State Monument, Hawaii
- ▶ Reconstructed park maintenance shed at Aina Moana State Recreation Area, Oahu to double floor space for storage of additional equipment and supplies
- ▶ Paved lower section of summit trail at Diamond Head State Monument, Oahu with concrete for erosion control and dust abatement
- ▶ Completed design jobs for improvements to 24 state parks



#### PLAN TO ACCOMPLISH 1988-89

- ▶ Initiate land appraisals of Kukaniloko Birthstones and Laie Point on Oahu to establish new state parks, and at Wailea Beach area for expansion of Hapuna Beach State Recreation Area, Hawaii
- ▶ Continue development of curator program by conducting workshops and on-site programs
- ▶ Improve grounds at State Capitol and at Russian Fort Elizabeth State Historical Park, Kauai, and install new interpretive wayside exhibit at Russian Fort Elizabeth
- ▶ Expand picnic area at Waimanalo Bay State Recreation Area, Oahu
- ▶ Improve tour bus parking lot at Nuuanu Pali State Wayside, Oahu
- ▶ Continue incremental retrofitting of existing facilities for handicapped access
- ▶ Renovate facilities at Mauna Kea State Park, Hawaii and Waianapanapa State Park, Maui
- ▶ Improve sewage systems at Puu Ualakaa State Wayside, Oahu; Wailua River State Park, Kauai; Wahiawa Freshwater State Recreation Area, Oahu; Makena State Park, Maui, and Na Pali Coast State Park, Kauai
- ▶ Improve water systems at Kaena Point State Park, Oahu; Iao Valley State Monument, Maui; Malaekahana State Recreation Area, Oahu; Waahila Ridge State Recreation Area, Oahu and Keaiwa Heiau State Recreation Area, Oahu



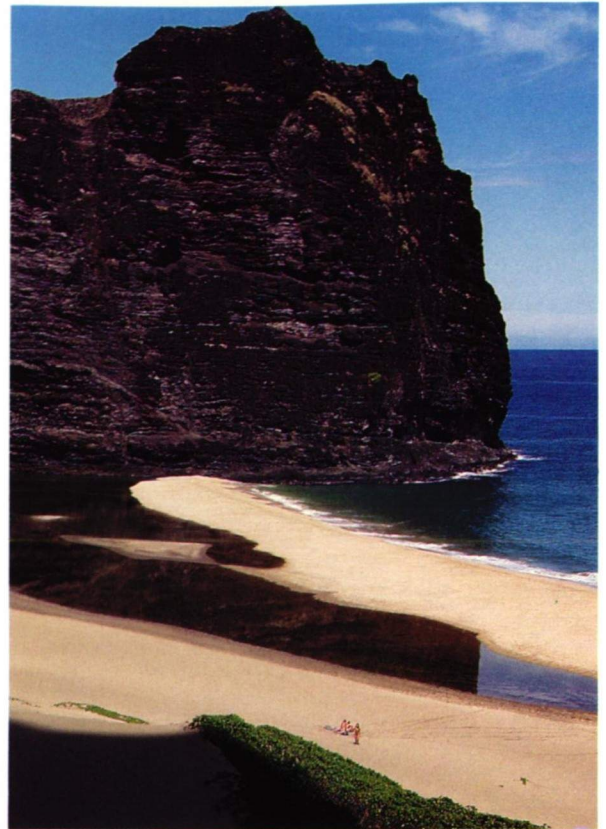
*The river estuary in Kahana Valley State Park is a popular area for artists and for children learning about estuary ecology.*

- ▶ Construct maintenance facilities at Washington Place and at Kaiaka State Recreation Area on Oahu, and at Old Kona Airport State Recreation Area, Hawaii
- ACCOMPLISHED 1988-89**
- ▶ Designated as a state park 3.1-acre parcel containing Kukuipahu Heiau in North Kohala, Hawaii, noted for its dressed stones and its apparent Marquesan and Tahitian influences
  - ▶ Initiated land acquisition and appraisals for Laie Point and Kukaniloko Birthstones on Oahu to establish new state parks and for Wailea Beach area to expand Hapuna Beach State Recreation Area, Hawaii
  - ▶ Achieved option agreement with owners of remaining 8-acre parcel at Oneloa Beach (Big Beach), giving State option until 1991 to purchase 5.5 acres as an addition to Makena State Park, Maui
  - ▶ Completed master plan and phase I designs for Aiea Bay State Recreation Area, Oahu
  - ▶ Completed landscape improvements at State Capitol and at Russian Fort Elizabeth State Historical Park, Kauai
  - ▶ Installed new interpretive wayside exhibit at Russian Fort Elizabeth State Historical Park, Kauai
  - ▶ Expanded picnic area at Waimanalo Bay State Recreation Area, Oahu and installed additional picnic tables and barbecue grills
  - ▶ Improved tour bus parking lot at Nuuanu Pali State Wayside, Oahu
  - ▶ Retrofitted for handicapped access facilities at three state parks: lookouts at Rainbow Falls and Boiling Pots, Wailuku River State Park, Hawaii; comfort stations at Aina Moana State Recreation Area, Oahu; Kokee Lodge at Kokee State Park, Kauai; and parking area with walkway to comfort station at Waianapanapa State Park, Maui; constructed new lookout with handicapped access at Puu Ualakaa State Wayside, Oahu
  - ▶ Completed major renovation of park facilities at Mauna Kea State Recreation Area, Hawaii and at Waianapanapa State Park, Maui, and completed installation of electric space heaters at Mauna Kea and lighting in camping area and comfort station at Waianapanapa
  - ▶ Completed sewage system improvements at five state parks: replacement of comfort station and water system at Puu Ualakaa State Wayside, Oahu; replacement of comfort station and construction of outdoor shower at Lydgate Section of Wailua River State Park, Kauai; upgrading sewage pumps at Wahiawa Freshwater State Recreation Area, Oahu; and construction of self-composting toilet facilities at Makena State Park, Maui and at Hanakapiai Valley and Milolii, Na Pali Coast State Park, Kauai

- ▶ Constructed water system improvements at five state parks: water pump station and main line at Makua Section of Kaena Point State Park, Oahu; water station with chlorination system at Iao Valley State Monument, Maui; water main serving Kalanai Section of Malaekahana State Recreation Area, Oahu; water system at Waahila Ridge State Recreation Area, Oahu; and water and drainage systems at Keaiwa Heiau State Recreation Area, Oahu
- ▶ Constructed maintenance facilities at Washington Place, Oahu and Kaiaka State Recreation Area, Oahu, and renovated old hangar building for maintenance use at Old Kona Airport State Recreation Area

#### PLAN TO ACCOMPLISH 1989-90

- ▶ Initiate land acquisition for a state park at Akoakoa Point-Pololu, Hawaii and expand Sacred Falls State Park, Oahu
- ▶ Initiate studies to evaluate expansion needs for Puu o Mahuka Heiau State Monument, Oahu and Halekii-Pihana Heiaus State Monument, Maui
- ▶ Initiate preparation of park plans for Kiholo Bay area, Hawaii; Polihale State Park, Kauai; Waianapanapa State Park, Maui; and Hanauma Bay to Makapuu Point, Oahu
- ▶ Initiate plan and designs for golf course and beach park at Hapuna, Hawaii
- ▶ Hire park manager and consultant specialist to begin program development and interpretive training at Kahana Valley State Park, Oahu
- ▶ Initiate interim interpretive program at Wailua River State Park, Kauai
- ▶ Install interpretive wayside exhibits at Puu o Mahuka Heiau State Monument, Oahu and at Halekii-Pihana Heiaus State Monument, Maui
- ▶ Complete installation of emergency phones at Haena State Park and Polihale State Park on Kauai
- ▶ Replace hazardous fireplaces in housekeeping cabins at Kokee State Park, Kauai
- ▶ Undertake joint project with Hawaii Army National Guard to relocate parking area and other improvements at Sacred Falls State Park, Oahu
- ▶ Correct flood control problem at Polihale State Park, Kauai
- ▶ Begin construction for shore protection at Sand Island State Recreation Area, Oahu
- ▶ Improve water systems at Wailua River State Park, Kauai; Puua Kaa State Wayside, Maui; and Kaumahina State Wayside, Maui
- ▶ Construct additional picnic facilities at Puua Kaa State Wayside, Maui
- ▶ Hook up Paradise Pacifica with sewer system of Wailua River State Park, Kauai
- ▶ Complete construction of state parks maintenance storage building within Hilo baseyard of Division of Forestry and Wildlife
- ▶ Remove selected trees at Keolonahihi State Historical Park, Hawaii to protect archaeological resources
- ▶ Continue coordination with Hawaii Community Development Authority and Office of State Planning for development of Kakaako Waterfront State Recreation Area, Oahu



## Administration for Culture and Recreation

---

The purpose of this program is to enhance program effectiveness and efficiency by formulating overall policies and plans, directing operations and personnel, and providing other administrative and housekeeping services. Major activities include the following: general administration, planning, contract administration, and reviewing projects for compliance with historic preservation procedures and for their impact on outdoor recreation resources and opportunities. This program also administers the Land and Water Conservation Fund and the National Historic Preservation Fund, and prepares the State Historic Preservation Functional Plan and the State Recreation Functional Plan.

### State Recreation Planning

---

#### ACCOMPLISHED 1987-88

- ▶ Prepared State Wetlands Resources plan for subsequent acceptance by the U.S. National Park Service as part of the State Comprehensive Outdoor Recreation Plan
- ▶ Conducted the second annual Take Pride in America Awards Program with two of our state's entries, City and County of Honolulu and County of Maui, named national winners

#### PLAN TO ACCOMPLISH 1988-89

- ▶ Coordinate federal Land and Water Conservation Fund Program
- ▶ Coordinate third annual Take Pride in America Awards Program

#### ACCOMPLISHED 1988-89

- ▶ Achieved approval of federal grant of \$208,000 for Kailua Beach Park Acquisition II under Land and Water Conservation Fund Program
- ▶ Conducted third annual Take Pride in America Awards Program with one of our state's entries, state Department of Transportation, named a national winner

#### PLAN TO ACCOMPLISH 1989-90

- ▶ Coordinate federal Land and Water Conservation Fund Program
- ▶ Coordinate fourth annual Take Pride in America Awards Program
- ▶ Conduct Civil Rights Enforcement Compliance Workshop to provide guidance to recipient state and county agencies of Land and Water Conservation Fund Program
- ▶ Conduct statewide outdoor recreation demand survey

Left, top to bottom, *Secluded Honopu is only one reward of visiting Kauai's spectacular Na Pali Coast State Park. New handicapped access was constructed at Puu Ualakaa State Wayside, Honolulu. Makiki Christian Church, Honolulu, was added to the State Register of Historic Places. A fishpond inventory includes Huilua Fishpond, the most prominent archaeological site in Kahana Valley State Park and a National Historic Landmark.*

## Historic Preservation

---

#### ACCOMPLISHED 1987-88

- ▶ Reviewed 1,400 development projects statewide providing technical information and advice
- ▶ Established private curator program for state-owned historic sites at South Point, Hawaii; Poliahu Heiau, Kauai; Ulupo Heiau, Oahu, and Pahukini Heiau, Oahu
- ▶ Researched and placed on Hawaii Register of Historic Places ten historic properties or districts and recommended these properties for inclusion on National Register of Historic Places

#### PLAN TO ACCOMPLISH 1988-89

- ▶ Inventory all existing fishponds on islands of Oahu, Molokai and Hawaii
- ▶ Undertake interdepartmental project with Hawaiian Home Lands to survey Nanakuli ahupuaa, Oahu
- ▶ Review and comment on development projects statewide providing technical information and advice
- ▶ Research and plan additional historic properties or districts on Hawaii Register of Historic Places and recommend them for inclusion on National Register of Historic Places

#### ACCOMPLISHED 1988-89

- ▶ Reviewed and commented on 1,400 development projects statewide; provided technical information and advice
- ▶ Conducted inventory of all existing fishponds on Oahu, Molokai and Hawaii
- ▶ Undertook interdepartmental project with Hawaiian Home Lands to survey Nanakuli ahupuaa, Oahu
- ▶ Researched and placed on Hawaii Register of Historic Places eight historic properties or districts and recommended them for inclusion on National Register of Historic Places

#### PLAN TO ACCOMPLISH 1989-90

- ▶ Reorganize Historic Sites Section into separate division by obtaining appropriate approvals
- ▶ Adopt administrative rules for Historic Preservation Division
- ▶ Establish and convene burial advisory committee to advise state's program on treatment of historic burials

### The State Park System

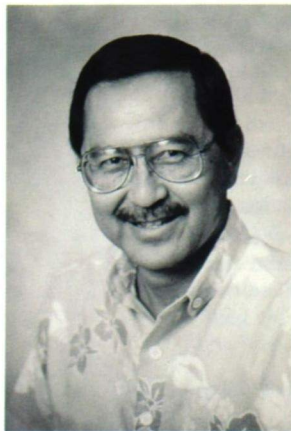
---

#### ACCOMPLISHED 1988-89

- ▶ Initiated revision of administrative rules for state park system, required because of court ruling (based on 1981 procedural error) that invalidated rules

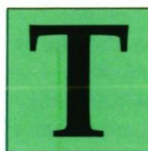
#### PLAN TO ACCOMPLISH 1989-90

- ▶ Complete revision of administrative rules for state park system
- ▶ Conduct bids for lease of concession services at Marina Section of Wailua River State Park, Kauai
- ▶ Initiate development of statewide interpretive plan and interpretive facilities



## DIVISION OF WATER & LAND DEVELOPMENT

**Manabu Tagomori**  
*Manager-Chief Engineer*



he Division of Water and Land Development administers the State's programs in the management of water resources, mineral resources assessment, flood prevention and control and water development. The Division

also provides engineering services to the other divisions of the Department. The enactment of the State Water Code and the Hawaii Dam Safety Act in 1987 began a reorganization of the Division. The responsibility for the irrigation systems was transferred to the Department of Agriculture as the Division took on a more regulatory role as staff to the Commission on Water Resource Management.

### *Basic Data Collection and Resource Assessment*

Basic climatic data (such as rainfall, temperature, wind, humidity, and solar radiation) and hydrologic data (such as water use and well characteristics) are collected, analyzed and its results disseminated in this program.

#### **ACCOMPLISHED 1987-88**

- ▶ Continued an ongoing program of collection of basic climatic and hydrologic data throughout the State, with information being disseminated through publications and the Division's Information Center

#### **PLAN TO ACCOMPLISH 1988-89**

- ▶ Conduct an inventory and assessment of all water sources and uses throughout the State, as required by the State Water Code
- ▶ Enhance the dissemination of data using new technologies

#### **ACCOMPLISHED 1988-89**

- ▶ Continued an ongoing program of collection of basic climatic and hydrologic data throughout the State, with information being disseminated through publications and the Division's Information Center
- ▶ Enhanced the Division's ability to analyze and disseminate data by acquisition of a compact disc computer system for rapid retrieval and analysis of U.S. National Weather Service climatic data and U.S. Geological Survey hydrologic data for Hawaii
- ▶ Under the State Water Code, administered a program under which 2,500 respondents registered water sources and declared water use from more than 7,000 locations throughout the State

#### **PLAN TO ACCOMPLISH 1989-90**

- ▶ Field inspect and verify the water sources and uses which were declared under the State Water Code
- ▶ Compile and analyze reports of water use to be submitted monthly by water users throughout the State
- ▶ Undertake a pilot project for real-time collection and analysis of climatic and hydrologic data using satellite telemetry technologies

### *Water Resource Planning*

The State Water Code calls for the preparation of the Hawaii Water Plan, which would identify an integrated program for the protection, conservation, and management of the waters of the state.

#### **ACCOMPLISHED 1987-88**

- ▶ Established the Commission on Water Resource Management's Administrative Rules of the State Water Code

#### **PLAN TO ACCOMPLISH 1988-89**

- ▶ Establish and fund work group(s) to develop the Hawaii Water Plan

#### **ACCOMPLISHED 1988-89**

- ▶ Funded and contracted the seven component sub-plans which comprise the Hawaii Water Plan
- ▶ Established coordination between Hawaii Water Plan sub-plan manager. Substantially completed preliminary research and data base gathering

#### **PLAN TO ACCOMPLISH 1989-90**

- ▶ Develop, write, and publish final sub-plans for incorporation into the Hawaii Water Plan
- ▶ Prepare and adopt the Hawaii Water Plan by July 1, 1990

### *Regulation of Water Development and Use*

The State Water Code calls for the declaration and certification of all existing uses of ground and surface water; the registration of all existing wells and stream diversion works; the reporting of current uses of ground or surface waters; the permitting of wells, pump installations, stream diversion works; and the designation and regulation of water management areas.

#### **ACCOMPLISHED 1987-88**

- ▶ Completed a Division of Water and Land Development study re-evaluating the groundwater conditions of the Pearl Harbor Ground Water Management Area

#### **PLAN TO ACCOMPLISH 1988-89**

- ▶ Recommended to CWRM to reduce the sustainable yields of the Koolau and Waianae basal aquifers

#### **ACCOMPLISHED 1988-89**

- ▶ Gained approval by the Commission on Water Resource Management for the reductions in sustainable yield of the Koolau and Waianae basal aquifers to 165 and 17 mgd, respectively, by 1995
- ▶ Began regulating well construction activities statewide through its permitting system
- ▶ Held public hearings for the designation of Windward Oahu and Lanai as Water Management Areas
- ▶ Processed 107 well construction permits and two pump installation permits

#### PLAN TO ACCOMPLISH 1989-90

- ▶ Continue to re-evaluate the sustainable yields of the Koolau and Waianae aquifers
- ▶ Prepare investigation and findings of fact on the designation of Windward Oahu and Lanai as Water Management Areas for Commission action

### *Soil and Water Conservation District Program*

The Division provides administrative services to the SWCD Program, which in turn, provides for the conservation and protection of farm and grazing lands and water resources through education and cooperative programs.

#### ACCOMPLISHED 1987-88

- ▶ Assisted agricultural land users by advising them on the implementation of soil and water conservation measures
- ▶ Reviewed agricultural grading plans and provided follow-up field inspections to enforce compliance with the Counties' grading ordinances
- ▶ Educated land users to protect surface and ground water from nonpoint source pollution
- ▶ Sponsored watershed projects in cooperation with the U.S. Soil Conservation Service to control flooding and soil erosion

#### PLAN TO ACCOMPLISH 1988-89

- ▶ Continue to educate farmers and ranchers in land husbandry and prevention of water pollution from nonpoint sources
- ▶ Continue to address soil erosion

#### ACCOMPLISHED 1988-89

- ▶ Continued grading ordinance and nonpoint source pollution control activities
- ▶ Completed a portion of the SCS Honolua Watershed project
- ▶ Completed soil erosion control measures to prevent feral pigs from uprooting plants and denuding highly erodible watershed soils

#### PLAN TO ACCOMPLISH 1989-90

- ▶ Continue to assist the Counties with enforcement of its grading ordinances on agricultural lands and to aid the Department of Health with its Nonpoint Source Pollution Control program

### *Regulation of Geothermal Resource Subzones*

The Department administers State laws and rules concerning exploration and development of geothermal resources.

#### ACCOMPLISHED 1987-88

- ▶ Continued to administer four geothermal resource subzones established in 1984 and 1985 by the Board of Land and Natural Resources on the islands of Hawaii and Maui
- ▶ Conducted field monitoring and inspections at all well sites to ensure compliance with the Department's rules governing the leasing and drilling of geothermal resources



Above, top to bottom, Workers revnoate the Alakahi section of the Upper Hamakua Ditch, Big Island. Construction of a water tank provides infrastructure for irrigation at Kahuku Agricultural Park, Oahu. A diversion structure at Waikolu Stream feeds water into Molokai Irrigation System.



*Division of Water and Land Development broke ground for a demonstration desalination plant at Barber's Point, Oahu. The plant will process brackish water into one million gallons per day of potable water.*

#### **PLAN TO ACCOMPLISH 1988-89**

- ▶ Regulate and monitor all activity related to the development of a proposed 25 megawatt geothermal power plant and well field facility by Puna Geothermal Venture, operator of State Geothermal Resource Mining Lease R-2
- ▶ Review and administer all exploration activities proposed by True/Mid-Pacific Geothermal Venture, operator of State Geothermal Mining Lease R-5 which was issued to Campbell Estate, on lands located in the Puna District of the island of Hawaii

#### **ACCOMPLISHED 1988-89**

- ▶ Prepared administrative rules implementing Act 301, SLH 1988 (Chapter 196-D, HRS), which establishes guidelines and procedures for consolidated geothermal and cable system development permitting
- ▶ Established a Geothermal/Cable Permit Center to provide permit information and assistance to potential applicants
- ▶ Reviewed and processed the approval of Plan of Operations for Puna Geothermal Venture and True/Mid-Pacific Geothermal Venture, and their respective well drilling permit applications for geothermal wells
- ▶ Reviewed and processed approval of geothermal well drilling permits for the University of Hawaii's proposed Scientific Observation Hole Project proposed for the islands of Hawaii and Maui

#### **PLAN TO ACCOMPLISH 1989-90**

- ▶ Review and update, as necessary, the initial county-by-county assessment of areas having geothermal resource potential which was conducted in 1983 for the purpose of designating statewide geothermal resource subzones
- ▶ Administer the consolidated review and processing of permits related to the development and transmission of geothermally generated electrical energy from the island of Hawaii to Maui and Oahu
- ▶ Continue monitoring and inspection programs for all geothermal development activities

### ***Flood Control and Prevention Program***

Under grants from the Federal Emergency Management Agency, the Division continued flood plain management activities. The implementation of Federal, State, and County flood control projects are coordinated under this program.

#### **ACCOMPLISHED 1987-88**

- ▶ Held informational meetings to increase public awareness on flood plain management activities
- ▶ Assisted in flood mitigation measures due to damage sustained in the 1988 New Year's Day flood on Oahu

#### **PLAN TO ACCOMPLISH 1988-89**

- ▶ Continue public awareness and flood plain management activities

#### **ACCOMPLISHED 1988-89**

- ▶ Conducted community assessment visits to four counties and held public informational meetings
- ▶ Continued mitigative measures due to the 1988 New Year's Day Flood

#### **PLAN TO ACCOMPLISH 1989-90**

- ▶ Conduct community assessment visits to four counties and hold public informational meetings

### ***Dam Safety Program***

This program regulates the design, construction, operation, maintenance, alteration, repair, and removal of dams in the State.

#### **ACCOMPLISHED 1987-88**

- ▶ Conducted a dam safety conference in the preparation of new administrative rules and dam safety practices

#### **PLAN TO ACCOMPLISH 1988-89**

- ▶ Prepare draft administrative rules and dam safety practices

#### **ACCOMPLISHED 1988-89**

- ▶ Held public hearings for the adoption of the administrative rules

#### **PLAN TO ACCOMPLISH 1989-90**

- ▶ Implement the Dam Safety Program

## ***Exploratory Well Drilling Program***

This program, started in 1961, locates water sources and gathers hydrologic and geologic data.

### **ACCOMPLISHED 1988-89**

- ▶ Completed six exploratory wells

### **PLAN TO ACCOMPLISH 1989-90**

- ▶ Continue exploration for new groundwater sources

## ***Engineering Services Program***

Under this program, the Division implements various water and land projects. In addition to its own projects, the Division provides engineering services to other divisions within the Department.

### **ACCOMPLISHED 1987-88**

- ▶ Completed plans and specifications for Demonstration Desalting Facility
- ▶ Completed plans and specifications for Kula Water System, Phase I

### **PLAN TO ACCOMPLISH 1988-89**

- ▶ Complete construction and evaluate application of desalting technology
- ▶ Initiate planning and design of Kula Water System, Phase II

### **ACCOMPLISHED 1988-89**

- ▶ Completed plans and specifications for four exploratory wells and opened bids
- ▶ Completed plans and specifications for Kona Marshalling Yard, Phase II and opened bids

### **PLAN TO ACCOMPLISH 1989-90**

- ▶ Initiate construction of the wells and evaluate groundwater data
- ▶ Initiate construction of the Kona Marshalling Yard, Phase II

## ***Irrigation Services Program***

The Department operated the Waimanalo, Waimea, and Molokai Irrigation Systems until their transfer to the Department of Agriculture in 1989. The Division will continue to provide engineering services for the irrigation systems.

### **ACCOMPLISHED 1987-88**

- ▶ Made emergency repairs to flumes, reservoirs and ditches as a result of damages caused by Flash Flood 1/1/88, Waimanalo Irrigation System
- ▶ Approved and installed 14 water meters to lessees of the Waimanalo Ag Park, Phase I
- ▶ Completed Maunawili Ditch Improvements, Waimanalo Irrigation System
- ▶ Held monthly informational meetings with Department of Agriculture staff to effectuate the transfer of irrigation systems
- ▶ Drilled and tested three exploratory wells in Waikolu Valley, Molokai
- ▶ Prepared engineering plans and specifications for replacement of an electrical transformer in Waikolu Valley pumphouse
- ▶ Delivered 1.7 billion gallons of water, charged at \$494,900

### **PLAN TO ACCOMPLISH 1988-89**

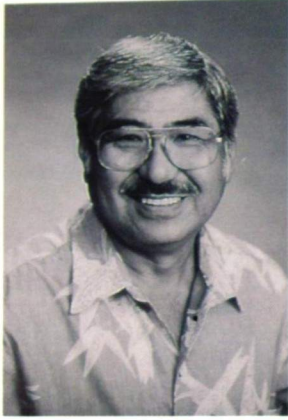
- ▶ Construct second spillway at Kailua Reservoir, Waimanalo Irrigation System
- ▶ Install a 16" wye strainer on transmission main line feeding Waimanalo Ag park, Phase I
- ▶ Finalize contract drawings and specifications for closed pipe irrigation at Waimanalo Irrigation System
- ▶ Prepare engineering plans and contracts to install pumping units for Waikolu wells, Molokai Irrigation System
- ▶ Rehabilitate Kualapuu Reservoir bank, Molokai Irrigation System
- ▶ Finalize transfer of three irrigation systems from DLNR to DOA
- ▶ Repair catwalk and sluice gate at Kailua Reservoir, Waimanalo

### **ACCOMPLISHED 1988-89**

- ▶ Completed engineering drawings and specifications for Upper Hamakua Ditch Improvements, Alakahi and Koiawe Sections, Waimea Irrigation System
- ▶ Completed engineering drawings and specifications, opened bids and awarded contract for lining of Puu Pulehu Reservoir, Waimea Irrigation System
- ▶ Repaired four elevated wooden flumes at Waimanalo Irrigation System
- ▶ Installed new catwalk and repaired sluice gate at Kailua Reservoir, Waimanalo
- ▶ Finalized prepayment of Molokai Irrigation Project loan
- ▶ Approved seven applications for irrigation services and installed service connection to lessees of Molokai Ag Park, Phase II
- ▶ Finalized transfer of three irrigation systems from DLNR to DOA
- ▶ Finalized engineering drawings and contract specifications to construct a new spillway at Kailua Reservoir, Waimanalo
- ▶ Delivered 1.6 billion gallons of water, charged at \$427,500
- ▶ Formed the M.I.S. Water Users Advisory Board and held bimonthly informational meetings

### **PLAN TO ACCOMPLISH 1989-90**

- ▶ Install connecting pipeline and controls for Waikolu well pumps, Molokai Irrigation System
- ▶ Reconstruct existing catwalk and railings at East Portal, Molokai tunnel
- ▶ Conduct additional rehabilitation to Kualapuu Reservoir bank, Molokai Irrigation System
- ▶ Repair approximately 310 lineal feet of concrete ditch downstream of Aniani tunnel, Waimanalo
- ▶ Finalize contract drawings and specifications for telemetering Molokai Irrigation System
- ▶ Prepare engineering drawings and contract specifications for Phase II of UHD improvements, Waimea Irrigation System
- ▶ Prepare engineering drawings and contract specifications for second phase improvements of Puu Pulehu Reservoir Lining, Waimea
- ▶ Prepare engineering drawings and contract specifications to develop Puukapu Well, Waimea
- ▶ Prepare engineering drawings and contract specifications to construct a 60 mg reservoir for Waimanalo Irrigation System



## LAND MANAGEMENT DIVISION

**Mike K. Shimabukuro**  
*Administrator*

**T**he public land management program involves the management and control of all State-owned lands defined as public lands under Section 171-2 Hawaii Revised Statutes and to assume the effective and efficient use of these lands for both public and private purposes in accordance with established policies. Lands that are not encumbered for use by other government agencies come within the immediate control of the Land Management Division. These lands are made available to the public by sale, lease or month-to-month tenancies.

The Division also has the responsibility of acquiring private lands that are required for public purposes by negotiation, land exchange, or condemnation (eminent domain). Acquisition is initiated when a user agency (such as the Department of Education, Department of Agriculture, Division of State Parks, or Division of Forestry and Wildlife) submits a request to acquire property for public purposes such as school sites, agricultural parks, State parks, or Natural Area Reserve.

### ACCOMPLISHED 1987-88

- ▶ Processed 11 Executive Orders issued by the Governor totalling 28,582.425 acres of land for a plant sanctuary, parks, harbors, and water systems
- ▶ Acquired private lands for public purposes, totalling 185.807 acres and costing \$12,048,227, for school sites, park sites, prisons, and wildlife sanctuaries
- ▶ Issued 15 leases and 56 revocable permits for private use of State lands, generating \$133,475 in revenues
- ▶ Sold land parcels to individuals and government agencies, for \$249,746
- ▶ Transferred the entire industrial subdivision of "Shafter Flats" to the Department of Hawaiian Home Lands (DHHL) for their management and control, the result of a land exchange with DHHL in return for Hawaiian Home Lands used for airports at Hilo and Waimea, Hawaii, and on Molokai
- ▶ Successfully consummated a three-agency land exchange involving Hawaii Housing Authority, DLNR and DHHL, resulting in DHHL acquiring 150 improved residential lots at Waianae, Oahu
- ▶ Generated \$10,026,073 in revenues, of which \$1,105,701 was transferred to the Office of Hawaiian Affairs (OHA), \$727,389 to DHHL, and \$4,400,404 to the State's general fund

### PLAN TO ACCOMPLISH IN 1988-1989

- ▶ Establish rules and procedures for "shoreline certification"
- ▶ Process Executive Orders for setting aside State lands for various purposes
- ▶ Issue leases and permits to the private sector
- ▶ Acquire land for public purposes
- ▶ Designate and develop State lands for industrial parks
- ▶ Convert lands under permit to long-term leases

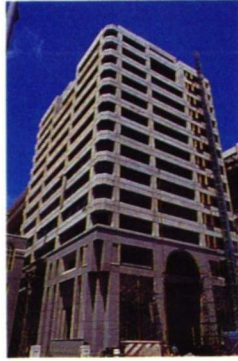
### ACCOMPLISHED IN 1988-1989

- ▶ Processed 26 Executive Orders issued by the Governor totalling 1,036.515 acres, setting aside State lands for agricultural parks, police station, library site, school site, plant sanctuary, sewer pump station, highways, morgue facility and Natural Area Reserves
- ▶ Acquired 35,817 acres of private lands for \$22,665,087, necessary to accomplish projects where State lands were unavailable
- ▶ Issued 15 leases and 67 month-to-month permits to the private sector for general agricultural, pasture, industrial, commercial and cane cultivation uses, generating \$173,234 in revenues
- ▶ Received from the State Legislature a substantial increase in the land management fund, from \$200,000 to \$500,000
- ▶ Hired appraiser and land surveyors to complete conversion of agricultural and residence/home gardening permits to long-term leases mandated by the Legislature
- ▶ Processed 193 applications for conversion of permits to leases
- ▶ Implemented "shoreline certification" and began establishing shorelines for "set-back" purposes where improvement such as homes must be built at an established distance away from the shoreline
- ▶ Completed acquisition of land for Phase I of the Kapolei housing project and transferred it to Housing Finance and Development Corporation to develop moderate-priced housing
- ▶ Acquired by land exchange with HFDC an 89.5-acre parcel at Kaneohe, Oahu, for a veteran's cemetery and 33 acres donated by Hawaiian Memorial Park, and began processing the transfer of these lands to the Department of Defense for development and operation of a second veterans' cemetery on Oahu
- ▶ Generated \$10,484,110 in revenues, of which \$1,135,385 was transferred to OHA, \$372,306 to DHHL, and \$4,173,463 to the State's general fund

### PLAN TO ACCOMPLISH IN 1989-1990

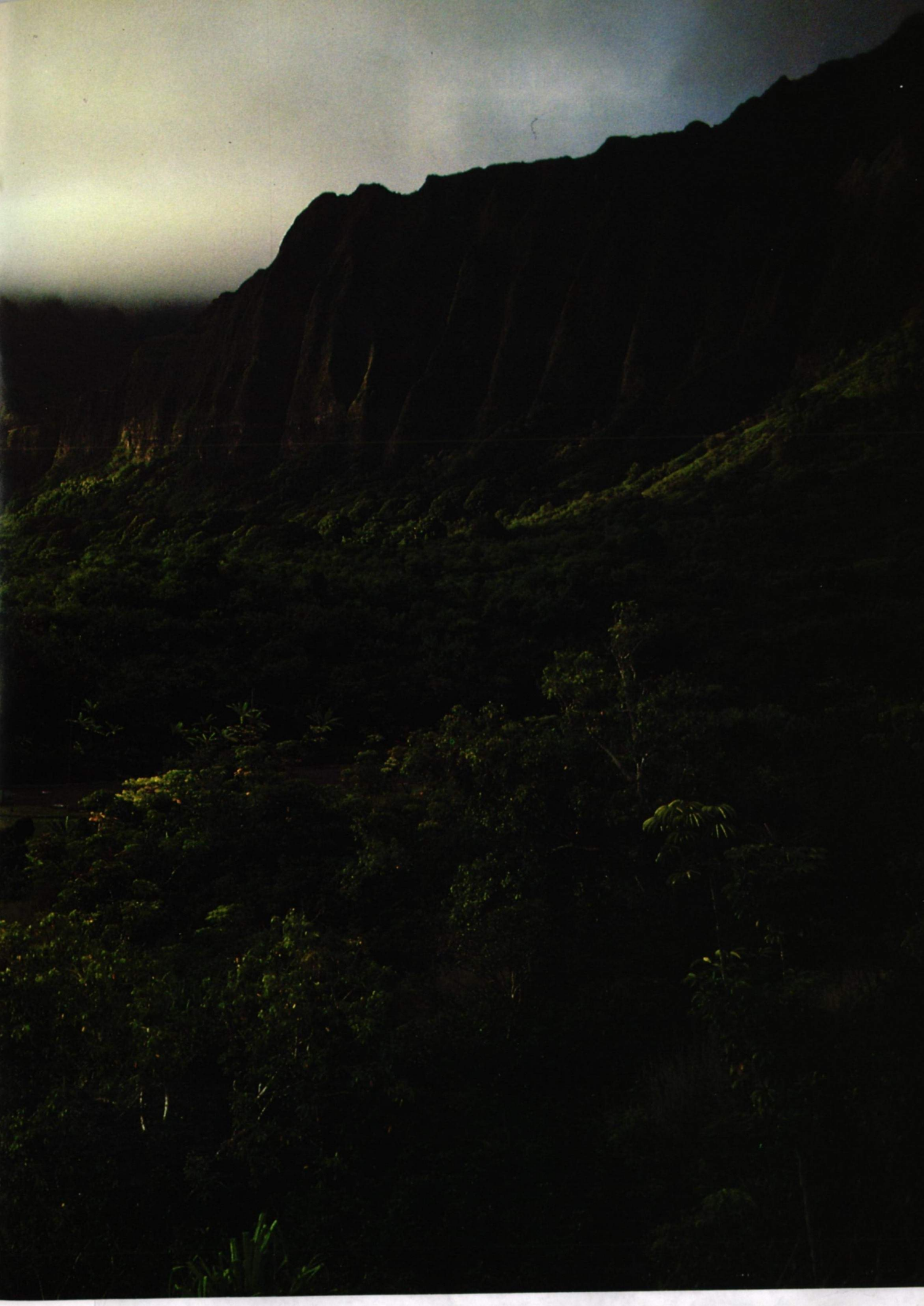
- ▶ Process Executive Orders for setting aside State lands
- ▶ Convert short-term permits to leases
- ▶ Issue leases and permits
- ▶ Acquire private lands for public purposes
- ▶ Establish shorelines for set-back purposes

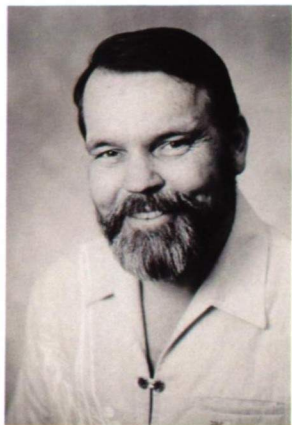
*Clockwise from top left, Acquisition of a conservation easement allowed preservation of Honokahua Burial Site, Maui. Site of the former Galen Building was acquired for the new State Office Building. An additional 19.5 acres were acquired near Ulupo Heiau, Oahu, as part of Kawainui Marsh Resource Management Plan. Purchase of a property at Laie Point State Park, Oahu, expanded the scenic viewpoint area. Kapolei Village, Oahu, is a state-sponsored housing project on 888 acres acquired from Campbell Estate.*



*The Department of Land and Natural Resources integrates management responsibilities for compatible human uses and protection of Hawaii's diverse natural resources ranging from mountain watersheds to submerged coral reefs.*

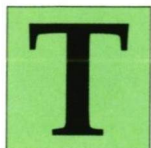






# AQUACULTURE DEVELOPMENT PROGRAM

**John S. Corbin**  
*Manager*



he Aquaculture Development Program (ADP) prepares and implements State policies and plans to expand Hawaii's aquaculture production and service industries and create jobs and diversify the economies of all Islands.

ADP carries out statewide planning and coordination and provides development support services that address such areas as business information, disease prevention, permits, sites, species, promotion, feasibility studies and marketing. ADP also funds and co-funds applied research, development and demonstration projects to improve yields and reduce production costs for existing species and encourage the development of new species and systems.

Overall efforts concentrate on improving the business climate, promoting investments, products and services and assisting in start-ups. Once a farm is in place, ADP directly assists a company with solving problems and improving operations through its staff and research budget.

Results have been encouraging since the publication of the first State aquaculture plan in 1978. Hawaii has invested about \$12 million in operating funds from 1978 to 1988, mostly through ADP, and has generated over \$90 million of direct industry revenues and in excess of \$200 million in total economic impact from aquaculture developments. Industry growth from 1986 to 1989 has averaged fifteen percent per year.

## ACCOMPLISHED 1987-88

- ▶ Established the Hawaii Aquaculture Advisory Council as the coordinating body for statewide aquaculture development
- ▶ Assisted in forming an Aquaculture Commodities Group within the Hawaii Farm Bureau Federation
- ▶ Assisted in the start-up of the U.S. Department of Agriculture Regional Aquaculture Center located in Hawaii, through membership on the Board of Directors and various working committees
- ▶ Initiated organization of a Statewide Aquaculture Extension Advisory Network to upgrade service to the expanding industry
- ▶ Increased marketing and promotion efforts for Hawaii's products, services and investment opportunities, including logo and brochure development, participation in professional meetings and trade shows, and active networking with other State and County agencies having similar economic development missions





#### PLAN TO ACCOMPLISH 1988-1989

- ▶ Prepare and publish a new Aquaculture Information Bulletin
- ▶ Coordinate the preparation of an Extension and Advisory Network Action Plan
- ▶ Complete a Conceptual Plan for a pond research, training and demonstration facility in cooperation with the University of Hawaii
- ▶ Continue high-profile marketing efforts for Hawaii's products, services and investment opportunities through various direct and indirect marketing activities
- ▶ Participate in the planning of the Federal Center for Applied Aquaculture in cooperation with the Oceanic Institute and the University of Hawaii
- ▶ Prepare a small-scale aquaculture "how to" manual for dissemination to Hawaii residents in cooperation with Windward Community College

#### ACCOMPLISHED 1988-89

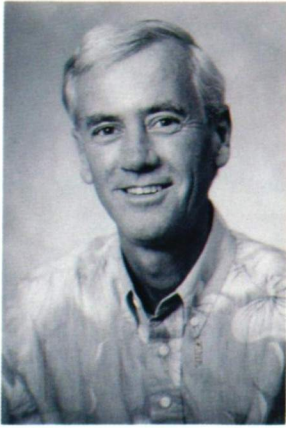
- ▶ Disseminated the Extension and Advisory Network Action Plan to members of the network; started various implementation activities
- ▶ Published a Conceptual Plan for a pond research, training and demonstration facility; received appropriation of Phase I planning and design funds from the 1989 Legislature
- ▶ Published the first Aquaculture Information Bulletin and prepared an annual Research-In-Progress Bulletin
- ▶ Coordinated the Departmental aquaculture display and industry participation in the State Farm Fair, and participated in several out-of-state professional meetings and trade shows

#### PLAN TO ACCOMPLISH 1989-1990

- ▶ Complete planning and design for Phase I of a pond research, training and demonstration facility and prepare request for construction funds
- ▶ Prepare an update of the State aquaculture development strategy and plan
- ▶ Distribute a small-scale aquaculture "how to" manual and implement a statewide training and technology transfer program to popularize small-scale aquaculture through Windward Community College
- ▶ Continue participation in the planning for the Federal Center for Applied Aquaculture
- ▶ Interact with the University of Hawaii (UH) in the development of a Program Strategy for Aquaculture at UH
- ▶ Continue high-profile marketing efforts for Hawaii's products, services and investment opportunities through various direct and indirect marketing activities and cooperative arrangements
- ▶ Design and begin implementation of a project to identify more sites for commercial aquaculture development

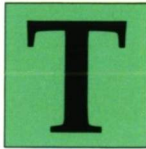


Left, Aquaculture farmers at Punaluu, Oahu, harvest freshwater prawns, one of Hawaii's leading aquaculture products. Above, Abalone raised at the Natural Energy Laboratory of Hawaii at Kealahou Point, Big Island, have become a gourmet restaurant item.



## OFFICE OF CONSERVATION & ENVIRONMENTAL AFFAIRS

**Roger C. Evans**  
*Administrator*



he Office of Conservation and Environmental Affairs (OCEA) coordinates conservation and environment-related matters for the department in collaboration with its operating divisions, the Department of the Attorney

General, the Department of Accounting and General Services and the counties of the state. OCEA maintains constant awareness of environmental factors affecting the state's natural resources and proposed activities on public and private lands zoned Conservation.

Under the direction of the Chairperson, OCEA processes all Conservation District Use Applications (CDUA's). One of the most important functions of this office is developing departmental positions and recommendations regarding the use of the state's natural resources.

These positions and recommendations are developed with federal, state and county agencies, public and private organizations and individuals. The policies often involve environmental impacts of proposed actions by government and private-sector projects on Conservation Lands. The Office of Conservation and Environmental Affairs also issues policies relating to land and natural resources and to petitions from the State Land Use Commission.

This office also processes requests for film permits for Conservation Districts and state lands, and handles inquiries and complaints from the general public.

OCEA also maintains a central library of publications relating to natural resources and the department's programs.

### **CDUA's**

#### **ACCOMPLISHED 1987-88**

- ▶ Using the Office Wang Network, developed a computer printout of all applications and correspondence so that it can be updated on a daily basis
- ▶ Issued decisions on 117 CDUAs, of which 50 had public hearings
- ▶ Issued one temporary variance
- ▶ Issued 10 CDUA amendments or modifications

#### **PLAN TO ACCOMPLISH 1988-89**

- ▶ Reduce client complaints relative to long processing shows an increasing times and "red tape"

*Office of Conservation and Environmental Affairs reviewed and recommended for Board approval a Conservation District Use Application (CDUA) from a commercial tour operator. The applicant sought to place artificial reefs and moorings on the ocean bottom off Waikiki to create an "authentic underwater experience" for divers and passengers. Submerged lands out to the Hawaii territorial limit are part of the Conservation District.*

#### **ACCOMPLISHED 1988-89**

- ▶ Established a new statistical category that percentage of applicants returning to the Board for time extensions as they were unable to start construction within one year after Board approval of their projects
- ▶ Issued decisions on 130 CDUAs, of which 51 had CDUA public hearings and 7 had other hearings
- ▶ Issued 11 temporary variances
- ▶ Issued 29 amendments or modifications of which 17 were for projects unable to start within one year of Board approval

#### **PLAN TO ACCOMPLISH 1989-90**

- ▶ Transfer our CDUA history from the Hawaii Permit and Application Support System (HPASS) to OCEA system using Data Base IV
- ▶ Establish a client feedback system similar to that of the private sector where customers can judge the quality of service provided them

### **Environmental Affairs**

#### **ACCOMPLISHED 1987-88**

- ▶ Implemented Wang VS System to include electronic mail
- ▶ Reduced the turnaround time on correspondence to 60 days



- ▶ Completed 599 environmental reviews
- ▶ Reduced the film permit process to 48 hours
- ▶ Acted upon 372 film permit requests and collected \$53,445 in revenues

#### PLAN TO ACCOMPLISH 1988-89

- ▶ Reduce turnaround time on correspondence to 30 days

#### ACCOMPLISHED 1988-89

- ▶ Reduced turnaround time on correspondence to 30 days
- ▶ Completed 791 environmental reviews
- ▶ Acted upon 566 film permit requests and collected \$19,326 in revenues

#### PLAN TO ACCOMPLISH 1989-90

- ▶ Complete and submit for Board guidance a value capture policy, by which a portion of the increase in value to the private sector resulting from a State regulatory permit may be returned to the taxpayer

### Investigations

#### ACCOMPLISHED 1987-88

- ▶ Recorded 99 complaints of Conservation District violations and collected \$8,546 in fines

- ▶ Provided the required follow-up on land use violations by incorporating land use violations into after-the-fact CDUA's, with two separate recommendations to the Board, one pertaining to the violation and one to the application itself

- ▶ Reduced investigation overlap between divisions by having each division be responsible for leading initial investigation with assistance of enforcement division, and by providing enforcement district officers with blank signed Cease-and-Desist Orders

#### PLAN TO ACCOMPLISH 1988-89

- ▶ Improve our enforcement processing quality

#### ACCOMPLISHED 1988-89

- ▶ Produced USGS Conservation District subzone quad maps in field book format for use by our enforcement officers in their daily rounds
- ▶ Recorded 81 complaints of Conservation District violations and collected \$18,301 in fines

#### PLAN TO ACCOMPLISH 1989-90

- ▶ Using our new computer system, complete a Conservation District enforcement data base
- ▶ Attain statewide consistency in the treatment of natural resources



## ADMINISTRATIVE SERVICES OFFICE

**Anne Y. Furuuchi**

*Fiscal Management Officer*



The Administrative Services Office provides general support, internal management, and fiscal services to the Chairperson and Members of the Board, and to the staff and operating units of the Department. This office also coordinates the preparation and implementation of the operating and capital improvement project budgets, coordinates and provides internal and external audit functions for the Department, and coordinates and assists with the electronic data processing and other telecommunications needs of the Department.

### ACCOMPLISHED 1987-88

- ▶ Assisted approximately 200 users in implementing the following computer applications:
  1. Automated Departmental Information System (ADIS) Phase I, to provide for the integration of existing and future information systems of the department
  2. Land Court Automated Title System (LCATS), to automate the processing of the Bureau of Conveyances Land Court registration documents
  3. Automated Revenue Accounting System (ARAS), to provide the department with the ability to automate the revenue and accounts receivable cycle
  4. State Parks Reservation and Visitor Information System (SPRVIS), to allow for the issuance of permits and reservations for any State Park facility in the State
- ▶ Installed electronic telephone systems for our divisions in the Hilo State Office Building

### PLAN TO ACCOMPLISH 1988-89

- ▶ Assist approximately 200-225 users in implementing the following computer applications:
  1. Land Court Automated Title System (LCATS) Phase II, to add needed equipment to eliminate current backlog and meet objective of a 10-day turn-around for registration of documents
  2. State Parks Division Historic Sites Section System, to facilitate the connection of several State departments' computer systems for access to respective data bases
  3. Fisheries Information System Hawaii (FISH), to automate and integrate five (5) data bases for the Division of Aquatic Resources
  4. DOFAW Office Automation System, to integrate document filing, data management, fiscal management, graphics and electronic mail for the Division of Forestry and Wildlife
  5. DOWALD Office Automation System, to facilitate automation of monitoring, records management and document processing for the Division of Water and Land Development
  6. Aquaculture Development Program Computer System, to acquire a microcomputer system
- ▶ Interface with DAGS' FAMIS accounting system to enhance capital improvement project (CIP) reports for divisions
- ▶ Install electronic telephone systems for our divisions in the Maui and Kauai State Office Buildings

### ACCOMPLISHED 1988-89

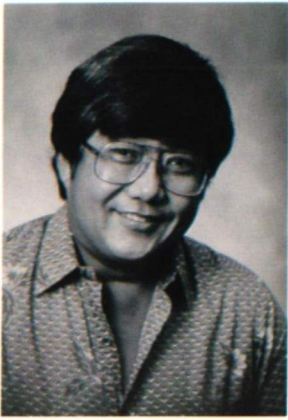
- ▶ Assisted approximately 200-225 users in implementing the following computer applications:
  1. Land Court Automated Title System (LCATS) Phase II
  2. State Parks Division Historic Sites Section System
  3. Fisheries Information System Hawaii (FISH)
  4. DOFAW Office Automation System
  5. DOWALD Office Automation System
  6. Aquaculture Development Program Computer System
- ▶ Interfaced with DAGS' FAMIS accounting system to enhance capital improvement project (CIP) reports for divisions
- ▶ Installed electronic telephone systems for our divisions in the Maui and Kauai State Office Buildings
- ▶ Received Legislative approval for two permanent positions - Data Processing Systems Analyst and Program Budget Analyst - to assist the divisions and staff offices with their computer and budget needs



*Above top, Administrative Services staff process all financial transactions for the Department, including petty cash vouchers for reimbursement. The cashier collects revenues from people leasing state land for commercial, agricultural or residential uses.*

#### PLAN TO ACCOMPLISH 1989-90

- ▶ Reorganize our office to reflect added positions and responsibilities over the years
- ▶ Assist approximately 250 users in implementing the following computer applications:
  1. Automated Department Information System (ADIS) Phase II, to provide additional workstations to our Local Area Network
  2. DOCARE Enforcement Information System, to automate the operations and activities of the Enforcement Division
  3. OCEA Office Automation Information System, to provide immediate access to conservation district use applications (CDUA) for reference and information
  4. SPRVIS Phase II, enhancements to improve design, telecommunications and fiscal accountability and correct deficiencies
  5. Division of Aquatic Resources (DAR) Licensing System, to consolidate licensing and fish report collection
  6. FISH Phase II, to integrate and incorporate all existing and planned DAR data bases for commercial fisheries
  7. Aquaculture Information Access and Management System, to enhance access to various state and national data bases
  8. State Parks Office Information System, to facilitate a more efficient operation and development of State parks
  9. Anuenue Fisheries Research System (AAIPS), to develop a comprehensive data base system to facilitate report generation and data analysis
  10. DOWALD CAD/CAM System (CMS) and Office Automation System, to automate the engineering design, plotting, planning, drafting and mapping work of the division
- ▶ Enhance telephone system in line with Budget and Finance's change from Centrex to SELEX
- ▶ Improve payment processing to meet 30-day payment deadline to vendor effective January 1, 1990, per Act 389, SLH 1988



## PERSONNEL OFFICE

**Melvin H.C. Young**  
*Personnel Officer*



he Personnel Office maintains a comprehensive personnel program for the Department. The staff provides supportive services to the Chairperson, the Board, the seven operating divisions and the five staff offices.

Major services include guidance and technical assistance in position classification, employee relations, and employee training and development for nearly 600 employees. The Office also assists the divisions and staff offices in carrying out the collective bargaining contracts and the grievance process. The Office maintains a centralized system for processing, recording, reporting, and filing the personnel transactions and records of all employees. The Personnel Office prepares and makes recommendations for the adoption of personnel policies and procedures within the Department. Finally, the Office works with the divisions and staff offices in developing and updating the organization plans.



### ACCOMPLISHED 1987-1988

- ▶ Established 29.5 new positions
- ▶ Processed 3751 personnel transactions
- ▶ Filled 67 vacant positions
- ▶ Updated departmental organization charts
- ▶ Developed departmental Affirmative Action Plan

### PLAN TO ACCOMPLISH 1988-1989

- ▶ Establish 13.0 new positions
- ▶ Process 3750 personnel transactions
- ▶ Fill 70 vacant positions
- ▶ Update department organization charts including reorganization proposals for the Commission on Water Resource Management and Division of Conservation and Resources Enforcement
- ▶ Update departmental Affirmative Action Plan

### ACCOMPLISHED 1988-1989

- ▶ Established 13.0 new positions
- ▶ Processed 3554 personnel transactions
- ▶ Filled 54 vacant positions
- ▶ Updated departmental organization charts with draft reorganization proposals for the Commission on Water Resources Management and Division of Conservation and Resources Enforcement
- ▶ Updated departmental Affirmative Action Plan and developed a departmental Civil Rights pamphlet

### PLAN TO ACCOMPLISH 1989-1990

- ▶ Establish 51.0 new positions
- ▶ Process 3750 personnel transactions
- ▶ Fill 75 vacant positions
- ▶ Update departmental organization charts with draft reorganization proposals for the State Historic Preservation Division and Division of State Parks
- ▶ Update departmental Affirmative Action Plan

*Personnel Office staff  
prepare employment data  
for annual Departmental  
Affirmative Action Plan.*



### **Photo Credits**

Douglas Peebles: Cover

Atlantis Submarines Hawaii, L.P.: pages 38-39

Michael G. Buck: Pages 4-5, 19, 20, 22, 23, 26, 32-33, 43

Bill Ching: Page 29

C. Richard Fassler: Pages 10, 36

Annie Griffin: Page 35

Don Hibbard: Page 26

Glenn Higashi: Page 11

Housing Finance and Development Corporation: Page 35

Wendell W.S. Kam: Page 14

Brian Kanenaka: Page 8-9

Linda McCreery: Page 15

George Morimoto: Page 30

Morris Ota: Page 29

Dean Toda: Page 37

Ronald L. Walker: Page 21

Mark Williford: Pages 16, 17, 24-25, 26, 35, 41, 42

Martha Yent: Page 26

Annette Young: Page 12

Eric Yuasa: Page 29

**Design** Steve Shrader, Graphic Design

**Typesetting** The Other Type

**Color Separations** KWA Communications, Inc.

**Printing** Tongg Publishing Company

