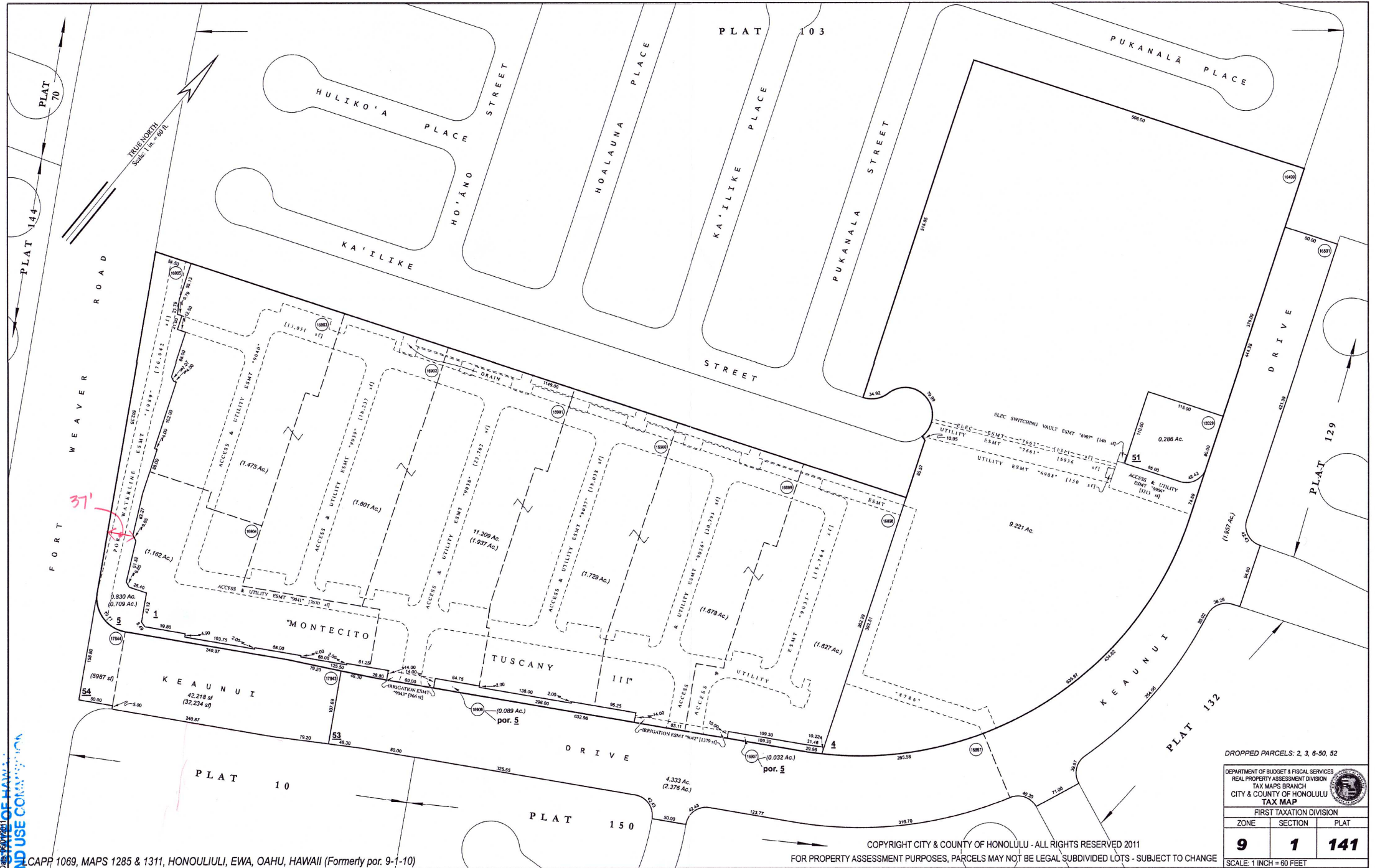


RECEIVED  
SEP 24 2025

DEPARTMENT OF BUDGET & FISCAL SERVICES  
LAND USE COMMISSION



COPYRIGHT CITY & COUNTY OF HONOLULU - ALL RIGHTS RESERVED 2011  
FOR PROPERTY ASSESSMENT PURPOSES, PARCELS MAY NOT BE LEGAL SUBDIVIDED LOTS - SUBJECT TO CHANGE

DROPPED PARCELS: 2, 3, 6-50, 52

DEPARTMENT OF BUDGET & FISCAL SERVICES REAL PROPERTY ASSESSMENT DIVISION TAX MAPS BRANCH CITY & COUNTY OF HONOLULU TAX MAP		
FIRST TAXATION DIVISION		
ZONE	SECTION	PLAT
9	1	141
SCALE: 1 INCH = 60 FEET		