

May 18, 2011

**Notification of Second Amended Petition Filing**

This is to advise you that a Second Amended Petition to amend the State Land Use District Boundaries with the following general information has been submitted to the State Land Use Commission:

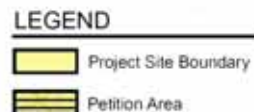
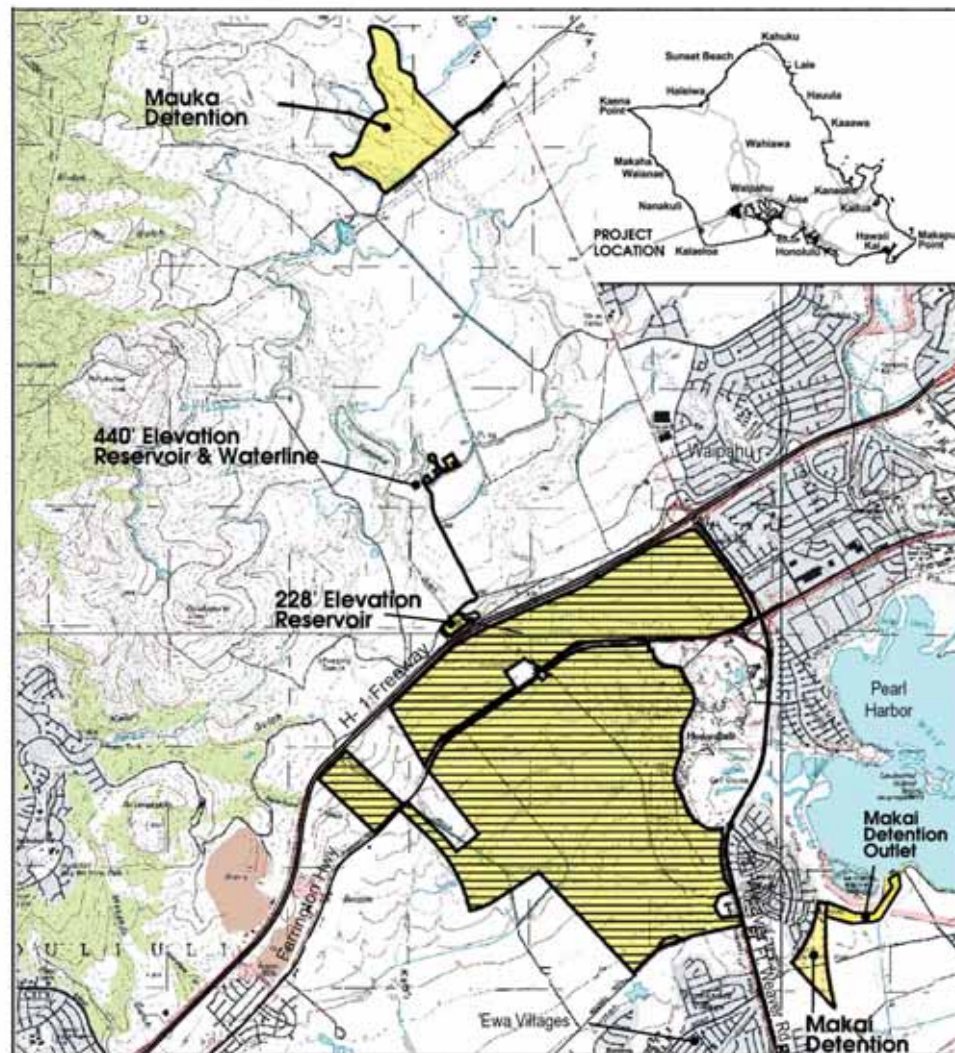
Docket No.: A06-771  
Petitioner/Address: D.R. Horton – Schuler Homes, LLC, a Delaware limited liability company, d.b.a. D.R. Horton–Schuler Division  
650 Iwilei Road, Suite 209  
Honolulu, Hawaii 96817  
Landowner: D.R. Horton – Schuler Homes, LLC, a Delaware limited liability company, d.b.a. D.R. Horton–Schuler Division  
Tax Map Key Numbers: (1) 9-1-017:004 (por.), 059 and 072  
(1) 9-1-018:001 and 004  
Location: Honouliuli, Ewa District, Oahu, Hawaii  
Requested Reclassification: Agricultural to Urban  
Acreage: Approximately 1,553.844 acres  
Proposed Uses: A mixed-use, transit-ready community including residential, business, and commercial areas; and transit stations, schools, parks, farms, open space and roads

You may review detailed information regarding the petition at the State Land Use Commission (“Commission”) or the City and County of Honolulu, Department of Planning and Permitting (“DPP”).

The Commission office is located at 235 S. Beretania Street, Room 406, Honolulu, Hawaii. Office hours are from 7:45 a.m. to 4:30 p.m., Monday through Fridays. The DPP office is located at 650 South King Street, Honolulu, Hawaii. Office hours are from 7:45 a.m. to 4:30 p.m., Mondays through Fridays.

A hearing on this petition will be scheduled at a future date. If you are interested in participating in the hearing as a public witness, please write or call the Commission office at P.O. Box 2359, Honolulu, Hawaii 96804-2359; telephone (808) 587-3822.

If you intend to participate in the hearing as an intervenor pursuant to § 15-15-52, Hawaii Administrative Rules, you should file a Notice of Intent to Intervene with the Commission within 30 days of the date of this notice. Please contact the Commission office for further information.



Source: US Geological Survey  
Disclaimer: This graphic has been prepared for general planning purposes only.

