

January 24, 2007

Notification of Petition Filing

This is to advise you that a petition to amend the State Land Use District Boundaries with the following general information has been submitted to the State Land Use Commission:

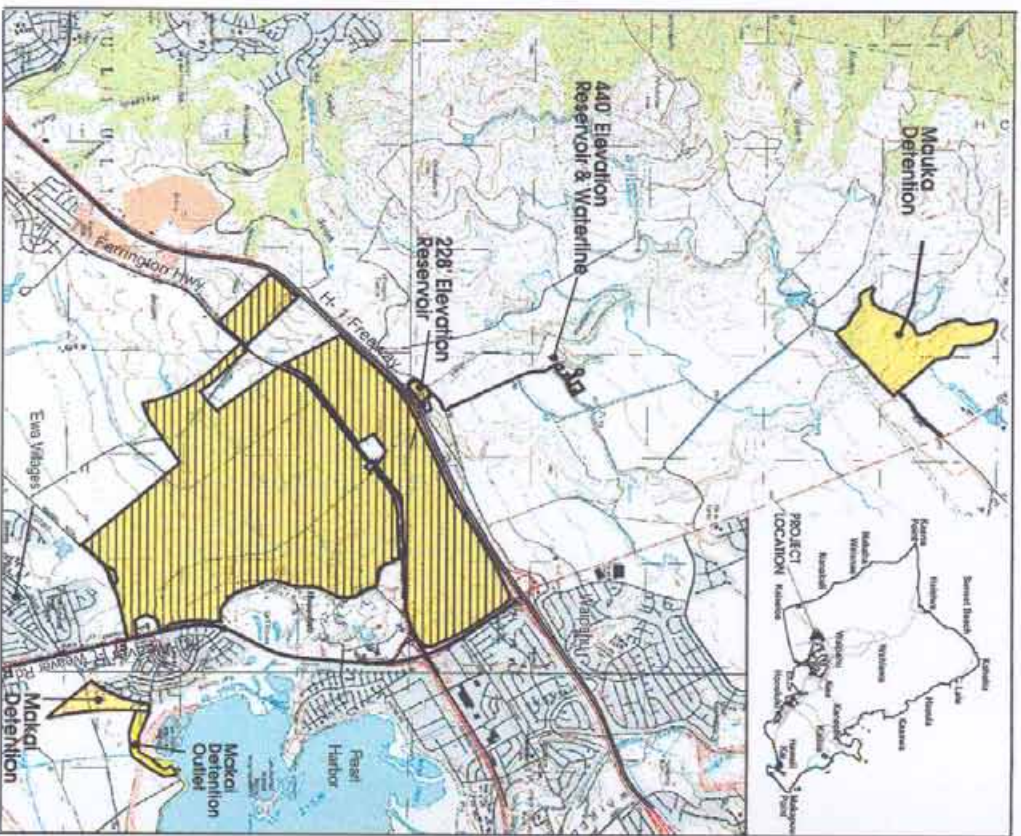
Docket No.: A06-771
Petitioner/Address: D.R. Horton – Schuler Homes, LLC, a Delaware limited liability company, d.b.a. D.R. Horton – Schuler Division
828 Fort Street Mall, 4th Floor
Honolulu, Hawaii 96813
Landowner: D.R. Horton – Schuler Homes, LLC, a Delaware limited liability company, d.b.a. D.R. Horton – Schuler Division
Tax Map Key Numbers: (1) 9-1-17: por. 04, 59 and 72
(1) 9-1-18: 01 and 04
Location: Honolulu, Ewa District, Oahu, Hawaii
Request Reclassification: Agricultural to Urban
Acreage: Approximately 1,553,844
Proposed Uses: A mixed-use, transit-ready community including residential, business, and commercial areas; and transit stations, schools, parks, open space and roads

You may review detailed information regarding the petition at the Land Use Commission (“Commission”) office or the City and County of Honolulu, Department of Planning and Permitting.

The Commission’s office is located at 235 S. Beretania Street, Room 406, Honolulu, Hawaii. Office hours are from 7:45 a.m. to 4:30 p.m., Mondays through Fridays.

A hearing on this petition will be scheduled at a future date. If you are interested in participating in the hearing as a public witness, please write or call the Commission office at P.O. Box 2359, Honolulu, Hawaii 96804-2359; telephone (808) 587-3822.

If you intend to participate in the hearing as an intervenor, pursuant to § 15-15-52, Hawaii Administrative Rules, you should file a Notice of Intent to Intervene with the Commission within 30 days of the date of this notice. Please contact the Commission office for further information.



LEGEND
Project Site Boundary
Petition Area

HO'OPILI
Oahu, Hawaii



Source: US Geological Survey
Disclaimer: This graphic has been prepared for general informational purposes only.

Exhibit "17"