

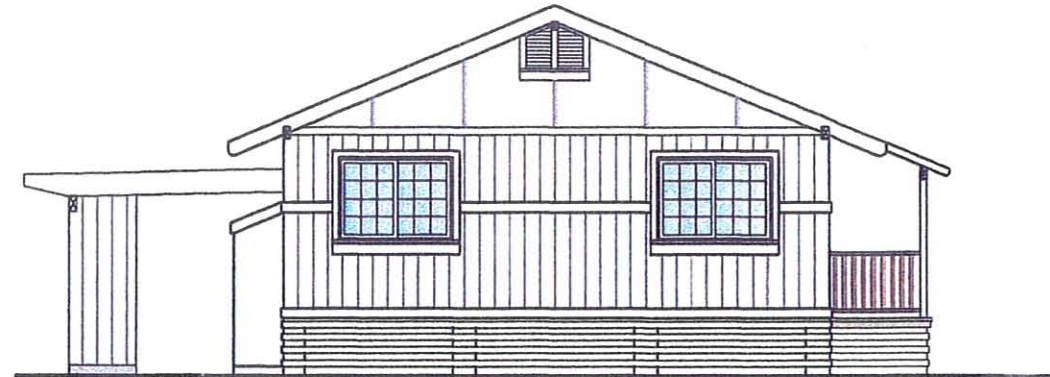
FLOOR PLAN - MODEL 'B'



FRONT ELEVATION



RIGHT ELEVATION



REAR ELEVATION



LEFT ELEVATION



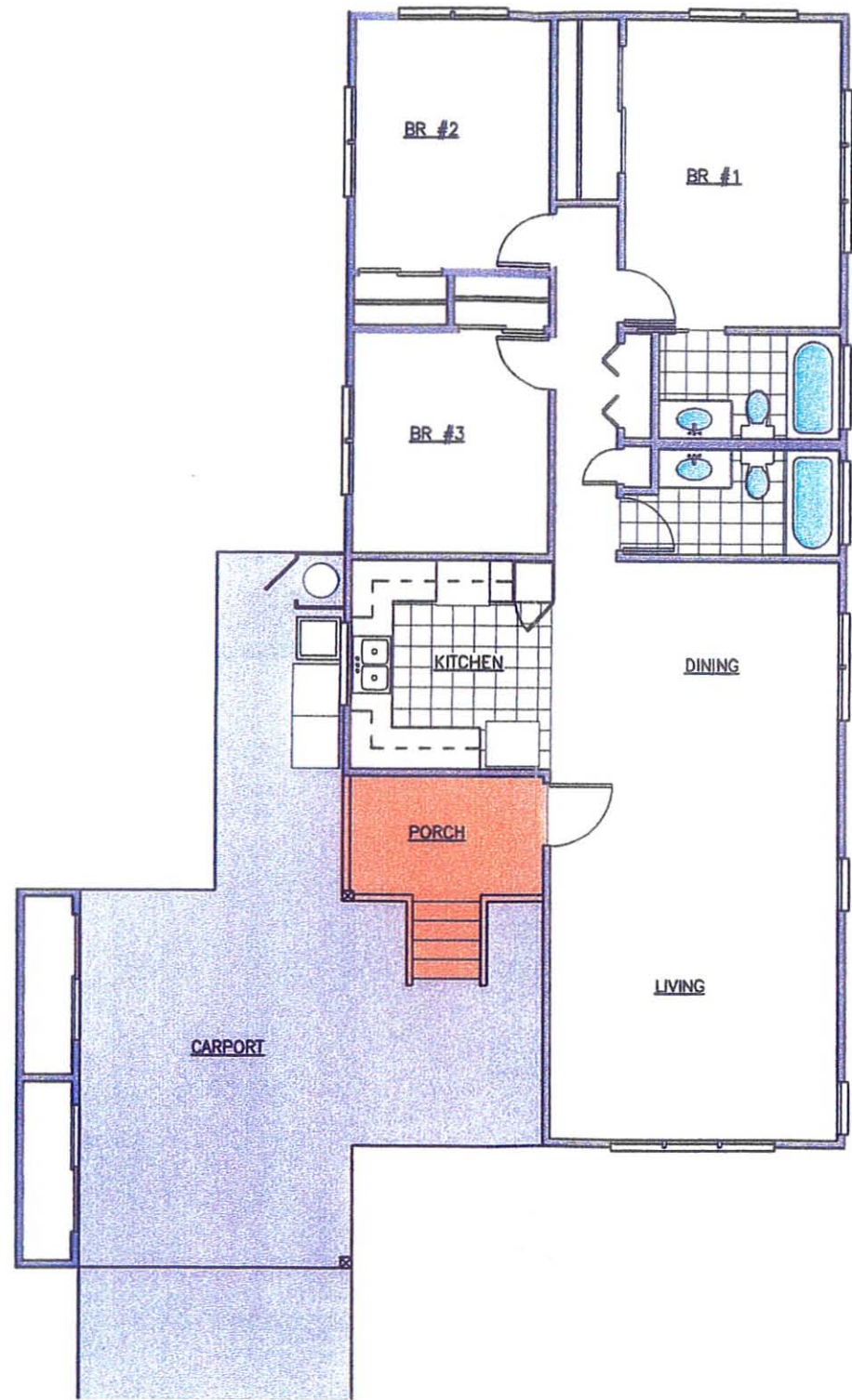
Pacific Architects, Inc.
 2020 South King Street
 Honolulu, Hawaii 96826
 808-535-1601
 Fax: 808-542-0054



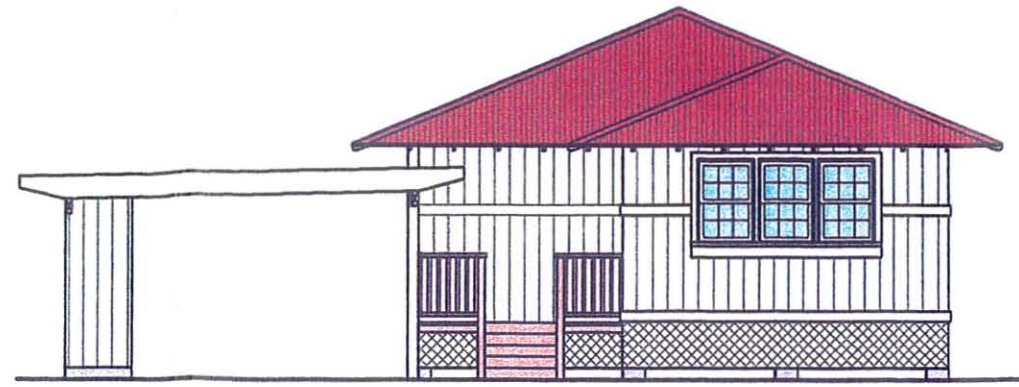
LANA' AFFORDABLE HOUSING PROJECT

SINGLE FAMILY MODEL 'B'

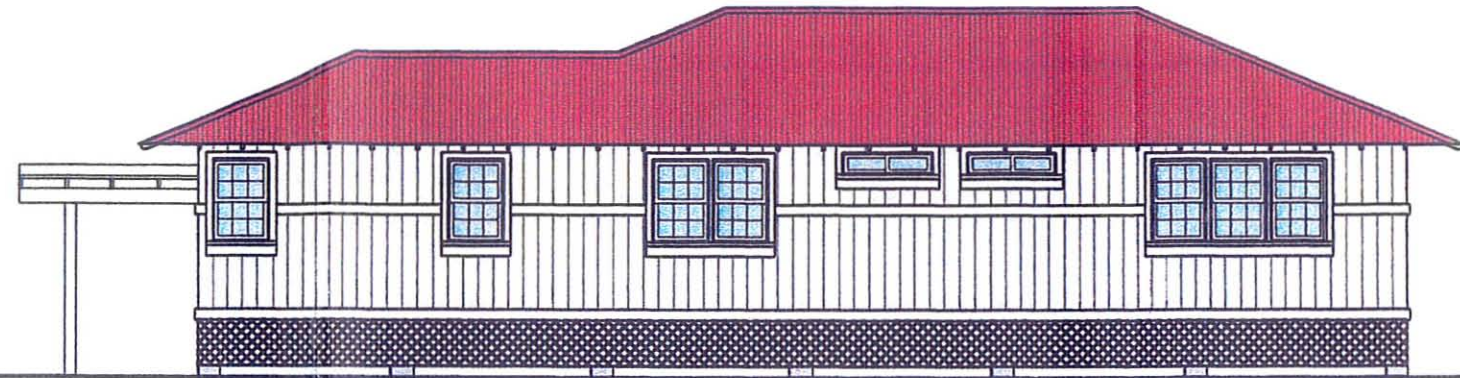
DATE: 01-30-09



FLOOR PLAN - MODEL 'C'



FRONT ELEVATION



RIGHT ELEVATION



REAR ELEVATION



LEFT ELEVATION



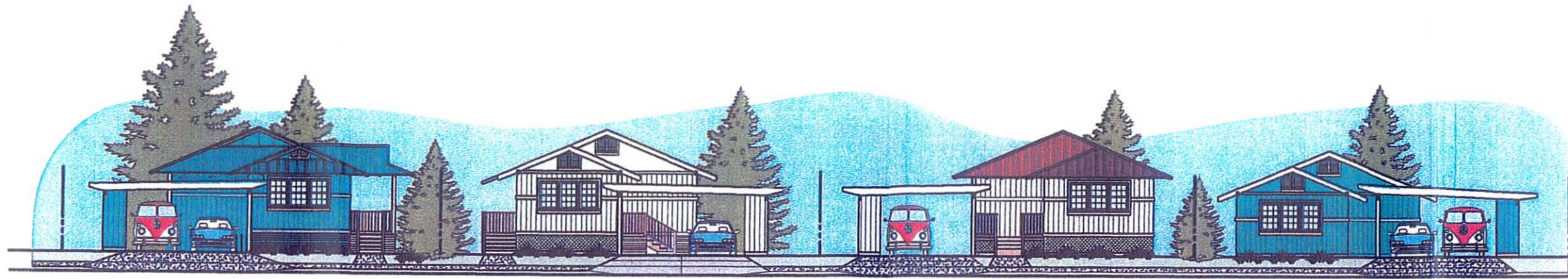
Pacific Architects, Inc.
 2020 South King Street
 Suite 345 - 101
 Seattle, WA 98148
 fax: 206-462-0054



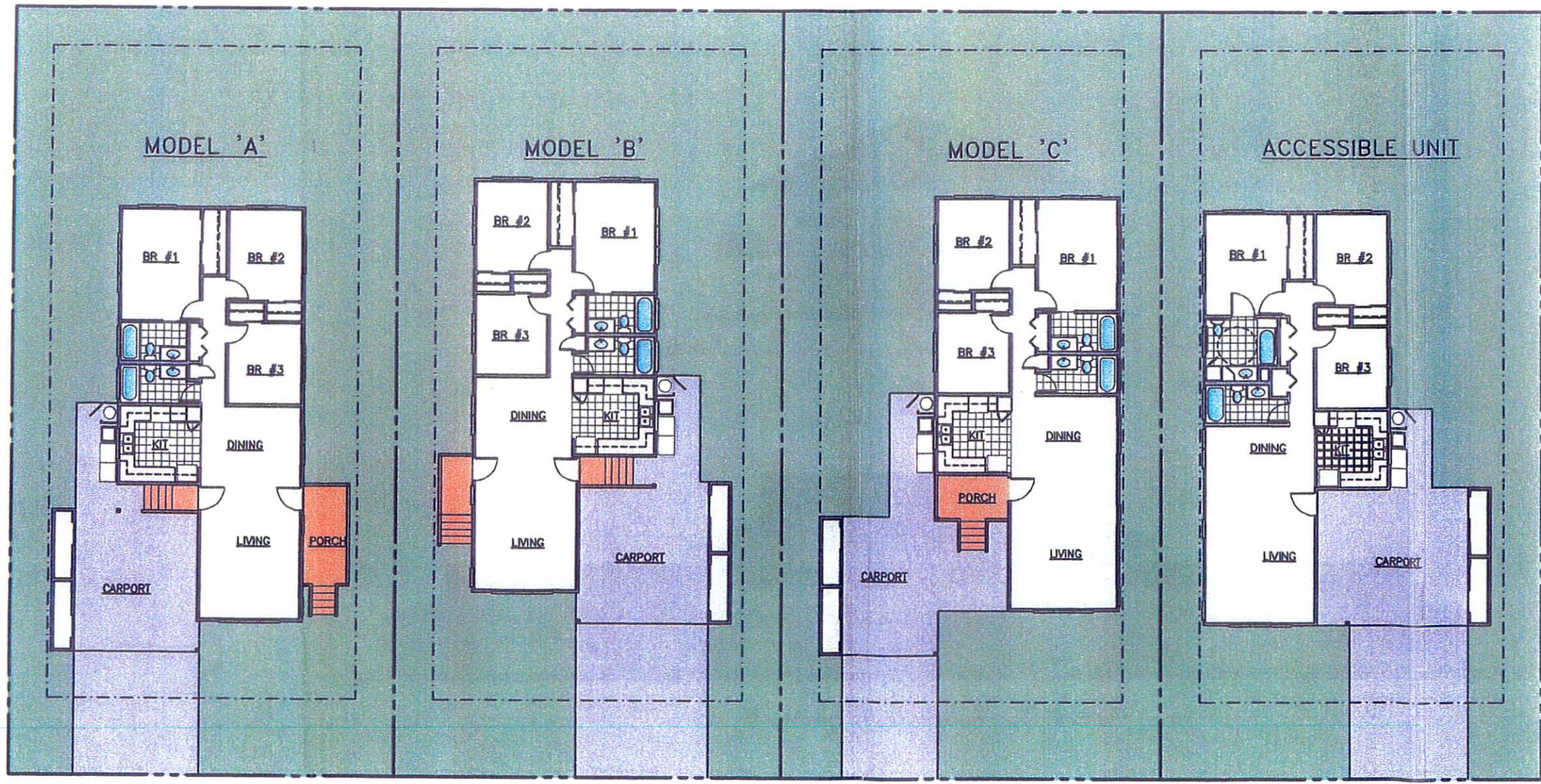
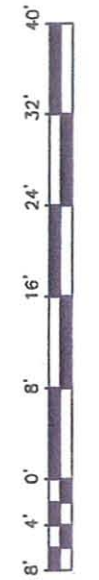
LANAI AFFORDABLE HOUSING PROJECT

SINGLE FAMILY MODEL 'C'

DATE: 01-30-09



MODEL 'A' MODEL 'B' MODEL 'C' ACCESSIBLE UNIT
 TYPICAL STREET SCENE



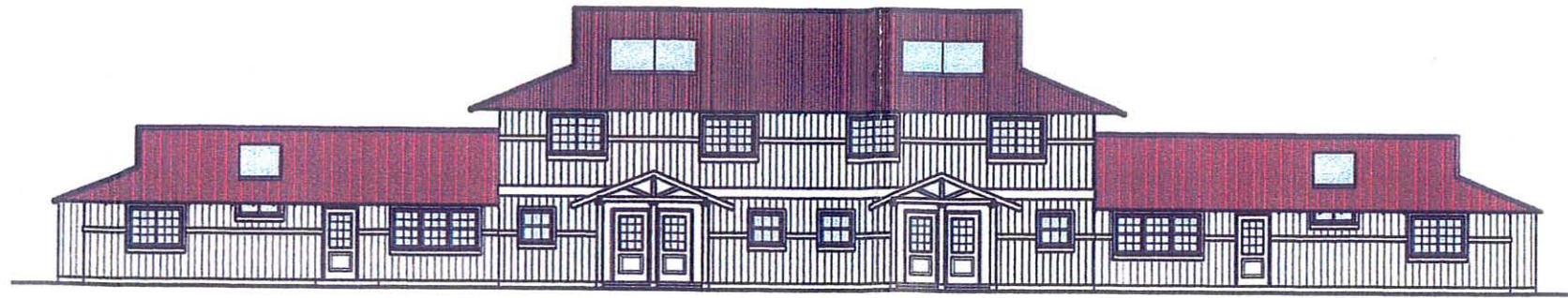
TYPICAL MODEL UNITS

Pacific Architects, Inc.
 2020 South King Street
 Honolulu, Hawaii 96826
 808-349-1801
 fax 808-942-0064

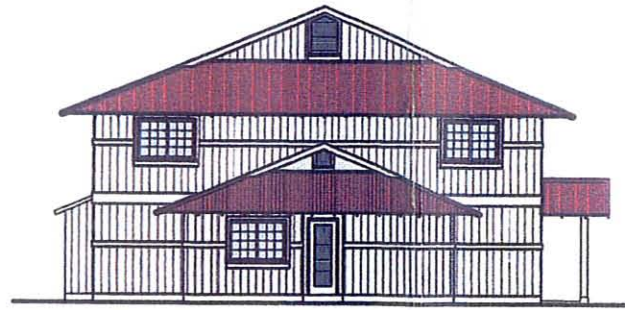


LANAI AFFORDABLE HOUSING PROJECT

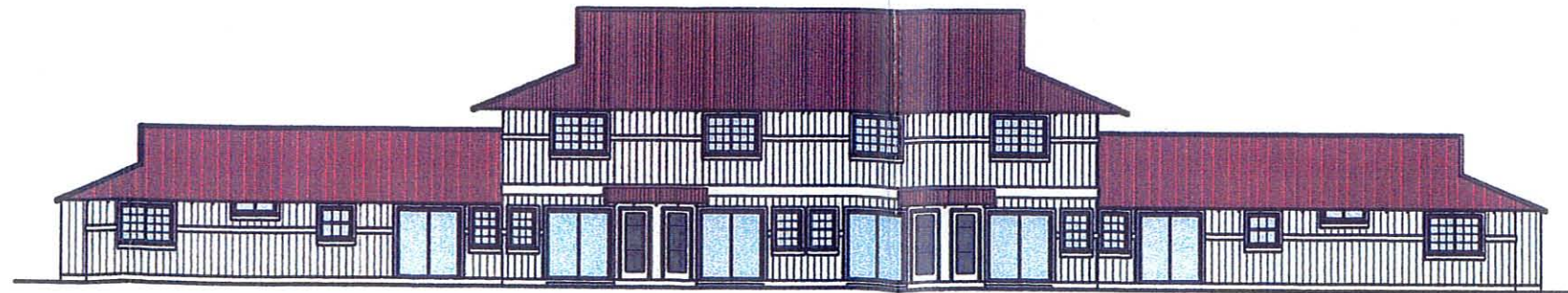
TYPICAL MODEL UNITS



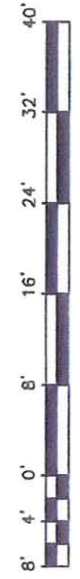
FRONT ELEVATION



TYPICAL SIDE ELEVATION



REAR ELEVATION



Pacific Architects, Inc.
2020 South King Street
Honolulu, Hawaii 96826
808-946-7601
Fax: 808-942-0064



LANA'I AFFORDABLE HOUSING PROJECT

MULTI-FAMILY TYPE 'A'