

JOSH GREEN, M.D.
GOVERNOR | KE KIA'ĀINA

SYLVIA LUKE
LIEUTENANT GOVERNOR
KA HOPE KIA'ĀINA KŪ WĀ



STATE OF HAWAII | KA MOKU'ĀINA 'O HAWAII'
DEPARTMENT OF LAND AND NATURAL RESOURCES
KA 'OIHANA KUMUWAIWAI 'ĀINA
Office of Conservation and Coastal Lands
P.O. BOX 621
HONOLULU, HAWAII 96809

DAWN N.S. CHANG
CHAIRPERSON
BOARD OF LAND AND NATURAL RESOURCES
COMMISSION ON WATER RESOURCE
MANAGEMENT
RYAN K.P. KANAKA'OLE
FIRST DEPUTY
CIARA W.K. KAHAHANE
DEPUTY DIRECTOR - WATER
AQUATIC RESOURCES
BOATING AND OCEAN RECREATION
BUREAU OF CONVEYANCES
COMMISSION ON WATER RESOURCE
MANAGEMENT
CONSERVATION AND COASTAL LANDS
CONSERVATION AND RESOURCES ENFORCEMENT
ENGINEERING
FORESTRY AND WILDLIFE
HISTORIC PRESERVATION
KAHOOLAWE ISLAND RESERVE COMMISSION
LAND
STATE PARKS

REF:OCCL:RL

Mark Kawika McKeague
Group 70 International, Inc
111 S.King Street, Suite 170
Honolulu, HI 96813



COR: HA 26-164
05/13/2026

SUBJECT: Draft EIS for a Proposed Land Use Amendment Located at Kauaea, Puna, Hawai'i; Tax Map Key (TMK): (3) 1-3-009: 005

Dear Mark Kawaika McKeague:

The Office of Conservation and Coastal Lands (OCCL) has reviewed the draft EIS for the petition by Sanford's Service Center & Kamehameha Schools to change the subject parcel from the Conservation District to the Agricultural District.

As stated in our earlier correspondence HA 25-121 attached, OCCL would like to see the EIS more fully explained why the applicant feels that the objective is no longer applicable to the parcel in question. The draft EIS states comments were received from the department, however, comments were not included in the appendix.

On March 17, 2025, the Hawai'i Department of Agriculture (HDOA) collected cinder samples from Sanford's Service Center for annual Rapid 'Ōhi'a Death (ROD) testing. On March 27, 2025, Hawai'i HDOA notified Sanford's Service Center that all samples tested negative for the presence of ROD pathogens. Please provide HDOA test results in the appendix.

Should you have any questions regarding this correspondence, please contact Raymond Lei of the Office of Conservation and Coastal Lands at (808) 587-0373 or raymond.lei@hawaii.gov.

Sincerely,

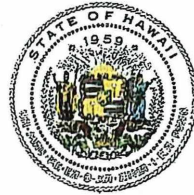
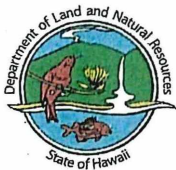
S Michael Cain

S. Michael Cain, Administrator
Office of Conservation and Coastal Lands

CC: *Hawaii District Land Office*
Land Use Commission
Division of Forestry and Wildlife
County of Hawaii Planning Department

JOSH GREEN, M.D.
GOVERNOR | KE KIA'ĀINA

SYLVIA LUKE
LIEUTENANT GOVERNOR | KA HOPE KIA'ĀINA



STATE OF HAWAII | KA MOKU'ĀINA 'O HAWAII'
DEPARTMENT OF LAND AND NATURAL RESOURCES
KA 'OIHANA KUMUWAIWAI 'ĀINA
Office of Conservation and Coastal Lands
P.O. BOX 621
HONOLULU, HAWAII 96809

DAWN N.S. CHANG
CHAIRPERSON
BOARD OF LAND AND NATURAL RESOURCES
COMMISSION ON WATER RESOURCE
MANAGEMENT
RYAN K.P. KANAKA'OLE
FIRST DEPUTY
CIARA W.K. KAHAHANE
DEPUTY DIRECTOR - WATER
AQUATIC RESOURCES
BOATING AND OCEAN RECREATION
BUREAU OF CONVEYANCES
COMMISSION ON WATER RESOURCE
MANAGEMENT
CONSERVATION AND COASTAL LANDS
CONSERVATION AND RESOURCES
ENFORCEMENT
ENGINEERING
FORESTRY AND WILDLIFE
HISTORIC PRESERVATION
KAHOOLAWE ISLAND RESERVE COMMISSION
LAND
STATE PARKS

REF: OCCL: KS

COR: HA 25-121

MEMORANDUM

Jan 31, 2025

TO: Group 70 International, Inc.

THROUGH: Russell Y. Tsuji, Land Administrator
Land Division, DLNR

FROM: Michael Cain, Administrator *S Michael Cain*
Office of Conservation and Coastal Lands, DLNR

SUBJECT: Second Environmental Impact Statement Preparation Notice (EISPN)
for Sanford's Service Center Leilani Quarry
Located at 15-2628 Keaau-Pahoa Road
Por. Keahiala & Kauaea, Puna, Island of Hawaii
Tax Map Key (TMK): (3) 1-3-009:005

The Office of Conservation and Coastal Lands (OCCL) has received Land Division's memo regarding the second EISPN regarding Sanford's Service Center Leilani Quarry. According to the information provided, Sanford's Service Center, in coordination with Kamehameha Schools, is preparing an Environmental Impact Statement (EIS) for the Leilani Quarry and is petitioning the State of Hawaii Land Use Commission (LUC) to pull 94.107-acres of the 694.5-acre parcel from the Limited Subzone of the State Land Use Conservation District to the State Land Use Agricultural District. See **Exhibit 1**.

Sanford's Service Center, at Leilani Quarry, produces a low-density type of black-colored cinder that is highly valued by the local horticultural and nursery industry. The proposed action will allow the expansion of cinder mining and quarrying activities within approximately 73 acres of the petition area, subject to the granting of a Special Permit by the LUC. See **Exhibit 2**.

According to our records, the Board of Land and Natural Resources (Board) approved Conservation District Use Permit (CDUP) HA-1957 on February 27, 1987, for an initial 15-acres of commercial cinder removal (Increment I) and approximately 1000-ft (length) road subject to sixteen conditions. On January 26, 1990, the Board approved an amendment to CDUP HA-1957 to expand the existing commercial cinder removal another 15-acres (Increment II), for a total of 30-acres, subject to 21 conditions. On April 4, 2008, the Chairperson approved the continuation to mine cinder and cinder soil.

The OCCL submitted comments on August 20, 2019, for the initial EISPN published on July 23, 2019, that are still valid. See **Exhibit 3**.

The permits previously approved were issued under a previous version of the rules and can be considered “non-conforming”. A new or expanded quarry does not appear to be an identified land use under the current Hawaii Administrative Rules (HAR) 13-5.

HAR § 13-5 states that the objective of the Limited Subzone is *to limit uses where natural conditions suggest constraint on human activities*.

The OCCL would like to see the draft EIS document explain why the applicant feels this purpose is no longer applicable.

Should there be any questions regarding this memorandum, please contact Kariann Stark of our Office of Conservation and Coastal Lands at (808) 587-0380.

C: HDLO
DOFAW
LUC
County of Hawaii-Planning

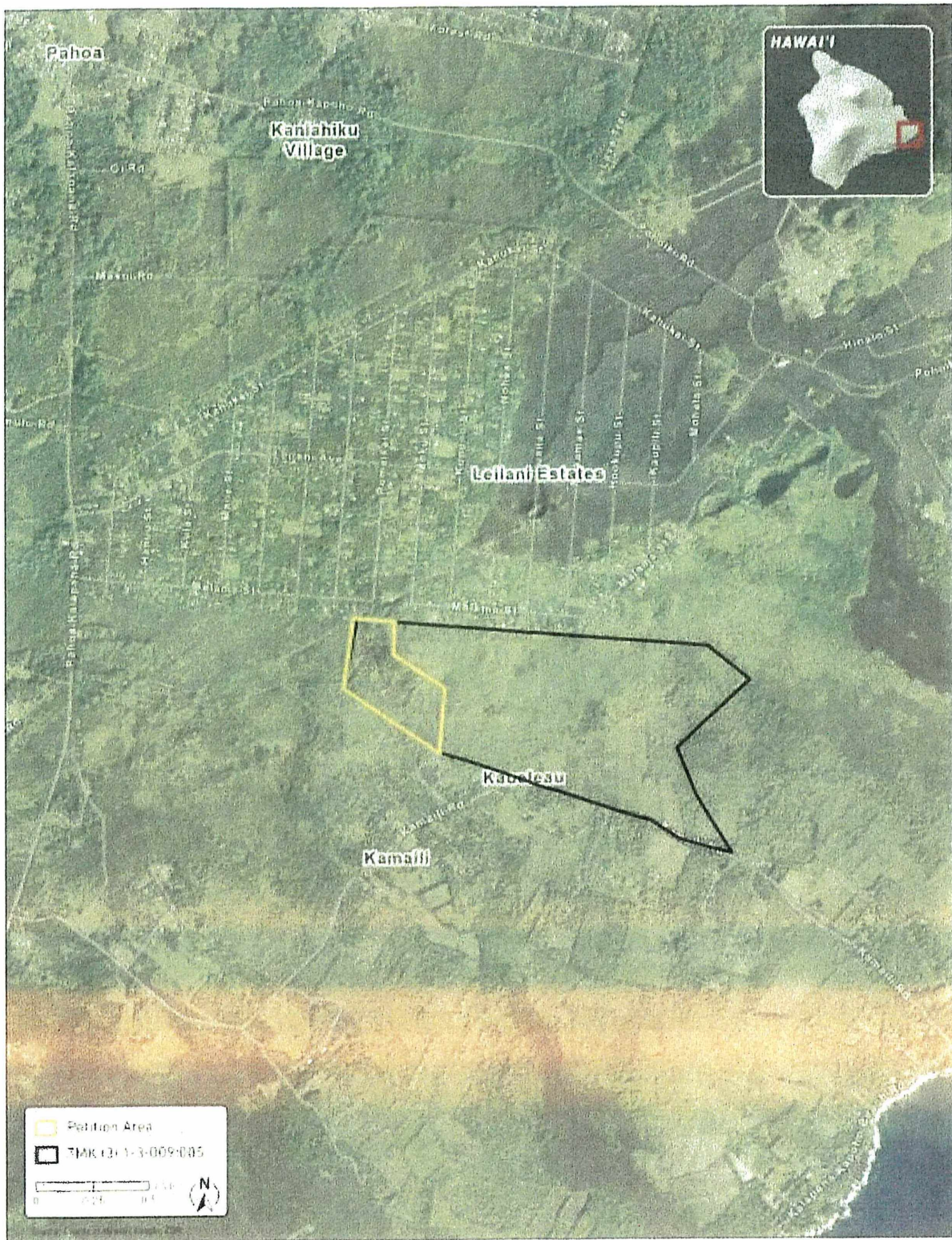


Exhibit 1



Exhibit 2

DAVID V. TOR
GOVERNOR OF
HAWAII



STATE OF HAWAII
DEPARTMENT OF LAND AND NATURAL RESOURCES
OFFICE OF CONSERVATION AND COASTAL LANDS
POST OFFICE BOX 621
HONOLULU, HAWAII 96809

SUZANNE D. CASE
DIRECTOR
OFFICE OF LAND AND NATURAL RESOURCES
CONSERVATION AND COASTAL LANDS
ROBERT E. MASUDA
DEPUTY DIRECTOR
M. RAJEO MANTEI
DEPUTY DIRECTOR - WATER
ASSISTANT DIRECTOR
DEPARTMENT OF LAND AND NATURAL RESOURCES
CONSERVATION AND COASTAL LANDS
CONSERVATION AND COASTAL LANDS
CONSERVATION AND COASTAL LANDS
CONSERVATION AND COASTAL LANDS
CONSERVATION AND COASTAL LANDS
CONSERVATION AND COASTAL LANDS
STATE TARIKA

REF:OCCL:TM

Correspondence: HA 20-22

MEMORANDUM

To: Russ Tsuji, Administrator
Land Division

From: Sam Lemmo, Administrator
Office of Conservation and Coastal Lands

AUG 20 2019

SUBJECT: Environmental Impact Statement Preparation Notice to Amend State Land Use District Boundaries from the Conservation State Land Use District to the Agricultural State Land Use District Located at Kauaca, Puna, Hawai'i, TMK: (3) 1-3-009:005

The Office of Conservation and Coastal Lands has reviewed the subject matter. According to the information presented Sanford's Service Center, Inc., in coordination with the property owner, the Kamehameha Schools is seeking to amend approximately 94-acres of a 694.5-acre parcel from the State Land Use Conservation District, Limited subzone to the State Land Use Agricultural District.

There appears to be incorrect statements pertaining to authorizations granted within the Conservation District. On **February 27, 1987** The Board of Land and Natural Resources (Board) approved Conservation District Use Permit (CDUP) HA-1957 for an initial 15-acres of Commercial Cinder Removal [Increment I] and an approximately 1000-ft (length) road subject to sixteen terms and conditions. On January 26, 1990, the Board approved an amendment to CDUP HA-1957 to expand the existing Commercial Cinder Removal another 15-acres [Increment II] subject to 21 terms and conditions. On April 4, 2008, the **Chairperson** approved the continuation to mine cinder and cinder soil from Increment I and II subject to CDUP HA-1957; CDUP HA-1957A; and 13 terms and conditions.

As the subject area lies within the Conservation District, we have attached each permit and request that compliance with the conditions of the permits be addressed in the draft EIS.

The OCCL notes that the USGS triangulation station and the summit of Pu'u Kali'u will not be 'jeopardized' and that this will be presented in the draft EIS and discussed in the Cultural Impact Assessment in further detail. The OCCL also notes the summit of Pu'u Kali'u may be suitable nesting habitat for the endangered/threatened 'Ua'u, 'A'o, and Band-rumped Storm-Petrel.

Exhibit 3

EISPN MEMO

Correspondence: HA 20-22

In addition, Hawaiian fauna [Ope'ape'a, I'o, Hawaii'i Amakihi, Apanane] and several types of endemic, indigenous and native flora in the area will also be discussed in the draft EIS. The OCCL further notes, the rejuvenation of native plants of the area after the lava eruption should also be discussed in the draft EIS.

Due to the presence of 'Ohia, the OCCL requests that Rapid Ohia Death be discussed. As the subject vicinity appears to be the initial location and ground zero for the disease, what mitigation is in place to insure the distribution of the mined cinders does not spread the ROD disease?

The OCCL would like to review the draft EIS document upon completion. Should there be any questions regarding this memorandum, contact Tiger Mills of our Office at (808) 587-0382.

C: HDLO/DOFAW
LUC
County of Hawaii'i
-Planning