



EXHIBIT 3

April 15, 2026

Notification of Petition Filing

This is to advise you that a petition to amend the State Land Use District Boundaries with the following general information has been submitted to the State of Hawai'i Land Use Commission ("**Commission**") pursuant to section 15-15-50(d) of the Hawaii Administrative Rules:

Docket No.: A26-812

Petitioner/ LĀNA'Ī RESORTS, LLC dba Pūlama Lāna'ī

Address: 733 Bishop Street, Suite 1500, Honolulu, Hawai'i 96813

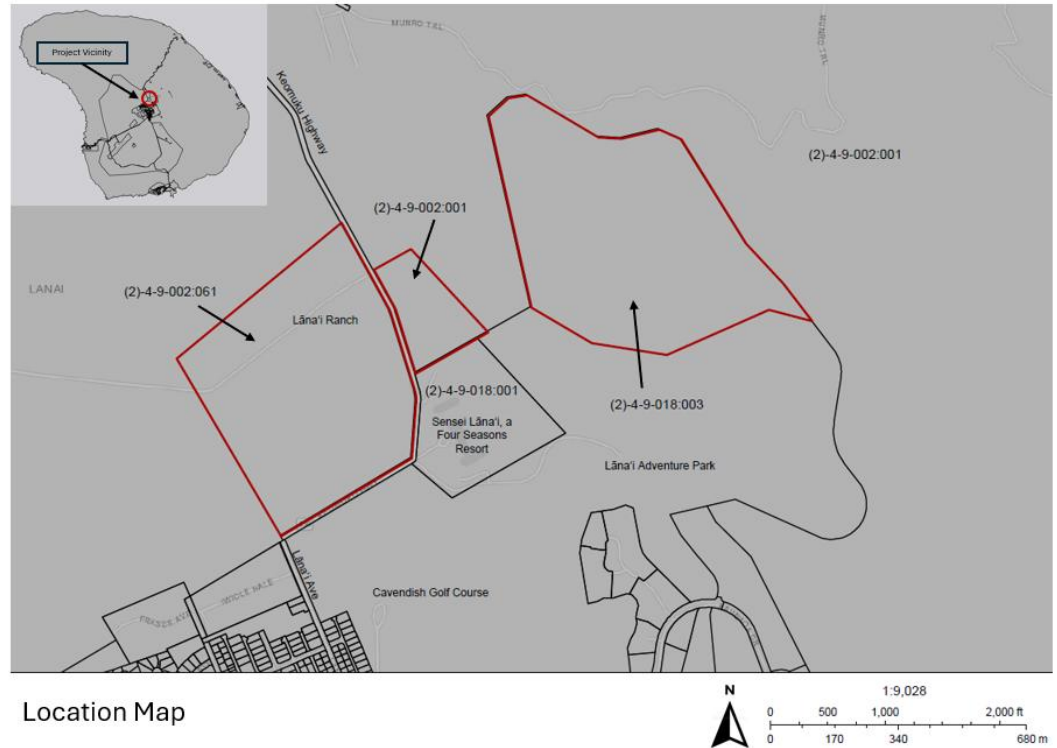
Landowner: LĀNA'Ī RESORTS, LLC dba Pūlama Lāna'ī

Tax Map Key No.: (2) 4-9-018:003 (por)
(2) 4-9-002:061 (por)
(2) 4-9-002:001 (por)

Location: Lāna'ī City, Island of Lāna'ī,
County of Maui, State of Hawai'i

**Requested
Reclassification:** Agricultural to Urban
Rural to Urban

Total Acreage: 170.225 acres



Location Map

Proposed Uses: The Petition seeks to amend approximately 95.844 acres from the State Agricultural District and approximately 74.381 acres from the State Rural District to the State Urban District. The requested reclassification is intended to align the State Land Use District designation with the applicable Community Plan, existing resort-related and ranch uses, and proposed County zoning and Kō'ele Project District updates, and to facilitate continued and future development consistent with the planned use of the area.

You may review detailed information regarding the petition and maps on file on the Commission's website at www.luc.hawaii.gov or at the Commission office from 8:00 a.m. to 4:00 p.m. (except legal holidays), Monday through Friday, subject to the requirements for entrance to State facilities. The Commission office is located at 235 South Beretania Street, Room 406, Honolulu, Hawai'i 96813.

If you are interested in participating in the hearing by presenting testimony, orally or in writing, please contact the Commission by phone at (808) 587-3822 or write to the Commission at P.O. Box 2359, Honolulu, Hawai'i 96804-2359 or dbedt.luc.web@hawaii.gov. For persons requesting special accommodations

EXHIBIT 3

due to disabilities, please contact the Commission at (808) 587-3822 or notify the Commission in writing at P.O. Box 2359, Honolulu, Hawai'i, 96804-2359, at least 10 days before the scheduled meeting.

Petitions to intervene are due thirty (30) days after the publication of this Notice of Petition Filing for Land Use District Boundary Amendment Petition, pursuant to section 15-15-52(b), Hawai'i Administrative Rules.