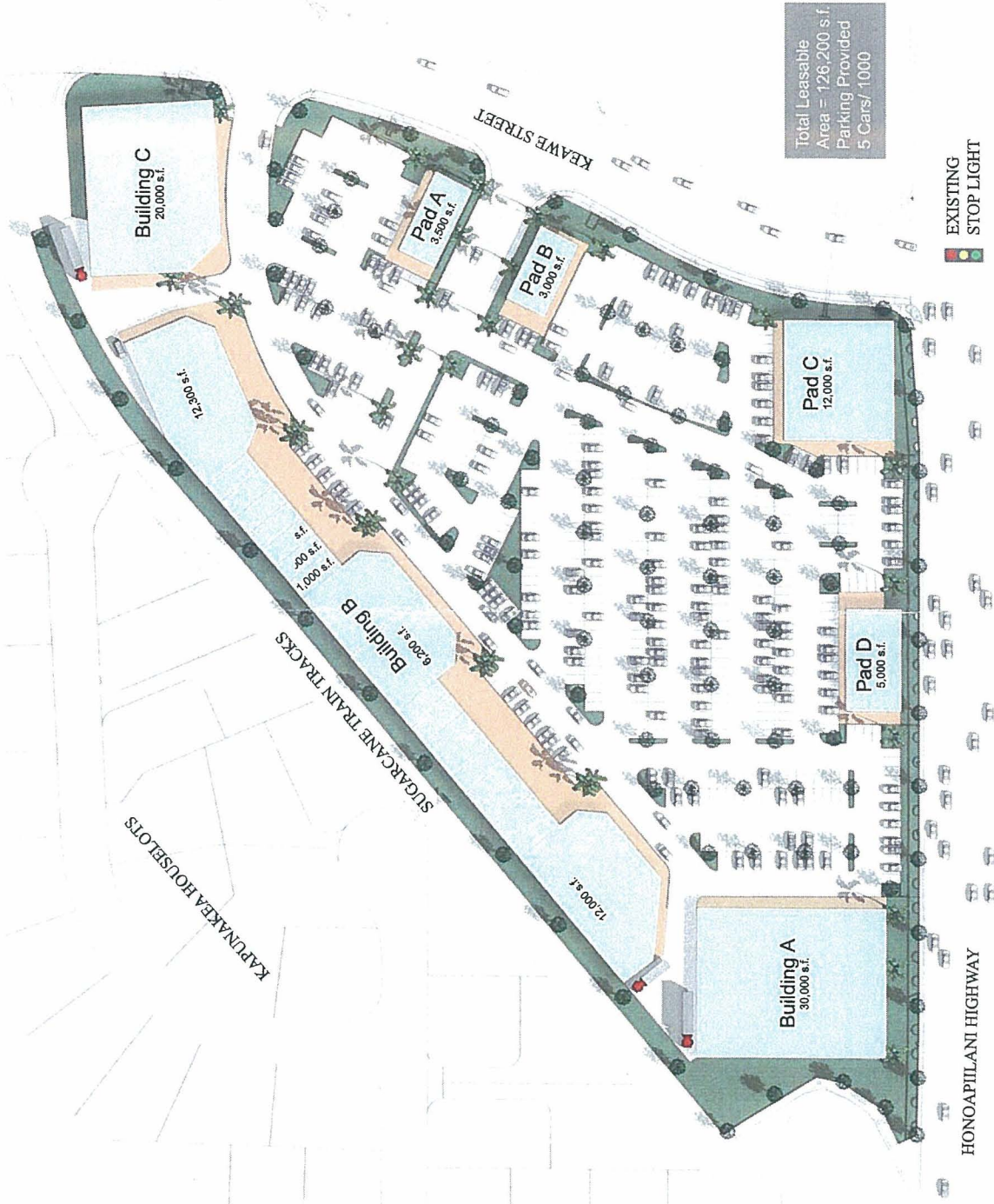


LAHAINA GATEWAY SITE PLAN



PRELIMINARY

**HAWAII OMORI
MAUKA SUBDIVISION**

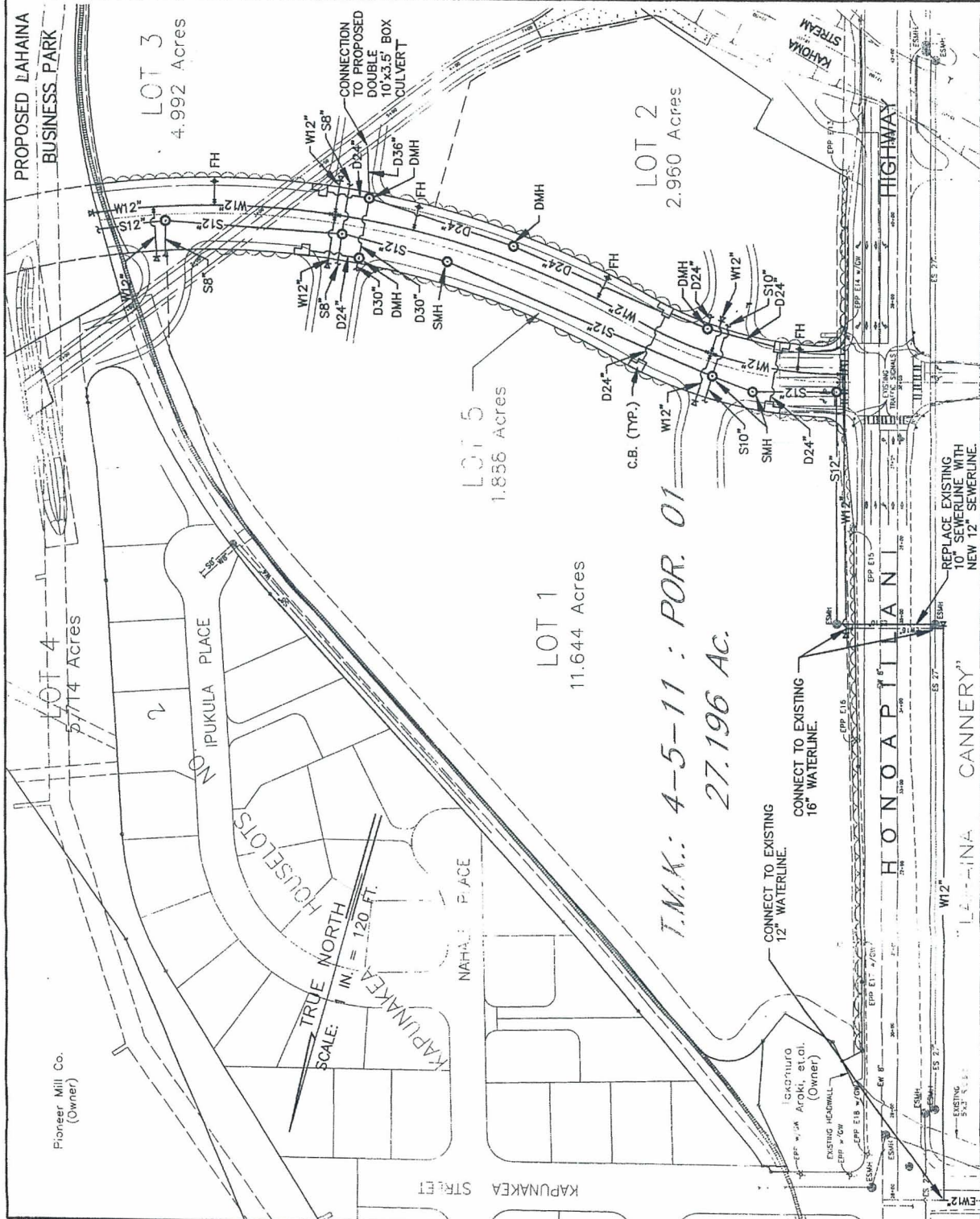
INFRASTRUCTURE
REQUIRED FOR
SERVICE TO HAWAII
OMORI DEVELOPMENT
AND LAHAINA
BUSINESS PARK.

SCALE: 1" = 120'

ADVANCE PRINT
Subject to Change
Date: 01/11/11



FIGURE C-3



*T.M.X.: 4-5-11 : POR. 01
27.196 AC.*

Pioneer Mill Co.
(Owner)

IGACHURO
AROKI, et al.
(Owner)

REPLACE EXISTING
10" SEWERLINE WITH
NEW 12" SEWERLINE.

TRUE NORTH
SCALE: 1" = 120 FT.