

EXHIBIT C

Moku O Waialua North Shore Plan



KAMEHAMEHA SCHOOLS

MOKU O WAIALUA

North Shore Plan

PA'ALA'A TO KĀPAELOA

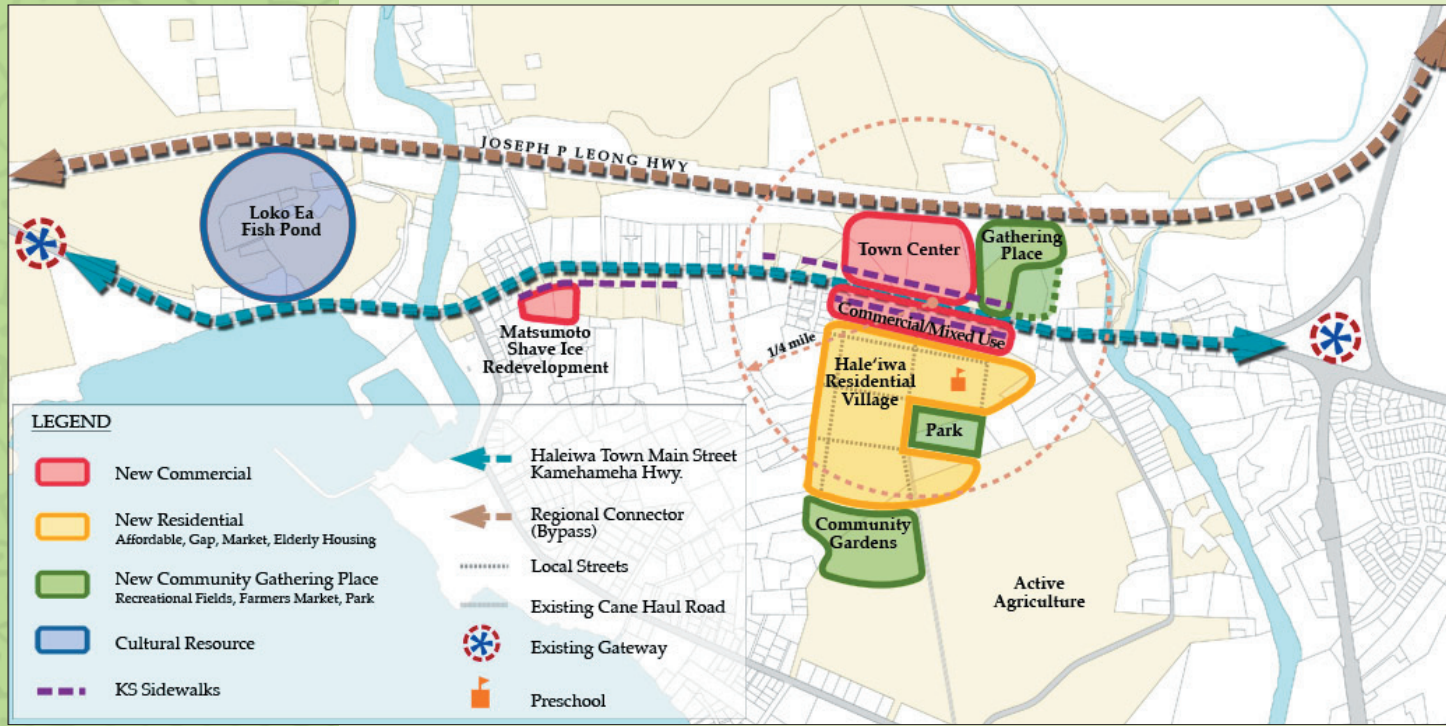
To align its land management with its values and Strategic Plan, KS began a planning process with the North Shore community.

Plan Vision Statement

KS implements sustainable land management practices on its North Shore lands that upholds traditional Hawaiian cultural values and knowledge to create a healthy community and abundance for future generations.

Plan Goals

- The legacy of Pa'ala'a-Kāpaelo is honored and supported by the Hawaiian and local community.
- Traditional cultural uses are practiced and linked to present activities and sustainability.
- Lands provide experiential educational opportunities for learners island-wide.
- Lands create income to support KS' mission.
- Ecosystem diversity is protected and enhanced.
- Agricultural lands are preserved and provide food and energy.
- A healthy and diverse community thrives and is supported by affordable housing, land access, native Hawaiian presence, sense of place, and economic strategies in alignment with community values.



Matsumoto Redevelopment



This project will renovate the historic storefronts and add a small amount of additional retail space, parking and sidewalks.

Town Center Commercial Development

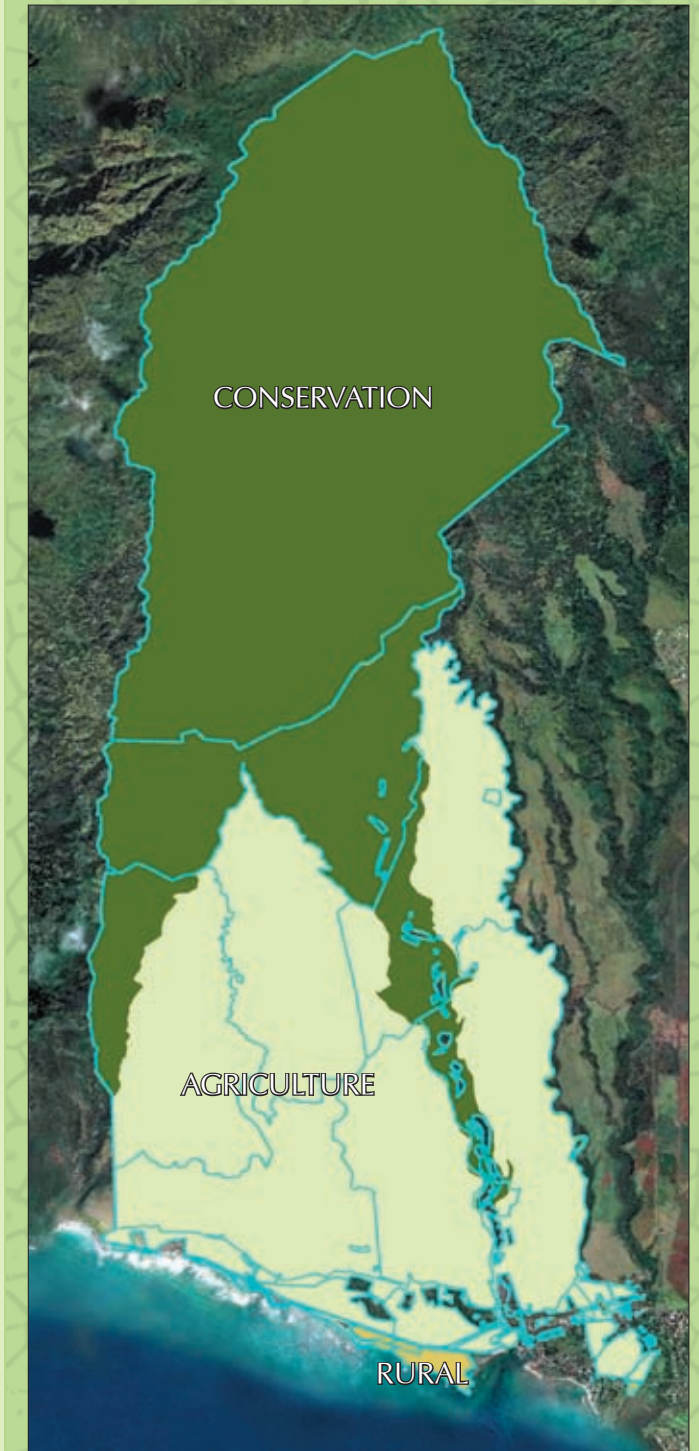


This project will create a plantation-style town center with stores serving local residents and an area for community gatherings.

Hale'iwa Residential Village and Outlying Residential



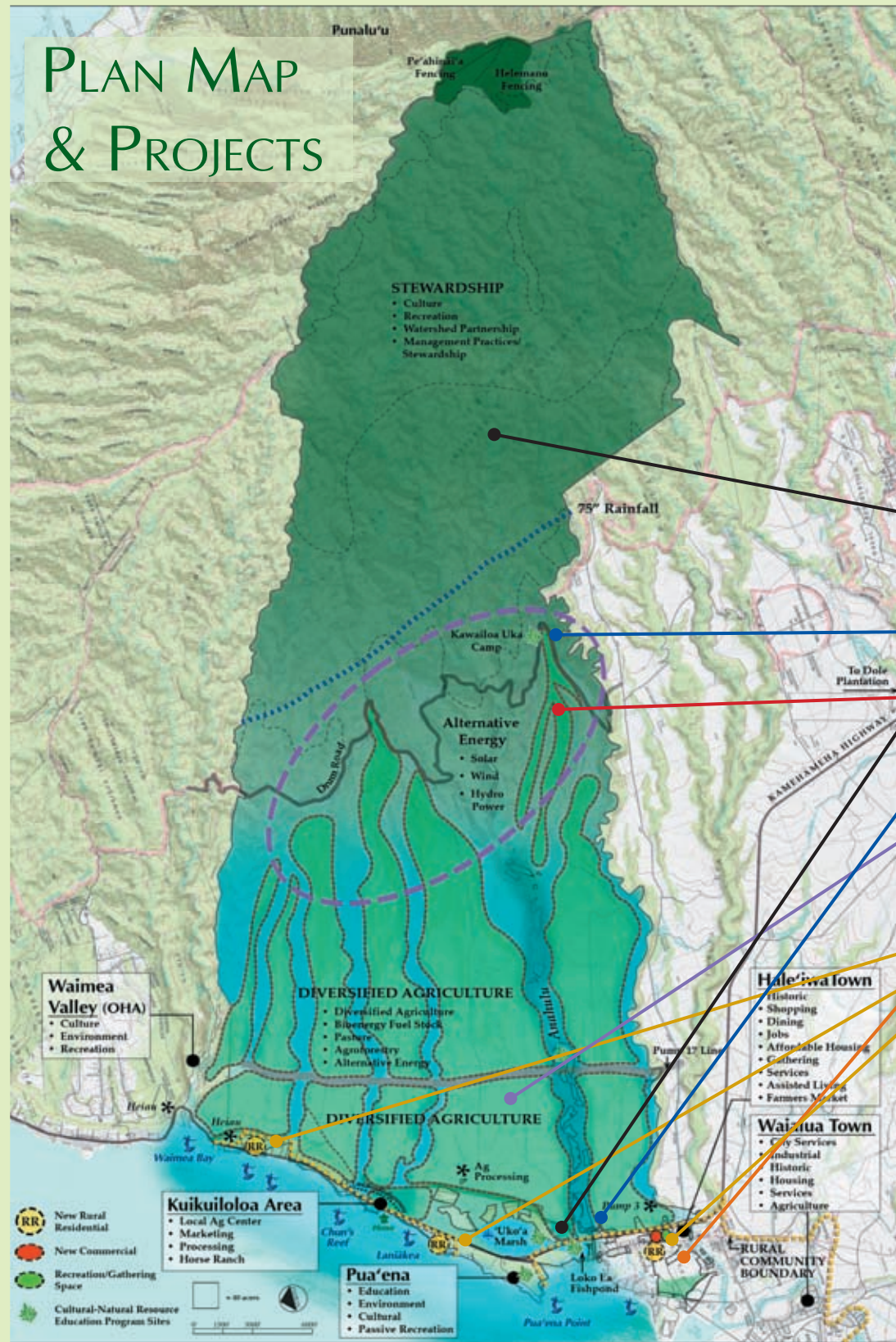
By accommodating population growth within the North Shore Sustainable Communities Plan Rural Community Boundary, this project strives to maintain the character of the North Shore while providing housing for residents. The housing areas are Hale'iwa Town, Pāpa'iloa and Kāpaelo (see map below).



Community Process

The community consultation began in 2006 with meetings with kūpuna to guide the process. The process continued with small group meetings, large community meetings, youth forums, mail survey, and a website. The process continues today with the implementation of the Plan projects on the next page.

PLAN MAP & PROJECTS



Loko Ea Fishpond Restoration



Through collaboration with a community group, the goal is to restore this culturally historic fishpond that once sustained Hawaiians on the North Shore.

Archaeology Field School



In partnership with University of Hawai'i, the Field School will help to identify, protect, and restore the wahi kūpuna of the North Shore while providing an educational opportunity for students.

Agricultural Water System Improvements



Improvements to the 100-year-old agricultural water system above the bluff will provide a more reliable water supply for diversified agricultural crops.

Increase natural and culture resource stewardship and management

Expand educational opportunities

Establish alternative energy uses

Enhance diversified agriculture & food production

Develop/redevelop rural commercial

Develop rural residential

Long Term Agricultural Leases



The increased water reliability from the water system improvements and other sources will enable KS to secure long-term leases with existing tenants and add new uses. An organic farm will be one of the new tenants.

Sustainability Institute



Grounded in a Hawaiian world view, the Institute would innovate, educate, research, and demonstrate sustainability on KS lands.



Alternative Energy Development



The winds and solar energy of the North Shore are promising for alternative energy production. KS plans to test the feasibility of potential wind energy generation in the near term.



Kamehameha Schools Contact Information

email: nsplan@ksbe.edu

Phone: (808) 523-6244 Fax: (808) 523-6374

Website: www.ksbe.edu/nsplan