

EXHIBIT D

Punalu'u Ahupua'a Plan

CULTURE

1. Undertake Priority Cultural Resources Studies*
2. Support the Sharing and Documentation of Nā Mo'olelo o Punalu'u
3. Establish Community Natural Resource Garden
4. Support Hawaiian Traditional and Cultural Practices

ENVIRONMENT

1. Develop a Stream Stewardship and Flood Mitigation Plan*
2. Secure Access to Kamehameha Schools' Punalu'u Ma Uka Lands*
3. Evaluate Sale of Plat 2 Residential Beach Lot Properties*
4. Implement Ma Uka Resource Stewardship
5. Implement Ma Kai Resource Stewardship

The plan should be a living document that will be revised, supplemented, and improved over time. Kamehameha Schools and the Land Assets Division is committed to working with the Punalu'u community towards the implementation of the plan and the realization of the vision for Punalu'u as an "Āina Momona".

For more information, please contact Land Asset Manager, Kawika Burgess, at (808) 534-8189.

PUNALU'U AHUPUA'A PLAN

"HE 'ĀINA MOMONA 'O PUNALU'U"

Vision:

Punalu'u is a place of abundance.

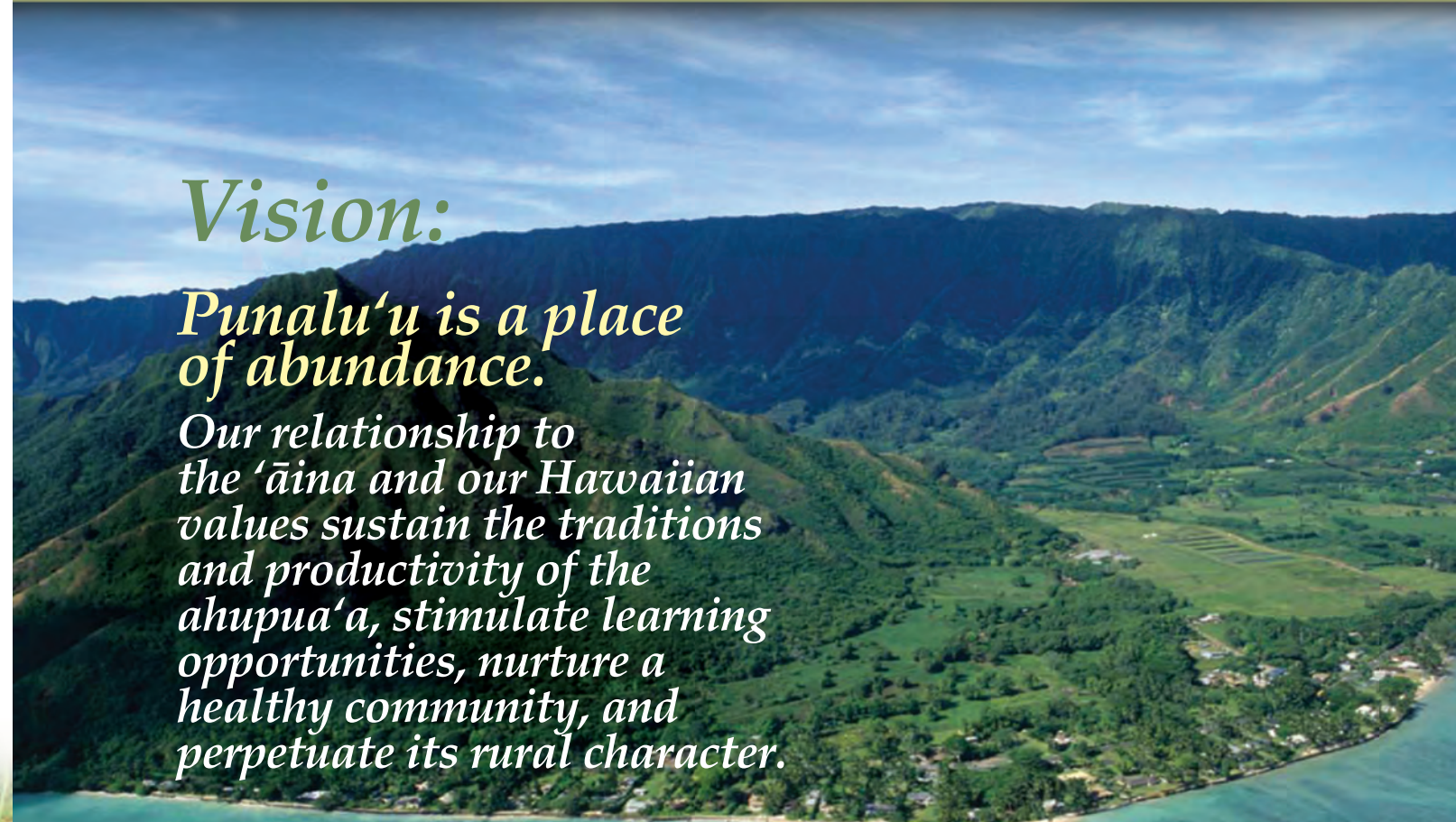
Our relationship to the 'āina and our Hawaiian values sustain the traditions and productivity of the ahupua'a, stimulate learning opportunities, nurture a healthy community, and perpetuate its rural character.

KAMEHAMEHA SCHOOLS' land holdings in the ahupua'a of Punalu'u total approximately 3,600 acres, making up nearly the entire ahupua'a. Since the early nineteenth century, the ahupua'a of Punalu'u has been leased to master lessees who used the land for diversified agriculture and sugar cane.

Kamehameha Schools' Punalu'u lands provide opportunity to contribute to all five values of the Land Assets Division (LAD) Integrated Management Strategy in very meaningful ways. Punalu'u currently hosts two cultural and educational programs and supports diversified agriculture. Kamehameha Schools is excited about the opportunities for building upon these resources as well as for guiding the direct management of the Punalu'u lands. Equally exciting is the opportunity to develop additional projects and programs with Kamehameha Schools assuming direct management of the lands in Punalu'u. Today there is a great

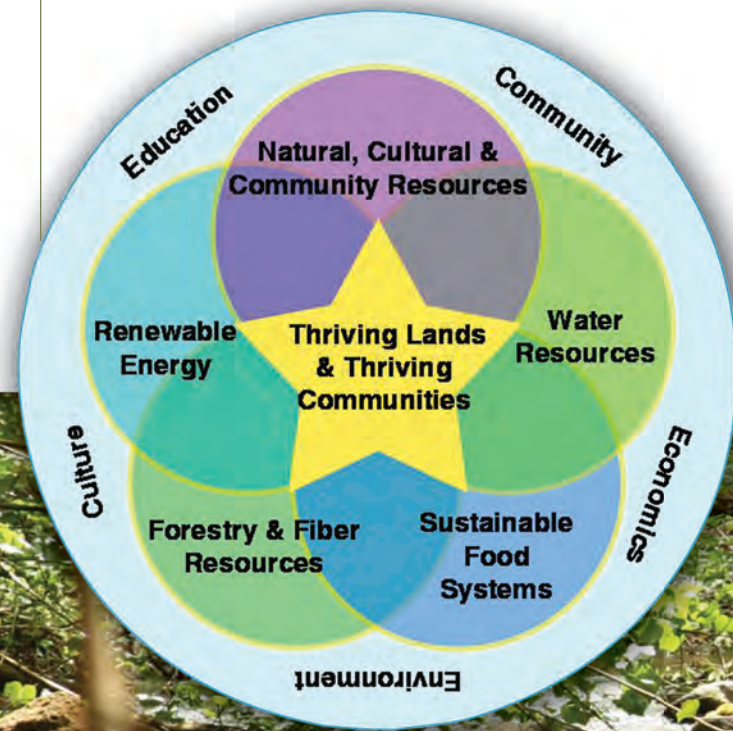
opportunity to build upon Punalu'u's existing resources, identify and develop additional projects and programs that will enhance the values inherent within the ahupua'a, and incorporate the ideas and aspirations of the community to provide a comprehensive plan and fulfill LAD's Vision of "Thriving Lands and Thriving Communities" in the ahupua'a of Punalu'u.

The Punalu'u Ahupua'a Plan provides guidance to Kamehameha Schools in its management and stewardship of these lands. The Plan provides strategies for managing agricultural, commercial, residential, and conservation assets and aligns future projects and programs with Kamehameha Schools' Strategic Plan Goals and Integrated Management Strategy. The Plan also identifies ways in which the Punalu'u community can be active partners and participants in the balanced management of this special ahupua'a.



The Punalu'u ahupua'a presents a unique opportunity for Kamehameha Schools, together with the community, to establish a model for sustainable agricultural, environmental and cultural programs.

Land Assets Division
Integrated Management Strategy



LONG-RANGE GOALS FOR PUNALU'U

These long range goals for Punalu'u align closely with the five values of LAD's Integrated Management Strategy. They include protection of:

- Natural Resources – Areas of intact native ecosystems are maintained and the cultural relationships among akua, kanaka, and 'āina are strengthened.
- Rural Character – Punalu'u is a community that maintains open space, natural systems, and healthy working landscapes
- Agriculture – Agricultural lands are responsibly utilized in a balanced manner to support sustainable small-scale commercial farming, programmatic farming, family farming, grazing, and other related activities, such as livestock and aquaculture production.
- Learning/Education – Diverse programs provide rich educational opportunities for learners of all ages.
- Hawaiian Values and Traditions – Punalu'u is recognized as a cultural landscape. Hawaiian values and traditions are the foundation that guides land use and program management within the ahupua'a.
- Community Capacity – The ahupua'a is a place where community-based programs designed to support Hawaiian values thrive.

The Punalu'u Conceptual Plan provides a graphic summary of the physical elements of the Punalu'u Ahupua'a Plan.



29 PROJECTS AND PROGRAMS

*Priority Project (projects identified for implementation over the next 3-5 years)

ECONOMICS/AGRICULTURE

1. Complete Renovation of the Agriculture Water System*
2. Develop and Implement an Overall Agriculture Production/Land Conservation Plan*
3. Establish Longer Term Agreements for Tenant Farmers and Program Partners*
4. Construct a Central Agricultural Baseyard Facility*
5. Develop a Traditional Farming Program
6. Develop an Organic Farming Program
7. Develop Agro-Forestry and Orchards
8. Provide an Agriculture Processing Complex
9. Provide On-Site Housing for Property Manager(s)
10. Develop a Farmer's Market

11. Develop a Farmer's Cooperative for Participation in Agricultural Land Management
12. Renovate Agricultural Residences

EDUCATION

1. Enhance and Maintain Punalu'u Retreat Facilities*
2. Provide Support to Nā Kamalei – KEEP*
3. Provide Support to UH-Mānoa Ka Papa Lo'i o Punalu'u*
4. Develop Natural Resources and Agriculture Programs*
5. Identify and Explore Opportunities for Kamehameha Schools Direct Service
6. Provide Overnight Accommodations in the Valley
7. Identify and Build New Collaborations
8. Collaborate with the Community to Establish a Punalu'u Ahupua'a Center

Continued on next page