

CADES SCHUTTE
A Limited Liability Law Partnership

CALVERT G. CHIPCHASE 7757
CHRISTOPHER T. GOODIN 8562
MOLLY A. OLDS 11330
Cades Schutte Building
1000 Bishop Street, Suite 1200
Honolulu, HI 96813-4212
Telephone: (808) 521-9200
Email: cchipchase@cades.com
cgoodin@cades.com
molds@cades.com

Attorneys for Petitioner
HONOIPU HIDEAWAY, LLC



BEFORE THE LAND USE COMMISSION
OF THE STATE OF HAWAII

In the Matter of the Petition of
HONOIPU HIDEAWAY, LLC

For Boundary Interpretation of certain
land consisting of approximately 17.5470
acres situated at 56-102 Old Coast Guard
Road, Tax Map Key No. (3) 5-6-001-074,
Kapaa-Upolu, North Kohala, County of
Hawaii, State of Hawaii.

DOCKET NO. DR21-73

**SECOND SUPPLEMENTAL
EXHIBIT LIST**

EXHIBITS 35-38

CERTIFICATE OF SERVICE

SECOND SUPPLEMENTAL EXHIBIT LIST

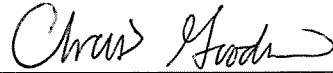
Honoipu Hideaway, LLC (“**Petitioner**”), a Hawai‘i limited liability company, respectfully submits this supplemental exhibit list. The supplemental list adds two sets of overlays. First, Exhibits 35 and 36 overlay the Tax Map Key (“**TMK**”) parcel boundaries over an excerpt and the full image of the 1969 Review Map of Agricultural Uses on Hawai‘i Island. Second, Exhibits 37 and 38 overlay the TMK parcel boundaries on an excerpt and the full image of the 1954 USGS Aerial. Exhibits 35 through 38 are attached to this exhibit list.

Ex.	Description
1.	Eckbo, Dean, Austin & Williams, State of Hawaii Land Use Regulations Review (1969)
2.	Land Use Commission Rules (1964)
3.	1964 LUC Map Certified
4.	1969 LUC Map Certified
5.	1974 LUC Map Certified
6.	Overlay Property with 300-ft Setback
7.	Overlay Map 300-ft Setback
8.	1982 USGS Map Overlay
9.	1954 Aerial Excerpt
10.	1954 Aerial
11.	1965 Aerial Excerpt
12.	1965 Aerial Original
13.	1982 USGS Certified Map
13A.	1957 USGS Certified Original
13B.	1982 USGS Certified Map
14.	Loran Station Info Book
15.	150 Kohalans Article

Ex.	Description
16.	1961 USCG Road Picture
17.	1961 USCG House Picture
18.	GIS Aerial Photo
19.	Corrected Boundary Survey
20.	Overlay New Road Current Line
21.	Application of Hawaiian Electric Company Inc.
22.	Stengle Declaratory Order
23.	Stengle Amendment
24.	Church Petition
25.	Linge v. Hawaii Government Employees Association AFSCME Local 152 AFL-CIO
26.	Civil Jury Instructions 3.3
27.	Waikiki Marketplace Investment Co. v. Chair of Zoning Board of Appeals of City and County of Honolulu
28.	Denning v. Maui County
29.	Nakamine v. Board of Trustees of Employees Retirement System
30.	Lucas v. South Carolina Coastal Council
31.	Penn Central Transportation Co. v. City of New York
32.	County Zoning Map
33.	Office Memorandum dated March 17, 1959
34.	U.S. Coast Guard Speed Letter dated September 18, 1959
35.	1969 Review Agricultural Uses Map TMK Overlay Excerpt
36.	1969 Review Agricultural Uses Map TMK Overlay
37.	1954 USGS Aerial Excerpt TMK Overlay
38.	1954 USGS Aerial TMK Overlay

DATED: Honolulu, Hawai'i, December 21, 2021.

CADES SCHUTTE
A Limited Liability Law Partnership

A handwritten signature in cursive script, appearing to read "Chris Goodin", is positioned above a horizontal line.

CALVERT G. CHIPCHASE
CHRISTOPHER T. GOODIN
MOLLY A. OLDS
Attorneys for Petitioner
HONOIPU HIDEAWAY, LLC

EXHIBIT 35



EXHIBIT 36

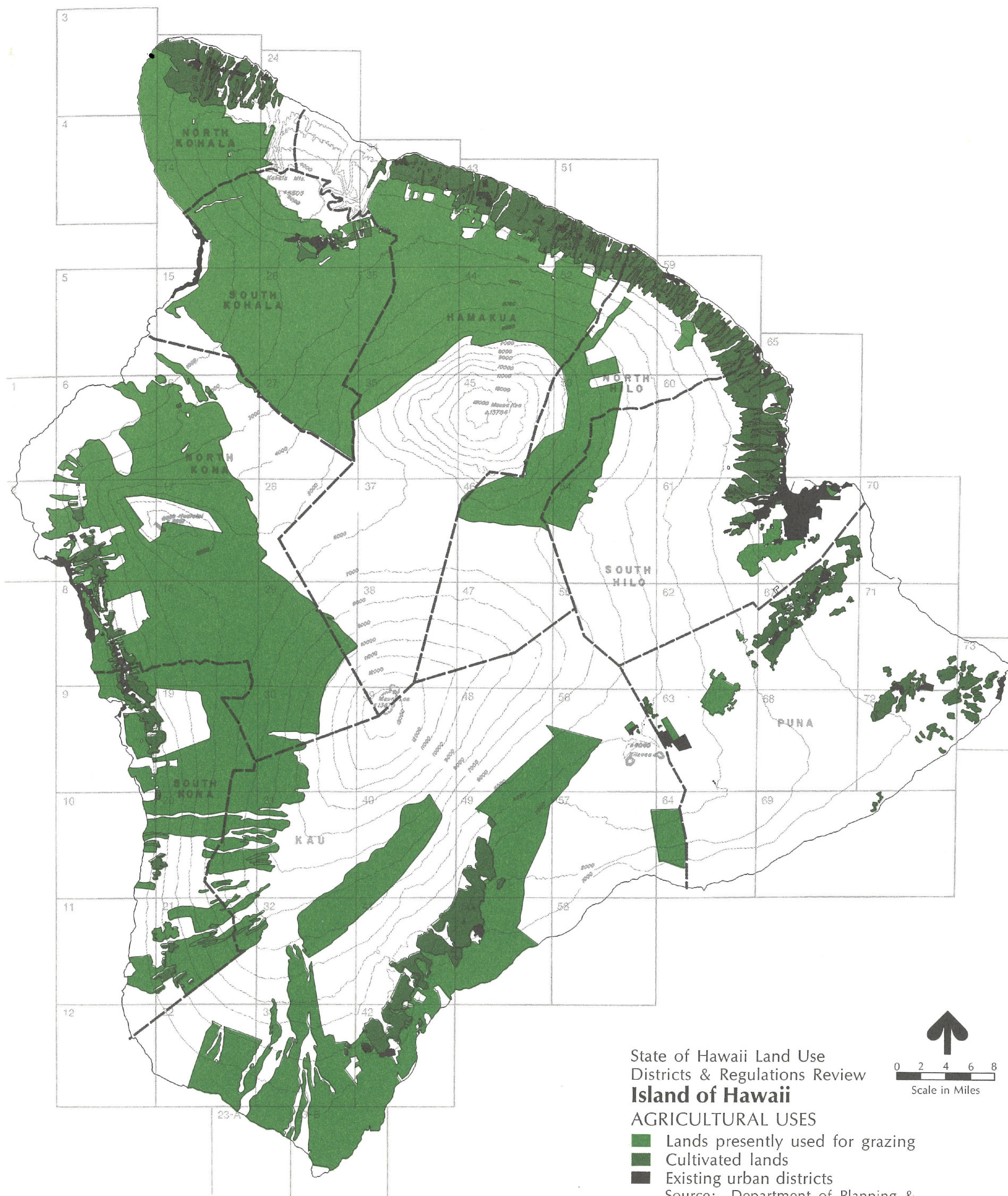


EXHIBIT 37



EXHIBIT 3

EXHIBIT 38

0112 21,000' 19°45' N 155°30' W H41
7-H23A 21 APRIL 54 2207Z 6"

EXHIBIT 4



BEFORE THE LAND USE COMMISSION
OF THE STATE OF HAWAII

In the Matter of the Petition of

HONOIPU HIDEAWAY, LLC

For Boundary Interpretation of certain
land consisting of approximately 17.5470
acres situated at 56-102 Old Coast Guard
Road, Tax Map Key No. (3) 5-6-001-074,
Kapaa-Upolu, North Kohala, County of
Hawaii, State of Hawaii.

DOCKET NO. DR21-73

CERTIFICATE OF SERVICE

CERTIFICATE OF SERVICE

The undersigned hereby certify that on this date, a copy of the foregoing document was duly served on the following persons at their last known address by depositing a copy in the U.S. mail, postage prepaid:

ELIZABETH A. STRANCE
Corporation Counsel
LAUREEN MARTIN
Deputy Corporation Counsel
Office of the Corporation Counsel
101 Aupuni Street, Suite 325
Hilo, HI 96720

Email: Laureen.Martin@hawaiicounty.gov

ZENDO KERN
County of Hawaii Planning Department
101 Pauahi Street, Suite 3
Hilo, HI 96720

Email: zendo.kern@hawaiicounty.gov

County of Hawaii and Planning Department

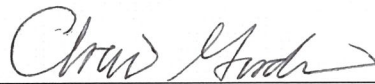
ALISON KATO
Deputy Attorney General
425 Queen Street
Honolulu, HI 96813
Email: alison.s.kato@hawaii.gov

MARY ALICE EVANS
Director
Office of Planning
P.O. Box 2359
Honolulu, HI 96804-2359
Email: maryalice.evans@hawaii.gov

*State of Hawaii and Office of Planning and Sustainable
Development*

DATED: Honolulu, Hawai'i, December 21, 2021.

CADES SCHUTTE
A Limited Liability Law Partnership



CALVERT G. CHIPCHASE
CHRISTOPHER T. GOODIN
MOLLY A. OLDS
Attorneys for Petitioner
HONOIPU HIDEAWAY, LLC