

SFO/49

HAWAIIAN CABLE VISION CORPORATION

December 15, 1967

Maui Planning Commission
P. O. Box 1487
Kahului, Maui

Attention: Mr. Robert Ohata, Director

Gentlemen:

At its meeting on December 15, 1967, the Land Use Commission voted to approve the grant of a special permit to the Hawaiian Cable Vision Corp. to construct, operate and maintain a Community Antenna Television (CATV) System consisting of a 1-story 12' x 12' television receiving and transmission station, and a 60' high steel tower in the vicinity of Launiupoko Stream, Lahaina, Maui, Hawaii, identifiable by Tax Map Key 4-7-01: portion of 2, on the condition that all of the buildings will be painted to blend in with the landscape and sufficient foliage will be planted to prevent the buildings from being conspicuous.

Enclosed for your information is the staff report.

Very truly yours,

RAMON DURAN
Executive Officer

Encl.

cc: Department of Taxation
Mr. Henry J. Geist, Haw'n Cable Vision Corp.

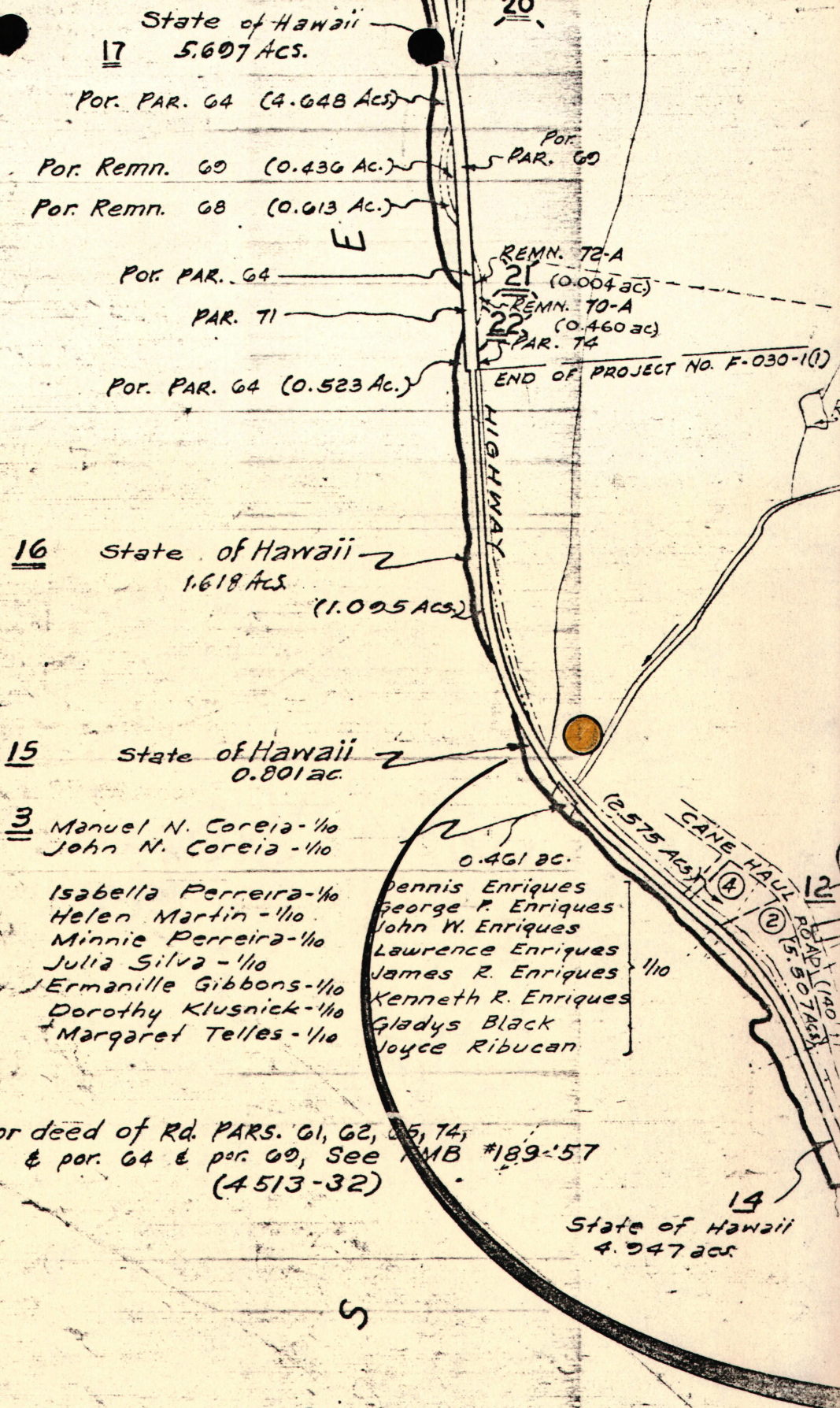
Dwg. No.: 2030

By: I.K.H. - May, 1934

Source: Tax Maps Bureau, Geo. F. Wright & U.S.G.S. Maps.

LAUNIUPOKO, LAHAINA, MAUI.

Note: For deed of Rd. PARS. 61, 62, 65, 74, & por. 64 & por. 69, See LMB #189-'57 (4513-32)



17 State of Hawaii
5.607 Ac.

Por. PAR. 64 (4.648 Ac.)

Por. Remn. 69 (0.436 Ac.)

Por. Remn. 68 (0.613 Ac.)

Por. PAR. 64

PAR. 71

Por. PAR. 64 (0.523 Ac.)

20

REMN. 72-A
21 (0.004 ac)

REMN. 70-A
22 (0.460 ac)

PAR. 74

END OF PROJECT NO. F-030-1(1)

HIGHWAY

16 State of Hawaii
1.618 Ac.
(1.095 Ac.)

15 State of Hawaii
0.801 ac.

13 Manuel N. Coreia - 1/10
John N. Coreia - 1/10

Isabella Ferreira - 1/10
 Helen Martin - 1/10
 Minnie Ferreira - 1/10
 Julia Silva - 1/10
 Ermanille Gibbons - 1/10
 Dorothy Klusnick - 1/10
 Margaret Telles - 1/10

0.461 ac.
 Dennis Enriques
 George P. Enriques
 John W. Enriques
 Lawrence Enriques
 James R. Enriques
 Kenneth R. Enriques
 Gladys Black
 Joyce Ribucan

(2.575 Ac.) CANE HAUL ROAD
 ROAD (1.140 Ac.)
 ROAD (5.507 Ac.)
12

14
State of Hawaii
4.947 ac.

STATE OF HAWAII
LAND USE COMMISSION

Minutes of Meeting

Land Use Commission Hearing Room
Honolulu, Hawaii

December 15, 1967 - 2:00 p.m.

Commissioners Present: C. E. S. Burns, Jr., Chairman
Shelley Mark
Jim P. Ferry
Goro Inaba
Leslie Wung
Keigo Murakami
Shiro Nishimura

Commissioner Absent: Wilbert Choi

Staff Present: Ramon Duran, Executive Officer
Ah Sung Leong, Planner III
Roy Takeyama, Legal Counsel
Dora Horikawa, Stenographer

Persons planning to testify before the Commission were sworn in by Chairman Burns.

HEARINGS

PETITION OF THE EPISCOPAL CHURCH IN HAWAII (A67-163) TO RECLASSIFY APPROXIMATELY 6.7 ACRES FROM AGRICULTURE TO URBAN AT PUULOA, EWA, OAHU

A recommendation for approval of the petition based on the staff analysis as outlined in the staff report was presented by Mr. Leong. The major land areas in the leeward section such as Barbers Point, Naval Air Station, Campbell Industrial Park, Makakilo, Waipahu were identified on the map.

Reverend David Kennedy of the St. Barnabas' Episcopal Church in Ewa testified that subject property was purchased for the construction of an additional church site in Ewa. Subsequently they selected another more centrally located site and now wished to dispose of the subject parcel for residential development.

Reverend Kennedy submitted that this was an ideal location for homes being right across from the Ewa Beach Park.

Since there was no further testimony, the hearing was closed.

December 15, 1967

Mr. Duran advised that the conditions for approval of the special permit as outlined in the staff memo were reviewed with the petitioner who expressed complete agreement with the conditions.

Commissioner Ferry moved to accept the staff recommendation for approval of the special permit, including the conditions imposed therein. Commissioner Mark seconded the motion and it was passed unanimously.

SPECIAL PERMIT APPLICATION BY HAWAIIAN CABLE VISION CORP. (SP67-49) TO CONSTRUCT A TELEVISION STATION AT LAHAINA, MAUI

Staff memo, presented by Mr. Duran, recommended relocation of the proposed facility slightly mauka and about 800 feet from the present location, or that the petition on the present site be denied.

Subsequent to the preparation of the staff memo, Mr. Duran had been in touch with the petitioners who stated that the reception on the alternate site recommended by staff was not adequate to conduct the proposed facility. However, they were able to locate another site a mile down the road toward Olowalu in a kiawe grove where the antenna will be set off about 300' from the road and only 20' of the antenna will be visible. Mr. Duran emphasized the undesirability of locating the antenna so close to the road along the scenic drive.

Mr. E. W. Carter, President of the Hawaiian Cable Vision Corporation, testified that although the alternate site in the kiawe groves could receive fairly good TV signals, it was bothered by the automobile traffic noise from the road which wound back behind the site since the highway was in line with the signal beam. He added that this could not be eliminated by any suppressive measures.

Commissioner Nishimura felt that permission should be granted to the site determined by the petitioners as offering the best reception.

Commissioner Ferry suggested that the staff's objections might be overcome by proper planting and landscaping to make the facility as inconspicuous as possible. Mr. Carter replied that the building will be painted brown to blend in with the background and surrounded by trees and bushes. He assured that the facility will be free of any funnels, fans or shining objects at the top.

Commissioner Ferry moved to grant the special permit request on the condition that the building will be painted to blend with the landscape and sufficient foliage will be planted to prevent the building from being conspicuous. The motion was seconded by Commissioner Nishimura and passed unanimously.

RECESS

A short recess was called by the Chairman.

STATE OF HAWAII
LAND USE COMMISSION

VOTE RECORD

Item SP67-49 - Hawaiian Cable Vision Date December 15, 1967
~~November 27, 1967~~
 Place Kahului Library Honolulu Time 2:30 p.m.

Names	Yes	No	Abstain	Absent
WUNG, L.	✓			
INABA, G.	✓			
MURAKAMI, K.	✓			
XXXXXXXX				
CHOI, W.				
XXXXXXXX				
BURNS, C.E.S.	✓			
NISHIMURA, S.	✓			
MARK, S.	✓			
FERRY, J.	✓			
XXXXXXXX				

✓
S
M

Comments:
 Approve
 and transmit Landscape
 #

December 7, 1967

Mr. Henry J. Geist, Vice President
Hawaiian Cable Vision Corp.
P. O. Box 1097
Wahiawa, Oahu

Dear Mr. Geist:

The Land Use Commission next meets at 2:00 p.m. in the Land Use Commission Hearing Room, 426 South Queen Street, Honolulu, Hawaii, on December 15, 1967.

On or about that time a decision on your special permit application (SP67-49) will be rendered.

Although there is no requirement for you to be present, please feel free to do so should you wish to attend.

Very truly yours,

RAMON DURAN
Executive Officer

Eagle-A

Type-Erase

25% COTTON FIBER

November 29, 1967

Mr. Henry J. Geist, Vice President
Hawaiian Cable Vision Corp.
P. O. Box 1097
Wahiawa, Oahu

Dear Mr. Geist:

This is to advise you that we were unable to act on the special permit application by Hawaiian Cable Vision Corporation at our Land Use Commission meeting on November 27, 1967 due to the lack of a quorum. Four of our Commissioners, two of whom were hospitalized, were unable to be present.

We will advise you of the meeting date when a decision on your application will be rendered. Thank you for your cooperation.

Very truly yours,

RAMON DURAN
Executive Officer

cc: Maui Planning Comm.

Eagle-A

2293

Hawaiian Cable Vision Corporation

P. O. BOX 1097
WAHIAWA, HAWAII 96786

RECEIVED

20 November 1967

NOV 21 1967

State of Hawaii
Land Use Commission
426 Queen Street
Honolulu, Hawaii 96813

State of Hawaii
LAND USE COMMISSION

Attn: Mr. Ramon Duran, Executive Officer

Dear Mr. Duran:

This will acknowledge receipt of your letter of 16 November 1967.

With reference to our telephone conversation of 16 November 1967, in which you expressed some concern as to the proposed location of our television receiving facility on the basis that it might tend to detract from the natural beauty of the area and its surroundings and recommended we consider an alternate location which you had investigated, please be advised that we have conducted a thorough technical signal survey of this area and have found it to be technically inadequate as a receiving site. This survey was made on 18 November 1967 and revealed that the television signal levels in this area are inferior to those of the proposed location by a factor of 4 to 1. In addition there is severe ghosting in the alternate location due to absorption and/or reflection of the signals by the adjacent mountain range. We have also previously conducted a number of technical surveys of all available areas between Luanipoko stream and Napili and have found that television signal levels throughout this area from either the Oahu or Haleakala stations are not satisfactory for cable television service.

I should like to point out that the selection of a suitable television receiving site, insofar as signal quality is concerned, can only be done with instrumentation with the primary requisite being the availability of ghost free television signals from all stations and signal levels which are of sufficient intensity as to provide acceptable television reception without severe fading or distortion. The quality of television signals introduced into the CATV system must be acceptable to the Hawaiian Telephone Company in accordance with standards specified in P.U.C. Tariff No. 48.

Hawaiian Cable Vision Corporation

P. O. BOX 1097
WAHIAWA, HAWAII 96786

Other factors which must be considered in the selection of a satisfactory television receiving site, not necessarily in their order of importance, are as follows:

- a. Availability of power and telephone lines.
- b. Accessibility.
- c. Availability of land.
- d. Absence of man-made interference.
- e. Cable Mileage.
- f. Acceptability from the point of view of appearance.

You may rest assured that all of these factors were considered in arriving at the location proposed in our request for special permit (SP67-49) and in connection with its acceptability from the point of view of appearance we have assured the Maui Planning Commission, and do assure you, that we will make every effort to ensure that this facility will be made as unobtrusive as possible by judicious selection of exterior paint, camouflage, etc.

Thank you very much for your kind consideration and cooperation in connection with the processing of our request the approval of which will result in bringing a much needed service to an area which has long been without satisfactory television reception.

Very truly yours,



D. W. CARTER
President

STATE OF HAWAII
LAND USE COMMISSION

Kahului Library
Kahului, Maui

November 27, 1967
2:30 p.m.

STAFF REPORT

SP67-49 - HAWAIIAN CABLE VISION CORP.

A special permit request has been filed with the Maui County Planning Commission to construct, operate and maintain a Community Antenna Television (CATV) System consisting of a 1-story 12' x 12' television receiving and transmission station, and a 60' high steel tower, for the purpose of providing improved television service to the Lahaina-Napili area.

The proposed facility is to be located in the Agricultural District, approximately 150' mauka of Honopiilani Highway on the easterly or Lahaina side of Launiupoko Stream, TMK 4-7-01: portion of 2. The site is between the highway and the canehaul road. Access to the facility will be off the canehaul road. The building will be set back 20 feet from the canehaul road and the antenna will be 70 feet back from the canehaul road. The elevation of the tower site is approximately 20' above the elevation of the highway. The area between the canehaul road and the highway, and surrounding the site in question is mostly cleared vacant land. Mauka of the canehaul road on either side of the stream are several water storage ponds. Extensive areas for growing cane exist about 1,000 feet on the Lahaina side of the property in question. Large acreages of cane begin in the opposite direction about a mile from the property in question. Scenic mountain ridges and cones extend toward the sea immediately above the area under discussion.

The median annual rainfall at Station 296 at Olowalu, elevation 6 feet, is 10.7 inches. The overall soil suitability classification is "very poor" for overall agricultural use. Because of rocky conditions, the soil is not

suitable for machine tillability. The average slope of the area is between 10 and 20%.

The facility will receive line-of-site transmissions from Haleakala and transmit to each individual house subscribing to the service by means of a cable located about 12 inches below the telephone line. The cable is about the size of the telephone line. In the event of underground wiring in a particular area, this line would also be located underground. Hawaiian Telephone Co. has agreed to a 10-year contract to provide the connection facilities, with automatic renewal at the end of 10 years unless there is some legal involvement at the time. This cable can carry up to 12 television channels. There are 4 systems on the Island of Oahu in Aiea, Hahaione, Kailua, Kalihi and Kailua.

The proposed rate structure is \$7.50 per month for a private home and an installation charge of \$37.50. The installation charge will be increased to \$47.50 later on. The proposed facility will hopefully be in operation in February of 1968.

The Maui County Planning Commission, at its November 7, 1967 meeting, voted to grant the approval of the request.

The proposed special permit request has been reviewed in the field and evaluated following the guidelines established by the Commission in determining an "unusual and reasonable use". The proposed request complies with most of the guidelines established by the Commission with the exception of "that the proposed use will make the highest and best use of the land involved for the public welfare".

It has been well established that the most significant economic potential for Maui is tourism. It is also true that in the last few years Kaanapali

has developed as a tourist destination area. It is continuing to expand at a rapid rate and the primary access to Lahaina and Kaanapali is the Honopiilani Highway from the Kahului Airport. The highway has been realigned and is one of the more modern scenic highway drives in the State. There are many grand old trees along this alignment to Lahaina, with the exception of the area in question. The State has an anti-billboard law which has been in effect for many, many years and was designed to prevent the construction of unattractive structures along the highways. Lahaina is presently spending thousands of dollars planning the restoration of this town to make it more attractive and to attract more tourists. Tourists in increasing numbers will be using the highway passing the proposed site. The backdrop in this area provides views of some of the most spectacular mountain formations along this highway.

The location of a 60' tower will be an eyesore on the landscape and will detract from the present character of the scenic drive from Wailuku to Lahaina. There is an existing facility of this nature approximately 2 miles beyond the site in question opposite the road into Lahaina. The building itself is partially hidden by the surrounding cane lands. Nevertheless, the bright yellow building is visible when leaving Lahaina and its tower, approximately 60' high, is obnoxious on the landscape particularly since it is painted orange and white.

To attempt to camouflage the station in question would be an improvement over the existing site near Lahaina. However, this compromise is unacceptable. It is therefore recommended that the proposed facility be relocated slightly mauka and about 800 feet from the present location, in an area used to stock-pile boulders removed from the cane lands, or that the petition on the present site be denied.

November 16, 1967

Mr. Henry J. Geist, Vice President
Hawaiian Cable Vision Corp.
P. O. Box 1097
Wahiawa, Hawaii

Dear Mr. Geist:

The Land Use Commission next meets at 2:30 p.m. at the
Kahului Library, Kahului, Maui on November 27, 1967.

At that time, your application for a special permit (SP67-49)
will be reviewed.

Although there is no requirement for you to be present, should
you wish to attend, please feel free to do so.

Very truly yours,

RAMON DURAN
Executive Officer

SP 67-49 Hawaiian Cable Vision Corp.

① Rainfall = Sta # 296 Olowalu
(Elev. 6') Med. annual = 10.7"

② Detailed Land Classif = Map # 9
E 73 = { Machine Tillability - not sintered
Stoniness — rocky
Depth — variable
Slope — 0-35 (average = 4 + 9%)
Texture — fine to med. fine
Drainage — well drained
Color — dark brown to ^{dark} red br.
Major exist. use - grazing, forest

very poor suitability
for overall ag. use

③ Photo = EKN ICC-99

④ LUC Maps = M-2 + M-3

⑤ TMK = 4-7-01: 2 (p)



Ben Sharp
363249
Maui Rep.

Site 30x80' between
Haul Cone Rd. & Hwy on
Lahaina side of
Launiupoko Stream
12x12 Bldg set back 20' from H.C. Rd
& 60' tower set back 70' "

L.M. May, 1934
 Source: Tax Maps Bureau, Geo. F.
 Wright & U.S.G.S. Maps.

Note: For deed of Rd. PARS. G1, G2, G3, G4,
& par. G6 & par. G9, See TMB #189 '57
(#513-32)

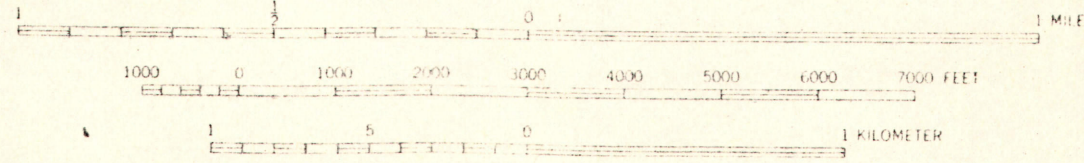
LAUNIUPOKO, LAHAINA, MAUI.



53-1 (HAWAII AERIAL TRAM)
 '63 (TRAMWAY & REL. USE)

40° 37' 30"

SCALE 1:24000



CONTOUR INTERVAL 40 FEET
 DATUM IS MEAN SEA LEVEL
 DEPTH CURVES IN FEET—DATUM IS MEAN LOWER LOW WATER
 SHORELINE SHOWN REPRESENTS THE APPROXIMATE LINE OF MEAN HIGH WATER
 MEAN RANGE OF TIDE IS APPROXIMATELY 1 FOOT

FOR SALE BY U. S. GEOLOGICAL SURVEY, DENVER 2, COLORADO OR WASHINGTON 25, D. C.
 A FOLDER DESCRIBING TOPOGRAPHIC MAPS AND SYMBOLS IS AVAILABLE ON REQUEST

1-20-65-EKN-ICC-100
 EKN-ICC-99
 " - " - 98
 " - " - 78

MRS Chang

JOSEPH S. MEDEIROS, JR., CHAIRMAN
KAZUO KAGE, VICE-CHAIRMAN
G. ALAN FREELAND, MEMBER
WILLIAM HONG, MEMBER
YOSHIKAZU MATSUI, MEMBER
PETER MATSUOKA, MEMBER
MOTOHISA UNEMORI, MEMBER



2285
KOICHI HAMADA, EX-OFFICIO
HIDEO HAYASHI, EX-OFFICIO
JEAN R. LANE, EX-OFFICIO
MASAO SONE, EX-OFFICIO
ROBERT O. OHATA, PLANNING DIRECTOR
MRS. EVA M. DUPONTE, ADM. ASST.

**PLANNING COMMISSION
COUNTY OF MAUI**

POST OFFICE BOX 1487
KAHULUI, MAUI, HAWAII 96732

November 7, 1967

RECEIVED

NOV 8 1967

State of Hawaii
LAND USE COMMISSION

Mr. Ramon Duran
Executive Officer
State Land Use Commission
426 Queen Street
Honolulu, Hawaii 96813

Dear Mr. Duran:

The Maui Planning Commission, at its meeting of November 7, 1967, voted unanimously to grant approval of a request for special use permit from Hawaiian Cable Vision Corporation to construct, operate and maintain a community antenna television (CATV) system in the vicinity of Launiupoko Stream, Lahaina, Maui, Hawaii.

Enclosed herewith are the following:

1. Application for Special Use Permit.
2. Copy of a letter from Mr. John W. Siemer, Vice-President-Manager, Pioneer Mill Company, indicating the landowner's concurrence with the application.
3. Copy of a letter from Mr. Henry J. Geist, Vice-President, Hawaiian Cable Vision Corporation, submitting additional information pertaining to the request.
4. Notice of public hearing.
5. Transcript of the public hearing.
6. Staff report.

Very truly yours,

A handwritten signature in black ink, appearing to read "Robert O. Ohata".

ROBERT O. OHATA
Planning Director

cc: Henry J. Geist

November 3, 1967

TO: MAUI PLANNING COMMISSION
FROM: PLANNING DEPARTMENT
SUBJECT: LUC SPECIAL USE PERMIT APPLICATION NO. 26,
HAWAIIAN CABLE VISION CORPORATION

Hawaiian Cable Vision Corporation is applying for a LUC special permit to construct, operate and maintain a community antenna television (CATV) system in the vicinity of Launiupoko Stream in Lahaina. Facilities will consist of a 60 foot steel tower and a small building (approximately 12' x 12'), which will house the necessary receiving equipment. Coaxial transmission cables will be utilized along the Hawaiian Telephone system for distribution to the home, similar to the regular telephone lines. The purpose of the installation is to provide improved television service to the Lahaina-Napili area.

LOCATION - The tower and receiving building are to be located on land owned by Pioneer Mill Company, under license to the applicant. The lands are located immediately north of Launiupoko Stream, below the existing canehaul road and approximately 150 feet mauka of Honoapiilani Highway. It is approximately three miles south of Lahaina town. The current land use classification is agricultural. The surrounding lands are used exclusively for cultivation of sugar cane. The location was chosen because of the fact that it affords a direct line of site to the transmitting stations on Haleakala.

RECOMMENDATION - It is the recommendation of the staff that the request for special use permit be granted for the following reasons:

- (1) The use is unusual and reasonable as established by guidelines in the State Land Use law.
- (2) It would provide a necessary service to persons residing in the Lahaina District who do not currently enjoy satisfactory television reception. This is particularly significant in view of the expansion projected for Lahaina.
- (3) The use is not objectionable nor incompatible with surrounding uses.

It is further recommended that approval be granted on the condition that the facilities, to the extent possible, be constructed and painted in such a manner that they blend with the surroundings and be as unobstrusive as possible, and that the applicant work with the Planning Department to achieve this end.

MAUI PLANNING COMMISSION
PUBLIC HEARING
SPECIAL USE PERMIT, ACT 205, S.L.H. 1963
Tuesday, October 10, 1967

APPLICATION NO. 26
(Hawaiian Cable Vision Corporation, Lahaina)

The public hearing on the following request for SPECIAL USE PERMIT under provisions of SECTION 98H-6, R.L.H. 1955, 1961 SUPPLEMENT AS AMENDED BY ACT 205, S.L.H. 1963, was held on Tuesday, October 10, 1967, in the Board of Supervisors Chambers, Wailuku, Maui, Hawaii.

LAHAINA, MAUI

Construction, operation and maintenance of a Community Antenna Television (CATV) System, consisting of a television receiving station, including a 60 foot steel tower, and coaxial transmission cables for the purpose of providing improved television service to the Lahaina-Napili area. The proposed facility is to be located approximately 150 feet on the easterly (mauka) side of Honoapiilani Highway, in the vicinity of Launiupoko Stream, being a portion of TMK 4-7-01: parcel 2.

Applicant: Hawaiian Cable Vision Corporation
Henry J. Geist, Vice President

A quorum of the Commission was in attendance. (See record of attendance.)

The Director read the NOTICE OF PUBLIC HEARING, a copy of which is hereto annexed and made a part hereof with AFFIDAVIT OF PUBLICATION, published in the Maui News, a newspaper published and circulated in the County of Maui, being the County in which said Commission is located, on September 9, 1967, as required by Section 98H-6 of Act 205, S.L.H. 1963.

The Director read the letter of application for a special use permit signed by Henry J. Geist, Vice President, Hawaiian Cable Vision Corporation, dated August 29, 1967, attached hereto and made a part hereof.

From Master Plan Map No. 7, Planner Nakamura pointed out the proposed location of the receiving station at the intersection of the canehaul road and Launiupoko Stream, which would place the station at approximately 150 feet from the highway. Planner Nakamura told Commissioners: "This location is in the State Agricultural District. The current use in that area is essentially agricultural. This location was so chosen because of the fact that they accorded a direct line of sight to Haleakala. If they come any closer towards Lahaina the mountains become obstructive. If this application is granted, the applicant have agreed to paint the block building housing their equipment and the tower in accordance with the wishes of the Commission, which will enable it to blend unobtrusively as possible into the surrounding area."

There were no letters of approval or protest as of 1:50 p.m. this date.

The public hearing was then opened to the public for testimony.

MR. D. W. CARTER, President, Hawaiian Cable Vision Corporation: "I have no further testimony unless there are some questions."

MR. HAYASHI: "On the service connection to different houses, is that going to be one connection for each individual house?"

10/10/67

MR. CARTER: "Yes, usually. If you go into the apartment type of structure, it will be connected to serve the whole apartment house. With individual residence, only one connection."

MR. HAYASHI: "How high will the main cable be from the ground?"

MR. CARTER: "12 inches below the telephone line."

COMMISSIONER MATSUI: "In other words, you have a wire going into every home?"

MR. CARTER: "It is very similar to the telephone cable. It is about the same size as the telephone line. It would be the same thing as the telephone line, except a different type of cable."

COMMISSIONER MATSUI: "If you have a subdivision with underground wiring, what would you do?"

MR. CARTER: "This go underground just like your telephone line and power line."

COMMISSIONER MATSUI: "What control does the County have regarding underground wiring?"

MR. SONE: "Once a subdivider says he is going underground, everything goes underground."

DIRECTOR OHATA: "The County Chairman is presently reviewing an underground wiring ordinance prepared by our staff. It is under study by him for presentation to the Board."

DIRECTOR OHATA: "Are you a public utility insofar as State law is concerned?"

MR. CARTER: "No. We are a private enterprise."

DIRECTOR OHATA: "What is your relationship with Hawaiian Telephone Company?"

MR. CARTER: "We have a contract with Hawaiian Telephone Company to put this cable system in."

DIRECTOR OHATA: "If your contract with Hawaiian Telephone Company terminates, would your subscribers be left in the lurch?"

MR. CARTER: "First of all, it is a 10-year contract. At the end of 10 years, we go back again and put up a bond which is a 10 year bond for the performance of 10 years. After the 10 years is up, this thing is subject to automatic renewal, provided we do not violate PUC rules and regulations or get into some legal involvement. Once the 10 year period is over, then it automatically continues unless you violate the law."

DIRECTOR OHATA: "What are you carrying insofar as signals are concerned? Would this be straight VHF and FM signals?"

MR. CARTER: "VHF and FM signals. There will be four television channels of VHF and whatever number of channels of FM available. For instance, there are three on Oahu. Two more will be added later, making it five."

DIRECTOR OHATA: "What would this do to the cable? Is this still one service?"

MR. CARTER: "It will be controlled by the same cable."

DIRECTOR OHATA: "It won't be a mess of a problem?"

10/10/67

MR. CARTER: "No. On this cable there are 12 television channels available from that one wire, plus all the FM you want to put up. If we have an additional TV station come on the air later, the channel will become available. We can add local originated programs. We can put movies on the cable. Anything you want. The only thing you cannot do is to interrupt the standard TV station broadcast, because you are eating up their time. It becomes a very good tool for the community if they want to put on a local show."

DIRECTOR OHATA: "Is there a similar type of installation elsewhere in the State?"

MR. CARTER: "Yes. There are four systems on the Island of Oahu. Aina Haina, Hawaii Kai, Kalihi and Kailua."

DIRECTOR OHATA: "Is that the same company?"

MR. CARTER: "Separate company, but they have a similar contract with Hawaiian Telephone Company."

PLANNER NAKAMURA: "Can you give us some idea of your rate structure?"

MR. CARTER: "The rate will be \$7.50 per month for a private home. We have special rates for hotels depending on how large they are. The smaller hotels will be a little higher. The larger hotels like Kaanapali are 5¢ to 4½¢ a day. Generally, the residential area, other than condominium, is \$7.50 per month."

PLANNER NAKAMURA: "What about installation?"

MR. CARTER: "The installation charge will be \$37.50. If the entire cable from the telephone company comes through, then later it will go up to \$47.50 because they have to send a crew out to do this."

PLANNER NAKAMURA: "What is your timetable?"

MR. CARTER: "We are shooting for the first of February. It will largely depend on the cable delivery, equipment delivery and installation by the Telephone Company, etc. As I see it, it will be turned on basically in April. As we finish the town of Lahaina, we will turn it on. We will turn on what we can turn on."

COMMISSIONER KAGE: "Would you be maintaining a service crew here?"

MR. CARTER: "Hawaiian Telephone will be maintaining the cable itself. The receiving side of Launiupoko is not provided by Hawaiian Telephone Company. It will be maintained by the Hawaiian Cable Vision Corporation. We must maintain that."

No others spoke for the granting of the special permit.

No one spoke against the granting of the special permit.

The Chair closed the public hearing at 2:04 p.m.

Ayako Ishikawa
Ayako Ishikawa
Clerk-Stenographer

10/10/67

RECORD OF ATTENDANCE:

Present: K. Kage, Vice-Chairman, Presiding
W. Hong, member
Y. Matsui, member
P. Matsuoka, member
M. Unemori, member
K. Hamada, ex-officio
H. Hayashi, ex-officio
J. R. Lane, ex-officio
M. Sone, ex-officio

Excused: J. S. Medeiros, Jr., Chairman
G. A. Freeland, member

In Attendance: R. O. Ohata, Planning Director
H. Nakamura, Planner
D. W. Carter, President, Hawaiian
Cable Vision Corporation
Sean O'Neil, Maui News

Setup file

RECEIVED

SEP 7 1967

NOTICE OF PUBLIC HEARING
SPECIAL USE PERMIT

State of Hawaii
LAND USE COMMISSION

NOTICE IS HEREBY GIVEN of a public hearing to be held by the County of Maui Planning Commission on Tuesday, October 10, 1967, in the Board of Supervisors Chambers, Wailuku, Maui, Hawaii, at 1:30 p.m. or as soon thereafter as those interested may be heard to consider the following request for SPECIAL USE PERMIT under provisions of SECTION 98 H-6, REVISED LAWS OF HAWAII 1955, 1961 SUPPLEMENT, AS AMENDED BY ACT 205, SESSION LAWS OF HAWAII 1963:

LAHAINA, MAUI

Construction, operation and maintenance of a Community Antenna Television (CATV) System, consisting of a television receiving station, including a 60 foot steel tower, and coaxial transmission cables for the purpose of providing improved television service to the Lahaina-Napili area. The proposed facility is to be located approximately 150 feet on the easterly (mauka) side of Honeapiilani Highway, in the vicinity of Launiupoko Stream, being a portion of TMK 4-7-01: parcel 2.

Applicant: Hawaiian Cable Vision Corporation
Henry J. Geist, Vice-President

Sketch showing the general location is on file in the office of the County of Maui Planning Commission at Naska, Kahului, Maui, Hawaii, and is open to the public for inspection during office hours.

All protests against the SPECIAL USE PERMIT should be filed in writing to said Commission, P.O. Box 1487, Kahului, Maui, Hawaii, before the date of the public hearing or presented in person at the time of the public hearing.

MAUI PLANNING COMMISSION
JOSEPH S. MEDEIROS, JR., Chairman
By Robert O. Ohata
County Planning Director

(MN--September 9, 1967)

cc: Land Use Commission ✓
Board of Supervisors
Mr. Henry J. Geist
Pioneer Mill Company
Hawaiian Telephone Company

**NOTICE OF PUBLIC HEARING
SPECIAL USE PERMIT**

NOTICE IS HEREBY GIVEN of a public hearing to be held by the County of Maui Planning Commission on Tuesday, October 10, 1967, in the Board of Supervisors Chambers, Wailuku, Maui, Hawaii, at 1:30 p.m. or as soon thereafter as those interested may be heard to consider the following request for SPECIAL USE PERMIT under provisions of SECTION 98 H-6, REVISED LAWS OF HAWAII 1955, 1961 SUPPLEMENT, AS AMENDED BY ACT 205, SESSION LAWS OF HAWAII 1963:

LAHAINA, MAUI

Construction, operation and maintenance of a Community Antenna Television (CATV) System, consisting of a television receiving station, including a 60 foot steel tower, and coaxial transmission cables for the purpose of providing improved television service to the Lahaina-Napili area. The proposed facility is to be located approximately 150 feet on the easterly (mauka) side of Honoapiilani Highway, in the vicinity of Launiupeko Stream, being a portion of TMK 4-7-01: parcel 2.

Applicant: Hawaiian Cable Vision Corporation
Henry J. Geist, Vice-President

Sketch showing the general location is on file in the office of the County of Maui Planning Commission at Naska, Kahului, Maui, Hawaii, and is open to the public for inspection during office hours.

All protests against the SPECIAL USE PERMIT should be filed in writing to said Commission, P.O. Box 1487, Kahului, Maui, Hawaii, before the date of the public hearing or presented in person at the time of the public hearing.

MAUI PLANNING COMMISSION
JOSEPH S. MEDEIROS, JR., Chairman
By Robert O. Ohata
County Planning Director

(MM--September 9, 1967)

cc: Land Use Commission
Board of Supervisors
Mr. Henry J. Geist
Pioneer Mill Company
Hawaiian Telephone Company

INSTRUCTIONS:

1. To be filed in triplicate.
2. Use black ink or typewriter with black ribbon.
3. Use additional sheets if necessary.

SP-67-49

MAUI PLANNING COMMISSION
P.O. BOX 1487, KAHULUI, HAWAII

APPLICATION FOR SPECIAL PERMIT
Special Permit is hereby requested:

DO NOT WRITE IN THIS SPACE

Appl. & fee received	<u>9/5/67</u>
Notice published	_____
Public hearing	_____
Recommendation to LUC	_____
Action by State LUC	_____
County & Appl. notified	_____

A. Description of Property: (1) Tax Map Key No. 4-7-01-2
 (2) Lot Area #2-a portion of (3) Location 150 ft. off highway at Launiupoko stream.

B. Ownership: (1) Owner's name Pioneer Mill Company Ltd.
 Licensee's name _____
 (2) ~~Lessee's name~~ Hawaiian Cable Vision Corp. (3) Unexpired term 20 years

C. Request: (1) State request briefly and exactly: It is requested that a special permit be issued to construct a commercial building and erect a 60 foot steel tower in the location indicated to serve as a receiving site for the Lahaina-Napili CATV System. This will be an unattended station except for routine maintenance.

(2) Reasons justifying granting of request: See attached letter

D. Applicant: (1) Name Hawaiian Cable Vision Corp.
 (2) Address P. O. Box 1097, Wahiawa, Hawaii (3) Telephone 635-859 or
363-249
 (4) Signature Henry J. Geist
 Henry J. Geist, Vice President

E. Planning Commission action: _____ Date _____ Vote: ayes noes

Reasons: _____

F. State Land Use Commission's action: _____ Date: _____

G. Copies to: State LUC _____ Supervisors _____ Applicant _____ Owner & Lessee _____

 **PIONEER MILL COMPANY, LIMITED**

Growers of sugar cane and producers of raw sugar

P. O. Box 727
Lahaina, Hawaii 96761

August 29, 1967

Planning Commission
County of Maui
P. O. Box 1487
Kahului, Maui 96732

Gentlemen:

This is to confirm that we are undertaking an issuance of a license for the use of the land area outlined in this application. May this advise that we join Hawaiian Cable Vision Corporation in submitting this application for a special permit.

Very truly yours,

PIONEER MILL COMPANY, LIMITED

John W. Siemer
Vice President-Manager

JWS:ms

Hawaiian Cable Vision Corporation

P. O. BOX 1097
WAHIAWA, HAWAII 96786

August 29, 1967

Planning Commission
County of Maui
P. O. Box 1487
Kahului, Maui, Hawaii 96732

Gentlemen:

With reference to the enclosed application for a special permit, we submit the following in the way of clarification as to the necessity thereof.

This corporation was formed on 2 June 1967 for the express purpose of bringing improved television service to the Lahaina-Napili area via a Community Antenna Television (CATV) System and have entered into a contract with the Hawaiian Telephone Company to construct and operate such a system under the provisions of P.U.C. Tariff Number 48. This area has long been without satisfactory television reception due to the almost complete absence of suitable television signals from either the television stations on Oahu or the translator stations on Haleakala.

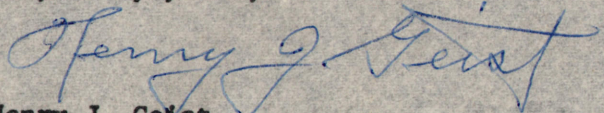
Basically, a CATV system comprises a network of coaxial cables which are carried on telephone/power company poles throughout the community and connected to each residence or subscriber in much the same manner as a telephone or power line. The main cable of this network, commonly called the "trunk", is connected to a television receiving station so located as to provide optimum reception of all channels and equipped with special antennas and television receiving equipment.

We have conducted extensive signal surveys of the area between Lahaina and Napili at elevations up to 750 feet and have determined that signal levels from Oahu stations or the Haleakala translators are not adequate for satisfactory television reception in the home or for the introduction into a CATV system. It has been determined, however, that direct line of sight reception of the Haleakala translator stations can be achieved in the Lanipoko area approximately two miles south of Lahaina at the location indicated in the application. This location will provide high quality television signals with a minimum of trunk line required to connect to the CATV system in Lahaina. We are obtaining a license to use this area, for the aforementioned purpose, from the Pioneer Mill Company.

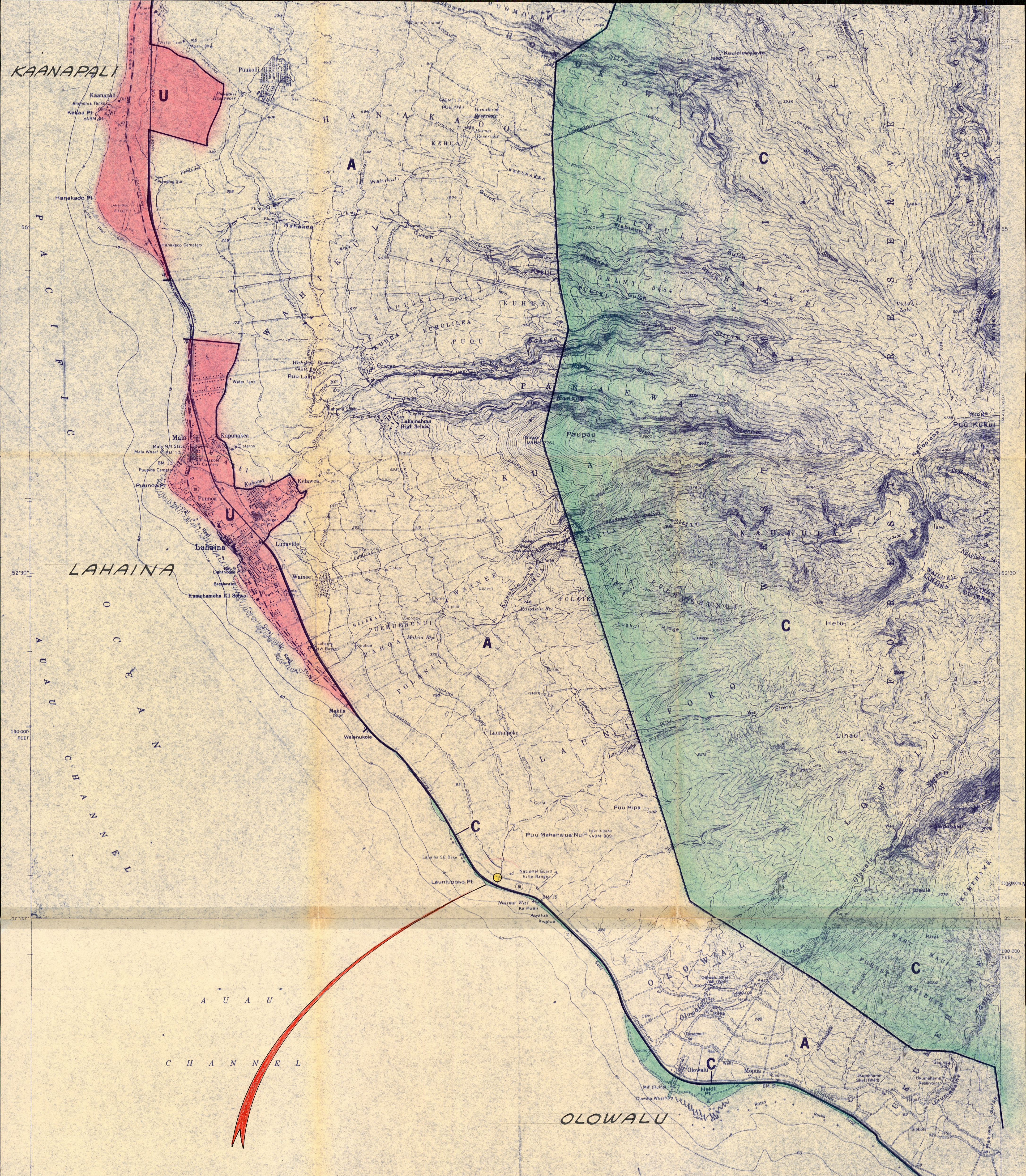
We therefore propose, subject to your approval, to construct a 12' x 12' x 8' concrete block building to house the necessary receiving equipment, together with the erection of a small sixty (60) foot steel tower to support the antennas, in the area indicated in the application. This building and tower will be painted so as to blend with the surrounding landscape. Such building and tower will be set back 150 feet from the highway.

We trust the foregoing will serve to enlighten you as to the necessity and desirability of providing this much needed service to the Lahaina-Napili area and the reason for our request for a special permit.

Very truly yours,



Henry J. Geist
Vice President



SP67-49 HAW'N CABLE VISION

CORRECTED
JAN 17 1939
JAN 20 1939
FEB 3 1939
FEB 15 1940
JAN 7 1941
SEP 1 1942
FEB 10 1943



Dwg. No. 2030
By: L.K.H. May, 1934
Source: Tax Maps Bureau, Geol. Wright & U.S.G.S. Maps.

Note: For deed of Rd. PARS. G1, G2, G3, G4, G5, G6, G7, G8, G9, G10, G11, G12, G13, G14, G15, G16, G17, G18, G19, G20, G21, G22, G23, G24, G25, G26, G27, G28, G29, G30, G31, G32, G33, G34, G35, G36, G37, G38, G39, G40, G41, G42, G43, G44, G45, G46, G47, G48, G49, G50, G51, G52, G53, G54, G55, G56, G57, G58, G59, G60, G61, G62, G63, G64, G65, G66, G67, G68, G69, G70, G71, G72, G73, G74, G75, G76, G77, G78, G79, G80, G81, G82, G83, G84, G85, G86, G87, G88, G89, G90, G91, G92, G93, G94, G95, G96, G97, G98, G99, G100, See MB #189-57 (4513-32)

SP67-49 HAWAIIAN CABLE VISION

ADVANCE SHEET
SUBJECT TO CHANGE

Parcels Dropped: 5, 6, 7, 8, 9, 10, 11, 19, 20, 21, 22, 23, 24, 25, 26, 27, 28, 29, 30, 31, 32, 33, 34, 35, 36, 37, 38, 39, 40, 41, 42, 43, 44, 45, 46, 47, 48, 49, 50, 51, 52, 53, 54, 55, 56, 57, 58, 59, 60, 61, 62, 63, 64, 65, 66, 67, 68, 69, 70, 71, 72, 73, 74, 75, 76, 77, 78, 79, 80, 81, 82, 83, 84, 85, 86, 87, 88, 89, 90, 91, 92, 93, 94, 95, 96, 97, 98, 99, 100

SECOND DIVISION		
ZONE	SEC.	PLAT
4	7	01
CONTAINING PARCELS		
SCALE: 1 in. = 1000 ft.		

LAUNIUPOKO, LAHAINA, MAUI.