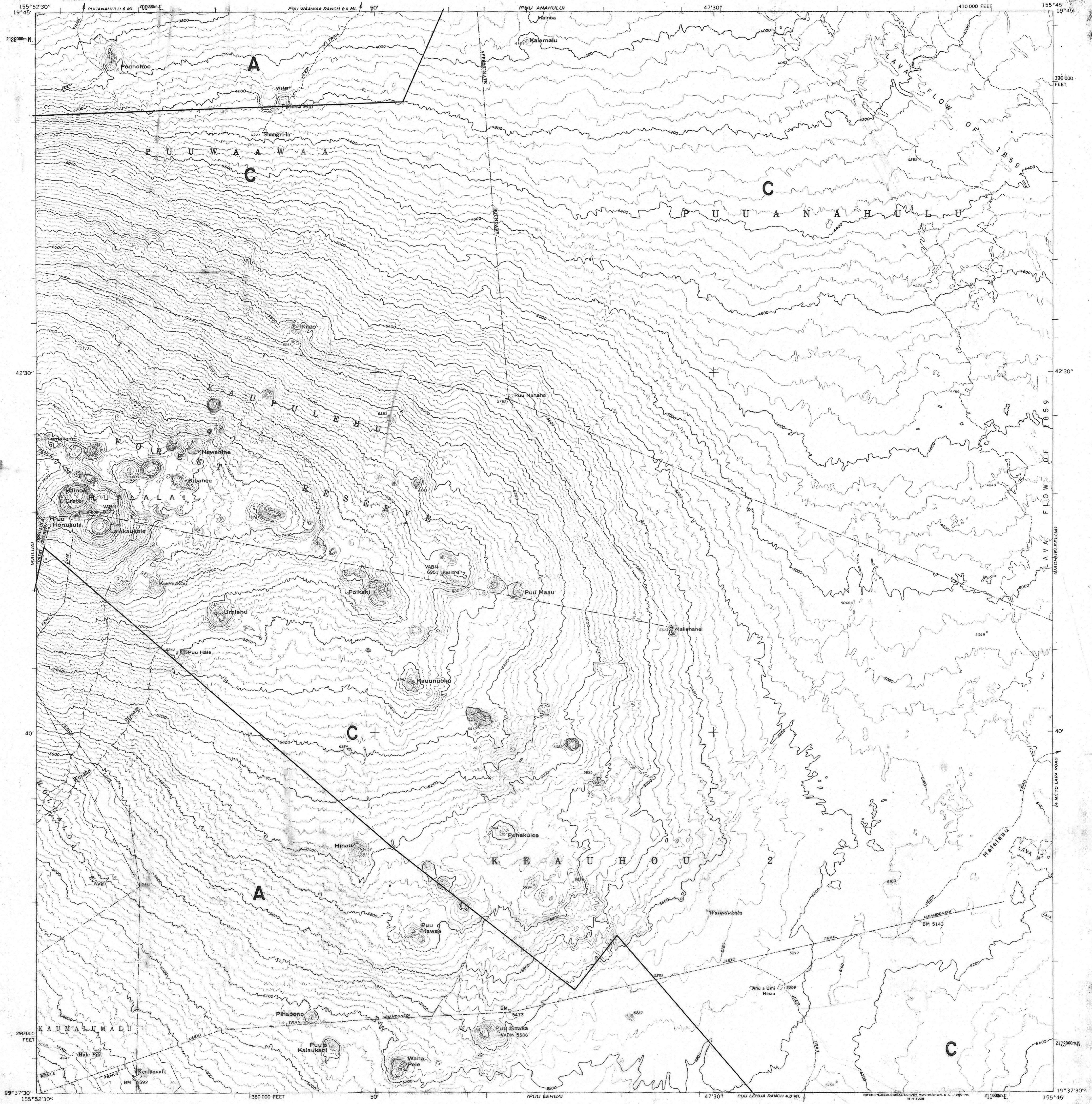


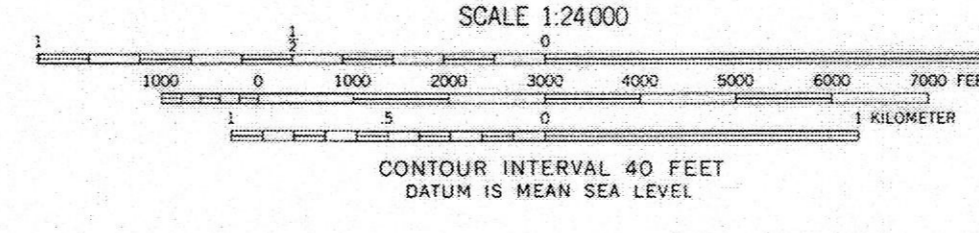
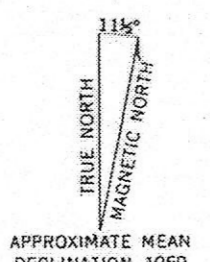
UNITED STATES  
DEPARTMENT OF THE INTERIOR  
GEOLOGICAL SURVEY

LAND USE DISTRICT BOUNDARIES		
DISTRICT MAP <b>H-17</b>	STATE OF HAWAII LAND USE COMMISSION DEPT. OF PLANNING & ECONOMIC DEVELOPMENT EFFECTIVE DATE: DEC 20 1974	DISTRICTS U = URBAN R = RURAL A = AGRICULTURAL C = CONSERVATION

HUALALAI QUADRANGLE  
HAWAII-HAWAII CO.  
ISLAND OF HAWAII-NORTH KONA DISTRICT  
7.5 MINUTE SERIES (TOPOGRAPHIC)  
NE/4 KAILUA 15' QUADRANGLE



Mapped, edited, and published by the Geological Survey  
Control by USGS and USC&GS  
Topography from aerial photographs by photogrammetric methods  
Aerial photographs taken 1954. Field check 1959  
Polyconic projection. Old Hawaiian datum  
10,000-foot grid based on Hawaiian coordinate system, zone 1  
1000-meter Universal Transverse Mercator grid ticks,  
zone 5, shown in blue  
Unchecked elevations are shown in brown



BOUNDARY AMENDMENTS	
DOCKET NO.	DATE

ROAD CLASSIFICATION  
Trails

HUALALAI, HAWAII  
NE/4 KAILUA 15' QUADRANGLE  
N1937.5-W15545/7.5  
1959

**H-17**

**H-17**

THIS MAP COMPLIES WITH NATIONAL MAP ACCURACY STANDARDS  
FOR SALE BY U. S. GEOLOGICAL SURVEY, DENVER 25, COLORADO OR WASHINGTON 25, D. C.  
A FOLDER DESCRIBING TOPOGRAPHIC MAPS AND SYMBOLS IS AVAILABLE ON REQUEST