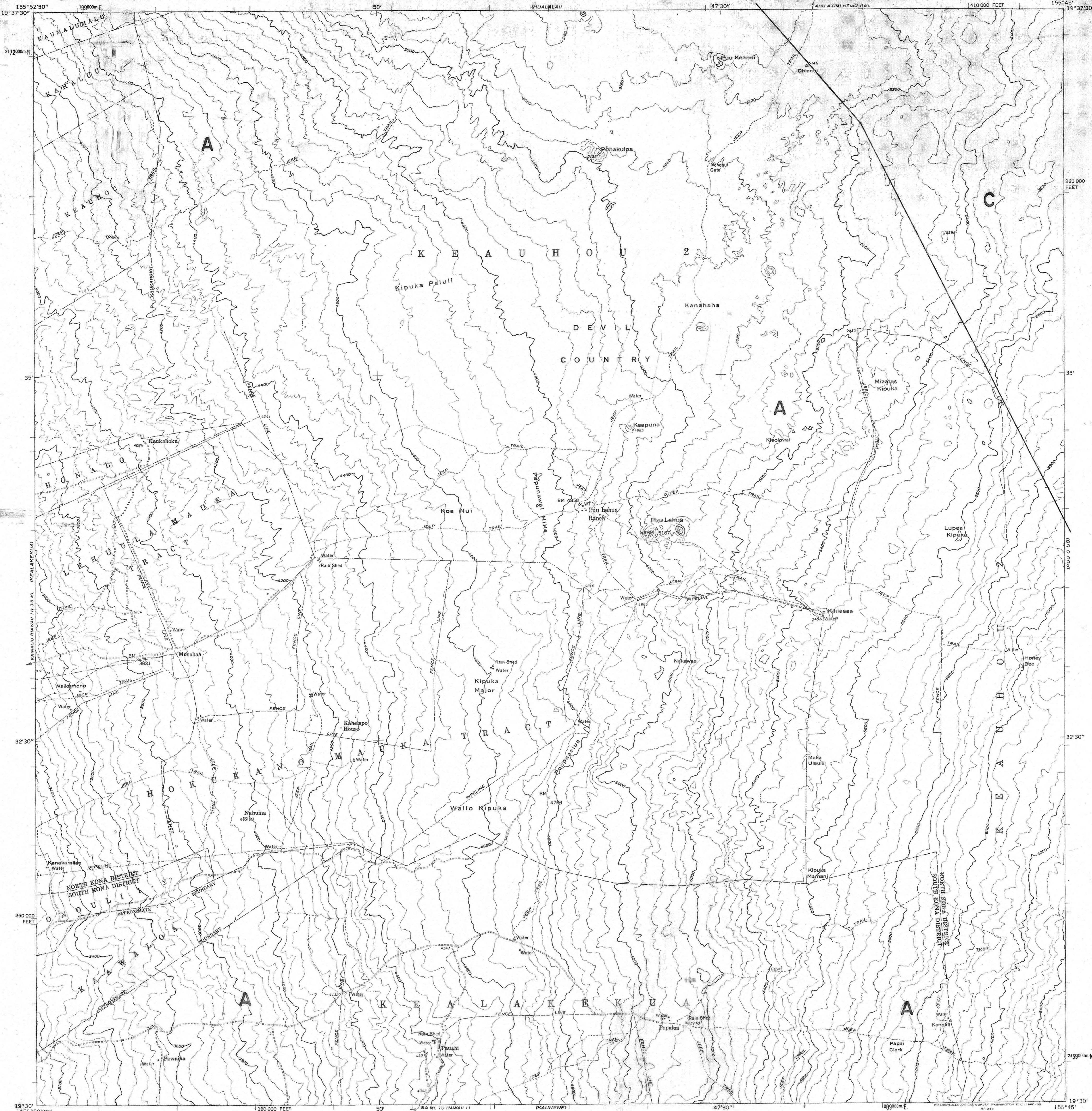


UNITED STATES
DEPARTMENT OF THE INTERIOR
GEOLOGICAL SURVEY

LAND USE DISTRICT BOUNDARIES		
DISTRICT MAP	STATE OF HAWAII LAND USE COMMISSION DEPT. OF PLANNING & ECONOMIC DEVELOPMENT EFFECTIVE DATE: DEC 30 1974	DISTRICTS U = URBAN R = RURAL A = AGRICULTURAL C = CONSERVATION
H-18		

PUU LEHUA QUADRANGLE
HAWAII-ISLAND AND COUNTY OF HAWAII
7.5 MINUTE SERIES (TOPOGRAPHIC)
SE/4 KAILUA 19' QUADRANGLE



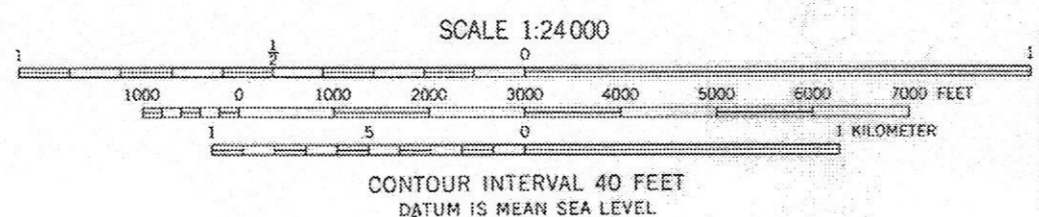
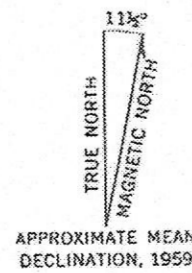
Mapped, edited, and published by the Geological Survey
Control by USGS and USC&GS

Topography from aerial photographs by photogrammetric methods
Aerial photographs taken 1954. Field check 1959

Polygonic projection. Old Hawaiian datum
10,000-foot grid based on Hawaiian coordinate system, zone 1
1000-meter Universal Transverse Mercator grid ticks,
zone 5, shown in blue

Unchecked elevations are shown in brown

H-18



SCALE 1:24,000

CONTOUR INTERVAL 40 FEET

DATUM IS MEAN SEA LEVEL

BOUNDARY AMENDMENTS	
DOCKET NO.	DATE

ROAD CLASSIFICATION
Unimproved dirt

PUU LEHUA, HAWAII
SE/4 KAILUA 19' QUADRANGLE
N1930-W15545/7.5

1959

H-18

FOR SALE BY U. S. GEOLOGICAL SURVEY, DENVER 25, COLORADO OR WASHINGTON 25, D. C.
A FOLDER DESCRIBING TOPOGRAPHIC MAPS AND SYMBOLS IS AVAILABLE ON REQUEST