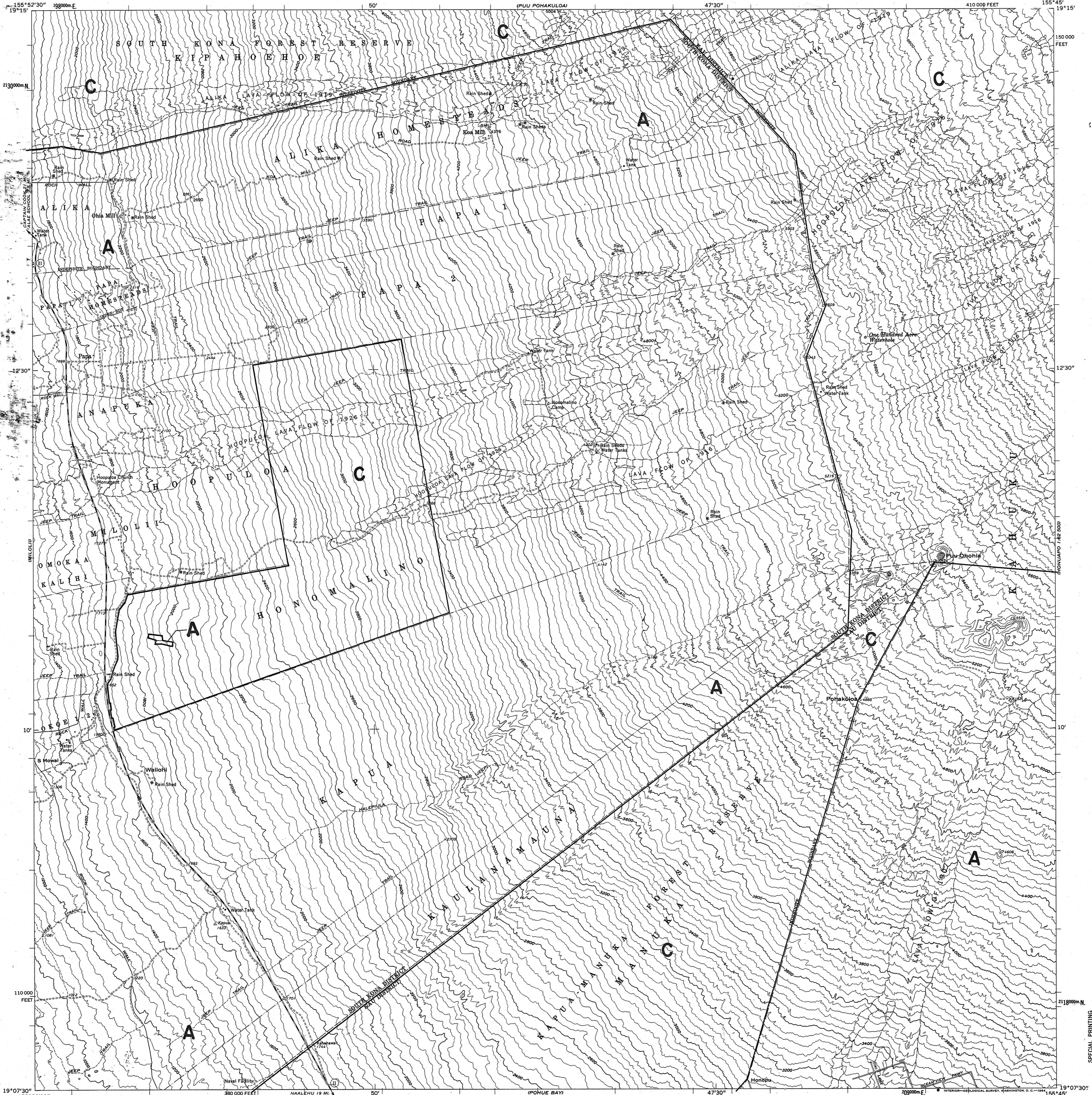


UNITED STATES
DEPARTMENT OF THE INTERIOR
GEOLOGICAL SURVEY

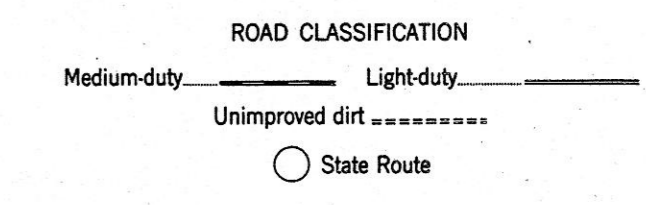
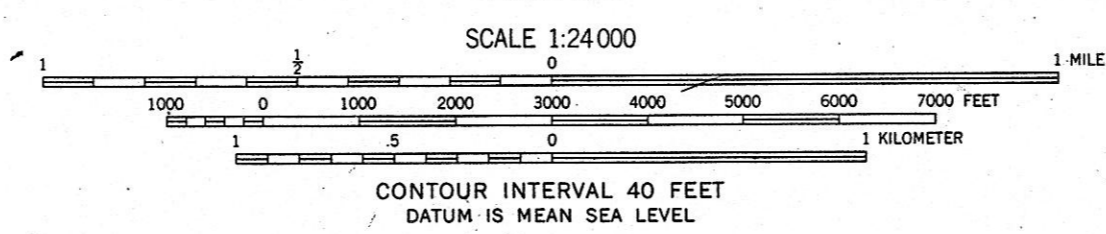
LAND USE DISTRICT BOUNDARIES		
DISTRICT MAP	STATE OF HAWAII	DISTRICTS
H-21	LAND USE COMMISSION	U = URBAN
	DEPT. OF PLANNING & ECONOMIC DEVELOPMENT	R = RURAL
	EFFECTIVE DATE: DEC 20 1974	A = AGRICULTURAL
		C = CONSERVATION

PAPA QUADRANGLE
HAWAII-ISLAND AND COUNTY OF HAWAII
7.5 MINUTE SERIES (TOPOGRAPHIC)
NE/4 HOOPULOA 15' QUADRANGLE



BOUNDARY AMENDMENTS	
DOCKET NO.	DATE
A83-554 FARMS OF KAPUA	C to A 2/28/85
A83-554 FARMS OF KAPUA	A to C 6/26/89
BK95-635 OFF. STATE PLN 6	A to C 06/28/94, Rec. 07/16/94

Remanded to LUC
for further findings
(After Remand)



FOR SALE BY U. S. GEOLOGICAL SURVEY, DENVER 25, COLORADO OR WASHINGTON 25, D. C.

PAPA, HAWAII
NE/4 HOOPULOA 15' QUADRANGLE
N1907.5-W15545/7.5

1962
H-21