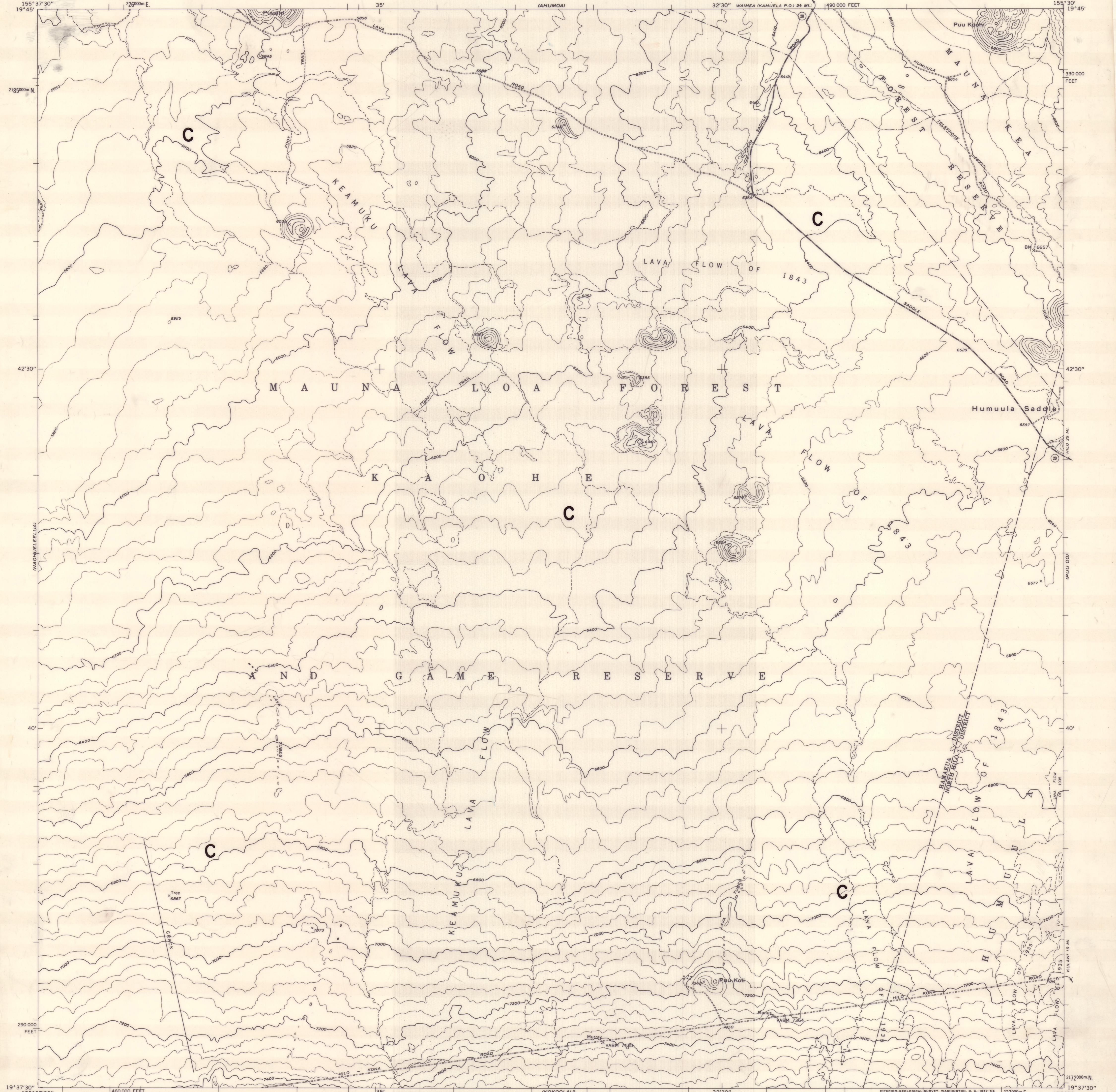


UNITED STATES  
DEPARTMENT OF THE INTERIOR  
GEOLOGICAL SURVEY

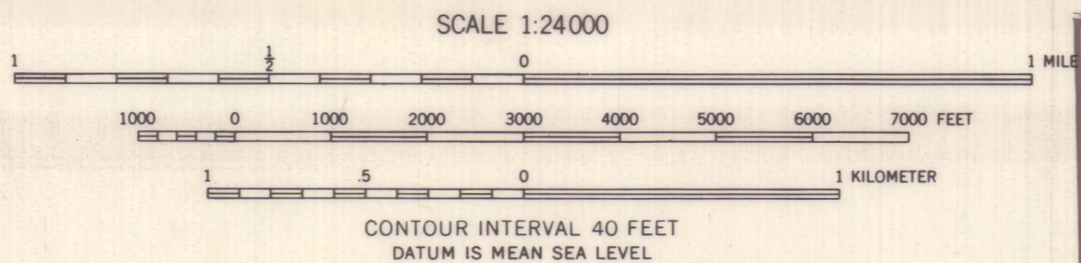
LAND USE DISTRICT BOUNDARIES		
DISTRICT MAP	STATE OF HAWAII LAND USE COMMISSION DEPT. OF PLANNING & ECONOMIC DEVELOPMENT EFFECTIVE DATE: DEC 20 1974	DISTRICTS U = URBAN R = RURAL A = AGRICULTURAL C = CONSERVATION
<b>H-37</b>		

PUU KOLI QUADRANGLE  
HAWAII—ISLAND AND COUNTY OF HAWAII  
7.5 MINUTE SERIES (TOPOGRAPHIC)  
NE/4 KAHOE 15' QUADRANGLE



Mapped, edited, and published by the Geological Survey  
Control by USGS  
Topography from aerial photographs by multiplex methods  
Aerial photographs taken 1954. Field check 1956  
Polyconic projection. Old Hawaiian datum  
10,000-foot grid based on Hawaiian coordinate system, zone 1  
1000-meter Universal Transverse Mercator grid ticks,  
zone 5, shown in blue

TRUE NORTH  
MAGNETIC NORTH  
APPROXIMATE MEAN  
DECLINATION, 1956



BOUNDARY AMENDMENTS	
DOCKET NO.	DATE

ROAD CLASSIFICATION  
Medium-duty ——— Light-duty ———  
Unimproved dirt ———

PUU KOLI, HAWAII  
NE/4 KAHOE 15' QUADRANGLE  
N1937.5—W15530/7.5

1956

**H-37**