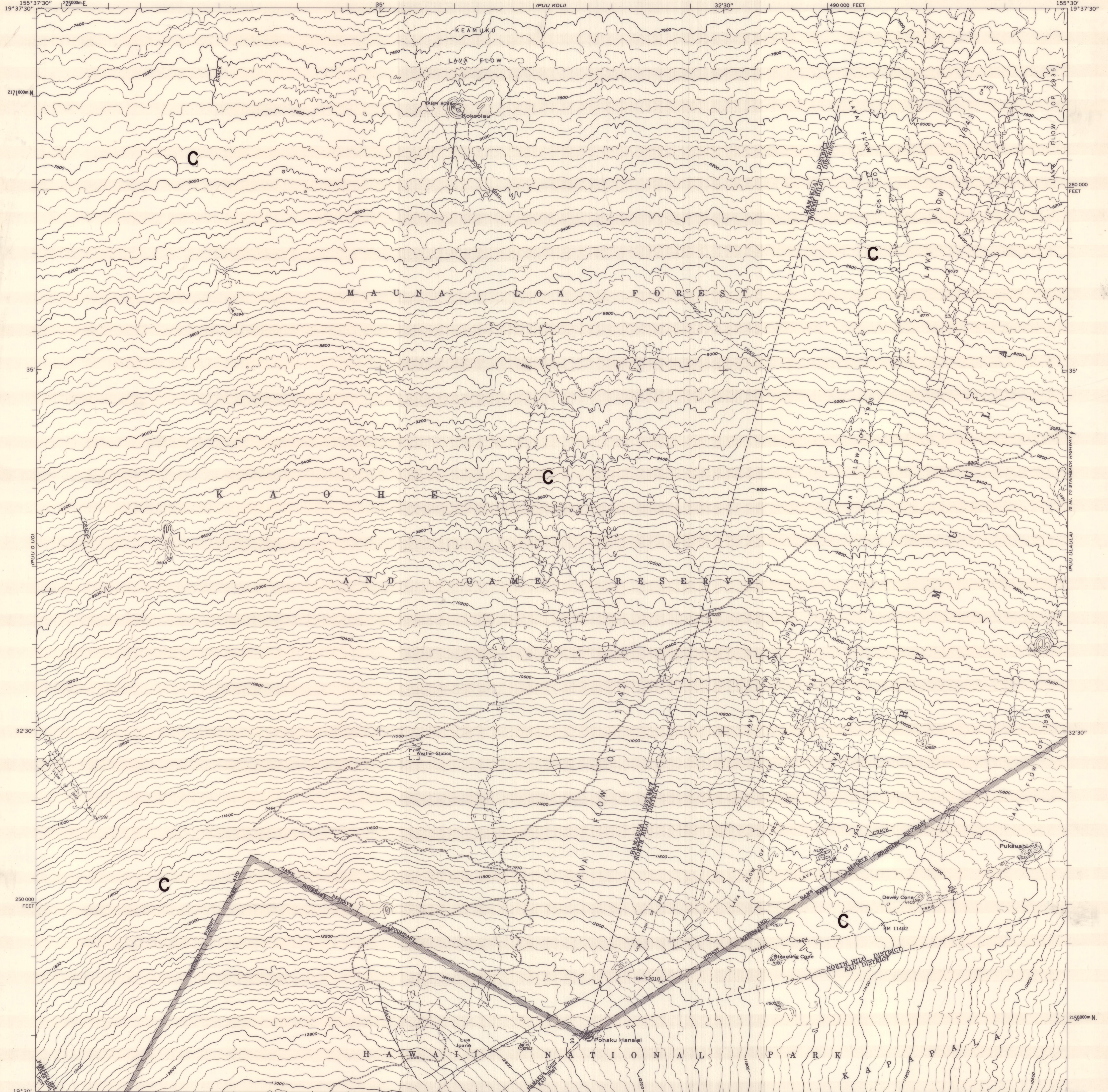


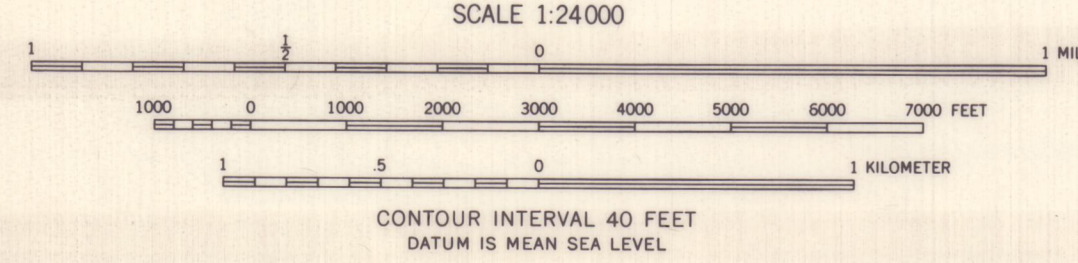
UNITED STATES  
DEPARTMENT OF THE INTERIOR  
GEOLOGICAL SURVEY

LAND USE DISTRICT BOUNDARIES		
DISTRICT MAP	STATE OF HAWAII	DISTRICTS
<b>H-38</b>	LAND USE COMMISSION	U = URBAN
	DEPT. OF PLANNING & ECONOMIC DEVELOPMENT	R = RURAL
	EFFECTIVE DATE: DEC 20 1974	A = AGRICULTURAL
		C = CONSERVATION

KOKOOLAU QUADRANGLE  
HAWAII—ISLAND AND COUNTY OF HAWAII  
7.5 MINUTE SERIES (TOPOGRAPHIC)  
SE/4 KAHOE 15' QUADRANGLE



Mapped, edited, and published by the Geological Survey  
Control by USGS and USC&GS  
Topography from aerial photographs by multiplex methods  
Aerial photographs taken 1954. Field check 1956  
Polyconic projection. Old Hawaiian datum  
10,000-foot grid based on Hawaiian coordinate system, zone 1  
1,000-meter Universal Transverse Mercator grid ticks,  
zone 5, shown in blue



BOUNDARY AMENDMENTS	
SOCKET NO.	DATE

ROAD CLASSIFICATION  
Unimproved dirt - - - - -

KOKOOLAU, HAWAII  
SE/4 KAHOE 15' QUADRANGLE  
N1930—W15530/7.5

1956

**H-38**