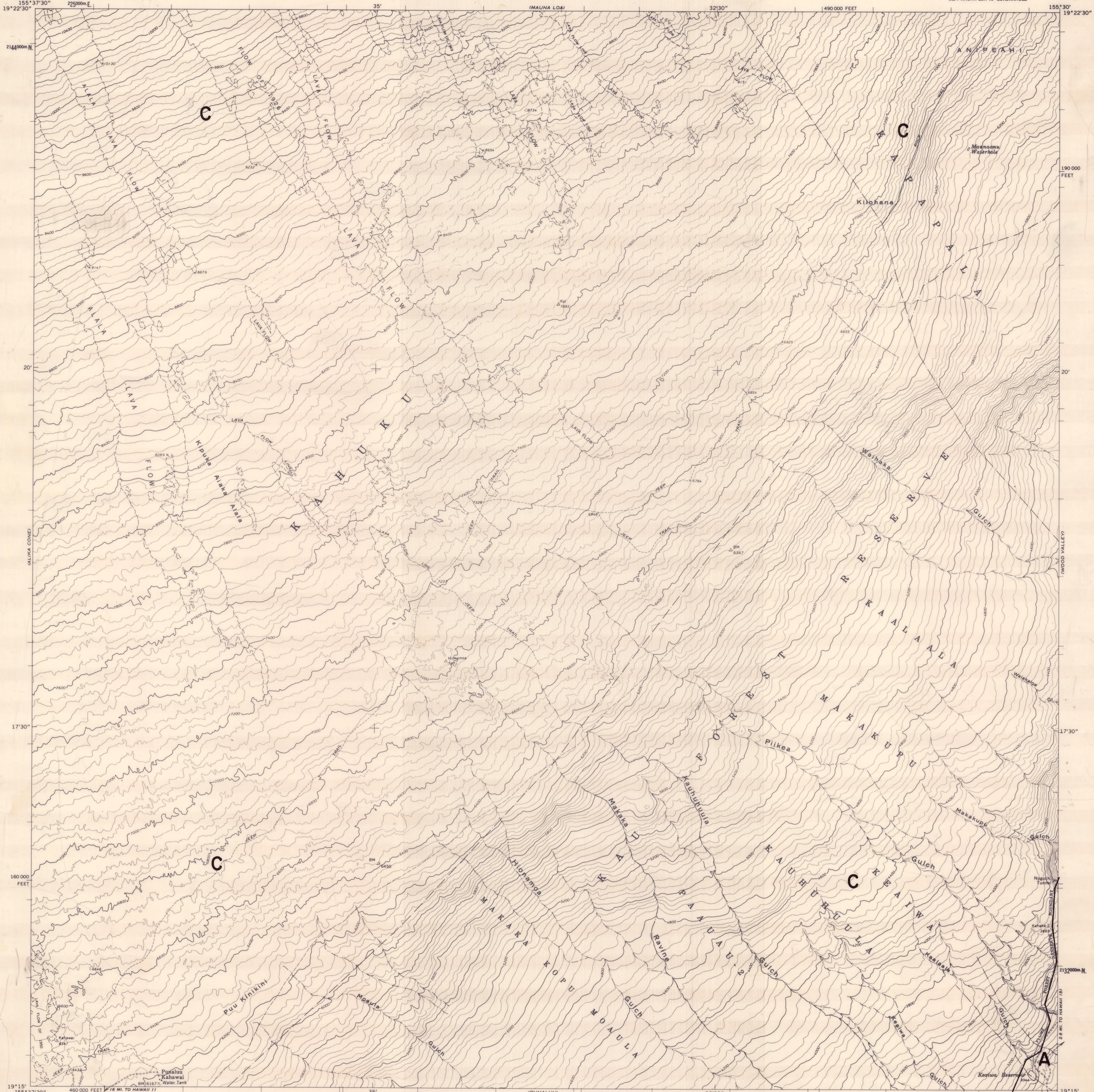


UNITED STATES
DEPARTMENT OF THE INTERIOR
GEOLOGICAL SURVEY

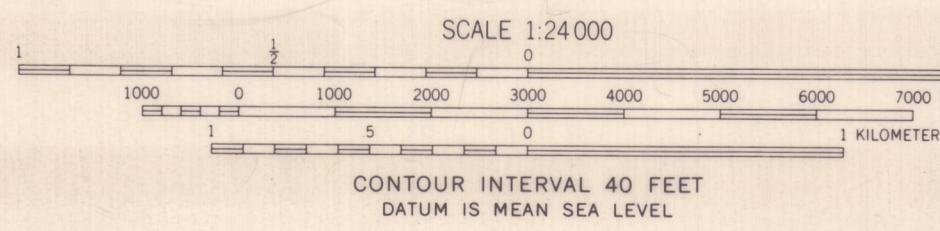
LAND USE DISTRICT BOUNDARIES		
DISTRICT MAP	STATE OF HAWAII LAND USE COMMISSION DEPT. OF PLANNING & ECONOMIC DEVELOPMENT EFFECTIVE DATE: DEC 20 1974	DISTRICTS U = URBAN R = RURAL A = AGRICULTURAL C = CONSERVATION
H-40		

KEAIIWA RESERVOIR QUADRANGLE
HAWAII-HAWAII CO.
ISLAND OF HAWAII-KAU DISTRICT
7.5 MINUTE SERIES (TOPOGRAPHIC)
SE/4 MAUNA LOA 15' QUADRANGLE



Mapped, edited, and published by the Geological Survey
Control by USGS and USC&GS
Topography by photogrammetric methods from aerial
photographs taken 1954 and 1965. Field checked 1967
Polyconic projection. Old Hawaiian datum
10,000-foot grid based on Hawaii coordinate system, zone 1
1000-meter Universal Transverse Mercator grid ticks,
zone 5, shown in blue
Fine red dashed lines indicate selected fence lines
This map lies within an unstable volcanic area

11°
TRUE NORTH
MAGNETIC NORTH
APPROXIMATE MEAN
DECLINATION, 1967



BOUNDARY AMENDMENTS	
DOCKET NO.	DATE

HAWAIIAN ISLANDS
QUADRANGLE LOCATION

ROAD CLASSIFICATION
Unimproved dirt -----

KEAIIWA RESERVOIR, HAWAII
SE/4 MAUNA LOA 15' QUADRANGLE
N1915-W15530/7.5

1967
H-40

FOR SALE BY U. S. GEOLOGICAL SURVEY, DENVER, COLORADO 80225, OR WASHINGTON, D. C. 20242
A FOLDER DESCRIBING TOPOGRAPHIC MAPS AND SYMBOLS IS AVAILABLE ON REQUEST