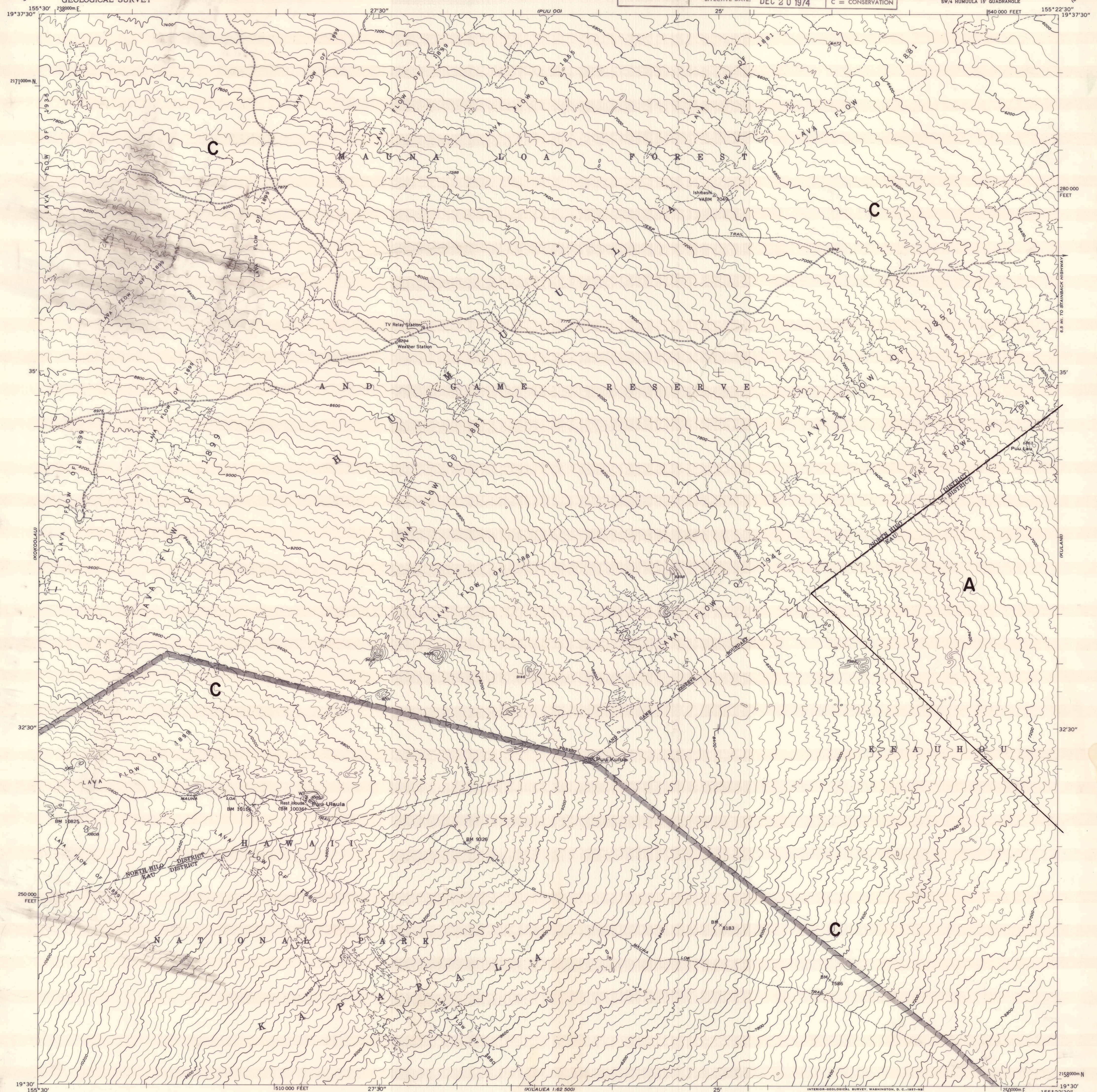


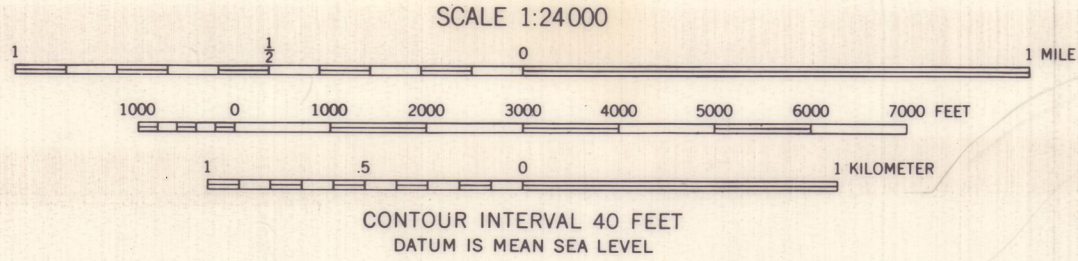
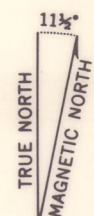
UNITED STATES
DEPARTMENT OF THE INTERIOR
GEOLOGICAL SURVEY

LAND USE DISTRICT BOUNDARIES		
DISTRICT MAP H-47	STATE OF HAWAII LAND USE COMMISSION DEPT. OF PLANNING & ECONOMIC DEVELOPMENT EFFECTIVE DATE: DEC 20 1974	DISTRICTS U = URBAN R = RURAL A = AGRICULTURAL C = CONSERVATION

PUU ULAULA QUADRANGLE
HAWAII—ISLAND AND COUNTY OF HAWAII
7.5 MINUTE SERIES (TOPOGRAPHIC)
SW/4 HUMUULA 15' QUADRANGLE



Mapped, edited, and published by the Geological Survey
Control by USGS and USC&GS
Topography from aerial photographs by multiplex methods
Aerial photographs taken 1954. Field check 1956
Polyconic projection. Old Hawaiian datum
10,000-foot grid based on Hawaiian coordinate system, zone 1
1000-meter Universal Transverse Mercator grid ticks,
zone 5, shown in blue



BOUNDARY AMENDMENTS	
DOCKET NO.	DATE

ROAD CLASSIFICATION
Unimproved dirt - - - - -

PUU ULAULA, HAWAII
SW/4 HUMUULA 15' QUADRANGLE
N1930—W15522.5/7.5

H-47