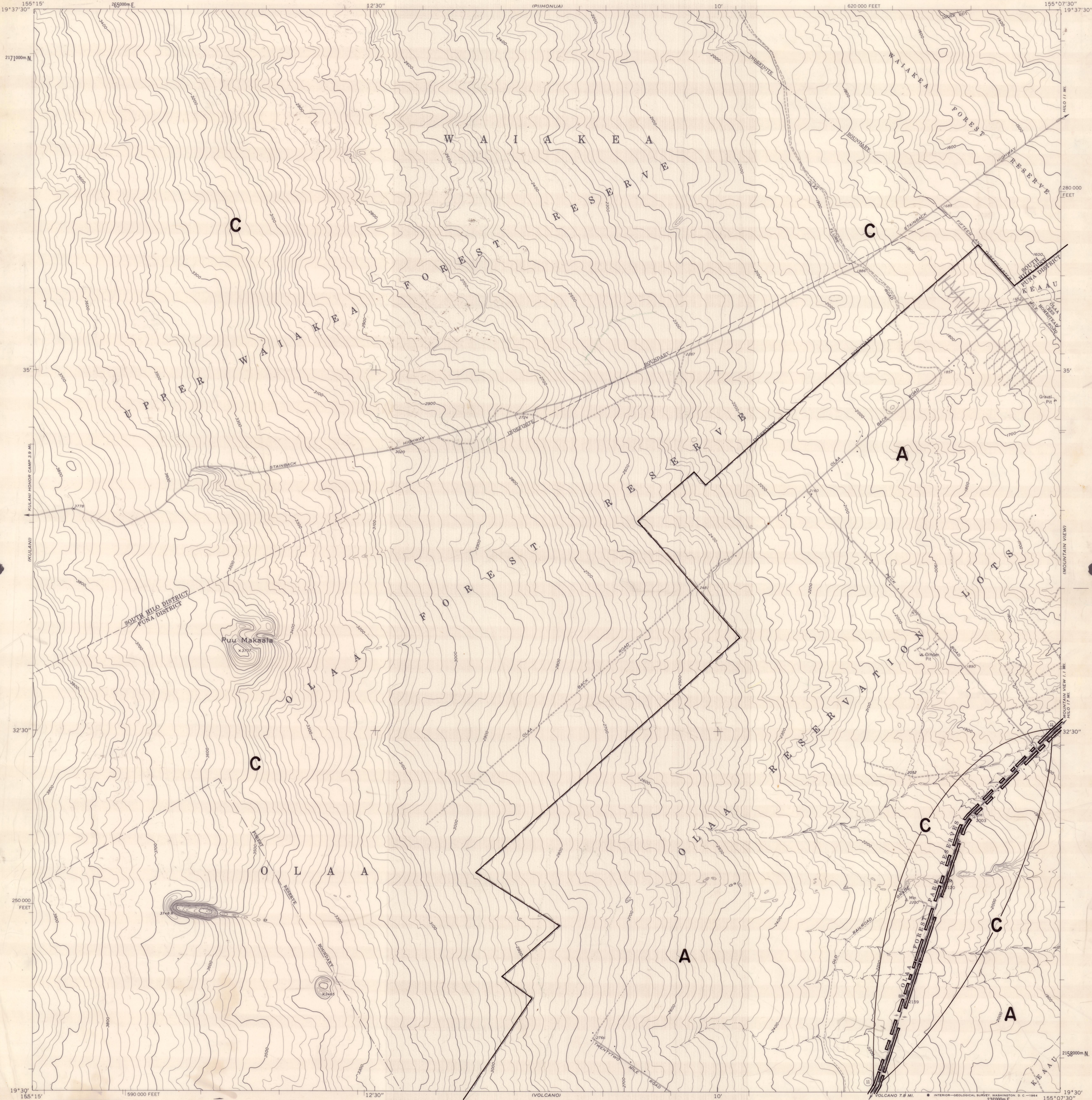


UNITED STATES
DEPARTMENT OF THE INTERIOR
GEOLOGICAL SURVEY

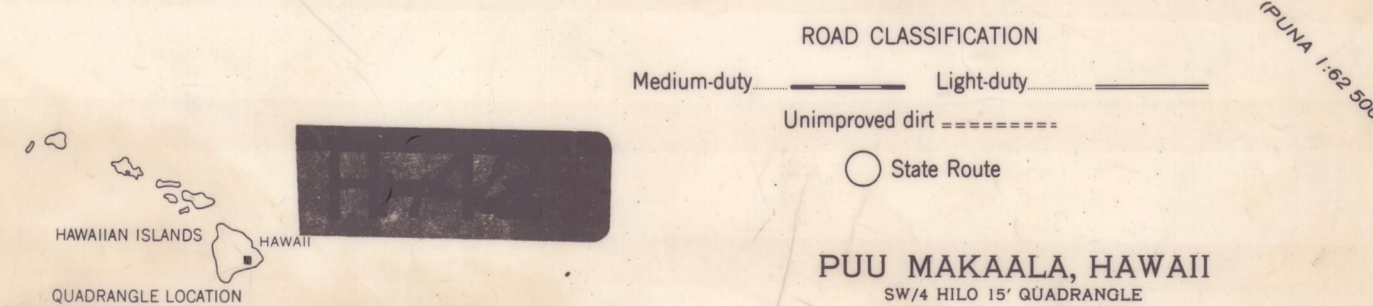
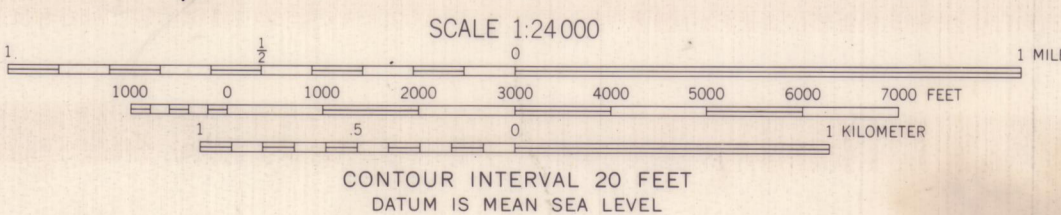
LAND USE DISTRICT BOUNDARIES		
DISTRICT MAP	STATE OF HAWAII LAND USE COMMISSION DEPT. OF PLANNING & ECONOMIC DEVELOPMENT EFFECTIVE DATE: DEC 20 1974	DISTRICTS U = URBAN R = RURAL A = AGRICULTURAL C = CONSERVATION
H-62		

PUU MAKAALA QUADRANGLE
HAWAII—ISLAND AND COUNTY OF HAWAII
7.5 MINUTE SERIES (TOPOGRAPHIC)
SW/4 HILO 15' QUADRANGLE



BOUNDARY AMENDMENTS	
DOCKET NO.	DATE

113°
TRUE NORTH
MAGNETIC NORTH
APPROXIMATE MEAN
DECLINATION, 1963



PUU MAKAALA, HAWAII
SW/4 HILO 15' QUADRANGLE
N1930—W15507.5/7.5

FOR SALE BY U. S. GEOLOGICAL SURVEY, DENVER 25, COLORADO OR WASHINGTON 25, D. C.
A PUBLISHED DESCRIBING TOPOGRAPHIC MAPS AND CHARTS IS AVAILABLE ON REQUEST.

1963
H-62