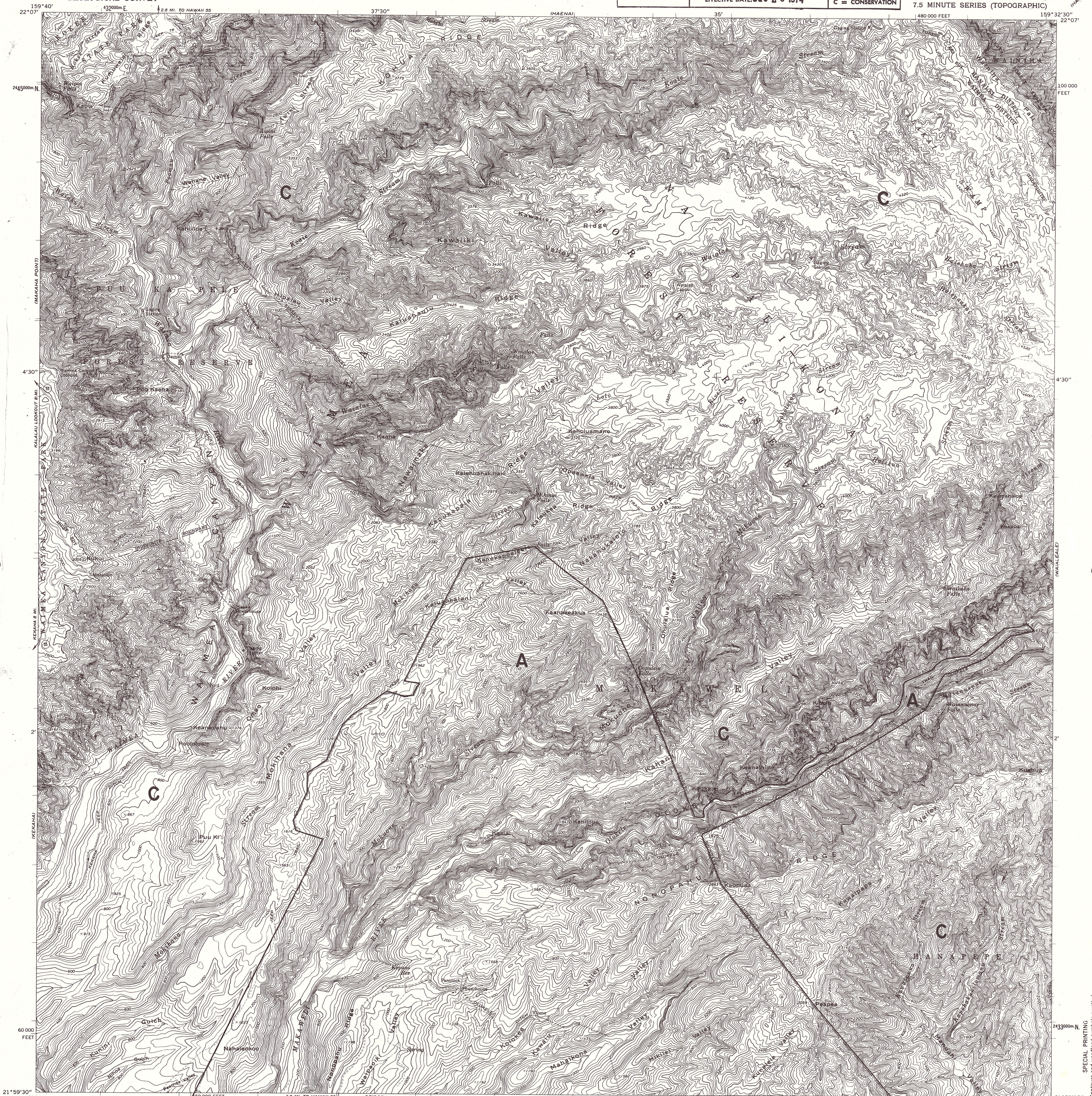


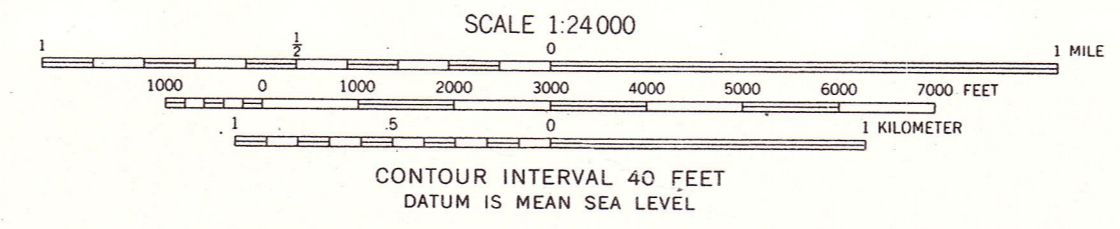
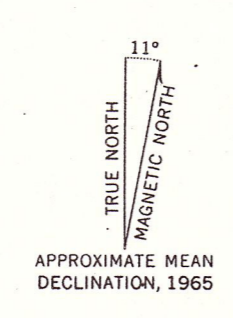
UNITED STATES  
DEPARTMENT OF THE INTERIOR  
GEOLOGICAL SURVEY

LAND USE DISTRICT BOUNDARIES		
DISTRICT MAP	STATE OF HAWAII	DISTRICTS
<b>K-4</b>	LAND USE COMMISSION	U = URBAN
	DEPT. OF PLANNING & ECONOMIC DEVELOPMENT	R = RURAL
	EFFECTIVE DATE, DEC 20 1974	A = AGRICULTURAL
		C = CONSERVATION

WAIMEA CANYON QUADRANGLE  
HAWAII—ISLAND AND COUNTY OF KAUAI  
7.5 MINUTE SERIES (TOPOGRAPHIC)



Mapped, edited, and published by the Geological Survey  
Control by USGS and USC&GS  
Topography by photogrammetric methods from aerial  
photographs taken 1959-60 and by American Factors Ltd., 1953  
Field checked 1965  
Polyconic projection. Old Hawaiian datum.  
10,000-foot grid based on Hawaii coordinate system, zone 4  
1000-meter Universal Transverse Mercator grid ticks,  
zone 4, shown in blue  
Boundaries of private lands within the Na Pali-Kona  
Forest Reserve are not shown because of insufficient data



FOR SALE BY U. S. GEOLOGICAL SURVEY, DENVER, COLORADO 80225, OR WASHINGTON, D. C. 20242  
A FOLDER DESCRIBING TOPOGRAPHIC MAPS AND SYMBOLS IS AVAILABLE ON REQUEST

BOUNDARY AMENDMENTS	
DOCKET NO.	DATE

ROAD CLASSIFICATION  
Light-duty ——— Unimproved dirt - - - - -  
○ State Route  
Map of the island of Kauai, scale 1:62,500 is available  
WAIMEA CANYON, HAWAII  
N2159.5—W15932.5/7.5

1965  
**K-4**

SPECIAL PRINTING  
Contours and woodland symbols omitted