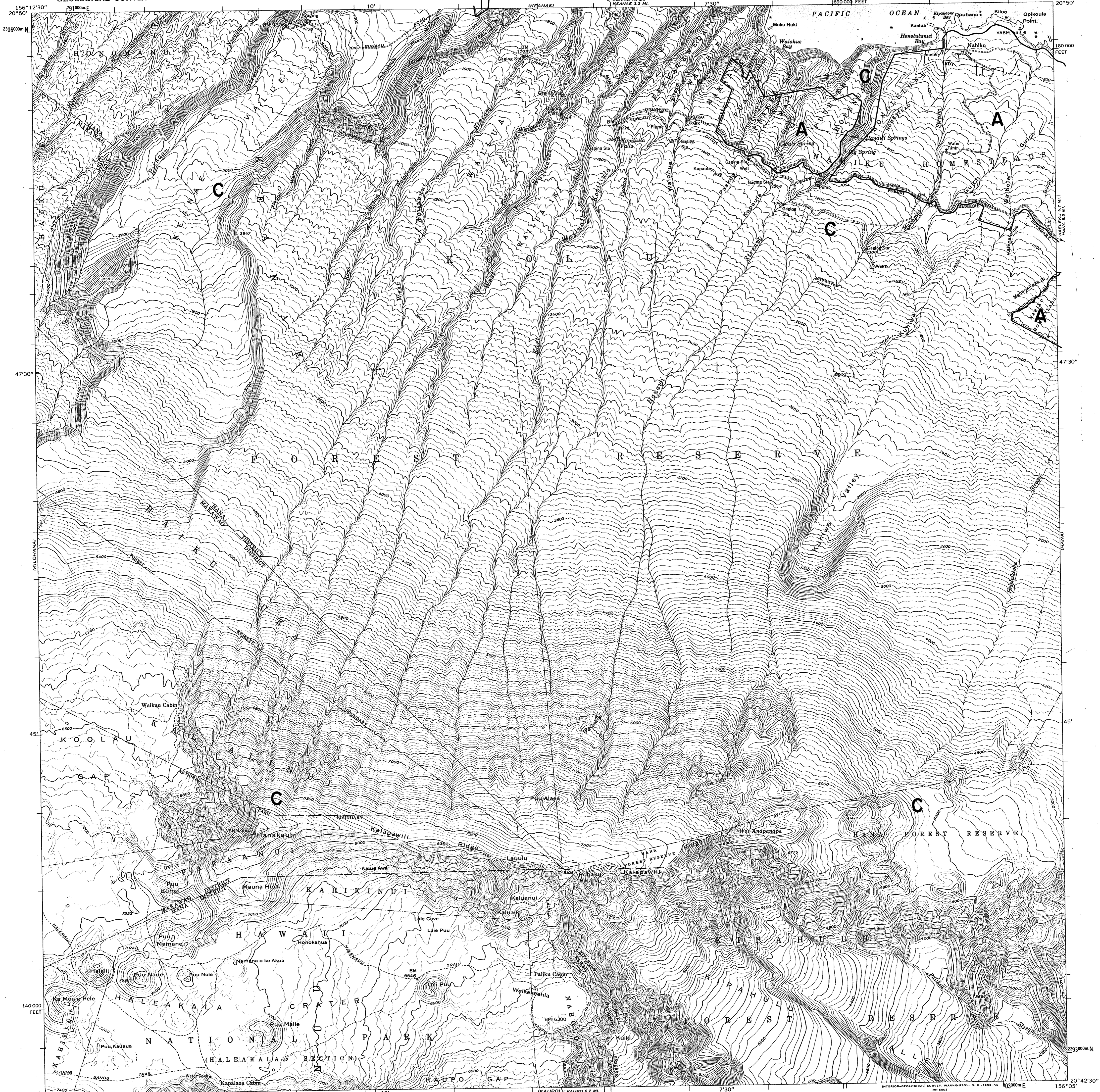


LAND USE DISTRICT BOUNDARIES		
DISTRICT MAP	STATE OF HAWAII	DISTRICTS
M-14	LAND USE COMMISSION	U = URBAN
	DEPT. OF PLANNING & ECONOMIC DEVELOPMENT	R = RURAL
	EFFECTIVE DATE: DEC 20 1974	A = AGRICULTURAL
		C = CONSERVATION

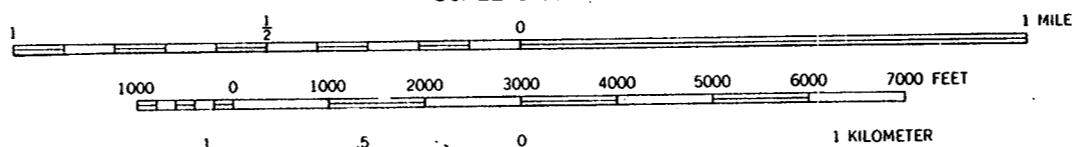
NAHIKU QUADRANGLE
HAWAII—ISLAND AND COUNTY OF MAUI
7.5 MINUTE SERIES (TOPOGRAPHIC)

UNITED STATES
DEPARTMENT OF THE INTERIOR
GEOLOGICAL SURVEY



Mapped, edited, and published by the Geological Survey
Control by USGS and USC&GS
Topography from aerial photographs by multiplex methods
Aerial photographs taken 1950. Field check 1957
Polyconic projection. Old Hawaiian datum
10,000-foot grid based on Hawaiian coordinate system, zone 2
1000-meter Universal Transverse Mercator grid ticks,
zone 4, shown in blue
Unchecked elevations are shown in brown

TRUE NORTH
MAGNETIC NORTH
APPROXIMATE MEAN
DECLINATION, 1957



CONTOUR INTERVAL 40 FEET
DATUM IS MEAN SEA LEVEL
SHORELINE SHOWN REPRESENTS THE APPROXIMATE LINE OF MEAN HIGH WATER
THE MEAN RANGE OF TIDE IS APPROXIMATELY 2 FEET

FOR SALE BY U. S. GEOLOGICAL SURVEY, DENVER 2, COLORADO OR WASHINGTON 25, D. C.

BOUNDARY AMENDMENTS	
DOCKET NO.	DATE

ROAD CLASSIFICATION
Light-duty ——— Unimproved dirt ———
Territorial Route ○

Map of the Island of Maui, scale 1:62,500, from an earlier survey, is available

NAHIKU, HAWAII
N2042.5—W15605/7.5

1957
M-14